

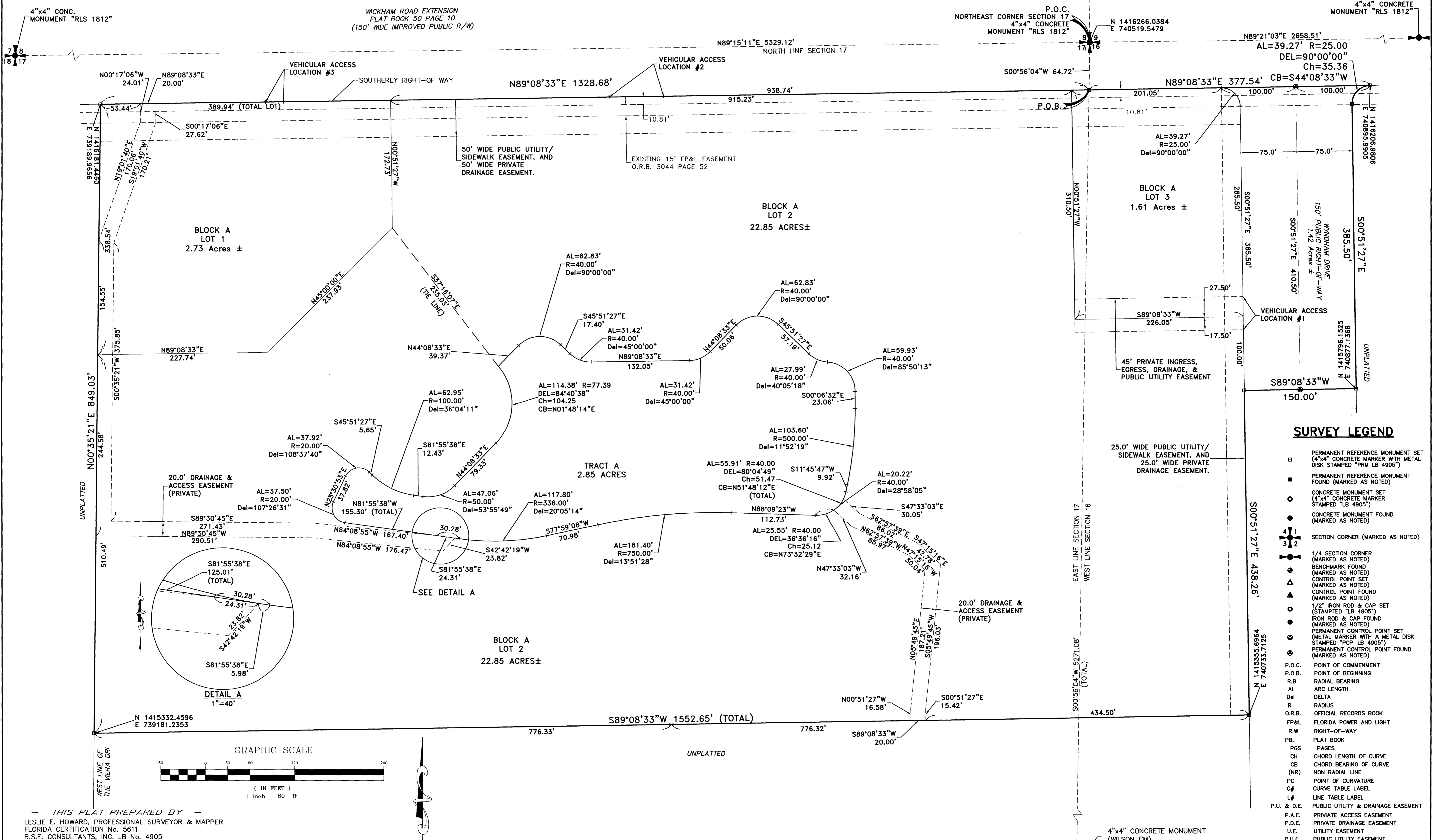
WATER'S EDGE

A PORTION OF SECTIONS 16 & 17, TOWNSHIP 26 SOUTH, RANGE 36 EAST
AND A PORTION OF PARCEL 5 OF THE VIERA CENTRAL P.U.D.
VIERA, BREVARD COUNTY, FLORIDA

DURAN GOLF CLUB
PLAT BOOK 51 PAGES 63-65

PLAT BOOK 55 PAGE 79
SHEET 2 OF 2
SECTIONS 16 & 17, TOWNSHIP 26 S, RANGE 36 E.

WYNDHAM
SUBDIVISION
PB 51
PGS 63-65



SURVEY LEGEND

- PERMANENT REFERENCE MONUMENT SET (4"x4" CONCRETE MARKER WITH METAL DISK STAMPED "PRM LB 4905")
- PERMANENT REFERENCE MONUMENT FOUND (MARKED AS NOTED)
- CONCRETE MONUMENT SET (4"x4" CONCRETE MARKER STAMPED "LB 4905")
- CONCRETE MONUMENT FOUND (MARKED AS NOTED)
- ⊕ SECTION CORNER (MARKED AS NOTED)
- ⊕ 1/4 SECTION CORNER (MARKED AS NOTED)
- ⊕ BENCHMARK FOUND (MARKED AS NOTED)
- ⊕ CONTROL POINT SET (MARKED AS NOTED)
- ⊕ CONTROL POINT FOUND (MARKED AS NOTED)
- ⊕ 1/2" IRON ROD & CAP SET (STAMPED "LB 4905")
- ⊕ IRON ROD & CAP FOUND (MARKED AS NOTED)
- ⊕ PERMANENT CONTROL POINT SET (METAL MARKER WITH A METAL DISK STAMPED "PCP-LB 4905")
- ⊕ PERMANENT CONTROL POINT FOUND (MARKED AS NOTED)
- ⊕ P.O.C. POINT OF COMMENCEMENT
- ⊕ P.O.B. POINT OF BEGINNING
- ⊕ R.B. RADIAL BEARING
- ⊕ AL ARC LENGTH
- ⊕ Δ DELTA
- ⊕ R RADIUS
- ⊕ O.R.B. OFFICIAL RECORDS BOOK
- ⊕ FP&L FLORIDA POWER AND LIGHT
- ⊕ R.W. RIGHT-OF-WAY
- ⊕ P.B. PLAT BOOK
- ⊕ PGS PAGES
- ⊕ CH CHORD LENGTH OF CURVE
- ⊕ CB CHORD BEARING OF CURVE
- ⊕ (NR) NON RADIAL LINE
- ⊕ PC POINT OF CURVATURE
- ⊕ C# CURVE TABLE LABEL
- ⊕ L# LINE TABLE LABEL
- ⊕ P.U. & D.E. PUBLIC UTILITY & DRAINAGE EASEMENT
- ⊕ P.A.E. PRIVATE ACCESS EASEMENT
- ⊕ P.D.E. PRIVATE DRAINAGE EASEMENT
- ⊕ U.E. UTILITY EASEMENT
- ⊕ P.U.E. PUBLIC UTILITY EASEMENT
- ⊕ P.R.M. PERMANENT REFERENCE MONUMENT
- ⊕ R RADIUS
- ⊕ CM CONCRETE MONUMENT
- ⊕ W.M.E. WALL MAINTENANCE EASEMENT

THIS PLAT PREPARED BY
LESLIE E. HOWARD, PROFESSIONAL SURVEYOR & MAPPER
FLORIDA CERTIFICATION No. 5611
B.S.E. CONSULTANTS, INC. LB No. 4905

B.S.E. CONSULTANTS, INC.
CONSULTING - ENGINEERING - LAND SURVEYING
312 SOUTH HARBOR CITY BOULEVARD, SUITE 4
MELBOURNE, FLORIDA PHONE: (321) 725-3674 FAX: (321) 723-1159
CERTIFICATE OF BUSINESS AUTHORIZATION: 4905
CERTIFICATE OF LAND SURVEYING BUSINESS AUTHORIZATION: LB0004905

DATE: 12/20/05
B.S.E. DWG. 10856405

NOTICE: THIS PLAT, AS RECORDED IN ITS GRAPHIC FORM, IS THE OFFICIAL DEPICTION OF THE SUBDIVIDED LANDS DESCRIBED HEREIN AND WILL IN NO CIRCUMSTANCES BE SUPPLANTED IN AUTHORITY BY ANY OTHER GRAPHIC OR DIGITAL FORM OF THE PLAT. THERE MAY BE ADDITIONAL RESTRICTIONS THAT ARE NOT RECORDED ON THIS PLAT THAT MAY BE FOUND IN THE PUBLIC RECORDS OF THIS COUNTY.