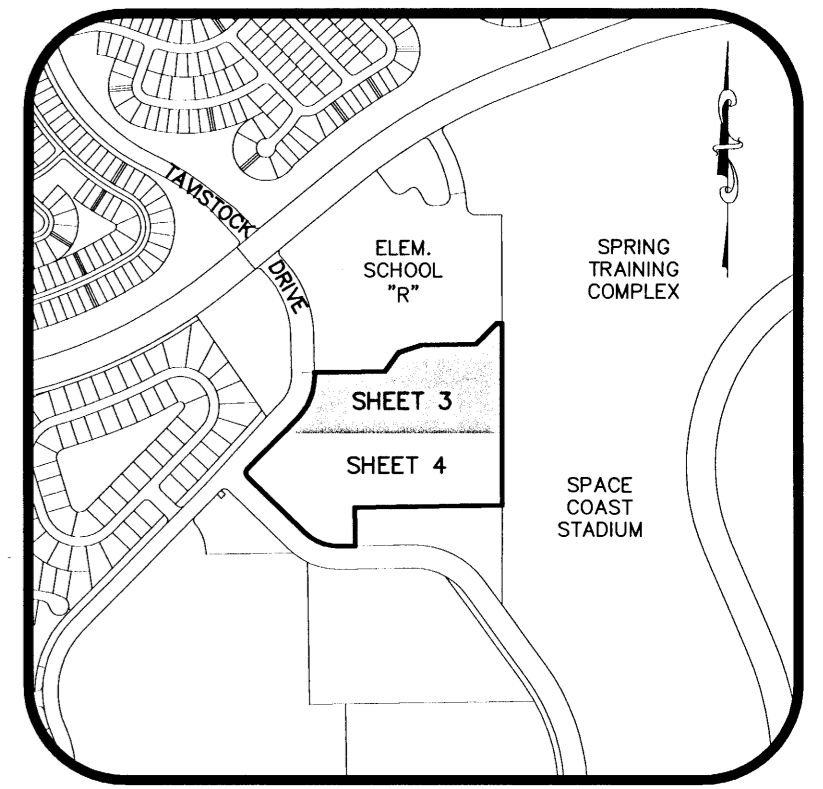
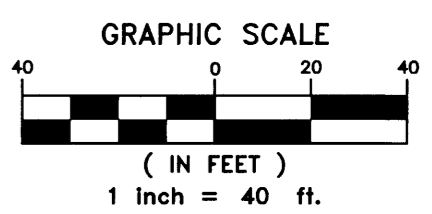


STONERIDGE SUBDIVISION

A REPLAT OF TRACTS A AND L, SUNSTONE SUBDIVISION - PHASE 1
 AS RECORDED IN PLAT BOOK 53, PAGE 57
 A PORTION OF PARCEL 4, VIERA CENTRAL P.U.D.
 SECTION 32, TOWNSHIP 25 SOUTH, RANGE 36 EAST
 BREVARD COUNTY, FLORIDA



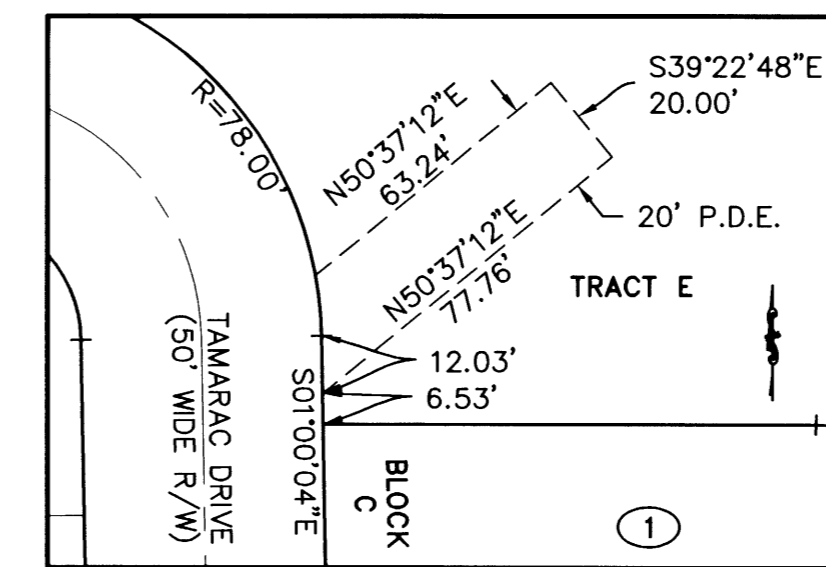
KEY MAP
NTS



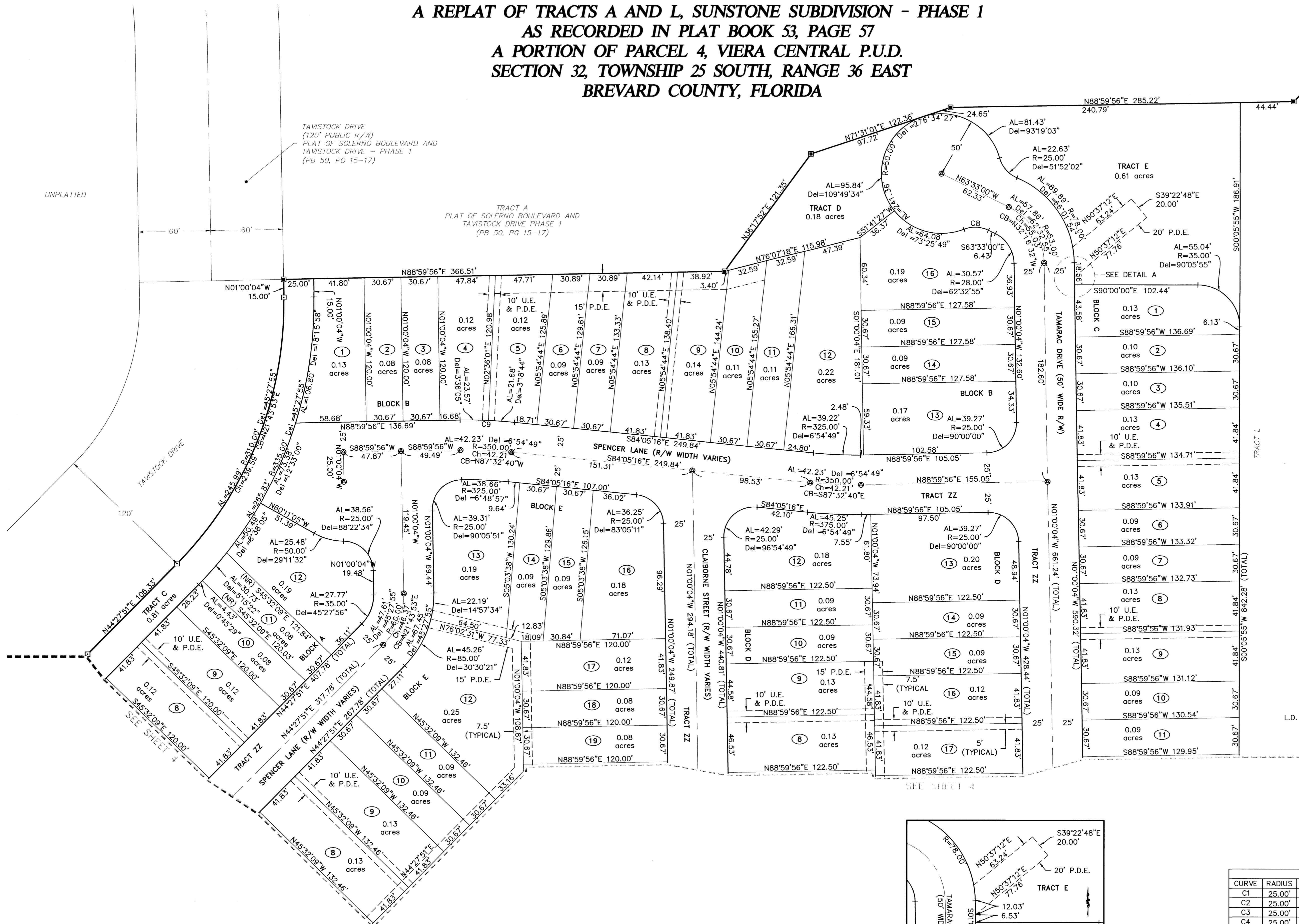
LEGEND

- = SECTION CORNER
11/12 (MARKED AS NOTED)
- = PERMANENT CONTROL POINT SET
(METAL MARKER WITH A METAL DISK STAMPED "PCP-LB 4905")
- = PERMANENT REFERENCE MONUMENT FOUND
(4"x4" CONCRETE MARKER WITH METAL DISK STAMPED "PRM LB 4905")
- = PERMANENT REFERENCE MONUMENT SET
(4"x4" CONCRETE MARKER WITH METAL DISK STAMPED "PRM LB 4905")
- AL = ARC LENGTH
- Del = DELTA
- CB = CHORD BEARING
- Ch = CHORD DISTANCE
- O.R.B. = OFFICIAL RECORDS BOOK
- PG = PAGE/PAGES
- PB = PLAT BOOK
- PC = POINT OF CURVATURE
- PT = POINT OF TANGENCY
- R = RADIUS
- R/W = RIGHT-OF-WAY
- U.E. = UTILITY EASEMENT (PUBLIC)
- P.D.E. = DRAINAGE EASEMENT (PRIVATE)
- L.D. & U.E. = LANDSCAPE, DRAINAGE AND UTILITY EASEMENT
- S.W.E. = SIDEWALK EASEMENT
- PUB = PUBLIC
- PR = PRIVATE

CURVE TABLE					
CURVE	RADIUS	LENGTH	DELTA	CHORD BEARING	CHORD
C1	25.00'	44.41'	101°47'22"	N50°00'05"E	38.80'
C2	25.00'	39.27'	90°00'00"	S45°53'36"E	35.36'
C3	25.00'	23.33'	53°28'11"	N27°37'42"W	22.49'
C4	25.00'	19.79'	45°21'27"	S21°47'07"W	19.28'
C5	25.00'	39.79'	91°11'01"	N89°56'39"W	35.72'
C6	25.00'	20.31'	46°32'28"	S67°37'22"E	19.75'
C7	25.00'	39.32'	90°06'28"	N44°03'10"E	35.39'
C8	25.00'	21.03'	48°11'23"	N87°38'41"W	20.41'
C9	375.00'	45.25'	6°54'49"	N87°32'40"W	45.22'



DETAIL A
SCALE: 1"=50'



THIS PLAT PREPARED BY
 LESLIE E. HOWARD, PROFESSIONAL SURVEYOR AND MAPPER
 FLORIDA CERTIFICATION No. 5611
 B.S.E. CONSULTANTS, INC. LB No. 4905

B.S.E. CONSULTANTS, INC.
 CONSULTING - ENGINEERING - LAND SURVEYING
 312 SOUTH HARBOR CITY BOULEVARD, SUITE 4
 MELBOURNE, FLORIDA PHONE: (321) 725-3674 FAX: (321) 723-1159
 CERTIFICATE OF BUSINESS AUTHORIZATION: 4905
 CERTIFICATE OF LAND SURVEYING BUSINESS AUTHORIZATION: LB0004905

DATE: APRIL 2006
 BSE DWG 10843 303

2005 B.S.E. CONSULTANTS, INC. H:\Projects\Folder\10843\Drawings\10843_303-304.dwg 1/17/2006 5:01:07 PM EST