

STONERIDGE SUBDIVISION

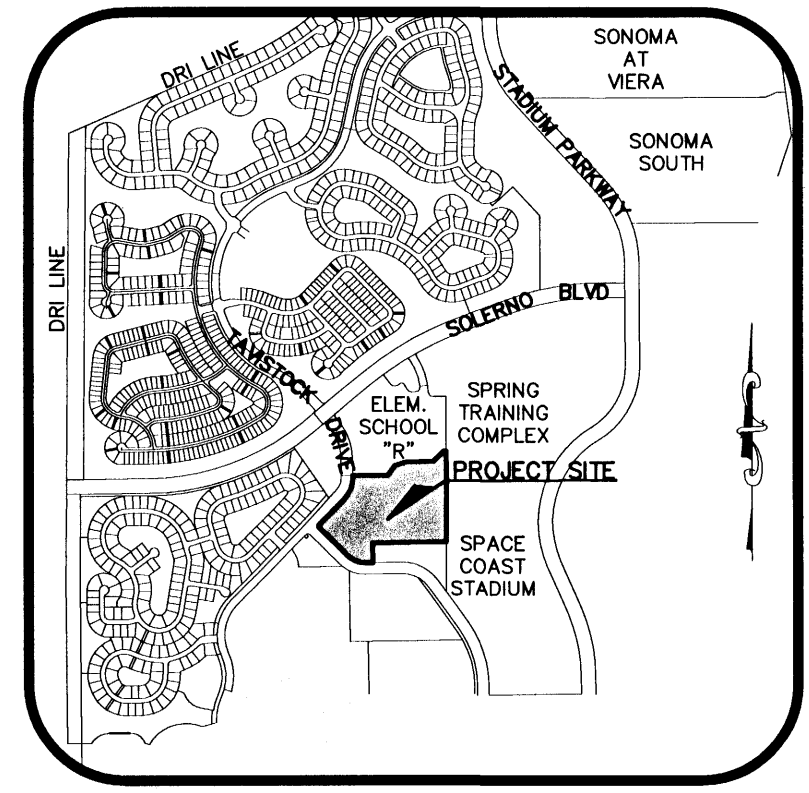
A REPLAT OF TRACTS A AND L, SUNSTONE SUBDIVISION - PHASE 1

AS RECORDED IN PLAT BOOK 53, PAGE 57

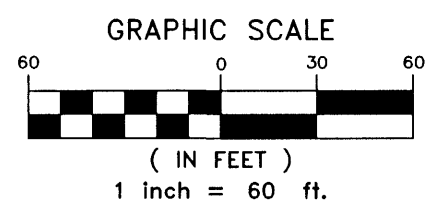
A PORTION OF PARCEL 4, VIERA CENTRAL P.U.D.

SECTION 32, TOWNSHIP 25 SOUTH, RANGE 36 EAST

BREVARD COUNTY, FLORIDA

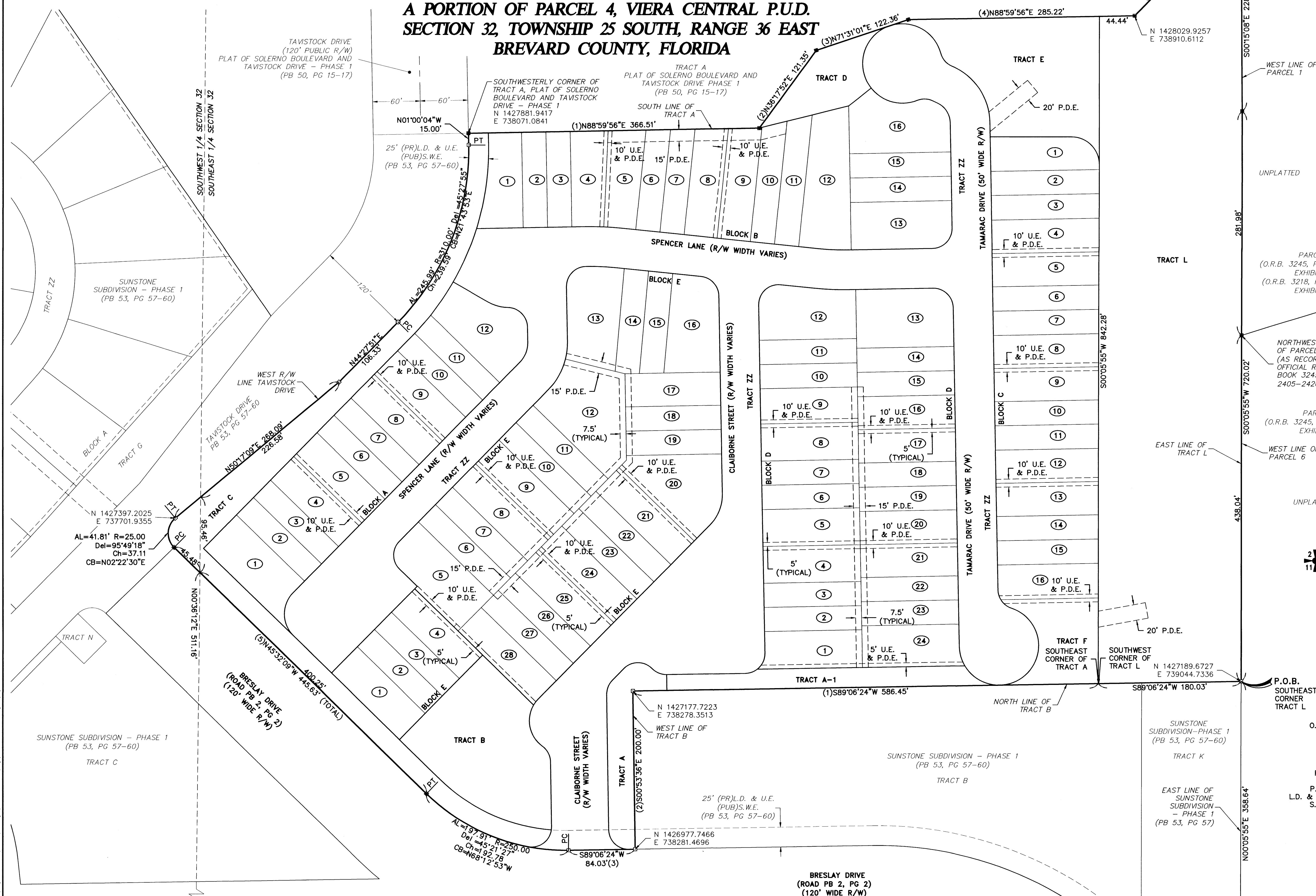


LOCATION MAP
NTS



LEGEND

- = SECTION CORNER (MARKED AS NOTED)
- = PERMANENT CONTROL POINT SET (METAL MARKER WITH A METAL DISK STAMPED "PCP-LB 4905")
- = PERMANENT REFERENCE MONUMENT FOUND (4"X4" CONCRETE MARKER WITH METAL DISK STAMPED "PRM LB 4905")
- = PERMANENT REFERENCE MONUMENT SET (4"X4" CONCRETE MARKER WITH METAL DISK STAMPED "PRM LB 4905")
- AL = ARC LENGTH
- Del = DELTA
- CB = CHORD BEARING
- Ch = CHORD DISTANCE
- O.R.B. = OFFICIAL RECORDS BOOK
- PB = PLAT BOOK
- PC = POINT OF CURVATURE
- PT = POINT OF TANGENCY
- R = RADIUS
- R/W = RIGHT-OF-WAY
- U.E. = UTILITY EASEMENT (PUBLIC)
- P.D.E. = DRAINAGE EASEMENT (PRIVATE)
- L.D. & U.E. = LANDSCAPE, DRAINAGE AND UTILITY EASEMENT
- S.W.E. = SIDEWALK EASEMENT
- PUB = PUBLIC
- PR = PRIVATE



THIS PLAT PREPARED BY
B.S.E. CONSULTANTS, INC.
CONSULTING - ENGINEERING - LAND SURVEYING
312 SOUTH HARBOR CITY BOULEVARD, SUITE 4
MELBOURNE, FLORIDA PHONE: (321) 725-3674 FAX: (321) 723-1158
CERTIFICATE OF BUSINESS AUTHORIZATION: 4902
CERTIFICATE OF LAND SURVEYING BUSINESS AUTHORIZATION: LB0004905

SOUTHWEST CORNER
SOUTHEAST 1/4
SECTION 32
DATE: APRIL 2006
BSE DWG 10843 302

SOUTHWEST CORNER
SOUTHEAST 1/4
SECTION 32
N 1426817.1373
E 737727.4761
1316.71'

SOUTH LINE OF SECTION 32 TOWNSHIP 25 SOUTH
NORTH LINE OF SECTION 5 TOWNSHIP 26 SOUTH

P.O.C.
S.E. CORNER OF
SECTION 32
FND 4"X4"CM
STAMPED "ALLEN"
N 1426845.0268
E 740370.3149
S89°23'43"W 5285.97'
(BASIS OF BEARING)

© 2005 B.S.E. CONSULTANTS, INC. \Projects\Folder\10843\Drawings\10843_302.dwg 2/2/2006 3:06:53 PM EST