

# WATERSTONE PLAT ONE P.U.D.

A PARCEL OF LAND BEING IN A PORTION OF SECTIONS 3 & 4, TOWNSHIP 30 SOUTH, RANGE 37 EAST, CITY OF PALM BAY, BREVARD COUNTY, FLORIDA.

SHEET 20 OF 21 SEPTEMBER, 2005

PLAT BOOK 55 PAGE 56

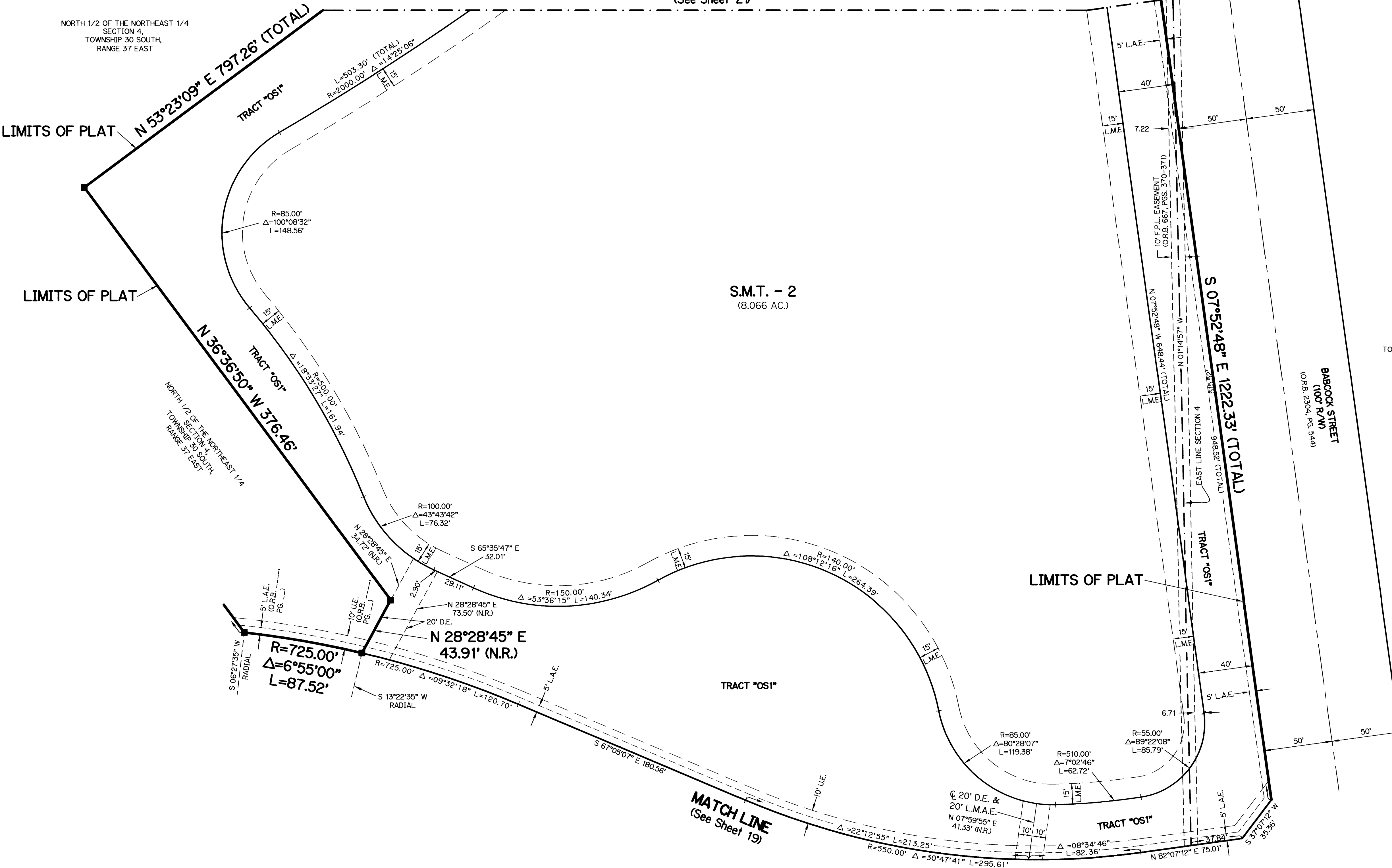
SHEET 20 OF 21

SECTIONS 3 & 4, TWP. 30 S, RANGE 37 E

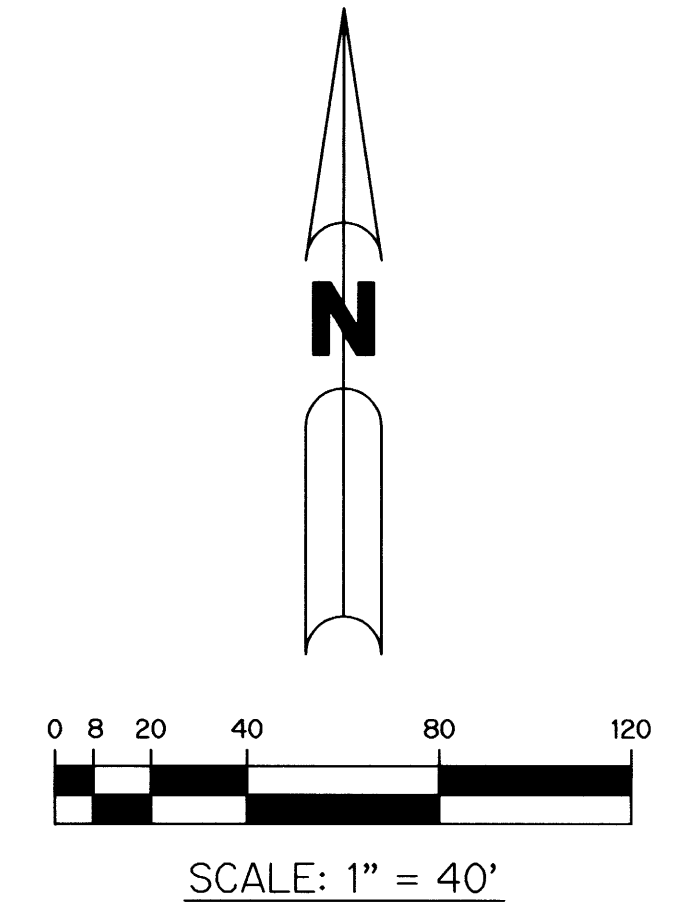
THIS INSTRUMENT PREPARED BY  
 STEVEN J. HYDE, P.S.M. LS-6436, STATE OF FLORIDA  
 ARCADIS LNW  
 LAWSON, NOBLE AND WEBB, INC.  
 ENGINEERS PLANNERS SURVEYORS  
 590 NW PEACOCK BLVD. SUITE 9  
 PORT ST. LUCIE, FLORIDA 34986  
 LB 6674

MATCH LINE  
 (See Sheet 21)

NORTH 1/2 OF THE NORTHEAST 1/4  
 SECTION 4,  
 TOWNSHIP 30 SOUTH,  
 RANGE 37 EAST



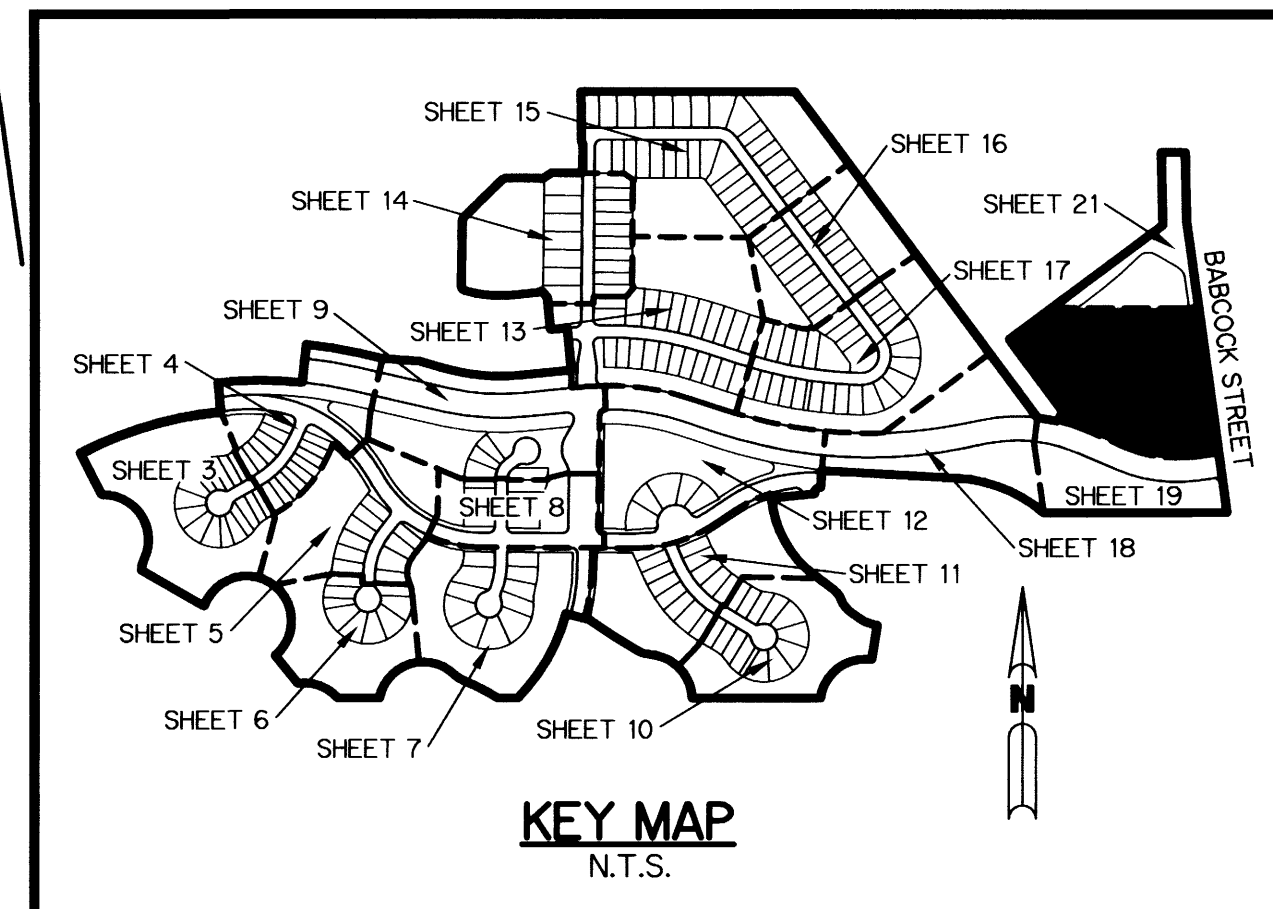
S.M.T. - 2  
 (8.066 AC.)



NORTHWEST 1/4  
 SECTION 3,  
 TOWNSHIP 30 SOUTH,  
 RANGE 37 EAST

**LEGEND:**

- - PERMANENT REFERENCE MONUMENT, LB #6674
- - PERMANENT CONTROL POINT, LB #6674
- △ - DELTA ANGLE
- ∠ - CENTERLINE
- AC - ACRES(S)
- BE - BUFFER EASEMENT
- CB - CHORD BEARING
- CH - CHORD LENGTH
- D.B. - DEED BOOK
- D.E. - DRAINAGE EASEMENT
- F.P.L. - FLORIDA POWER & LIGHT
- L - ARC LENGTH
- L.A.E. - LIMITED ACCESS EASEMENT
- L.M.A.E. - LAKE MAINTENANCE ACCESS EASEMENT
- L.M.E. - LAKE MAINTENANCE EASEMENT
- L.M.A.I.E. - LAKE MAINTENANCE ACCESS IRRIGATION EASEMENT
- N.R. - NOT RADIAL
- N.T.S. - NOT TO SCALE
- O.R.B. - OFFICIAL RECORD BOOK
- O.S. - OPEN SPACE
- P.A.E. - PEDESTRIAN ACCESS EASEMENT
- P.B. - PLAT BOOK
- PGS. - PAGES
- P.O.B. - POINT OF BEGINNING
- P.O.C. - POINT OF COMMENCEMENT
- P.R.M. - PERMANENT REFERENCE MONUMENT
- P.S.M. - PROFESSIONAL SURVEYOR AND MAPPER
- R - RADIUS
- RAD - RADIAL
- R/W - RIGHT-OF-WAY
- S.M.T. - STORMWATER MANAGEMENT TRACT
- S.T. - SURVEY TIE
- U.E. - UTILITY EASEMENT



THE PORTION OF THE 100' WIDE R-O-W OF  
 BABCOCK STREET (O.R.B. 423, PAGE 262) ON  
 THIS PAGE HAS BEEN VACATED AS PER  
 O.R.B. 2304, PAGES 541-543.

REVISIONS	DATE	BY	CK