

WATERSTONE PLAT ONE P.U.D.

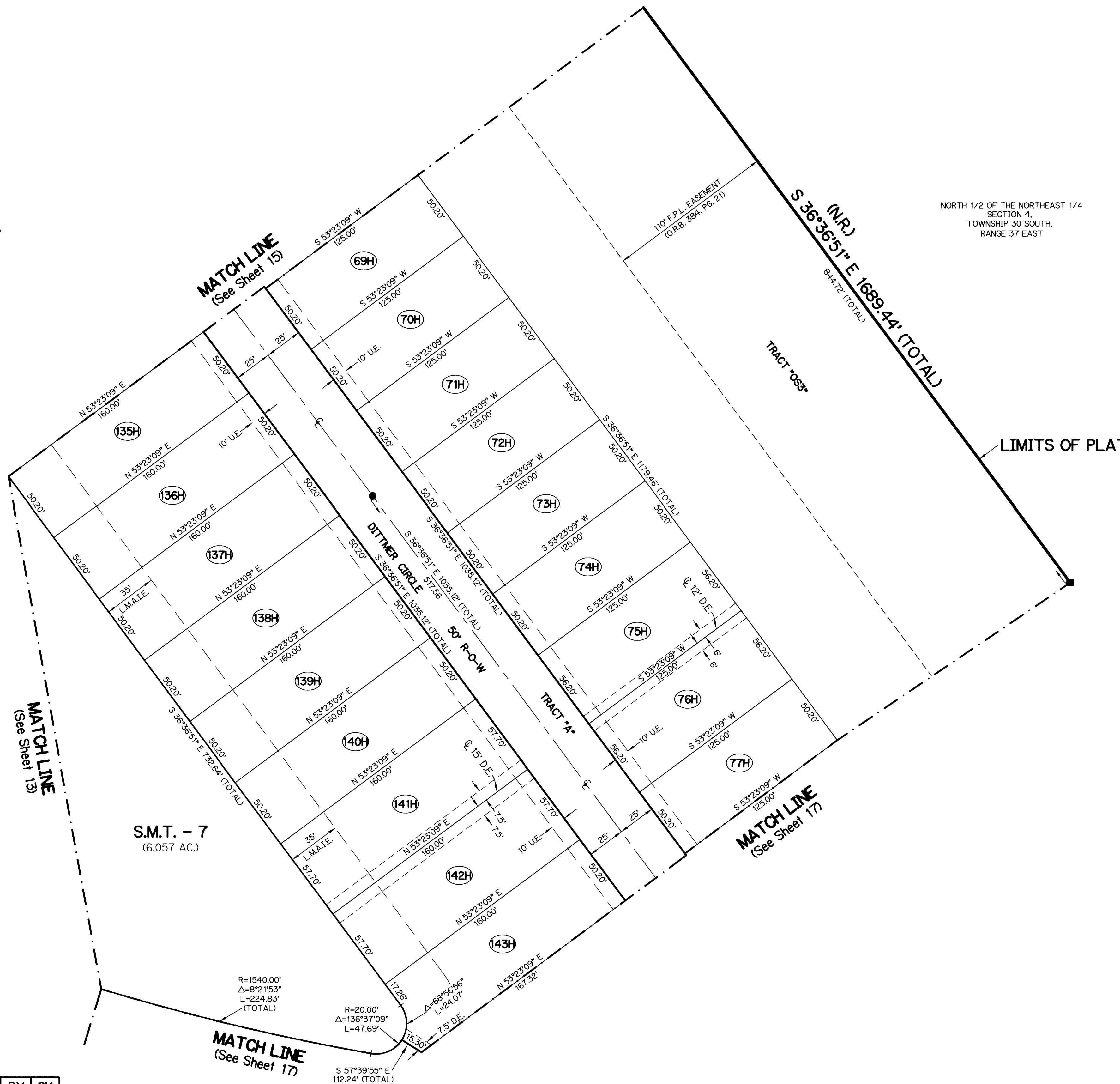
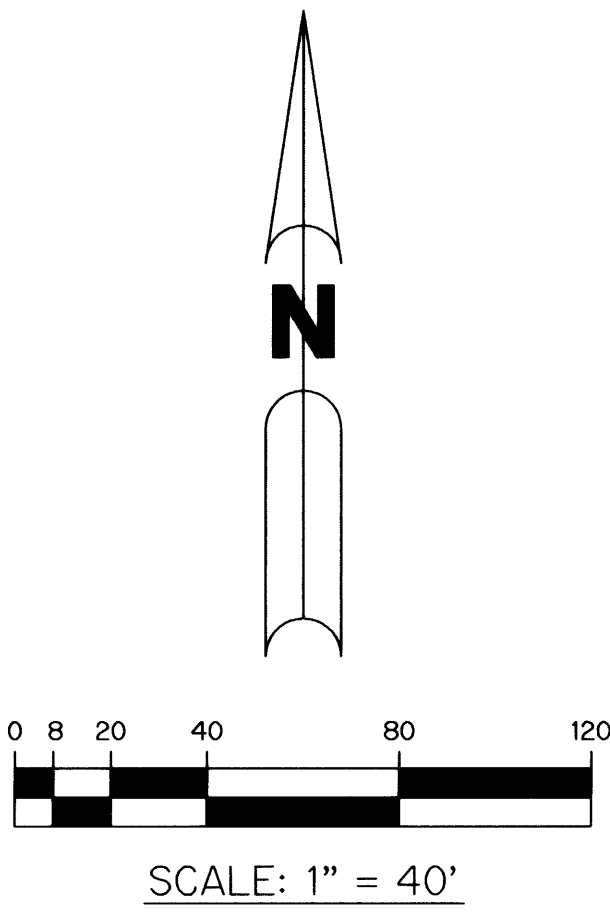
A PARCEL OF LAND BEING IN A PORTION OF SECTIONS 3 & 4, TOWNSHIP 30 SOUTH, RANGE 37 EAST, CITY OF PALM BAY, BREVARD COUNTY, FLORIDA.

SHEET 16 OF 21 SEPTEMBER, 2005

PLAT BOOK 55 PAGE 52

SHEET 16 OF 21

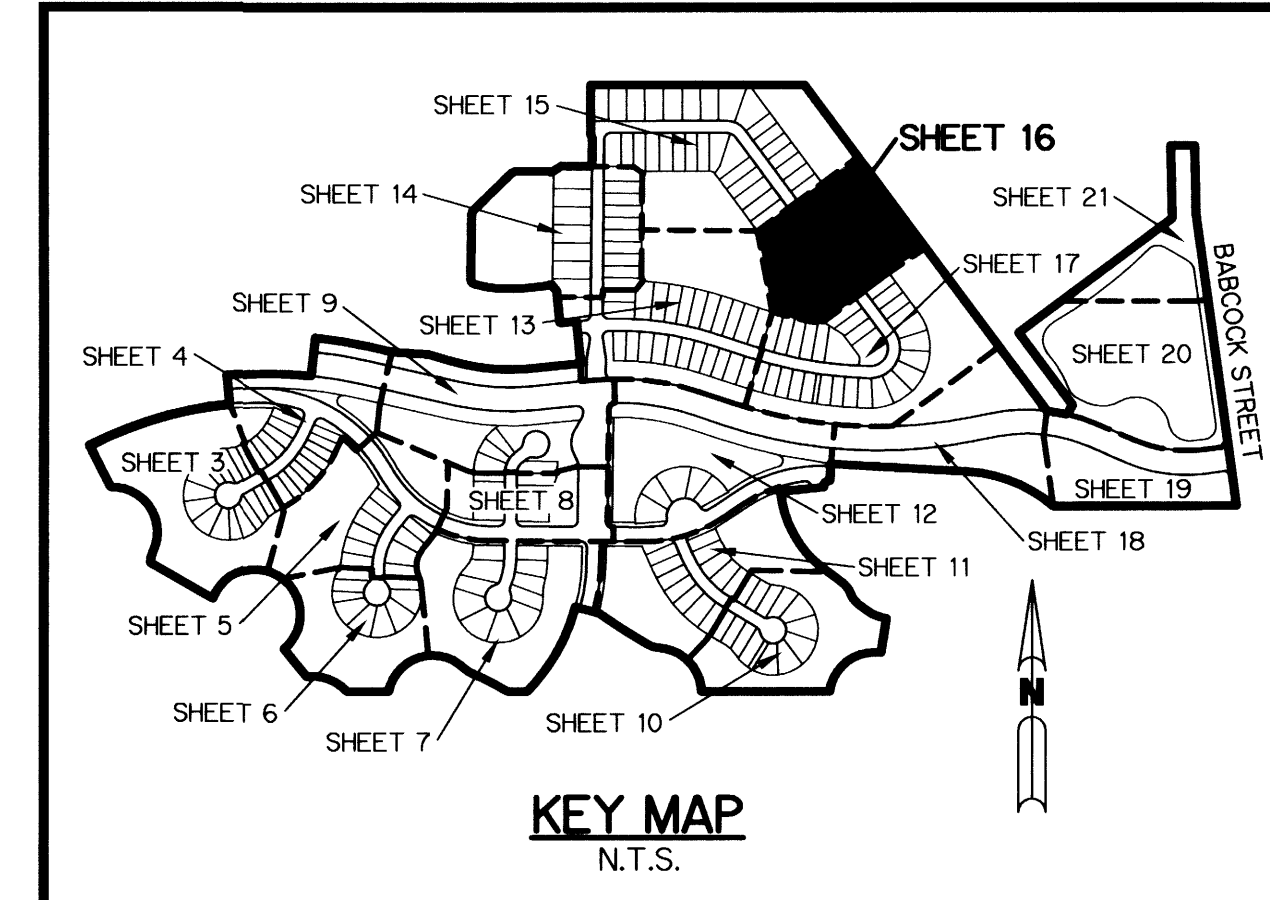
SECTIONS 3 & 4, TWP. 30 S, RANGE 37 E



NORTH 1/2 OF THE NORTHEAST 1/4 SECTION 4, TOWNSHIP 30 SOUTH, RANGE 37 EAST

THIS INSTRUMENT PREPARED BY
 STEVEN J. HYDE, P.S.M. LS-6436, STATE OF FLORIDA
 ARCADIS LNW
 LAWSON, NOBLE AND WEBB, INC.
 ENGINEERS PLANNERS SURVEYORS
 590 NW PEACOCK BLVD. SUITE 9
 PORT ST. LUCIE, FLORIDA 34986
 LB 6674

- LEGEND:**
- - PERMANENT REFERENCE MONUMENT, LB #6674
 - ▲ - PERMANENT CONTROL POINT, LB #6674
 - Δ - DELTA ANGLE
 - ⊙ - CENTERLINE
 - AC. - ACRE(S)
 - BE - BUFFER EASEMENT
 - CB - CHORD BEARING
 - CH - CHORD LENGTH
 - D.B. - DEED BOOK
 - D.E. - DRAINAGE EASEMENT
 - F.P.L. - FLORIDA POWER & LIGHT
 - L - ARC LENGTH
 - L.A.E. - LIMITED ACCESS EASEMENT
 - L.M.A.E. - LAKE MAINTENANCE ACCESS EASEMENT
 - L.M.E. - LAKE MAINTENANCE EASEMENT
 - L.M.A.I.E. - LAKE MAINTENANCE ACCESS IRRIGATION EASEMENT
 - N.R. - NOT RADIAL
 - N.T.S. - NOT TO SCALE
 - O.R.B. - OFFICIAL RECORD BOOK
 - O.S. - OPEN SPACE
 - P.A.E. - PEDESTRIAN ACCESS EASEMENT
 - P.B. - PLAT BOOK
 - PGS. - PAGES
 - P.O.B. - POINT OF BEGINNING
 - P.O.C. - POINT OF COMMENCEMENT
 - P.R.M. - PERMANENT REFERENCE MONUMENT
 - P.S.M. - PROFESSIONAL SURVEYOR AND MAPPER
 - R - RADIUS
 - RAD - RADIAL
 - R/W - RIGHT-OF-WAY
 - S.M.T. - STORMWATER MANAGEMENT TRACT
 - S.T. - SURVEY TIE
 - U.E. - UTILITY EASEMENT



REVISIONS	DATE	BY	CK
STREET NAMES	11/30/05	SJH	SJH