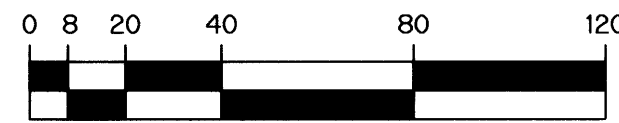


WATERSTONE PLAT ONE P.U.D.

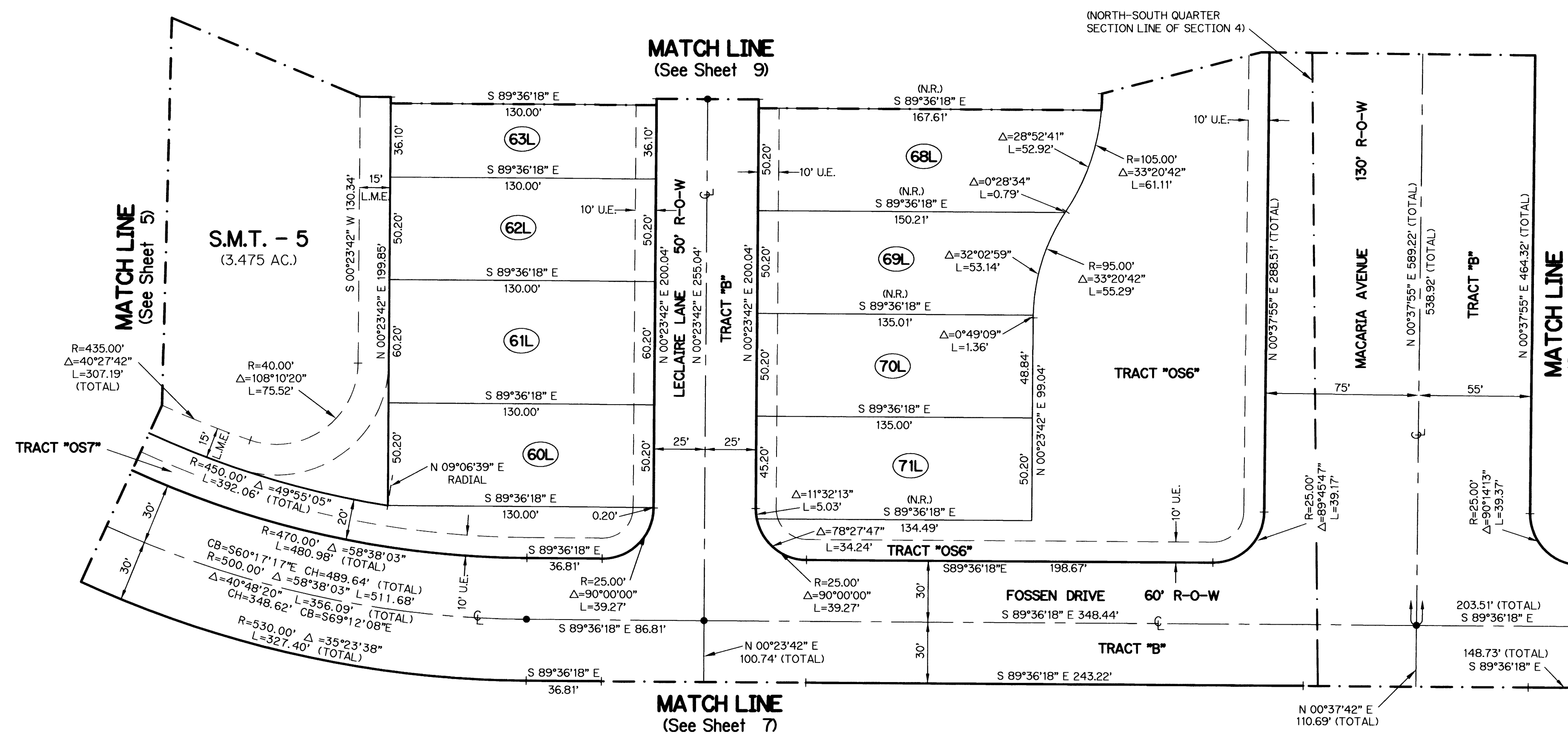
A PARCEL OF LAND BEING IN A PORTION OF SECTIONS 3 & 4, TOWNSHIP 30 SOUTH, RANGE 37 EAST, CITY OF PALM BAY, BREVARD COUNTY, FLORIDA.

SHEET 8 OF 21 SEPTEMBER, 2005



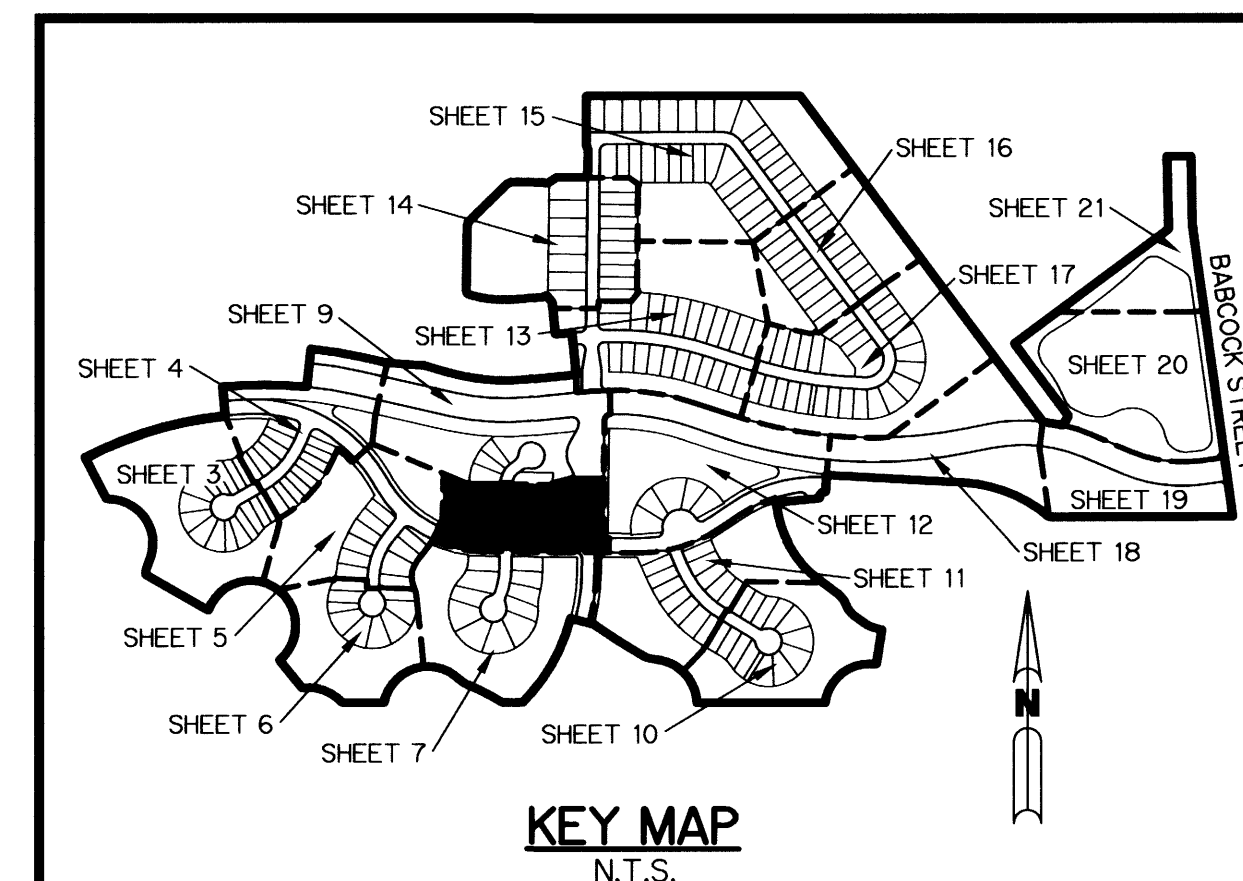
SCALE: 1" = 40'

THIS INSTRUMENT PREPARED BY
 STEVEN J. HYDE, P.S.M. LS-6436, STATE OF FLORIDA
 ARCADIS LNW
 LAWSON, NOBLE AND WEBB, INC.
 ENGINEERS PLANNERS SURVEYORS
 590 NW PEACOCK BLVD. SUITE 9
 PORT ST. LUCIE, FLORIDA 34986
 LB 6674



LEGEND:

- - PERMANENT REFERENCE MONUMENT, LB #6674
- - PERMANENT CONTROL POINT, LB #6674
- Δ - DELTA ANGLE
- ⊖ - CENTERLINE
- AC - ACRES(S)
- BE - BUFFER EASEMENT
- CB - CHORD BEARING
- CH - CHORD LENGTH
- D.B. - DEED BOOK
- D.E. - DRAINAGE EASEMENT
- F.P.L. - FLORIDA POWER & LIGHT
- L - ARC LENGTH
- L.A.E. - LIMITED ACCESS EASEMENT
- L.M.A.E. - LAKE MAINTENANCE ACCESS EASEMENT
- L.M.E. - LAKE MAINTENANCE EASEMENT
- L.M.A.I.E. - LAKE MAINTENANCE ACCESS IRRIGATION EASEMENT
- N.R. - NOT RADIAL
- N.T.S. - NOT TO SCALE
- O.R.B. - OFFICIAL RECORD BOOK
- O.S. - OPEN SPACE
- P.A.E. - PEDESTRIAN ACCESS EASEMENT
- P.B. - PLAT BOOK
- PGS. - PAGES
- P.O.B. - POINT OF BEGINNING
- P.O.C. - POINT OF COMMENCEMENT
- P.R.M. - PERMANENT REFERENCE MONUMENT
- P.S.M. - PROFESSIONAL SURVEYOR AND MAPPER
- R - RADIUS
- RAD - RADIAL
- R/W - RIGHT-OF-WAY
- S.M.T. - STORMWATER MANAGEMENT TRACT
- S.T. - SURVEY TIE
- U.E. - UTILITY EASEMENT



KEY MAP
N.T.S.

REVISIONS	DATE	BY	CK
STREET NAMES	11/30/05	SJH	SJH
WEST R-O-W OF MACARIA AVENUE	03/16/06	SJH	SJH