

# WATERSTONE PLAT ONE P.U.D.

A PARCEL OF LAND BEING IN A PORTION OF SECTIONS 3 & 4, TOWNSHIP 30 SOUTH, RANGE 37 EAST, CITY OF PALM BAY, BREVARD COUNTY, FLORIDA.

SHEET 7 OF 21 SEPTEMBER, 2005

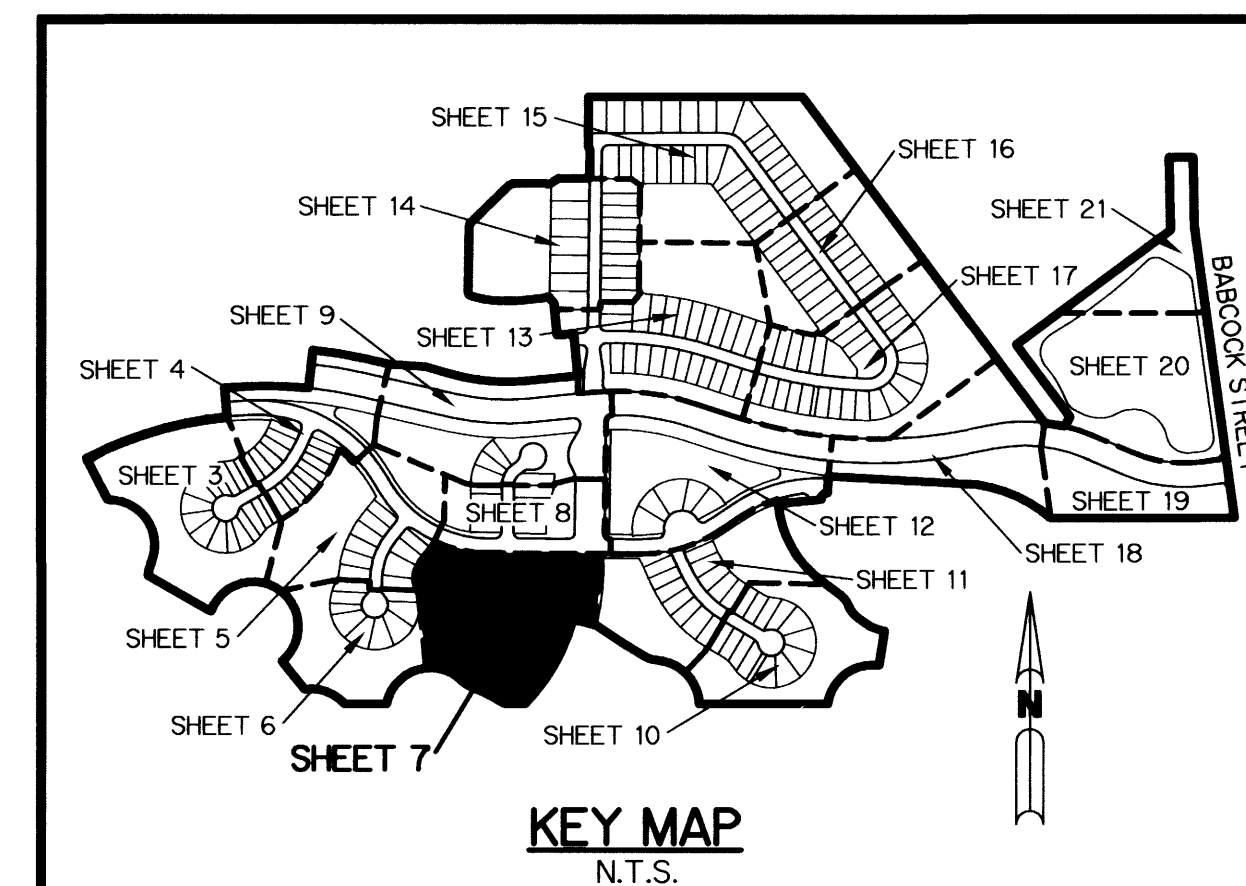
THIS INSTRUMENT PREPARED BY  
 STEVEN J. HYDE, P.S.M. LS-6436, STATE OF FLORIDA  
 ARCADIS LNW  
 LAWSON, NOBLE AND WEBB, INC.  
 ENGINEERS PLANNERS SURVEYORS  
 590 NW PEACOCK BLVD. SUITE 9  
 PORT ST. LUCIE, FLORIDA 34986  
 LB 6674



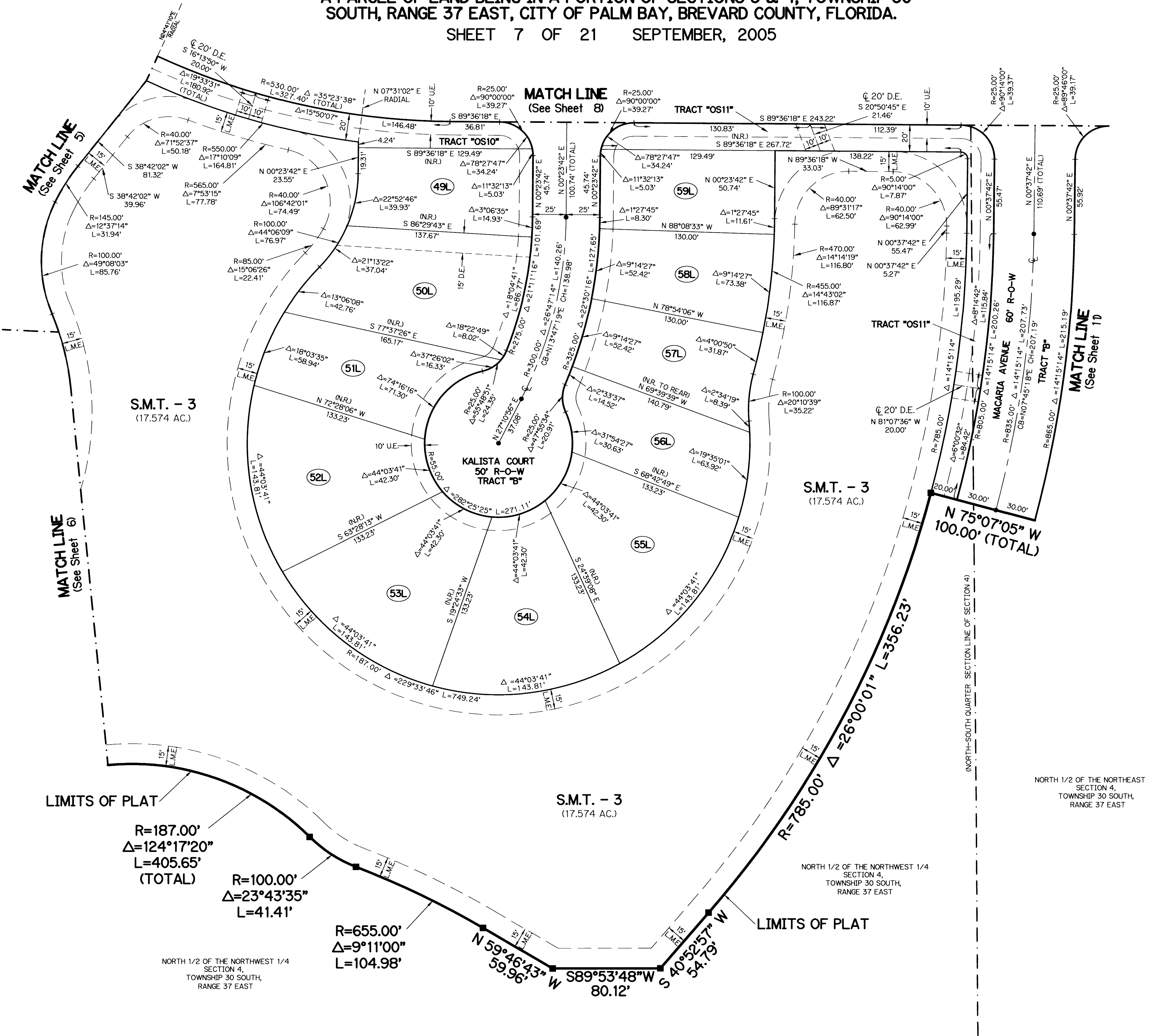
SCALE: 1" = 40'

**LEGEND:**

- - PERMANENT REFERENCE MONUMENT, LB #6674
- - PERMANENT CONTROL POINT, LB #6674
- △ - DELTA ANGLE
- - CENTERLINE
- AC, AC(S) - ACRES(S)
- BE - BUFFER EASEMENT
- CB - CHORD BEARING
- CH - CHORD LENGTH
- D.B. - DEED BOOK
- D.E. - DRAINAGE EASEMENT
- F.P.L. - FLORIDA POWER & LIGHT
- L - ARC LENGTH
- L.A.E. - LIMITED ACCESS EASEMENT
- L.M.A.E. - LAKE MAINTENANCE ACCESS EASEMENT
- L.M.E. - LAKE MAINTENANCE EASEMENT
- L.M.A.I.E. - LAKE MAINTENANCE ACCESS EASEMENT
- NR - NOT RADIAL
- N.T.S. - NOT TO SCALE
- O.R.B. - OFFICIAL RECORD BOOK
- O.S. - OPEN SPACE
- P.A.E. - PEDESTRIAN ACCESS EASEMENT
- P.B. - PLAT BOOK
- PGS. - PAGES
- P.O.B. - POINT OF BEGINNING
- P.O.C. - POINT OF COMMENCEMENT
- P.R.M. - PERMANENT REFERENCE MONUMENT
- P.S.M. - PROFESSIONAL SURVEYOR AND MAPPER
- R - RADIUS
- RAD - RADIAL
- R/W - RIGHT-OF-WAY
- S.M.T. - STORMWATER MANAGEMENT TRACT
- S.T. - SURVEY TIE
- U.E. - UTILITY EASEMENT



KEY MAP  
N.T.S.



LIMITS OF PLAT

R=187.00'  
 Δ=124°17'20"  
 L=405.65'  
 (TOTAL)

R=100.00'  
 Δ=23°43'35"  
 L=41.41'

R=655.00'  
 Δ=9°11'00"  
 L=104.98'

NORTH 1/2 OF THE NORTHWEST 1/4  
 SECTION 4,  
 TOWNSHIP 30 SOUTH,  
 RANGE 37 EAST

S.M.T. - 3  
 (17.574 AC.)

NORTH 1/2 OF THE NORTHWEST 1/4  
 SECTION 4,  
 TOWNSHIP 30 SOUTH,  
 RANGE 37 EAST

LIMITS OF PLAT

N 59°46'43" W 59.96'  
 S 89°53'48" W 80.12'  
 S 40°52'57" W 54.79'

(EAST-WEST QUARTER SECTION LINE OF SECTION 4)

NORTH 1/2 OF THE SOUTHWEST 1/4  
 SECTION 4,  
 TOWNSHIP 30 SOUTH,  
 RANGE 37 EAST

NORTH 1/2 OF THE SOUTHEAST 1/4  
 SECTION 4,  
 TOWNSHIP 30 SOUTH,  
 RANGE 37 EAST

REVISIONS	DATE	BY	CK
SOUTH BOUNDARY	11/02/05	SJH	SJH
STREET NAMES	11/30/05	SJH	SJH