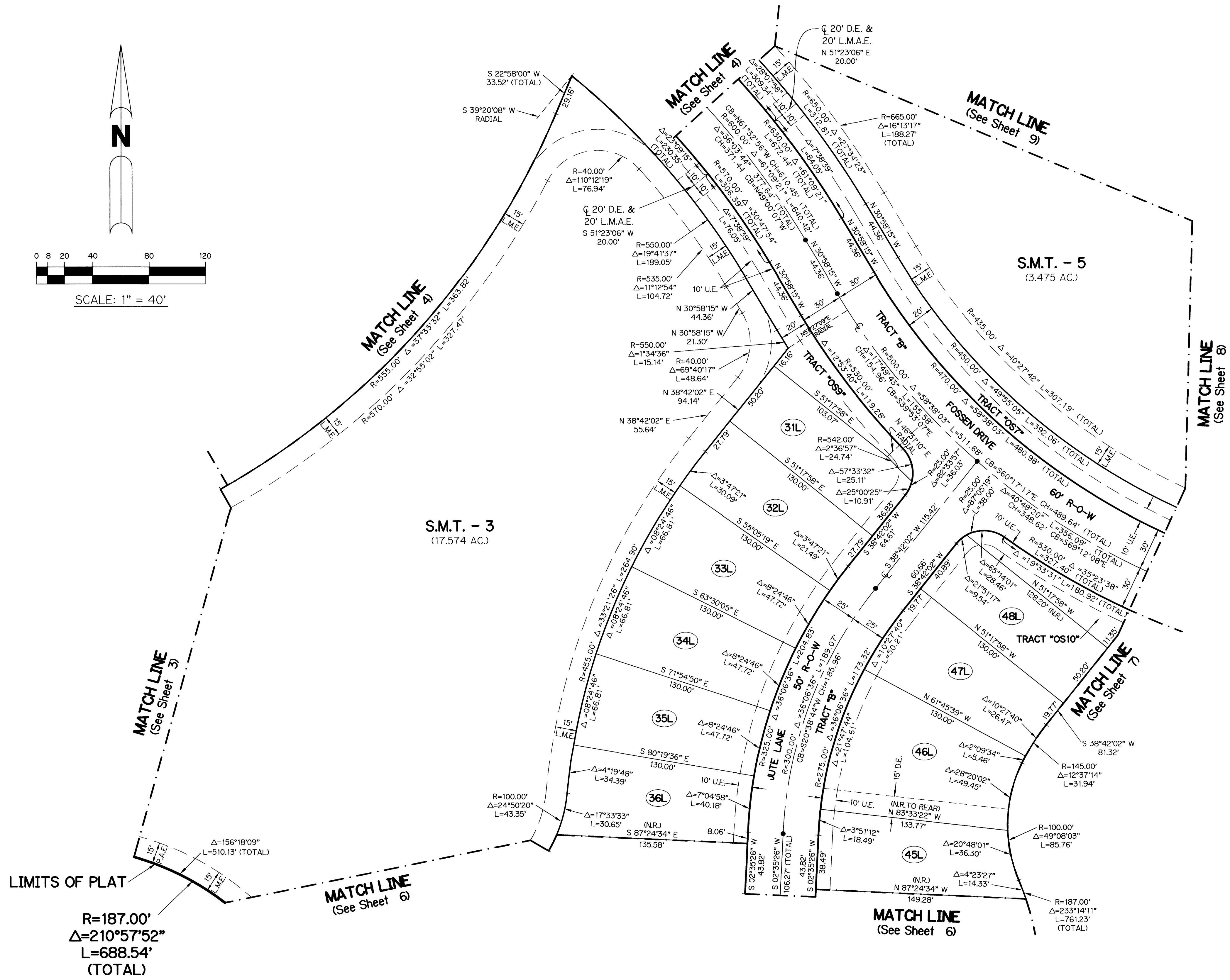
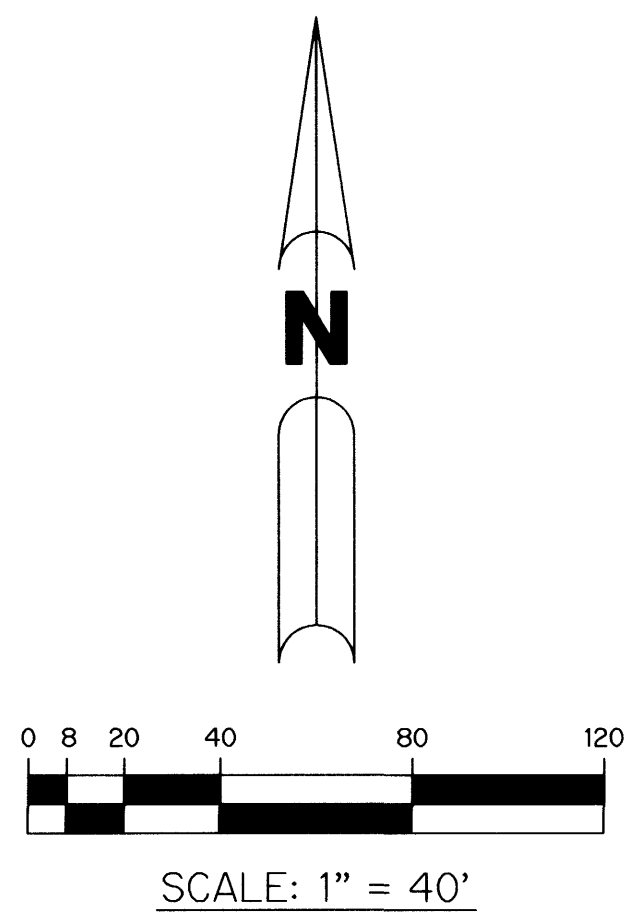


WATERSTONE PLAT ONE P.U.D.

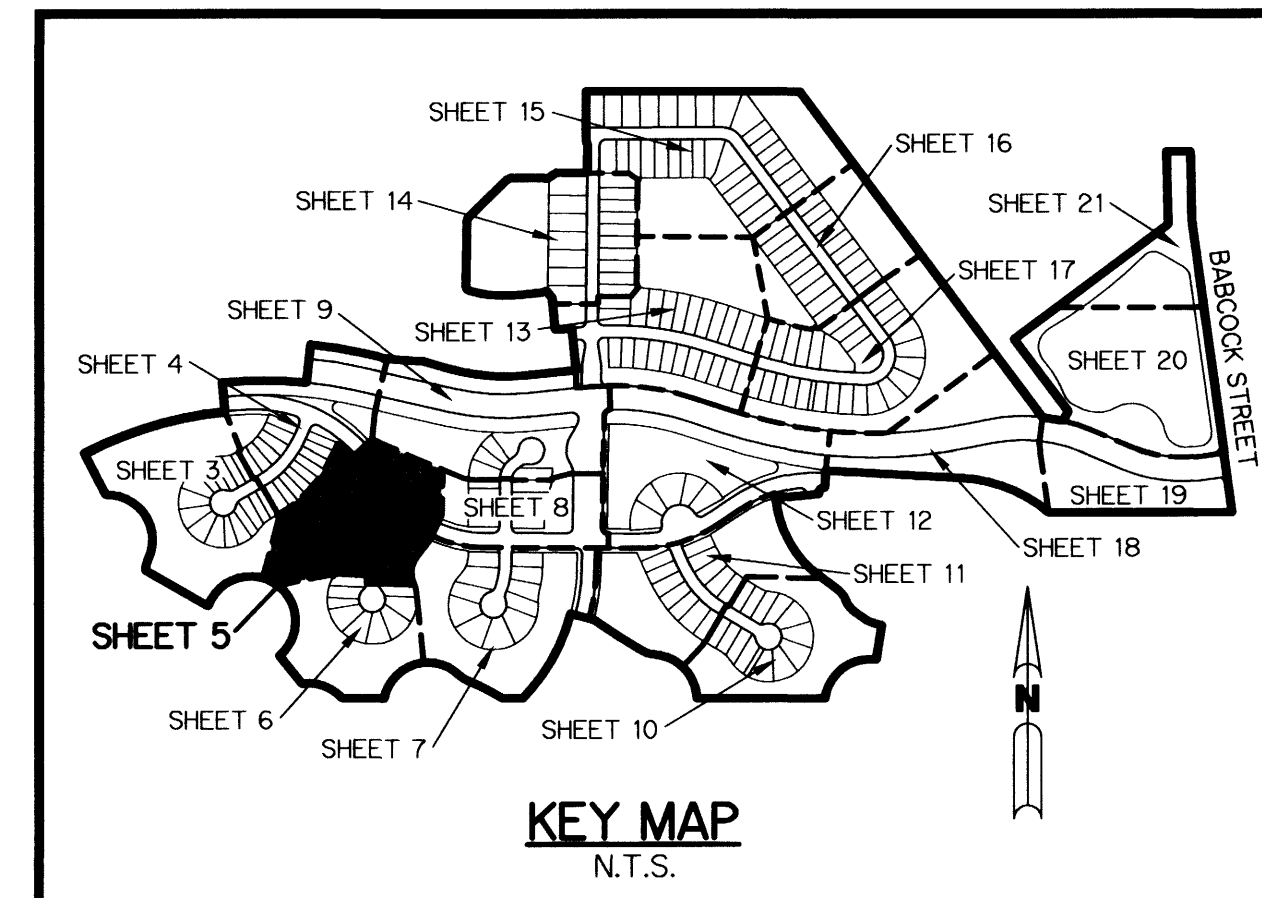
A PARCEL OF LAND BEING IN A PORTION OF SECTIONS 3 & 4, TOWNSHIP 30 SOUTH, RANGE 37 EAST, CITY OF PALM BAY, BREVARD COUNTY, FLORIDA.

SHEET 5 OF 21 SEPTEMBER, 2005

THIS INSTRUMENT PREPARED BY
 STEVEN J. HYDE, P.S.M. LS-6436, STATE OF FLORIDA
 ARCADIS LNW
 LAWSON, NOBLE AND WEBB, INC.
 ENGINEERS PLANNERS SURVEYORS
 590 NW PEACOCK BLVD., SUITE 9
 PORT ST. LUCIE, FLORIDA 34986
 LB 6674



- LEGEND:**
- - PERMANENT REFERENCE MONUMENT, LB #6674
 - - PERMANENT CONTROL POINT, LB #6674
 - Δ - DELTA ANGLE
 - - CENTERLINE
 - ⊕ - ACRES(S)
 - BE - BUFFER EASEMENT
 - CB - CHORD BEARING
 - CH - CHORD LENGTH
 - DB - DEED BOOK
 - D.E. - DRAINAGE EASEMENT
 - F.P.L. - FLORIDA POWER & LIGHT
 - L - ARC LENGTH
 - L.A.E. - LIMITED ACCESS EASEMENT
 - L.M.A.E. - LAKE MAINTENANCE ACCESS EASEMENT
 - L.M.E. - LAKE MAINTENANCE EASEMENT
 - L.M.A.I.E. - LAKE MAINTENANCE ACCESS IRRIGATION EASEMENT
 - N.R. - NOT RADIAL
 - N.T.S. - NOT TO SCALE
 - O.R.B. - OFFICIAL RECORD BOOK
 - O.S. - OPEN SPACE
 - P.A.E. - PEDESTRIAN ACCESS EASEMENT
 - P.B. - PLAT BOOK
 - PGS. - PAGES
 - P.O.B. - POINT OF BEGINNING
 - P.O.C. - POINT OF COMMENCEMENT
 - P.R.M. - PERMANENT REFERENCE MONUMENT
 - P.S.M. - PROFESSIONAL SURVEYOR AND MAPPER
 - R - RADIUS
 - RAD - RADIAL
 - R/W - RIGHT-OF-WAY
 - S.M.T. - STORMWATER MANAGEMENT TRACT
 - S.T. - SURVEY TIE
 - U.E. - UTILITY EASEMENT



REVISIONS	DATE	BY	CK
SOUTH BOUNDARY	11/02/05	SJH	SJH
STREET NAMES	11/30/05	SJH	SJH