

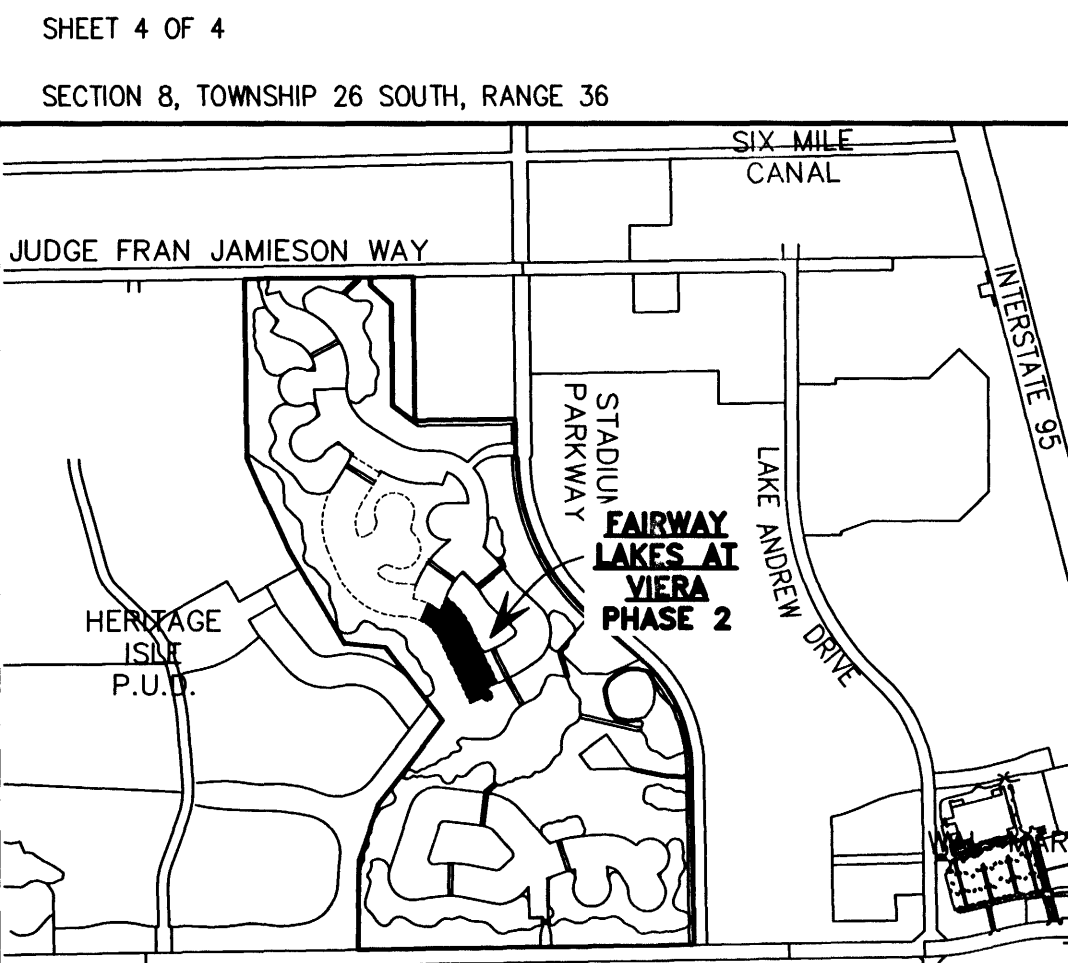
FAIRWAY LAKES AT VIERA- PHASE 2

**BEING A REPLAT OF A PORTION OF TRACT A, DURAN GOLF CLUB AS RECORDED IN PLAT BOOK 51 PAGES 63-65,
LYING AND BEING IN SECTION 8, TOWNSHIP 26 SOUTH, RANGE 36 EAST, VIERA, BREVARD COUNTY, FLORIDA**

SURVEY LEGEND

- PERMANENT REFERENCE MONUMENT SET (4"x4" CONCRETE MARKER WITH METAL DISK STAMPED "PRM LB 4905")
- PERMANENT REFERENCE MONUMENT FOUND (4"x4" CONCRETE MARKER WITH METAL DISK STAMPED "PRM LB 4905")
- ⊙ CONCRETE MONUMENT SET (4"x4" CONCRETE MARKER STAMPED "LB 4905")
- CONCRETE MONUMENT FOUND (MARKED AS NOTED)
- ⊠ 1/4 SECTION CORNER
- ⊕ BENCHMARK SET (MARKED AS NOTED)
- ⊕ BENCHMARK FOUND (MARKED AS NOTED)
- △ CONTROL POINT SET (MARKED AS NOTED)
- △ CONTROL POINT FOUND (MARKED AS NOTED)
- ⊙ PERMANENT CONTROL POINT SET (METAL MARKER WITH A METAL DISK STAMPED "PCP-LB 4905")
- ⊙ PERMANENT CONTROL POINT FOUND (METAL MARKER WITH A METAL DISK STAMPED "PCP-LB 4905")
- ⊗ PROPOSED KEY NOTE CALL OUT
- ⊗ EXISTING KEY NOTE CALL OUT

PLAT BOOK 53, PAGE 36



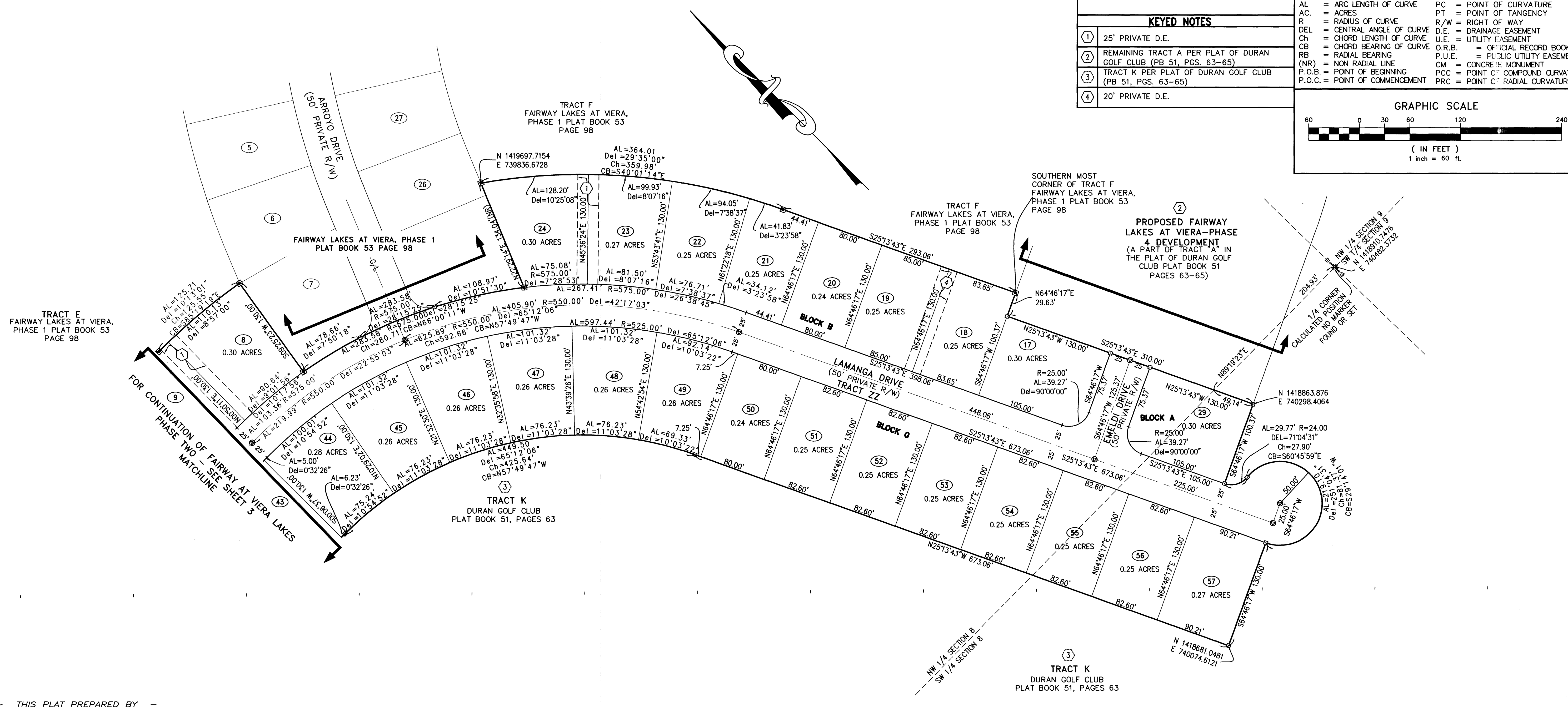
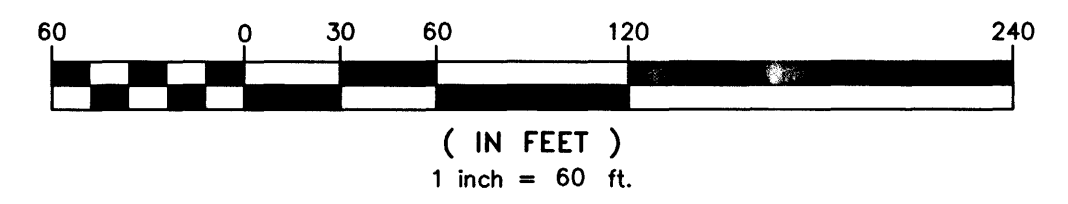
ABBREVIATIONS LEGEND

- | | |
|--------------------------------|-----------------------------------|
| AL = ARC LENGTH OF CURVE | PC = POINT OF CURVATURE |
| A.C. = ACRES | PT = POINT OF TANGENCY |
| R = RADIUS OF CURVE | R/W = RIGHT OF WAY |
| DEL = CENTRAL ANGLE OF CURVE | D.E. = DRAINAGE EASEMENT |
| Ch = CHORD LENGTH OF CURVE | U.E. = UTILITY EASEMENT |
| CB = CHORD BEARING OF CURVE | O.R.B. = OFFICIAL RECORD BOOK |
| RB = RADIAL BEARING | P.U.E. = PUBLIC UTILITY EASEMENT |
| (NR) = NON RADIAL LINE | CM = CONCRETE MONUMENT |
| P.O.B. = POINT OF BEGINNING | PCC = POINT OF COMPOUND CURVATURE |
| P.O.C. = POINT OF COMMENCEMENT | PRC = POINT OF RADIAL CURVATURE |

KEYED NOTES

- ① 25' PRIVATE D.E.
- ② REMAINING TRACT A PER PLAT OF DURAN GOLF CLUB (PB 51, PGS. 63-65)
- ③ TRACT K PER PLAT OF DURAN GOLF CLUB (PB 51, PGS. 63-65)
- ④ 20' PRIVATE D.E.

GRAPHIC SCALE



TRACT AREA SUMMARY			
TRACT ID	AREA (ACRES)	USE OF TRACT	OWNERSHIP & MAINTENANCE ENTITY
27	4.88	EMERGENCY AND SERVICE VEHICLE ACCESS PRIVATE RIGHT OF WAY UTILITIES	FAIRWAY LAKES DISTRICT ASSOCIATION, Inc. ITS SUCCESSOR AND/OR ASSIGNS

THIS PLAT PREPARED BY
B.S.E. CONSULTANTS, INC.
LESLIE E. HOWARD
PROFESSIONAL SURVEYOR AND MAPPER
FLORIDA LICENSE NO. 5611

B.S.E. CONSULTANTS, INC.
CONSULTING - ENGINEERING - LAND SURVEYING
312 SOUTH HARBOR CITY BOULEVARD, SUITE 4
MELBOURNE, FLORIDA PHONES (321) 726-3674 FAX (321) 723-1156
CERTIFICATE OF BUSINESS AUTHORIZATION: 4802
CERTIFICATE OF LAND SURVEYING BUSINESS AUTHORIZATION: LB0004905