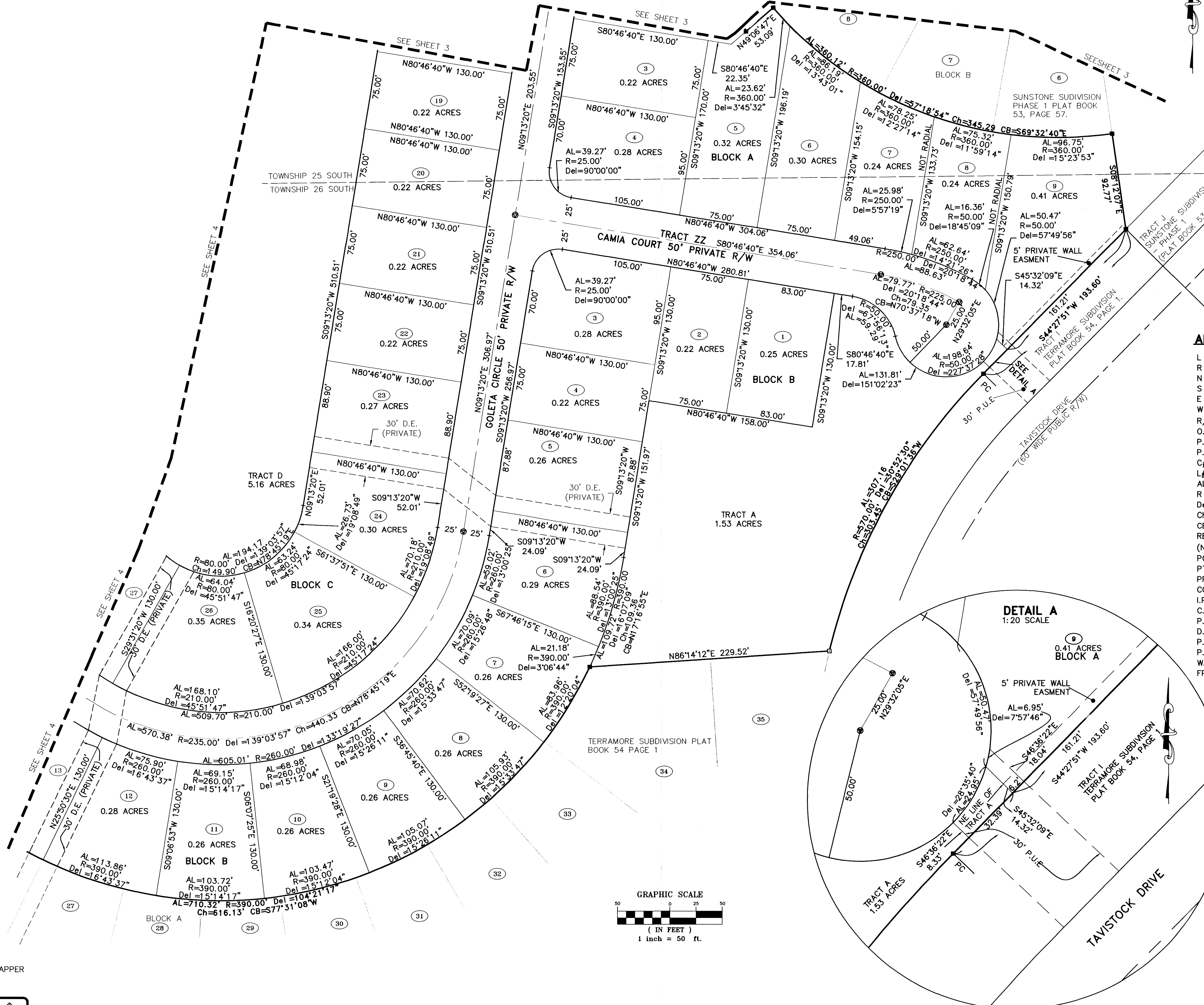
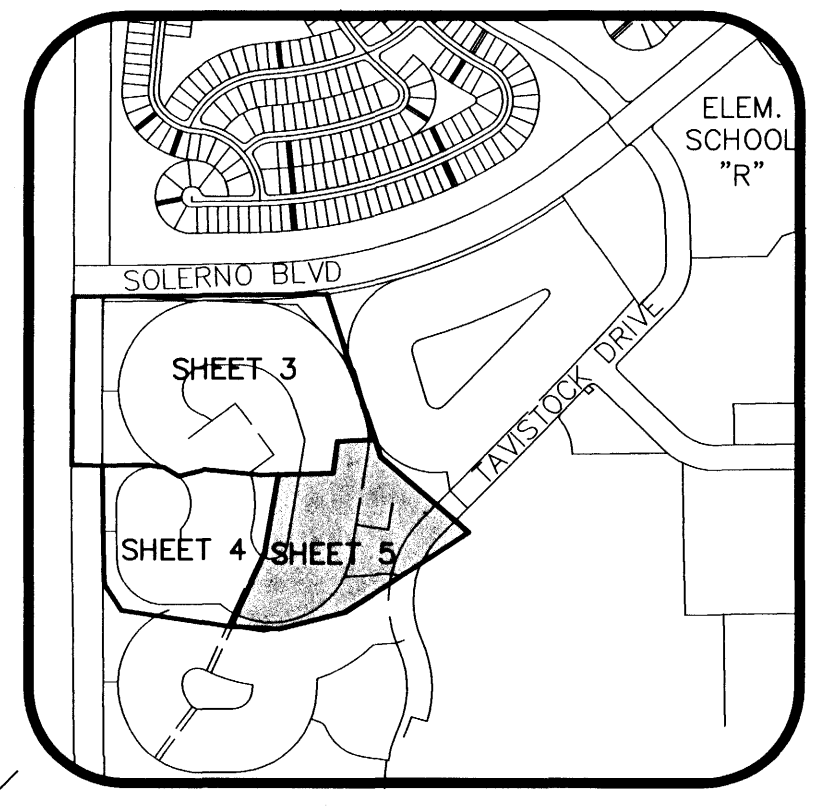


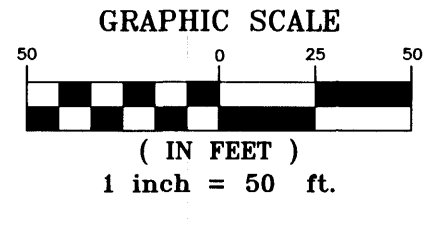
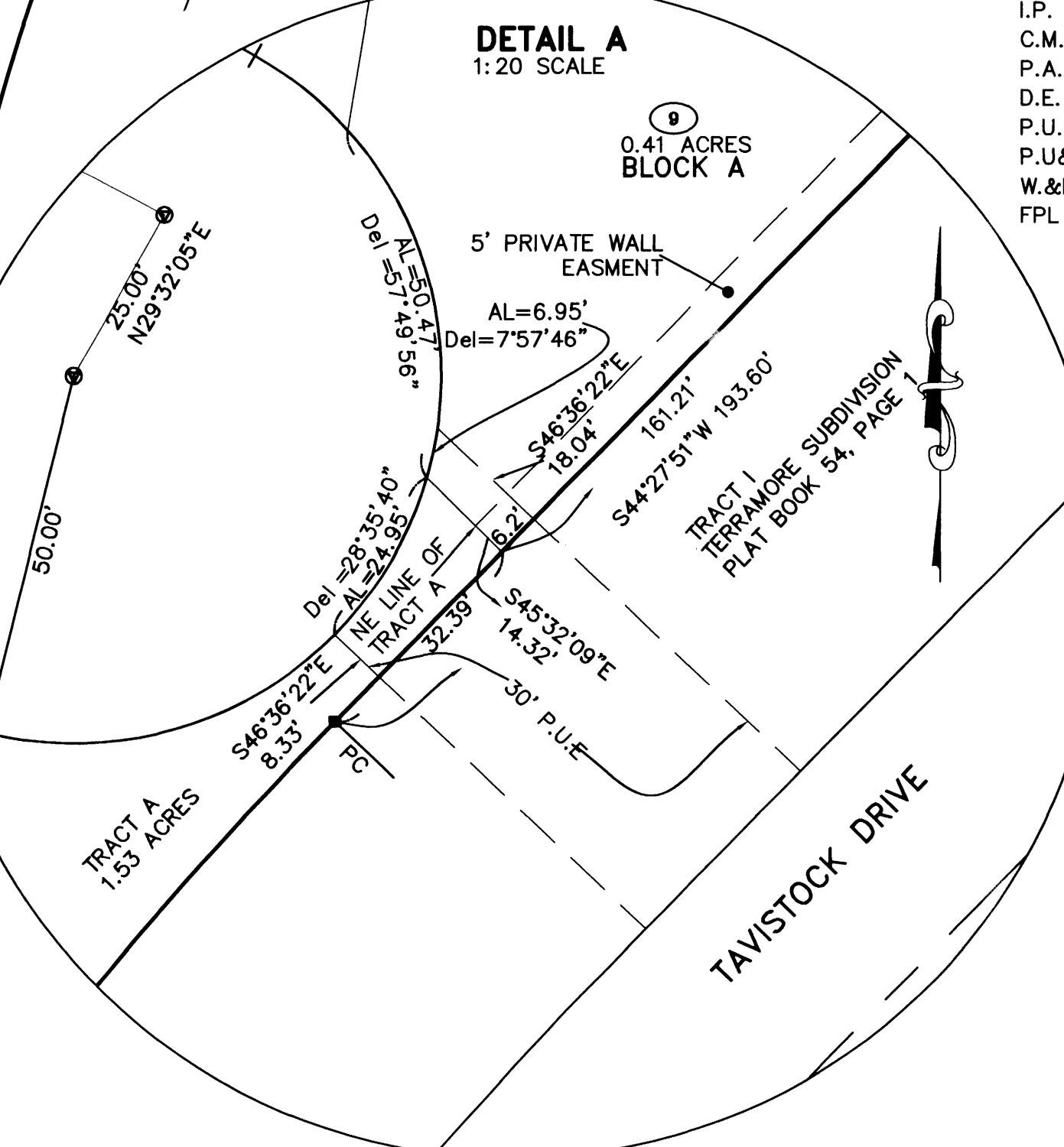
SUNSTONE SUBDIVISION PHASE TWO

A PORTION OF PARCEL 4, VIERA CENTRAL PUD AND BEING
 A PORTION OF SECTION 32, TOWNSHIP 25 SOUTH, RANGE 36 EAST AND
 A PORTION OF SECTION 5, TOWNSHIP 26 SOUTH, RANGE 36 EAST, BREVARD COUNTY, FLORIDA



ABBREVIATION

L	= LEFT
R	= RIGHT
N	= NORTH
S	= SOUTH
E	= EAST
W	= WEST
R/W	= RIGHT-OF-WAY
O.R.B.	= OFFICIAL RECORD BOOK
P.O.C.	= POINT OF COMMENCEMENT
P.O.B.	= POINT OF BEGINNING
C#	= CURVE TABLE LABEL
L#	= LINE TABLE LABEL
AL	= ARC LENGTH OF CURVE
R	= RADIUS OF CURVE
Del	= DELTA ANGLE OF CURVE
Ch	= CHORD LENGTH OF CURVE
CB	= CHORD BEARING OF CURVE
RB	= RADIAL BEARING
(NR)	= NON RADIAL LINE
PC	= POINT OF CURVATURE
PT	= POINT OF TANGENCY
PRC	= POINT OF REVERSE CURVE
COC	= CUSP OF CURVE
I.P.	= IRON PIPE
C.M.	= CONCRETE MONUMENT
P.A.E.	= PRIVATE ACCESS EASEMENT
D.E.	= PRIVATE DRAINAGE EASEMENT
P.U.E.	= PUBLIC UTILITY EASEMENT
P.U.&D.E.	= PUBLIC UTILITY & DRAINAGE EASEMENT
W.&M.E	= WALL & MAINTENANCE EASEMENT
FPL	= FLORIDA POWER & LIGHT



LEGEND

	SECTION CORNER FOUND (MARKED AS NOTED)
	PERMANENT CONTROL POINT SET (METAL MARKER WITH A METAL DISK STAMPED "PCP-LB 4905")
	PERMANENT REFERENCE MONUMENT SET (4"x4" CONCRETE MARKER WITH METAL DISK STAMPED "PRM LB 4905")
	PERMANENT REFERENCE MONUMENT FOUND (4"x4" CONCRETE MARKER WITH METAL DISK STAMPED "PRM LB 4905")
	CONCRETE MONUMENT SET (4"x4" CONCRETE MARKER STAMPED "LB 4905")
	CONCRETE MONUMENT FOUND (4"x4" CONCRETE MARKER STAMPED "LB 4905")

THIS PLAT PREPARED BY —
 LESLIE E. HOWARD, PROFESSIONAL SURVEYOR AND MAPPER
 FLORIDA LICENCE NO. 5611
 B.S.E. CONSULTANTS, INC. LB No. 4905

B.S.E. CONSULTANTS, INC.
 CONSULTING - ENGINEERING - LAND SURVEYING
 312 SOUTH HARBOR CITY BOULEVARD, SUITE 4
 MELBOURNE, FLORIDA PHONE: (321) 728-3874 FAX: (321) 723-1159
 CERTIFICATE OF BUSINESS AUTHORIZATION: 4905
 CERTIFICATE OF LAND SURVEYING BUSINESS AUTHORIZATION: LB0004905

DATE: 2-24-06
 DWG: 10758315

NOTICE: THIS PLAT, AS RECORDED IN ITS GRAPHIC FORM, IS THE OFFICIAL DEPICTION OF THE SUBDIVIDED LANDS DESCRIBED HEREIN AND WILL IN NO CIRCUMSTANCES BE SUPPLANTED IN AUTHORITY BY ANY OTHER GRAPHIC OR DIGITAL FORM OF THE PLAT. THERE MAY BE ADDITIONAL RESTRICTIONS THAT ARE NOT RECORDED ON THIS PLAT THAT MAY BE FOUND IN THE PUBLIC RECORDS OF THIS COUNTY.