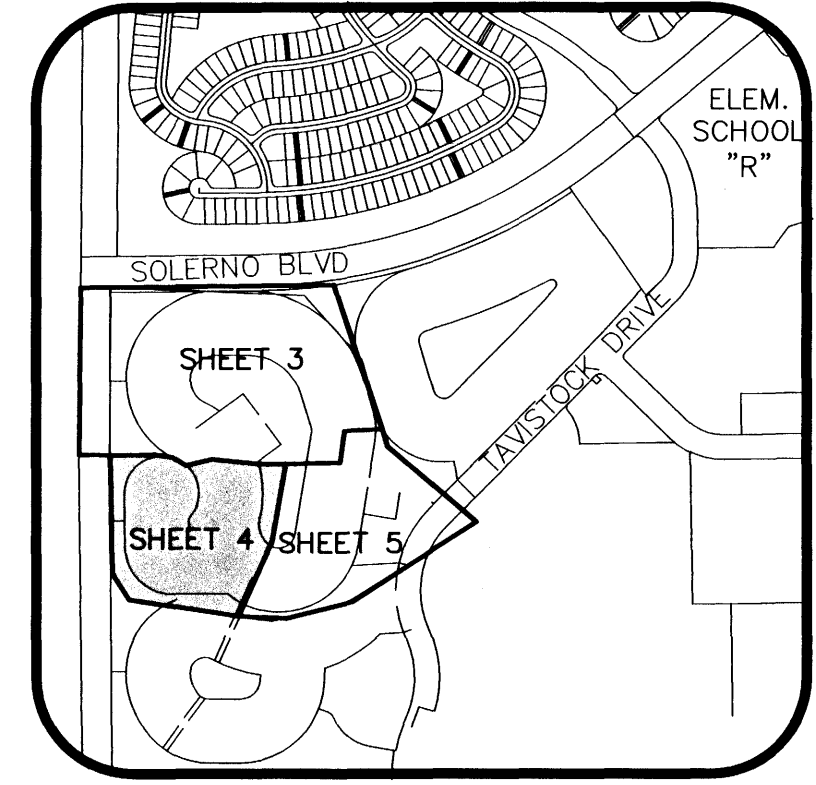
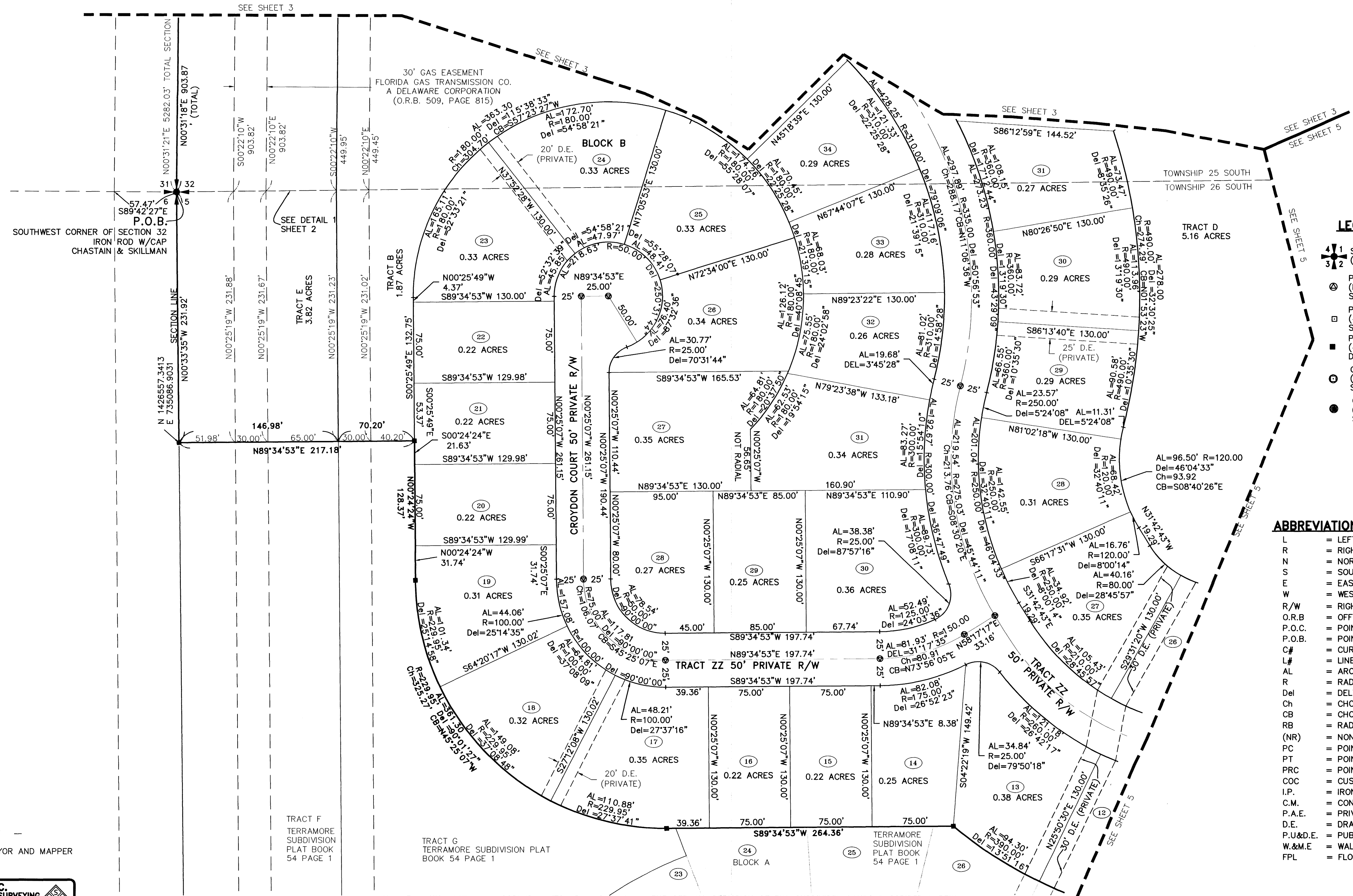
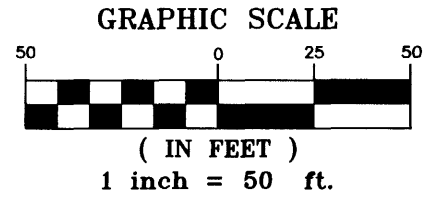


SUNSTONE SUBDIVISION PHASE TWO

A PORTION OF PARCEL 4, VIERA CENTRAL PUD AND BEING A PORTION OF SECTION 32, TOWNSHIP 25 SOUTH, RANGE 36 EAST AND A PORTION OF SECTION 5, TOWNSHIP 26 SOUTH, RANGE 36 EAST, BREVARD COUNTY, FLORIDA



KEY MAP
N.T.S.



LEGEND

- SECTION CORNER FOUND (MARKED AS NOTED)
- PERMANENT CONTROL POINT SET (METAL MARKER WITH A METAL DISK STAMPED "PCP-LB 4905")
- PERMANENT REFERENCE MONUMENT SET (4"x4" CONCRETE MARKER WITH METAL DISK STAMPED "PRM LB 4905")
- PERMANENT REFERENCE MONUMENT FOUND (4"x4" CONCRETE MARKER WITH METAL DISK STAMPED "PRM LB 4905")
- CONCRETE MONUMENT SET (4"x4" CONCRETE MARKER STAMPED "LB 4905")
- CONCRETE MONUMENT FOUND (4"x4" CONCRETE MARKER STAMPED "LB 4905")

ABBREVIATION

- L = LEFT
- R = RIGHT
- N = NORTH
- S = SOUTH
- E = EAST
- W = WEST
- R/W = RIGHT-OF-WAY
- O.R.B. = OFFICIAL RECORD BOOK
- P.O.C. = POINT OF COMMENCEMENT
- P.O.B. = POINT OF BEGINNING
- C# = CURVE TABLE LABEL
- L# = LINE TABLE LABEL
- AL = ARC LENGTH OF CURVE
- R = RADIUS OF CURVE
- Del = DELTA ANGLE OF CURVE
- Ch = CHORD LENGTH OF CURVE
- CB = CHORD BEARING OF CURVE
- RB = RADIAL BEARING
- (NR) = NON RADIAL LINE
- PC = POINT OF CURVATURE
- PT = POINT OF TANGENCY
- PRC = POINT OF REVERSE CURVE
- COC = CUSP OF CURVE
- I.P. = IRON PIPE
- C.M. = CONCRETE MONUMENT
- P.A.E. = PRIVATE ACCESS EASEMENT
- D.E. = DRAINAGE EASEMENT
- P.U.&D.E. = PUBLIC UTILITY & DRAINAGE EASEMENT
- W.&M.E. = WALL & MAINTENANCE EASEMENT
- FPL = FLORIDA POWER & LIGHT

THIS PLAT PREPARED BY
LESLIE E. HOWARD, PROFESSIONAL SURVEYOR AND MAPPER
FLORIDA LICENCE NO. 5611
B.S.E. CONSULTANTS, INC. LB No. 4905

B.S.E. CONSULTANTS, INC.
CONSULTING - ENGINEERING - LAND SURVEYING
312 SOUTH HARBOR CITY BOULEVARD, SUITE 4
MELBOURNE, FLORIDA PHONE: (321) 725-3674 FAX: (321) 723-1159
CERTIFICATE OF BUSINESS AUTHORIZATION #865
CERTIFICATE OF LAND SURVEYING BUSINESS AUTHORIZATION: LB0004905

DATE: 2-24-06
DWG. 10758314

NOTICE: THIS PLAT, AS RECORDED IN ITS GRAPHIC FORM, IS THE OFFICIAL DEPICTION OF THE SUBDIVIDED LANDS DESCRIBED HEREIN AND WILL IN NO CIRCUMSTANCES BE SUPPLANTED IN AUTHORITY BY ANY OTHER GRAPHIC OR DIGITAL FORM OF THE PLAT. THERE MAY BE ADDITIONAL RESTRICTIONS THAT ARE NOT RECORDED ON THIS PLAT THAT MAY BE FOUND IN THE PUBLIC RECORDS OF THIS COUNTY.