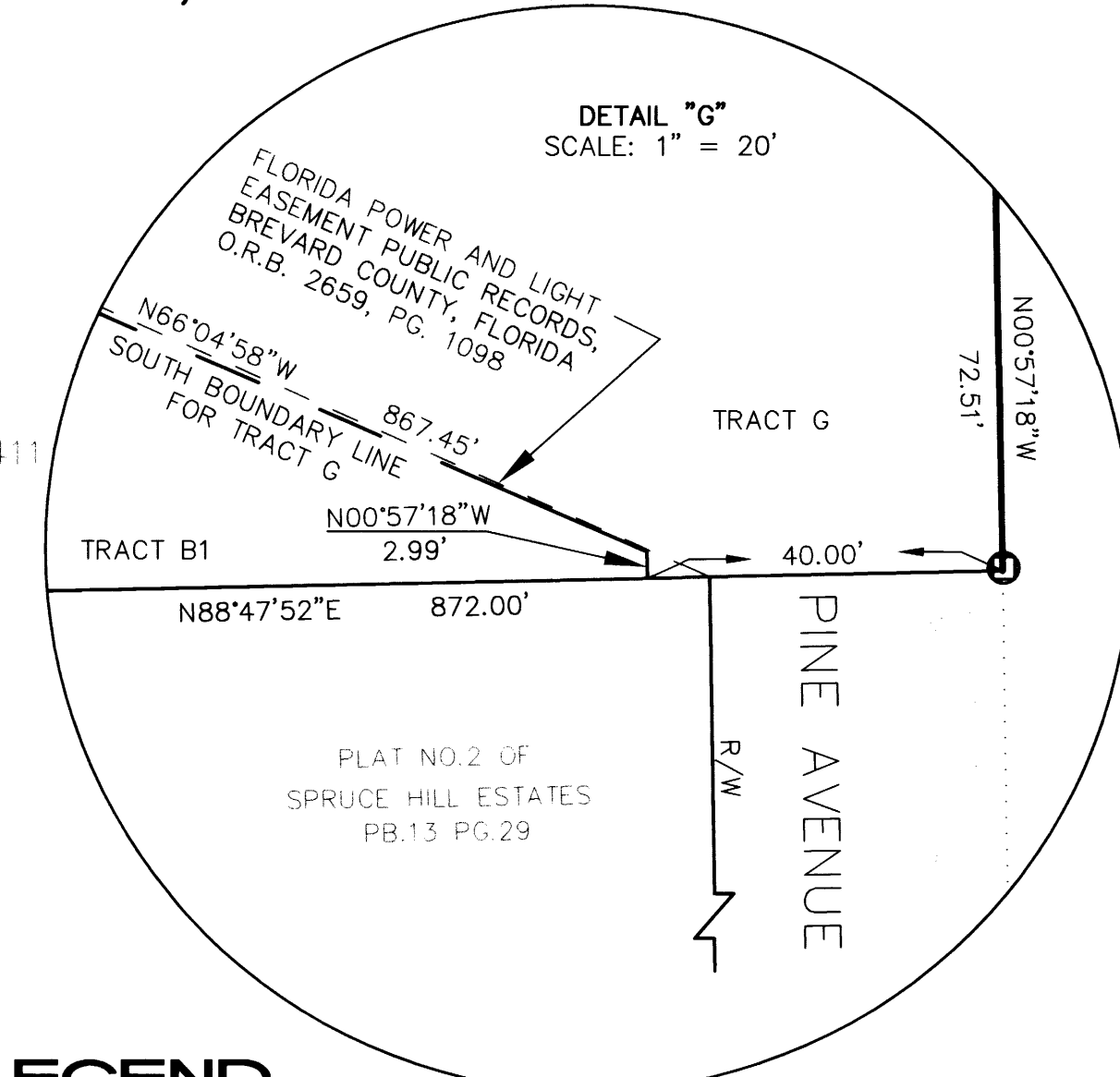
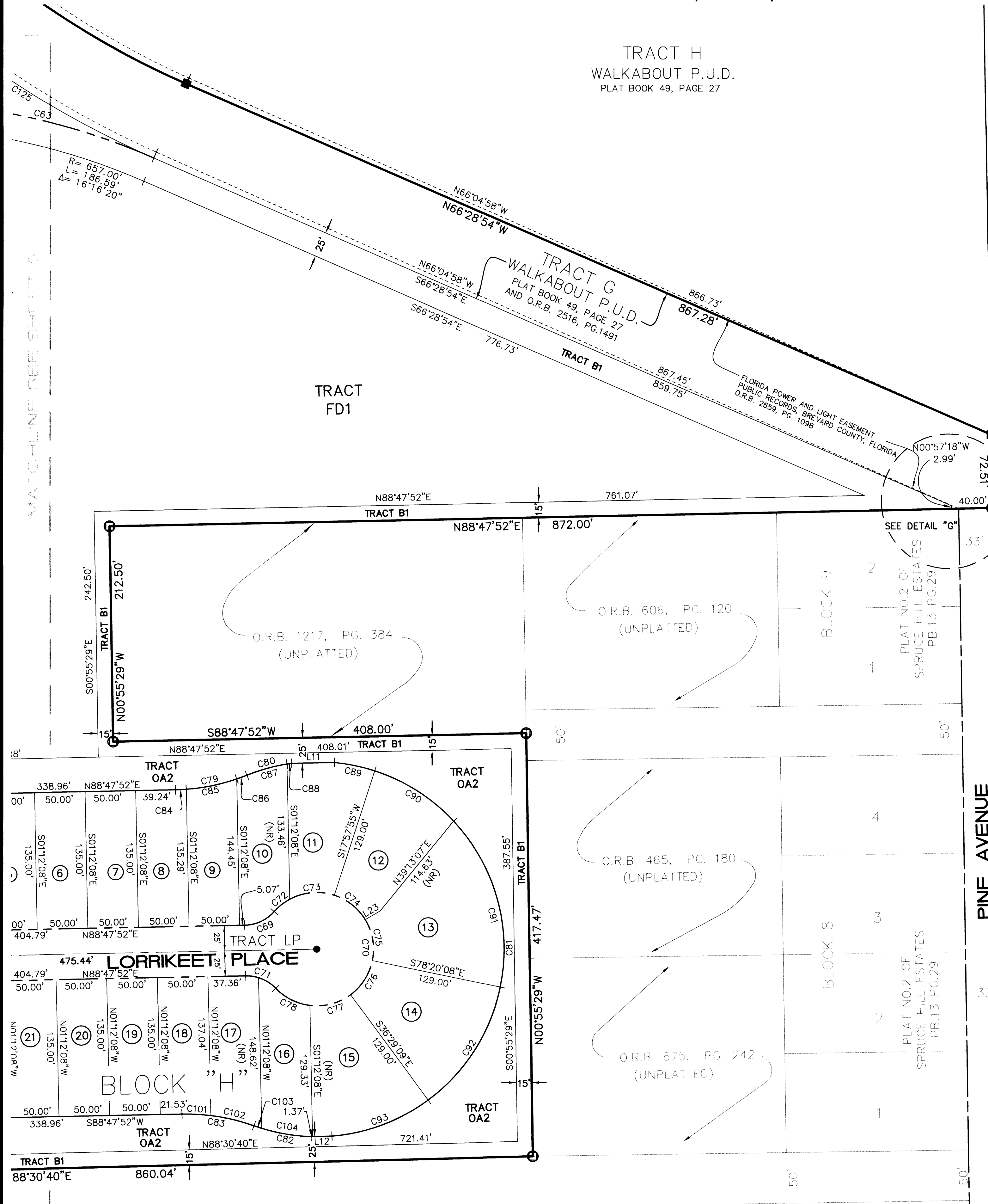


NEW SOUTH WALES AND LORRIKEET AT WALKABOUT

AUSTRALIAN WAY (PORTION OF POD 2 AND PODS 3, 5, 6 AND 7)

A REPLAT OF A PORTION OF TRACT A, F, G AND J WALKABOUT P.U.D. AS RECORDED IN PLAT BOOK 49, PAGE 27, OF THE PUBLIC RECORDS OF BREVARD COUNTY, FLORIDA, LYING IN SECTION 12 AND 13, TOWNSHIP 21 SOUTH, RANGE 34 EAST

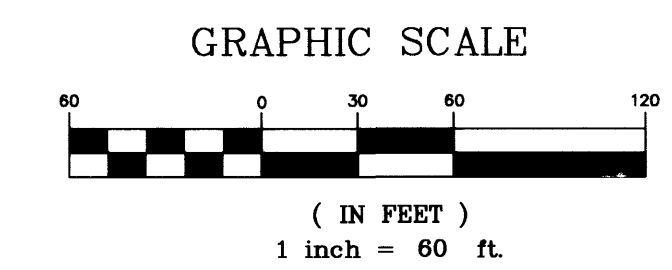
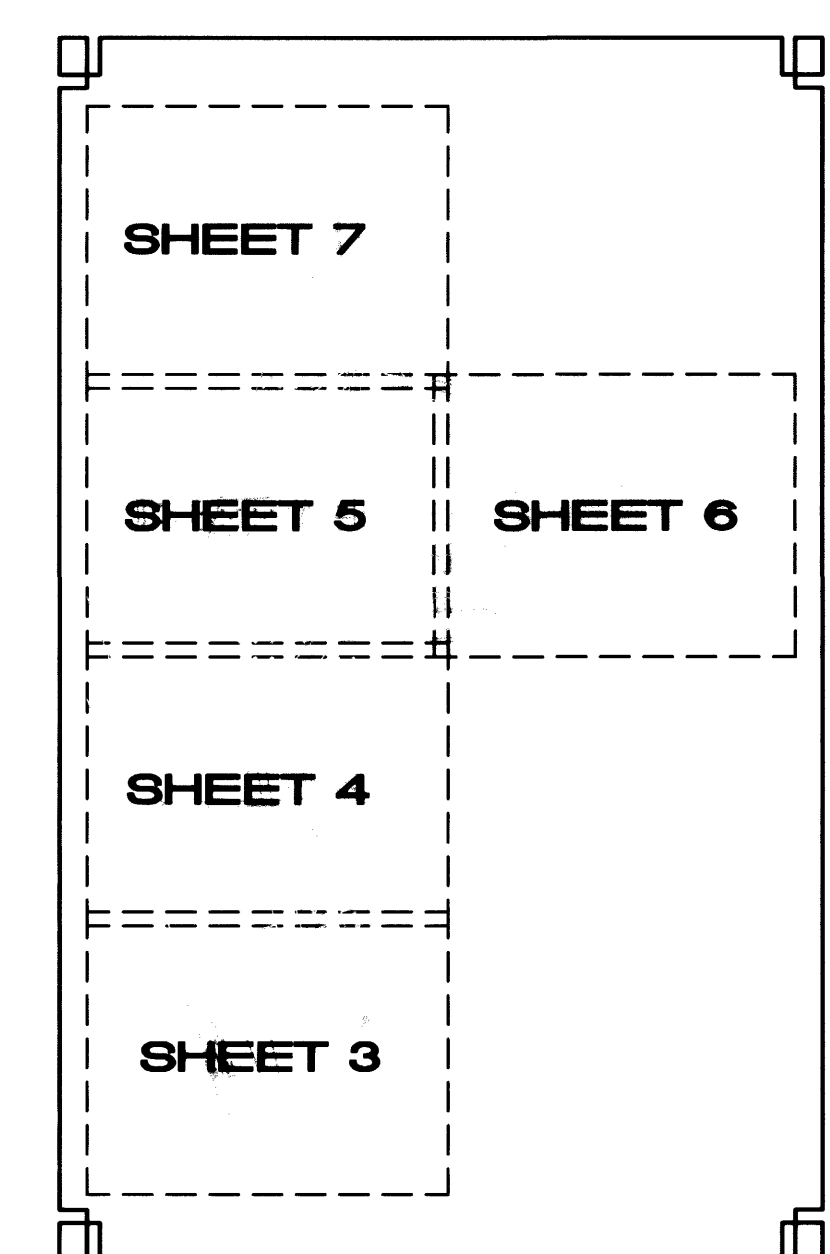


LINE	LENGTH	BEARING
L11	42.07'	N88°47'52"E
L12	20.59'	S88°30'40"W
L23	17.00'	S59°56'27"W

CURVE	RADIUS	LENGTH	DELTA	CHORD BEARING	CHORD
C32	722.00'	205.08'	16°16'20"	N74°37'04"W	204.36'
C63	682.00'	193.69'	16°16'20"	N74°37'04"W	193.04'
C69	40.00'	33.08'	47°23'02"	N65°06'21"E	32.15'
C70	56.00'	268.55'	274°46'04"	N01°12'08"W	75.83'
C71	40.00'	33.08'	47°23'02"	N67°30'37"W	32.15'
C72	56.00'	19.60'	20°02'58"	S51°26'19"W	19.50'
C73	56.00'	45.43'	46°30'06"	S84°42'52"W	44.21'
C74	56.00'	39.74'	40°39'40"	N51°42'15"W	38.91'
C75	56.00'	42.06'	43°02'17"	N09°51'16"W	41.08'
C76	56.00'	40.90'	41°50'59"	N32°35'22"E	40.00'
C77	56.00'	42.52'	43°30'05"	N75°15'53"E	41.50'
C78	56.00'	38.28'	39°09'58"	S63°24'05"E	37.54'
C79	200.00'	72.47'	20°45'41"	N78°25'02"E	72.07'
C80	185.00'	45.95'	14°13'55"	S75°09'09"W	45.83'
C81	185.00'	548.88'	169°59'34"	N00°19'26"E	368.59'
C82	185.00'	57.66'	17°51'27"	S79°22'10"E	57.43'
C83	200.00'	72.47'	20°45'41"	N80°49'17"W	72.07'
C84	200.00'	10.76'	3°05'02"	N87°15'22"E	10.76'
C85	200.00'	50.97'	14°36'07"	N78°24'47"E	50.83'
C86	200.00'	10.74'	3°04'32"	N69°34'28"E	10.73'
C87	185.00'	41.24'	12°46'18"	S74°25'20"W	41.15'
C88	185.00'	4.72'	1°27'37"	S81°32'18"W	4.71'
C89	185.00'	40.81'	12°38'16"	N78°21'13"W	40.72'
C90	185.00'	93.32'	28°54'09"	N57°35'01"W	92.34'
C91	185.00'	176.93'	54°47'48"	N15°44'02"W	170.26'
C92	185.00'	135.13'	41°50'59"	N32°35'22"E	132.14'
C93	185.00'	102.70'	31°48'22"	N69°25'02"E	101.38'
C101	200.00'	28.57'	08°11'01"	S87°06'37"E	28.54'
C102	200.00'	43.91'	12°34'40"	S76°43'47"E	43.82'
C103	185.00'	8.04'	02°29'20"	S71°41'07"E	8.04'
C104	185.00'	49.62'	15°22'07"	S80°36'50"E	49.47'
C125	915.43'	260.44'	16°18'03"	N58°19'53"W	259.56'
C126	915.43'	273.50'	17°07'05"	N28°28'06"W	272.49'

LEGEND

- | | | | |
|--------|----------------------------------|-----|-------------------------|
| P.B. | PLAT BOOK | CHB | CHORD BEARING |
| D.B. | DEED BOOK | CHD | CHORD DISTANCE |
| PG. | PAGE | PCP | PERMANENT CONTROL POINT |
| O.R.B. | OFFICIAL RECORD BOOK | NR | NON-RADIAL |
| P.U.D. | PLANNED UNIT DEVELOPMENT | R/W | RIGHT OF WAY |
| PRM | PERMANENT REFERENCE MONUMENT | --- | RIGHT OF WAY |
| PLS | PROFESSIONAL LAND SURVEYOR | --- | BOUNDARY LINE |
| LB | LICENSED BUSINESS | --- | EASEMENT LINE |
| CA | CENTRAL ANGLE (DELTA) | --- | SECTION LINE |
| R | RADIUS | --- | TRACT LINE |
| L | LENGTH | --- | SECTION CORNER |
| NO. | NUMBER | --- | EASEMENT |
| CONC. | CONCRETE | --- | CONSERVATION EASEMENT |
| ELEV. | ELEVATION | --- | |
| BM | BENCHMARK | --- | |
| P.R.C. | POINT OF REVERSE CURVATURE | --- | |
| P.C. | POINT OF CURVATURE | --- | |
| NTC | NON-TANGENT CURVE | --- | |
| P.O.C. | POINT ON CURVE | --- | |
| P.T. | POINT OF TANGENT | --- | |
| NGVD | NATIONAL GEODETIC VERTICAL DATUM | --- | |
| D.E. | DRAINAGE EASEMENT | --- | |
| ASSOC. | ASSOCIATION | --- | |
| FPL | FLORIDA POWER AND LIGHT | --- | |
| CL | CENTERLINE | --- | |
| D.E. | DRAINAGE EASEMENT | --- | |



CREECH ENGINEERS, INC.
 CIVILIZATION ENGINEERED
 4450 WEST EAU GALLIE BLVD., MELBOURNE, FL 32934 (321) 255-5434
 2000 N.E. JENSEN BEACH BLVD., JENSEN BEACH, FLORIDA 34957 (772) 283-1413
 707 EAST PARK AVENUE, TALLAHASSEE, FL 32301 (850) 841-1705
BOARD OF PROFESSIONAL ENGINEERS, CERTIFICATE OF AUTHORIZATION NUMBER 5139
 PROFESSIONAL SURVEYORS AND MAPPERS, AMENDED CERTIFICATE NO. LB-0006705