

NEW SOUTH WALES AND LORRIKEET AT WALKABOUT

AUSTRALIAN WAY (PORTION OF POD 2 AND PODS 3, 5, 6 AND 7)

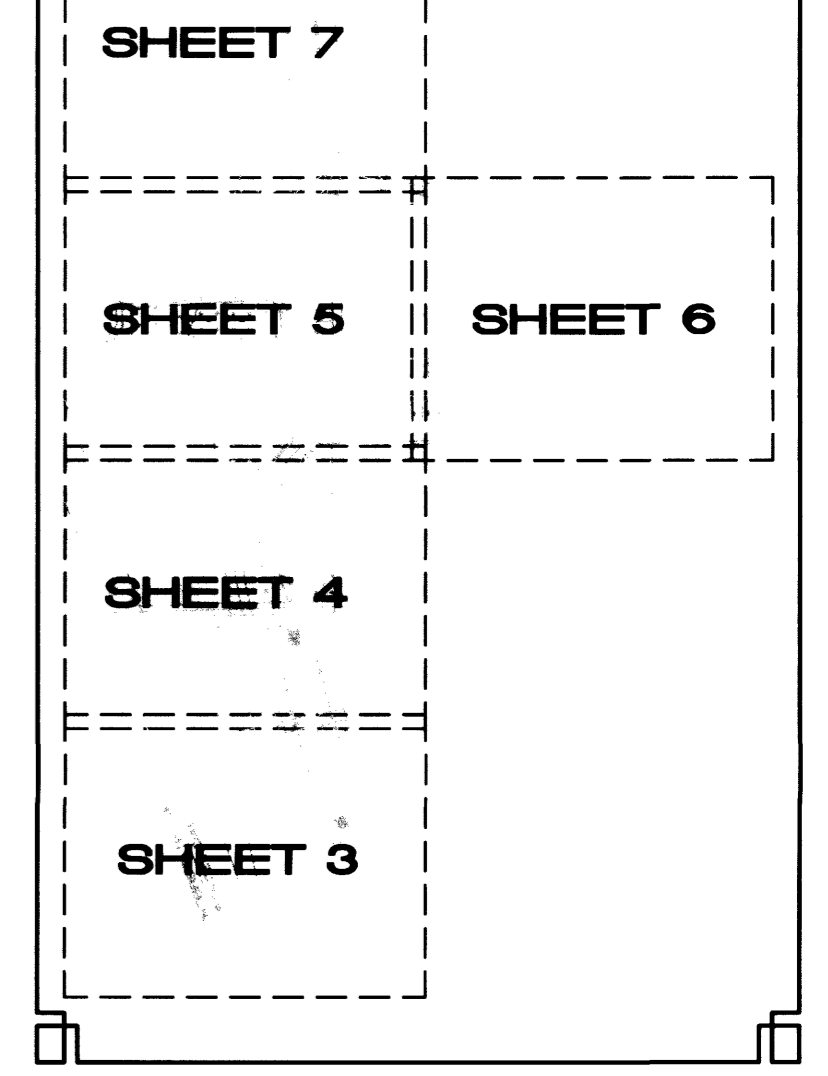
A REPLAT OF A PORTION OF TRACT A, F, G AND J WALKABOUT P.U.D. AS RECORDED IN PLAT BOOK 49, PAGE 27, OF THE PUBLIC RECORDS OF BREVARD COUNTY, FLORIDA, LYING IN SECTION 12 AND 13, TOWNSHIP 21 SOUTH, RANGE 34 EAST

LEGEND

- | | | | |
|--------|----------------------------------|-------|---|
| P.B. | PLAT BOOK | CHB | CHORD BEARING |
| D.B. | DEED BOOK | CHD | CHORD DISTANCE |
| PG. | PAGE | PCP | PERMANENT CONTROL POINT |
| O.R.B. | OFFICIAL RECORD BOOK | NR | NON-RADIAL |
| P.U.D. | PLANNED UNIT DEVELOPMENT | R/W | RIGHT OF WAY |
| PRM | PERMANENT REFERENCE MONUMENT | --- | BOUNDARY LINE |
| PLS | PROFESSIONAL LAND SURVEYOR | - - - | EASEMENT LINE |
| LB | LICENSED BUSINESS | --- | SECTION LINE |
| Δ | CENTRAL ANGLE (DELTA) | + | TRACT LINE |
| R | RADIUS | + | SECTION CORNER |
| L | LENGTH | + | EASEMENT |
| NO. | NUMBER | + | CONSERVATION EASEMENT |
| CONC. | CONCRETE | ○ | SET MAG NAIL WITH ALUMINIUM DISC |
| ELEV. | ELEVATION | ○ | STAMPED "CREECH LB 6705 PCP" |
| BM | BENCHMARK | ■ | SET 4 INCH DIAMETER ROUND CONC. MONUMENT |
| P.R.C. | POINT OF REVERSE CURVATURE | ■ | WITH 2 INCH ALUMINUM DISK STAMPED "PRM LB 6705" |
| P.C. | POINT OF CURVATURE | □ | FOUND 4 INCH DIAMETER ROUND CONC. MONUMENT WITH |
| NTC | NON-TANGENT CURVE | □ | 2 INCH ALUMINUM DISK STAMPED "PRM LB 6705" |
| P.O.C. | POINT ON CURVE | □ | FOUND 4" X 4" CONC. MONUMENT WITH |
| P.T. | POINT OF TANGENT | □ | NAIL AND DISK STAMPED "PLS 4014" |
| NGVD | NATIONAL GEODETIC VERTICAL DATUM | | |
| D.E. | DRAINAGE EASEMENT | | |
| ASSOC. | ASSOCIATION | | |
| FPL | FLORIDA POWER AND LIGHT | | |
| ℄ | CENTERLINE | | |
| D.E. | DRAINAGE EASEMENT | | |

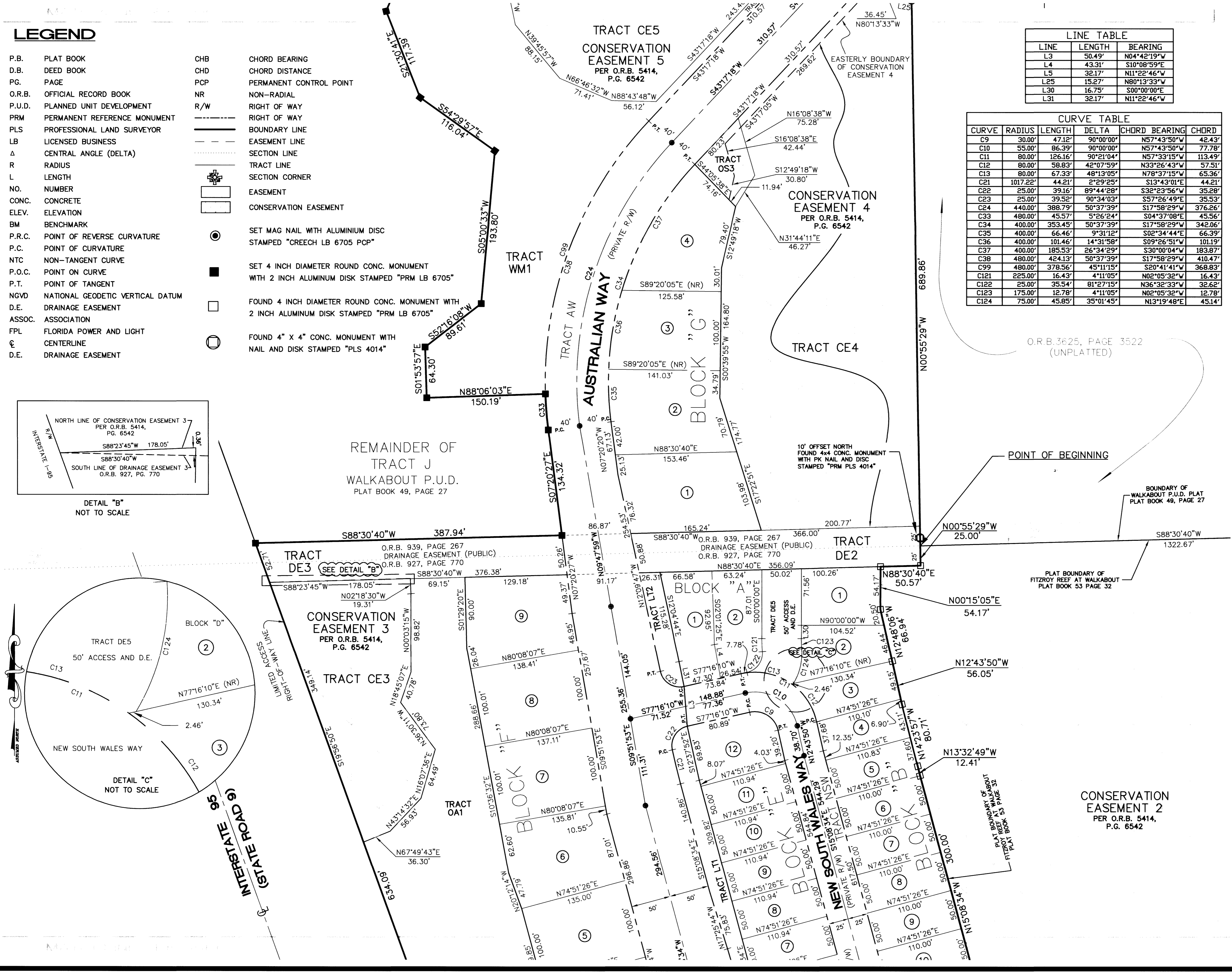
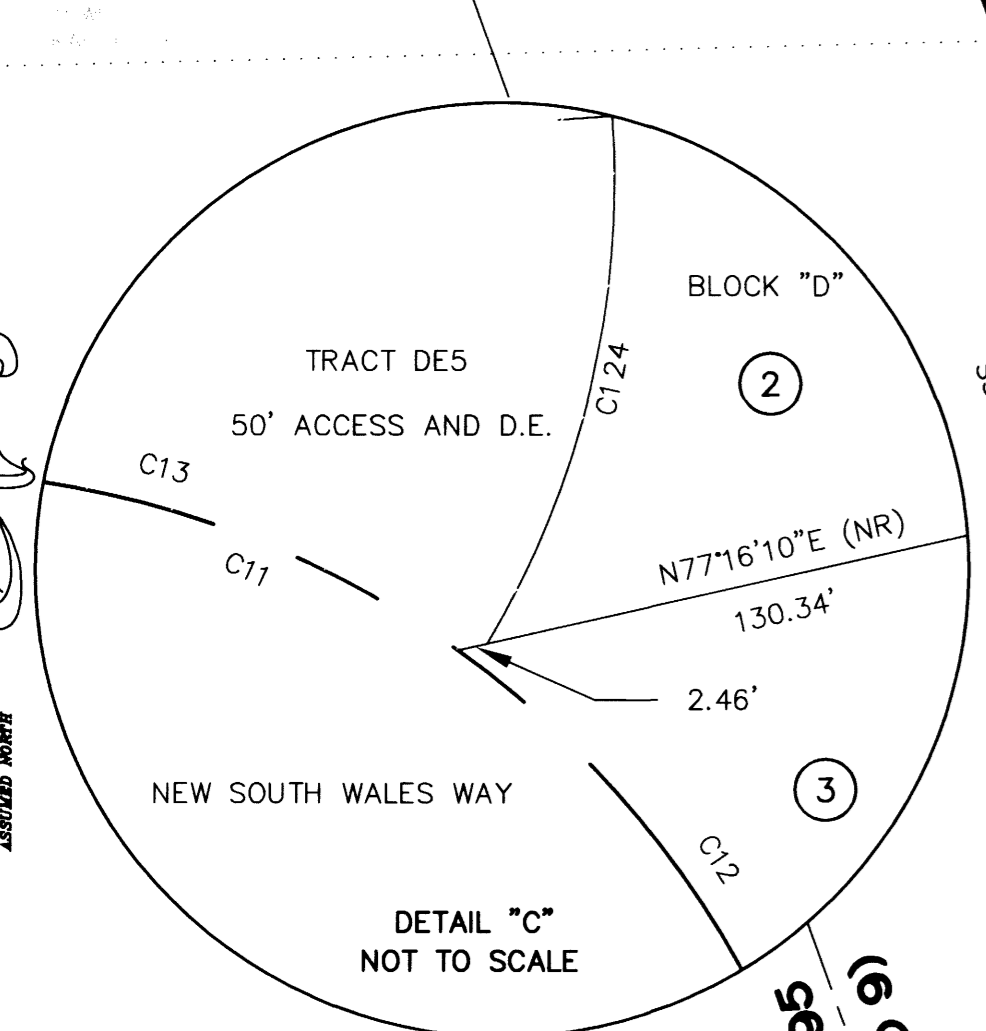
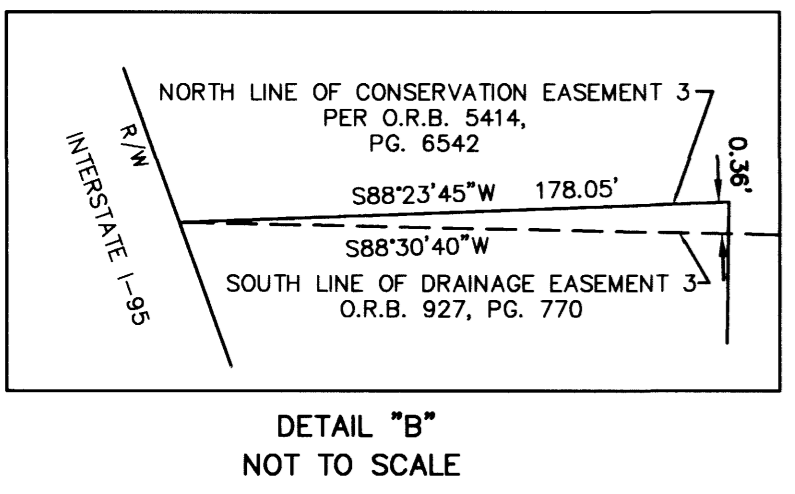
LINE	LENGTH	BEARING
L3	50.49'	N04°42'19"W
L4	43.31'	S10°08'59"E
L5	32.17'	N11°22'46"W
L25	15.27'	N80°13'33"W
L30	16.75'	S00°00'00"E
L31	32.17'	N11°22'46"W

CURVE	RADIUS	LENGTH	DELTA	CHORD BEARING	CHORD
C9	30.00'	47.12'	90°00'00"	N57°43'50"W	42.43'
C10	55.00'	86.39'	90°00'00"	N57°43'50"W	77.78'
C11	80.00'	126.16'	90°21'04"	N57°33'15"W	113.49'
C12	80.00'	58.83'	42°07'59"	N33°26'43"W	57.51'
C13	80.00'	67.33'	48°13'05"	N78°37'15"W	65.36'
C21	1017.22'	44.21'	2°29'25"	S13°43'01"E	44.21'
C22	25.00'	39.16'	89°44'28"	S32°23'56"W	35.28'
C23	25.00'	39.52'	90°34'03"	S57°26'49"E	35.53'
C24	440.00'	388.79'	50°37'39"	S17°58'29"W	376.26'
C33	480.00'	45.57'	5°26'24"	S04°37'08"E	45.56'
C34	400.00'	353.45'	50°37'39"	S17°58'29"W	342.06'
C35	400.00'	66.46'	9°31'12"	S02°34'44"E	66.39'
C36	400.00'	101.46'	14°31'58"	S09°26'51"W	101.19'
C37	400.00'	185.53'	26°34'29"	S30°00'04"W	183.87'
C38	480.00'	424.13'	50°37'39"	S17°58'29"W	410.47'
C39	480.00'	378.56'	45°11'15"	S20°41'41"W	368.83'
C121	225.00'	16.43'	4°11'05"	N02°05'32"W	16.43'
C122	25.00'	35.54'	81°27'15"	N36°32'33"W	32.62'
C123	175.00'	12.78'	4°11'05"	N02°05'32"W	12.78'
C124	75.00'	45.85'	35°01'45"	N13°19'48"E	45.14'

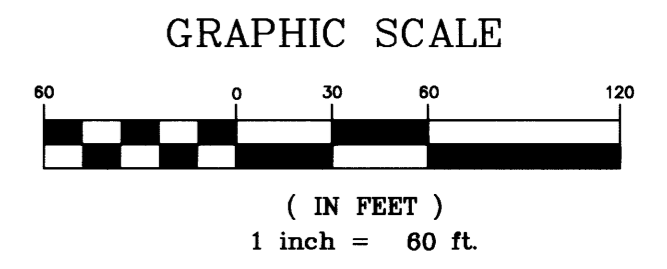


UNDERSIZED LOTS AND THEIR OVERSIZED PARTNER

UNDERSIZED LOTS	UNDERSIZED DISTANCES	OVERSIZED LOTS
BLOCK H, LOT 2	49.72'	BLOCK H LOT 15 ● 53.64'
BLOCK A, LOT 1	47.73'	BLOCK A, LOT 2 ● 57.10'



POINT OF COMMENCEMENT
FOUND 1/2" IRON PIPE
SOUTHEAST CORNER SECTION 12,
TOWNSHIP 21 S., RANGE 34 E.



CREECH ENGINEERS, INC.
CIVILIZATION ENGINEERED
4450 WEST EAU GALLIE BLVD., MELBOURNE, FL 32934 (321) 255-5434
2000 N.E. JENSEN BEACH BLVD., JENSEN BEACH, FLORIDA 34957 (772) 283-1413
707 EAST PARK AVENUE, TALLAHASSEE, FL 32301 (850) 841-1705
BOARD OF PROFESSIONAL ENGINEERS, CERTIFICATE OF AUTHORIZATION NUMBER 5139
PROFESSIONAL SURVEYORS AND MAPPERS, LICENSED CERTIFICATE NO. LB-0006705