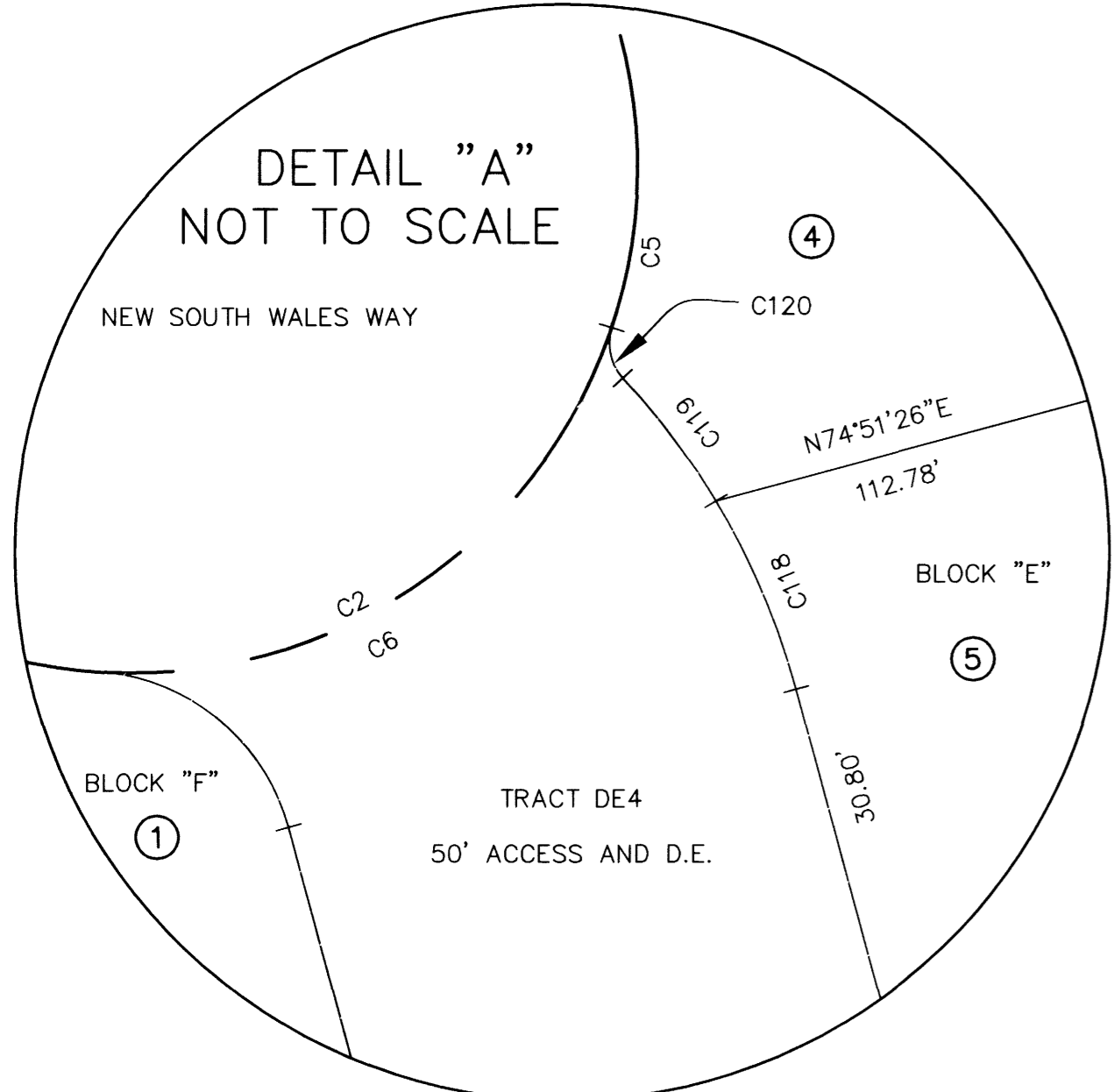
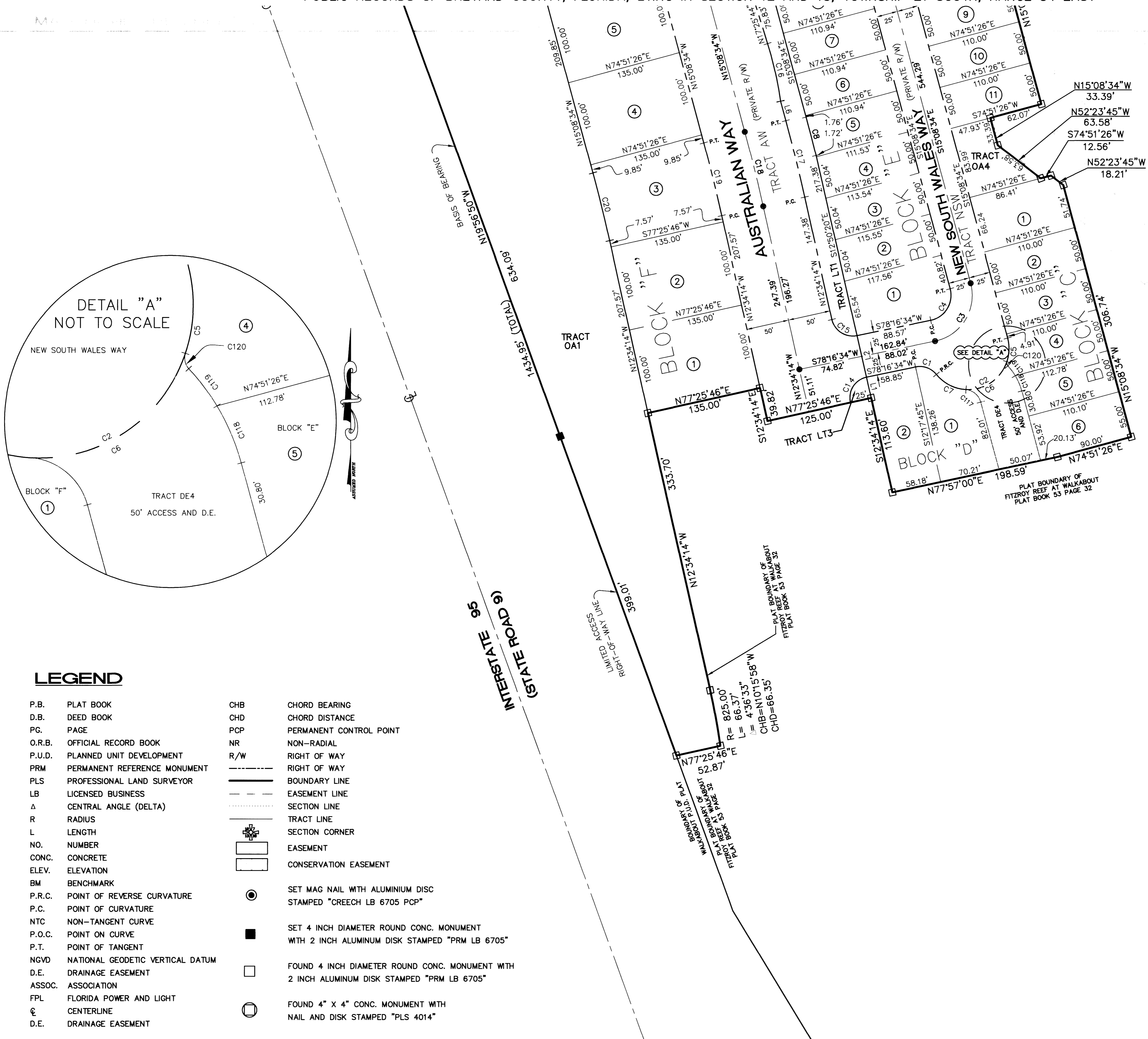


NEW SOUTH WALES AND LORRIKEET AT WALKABOUT

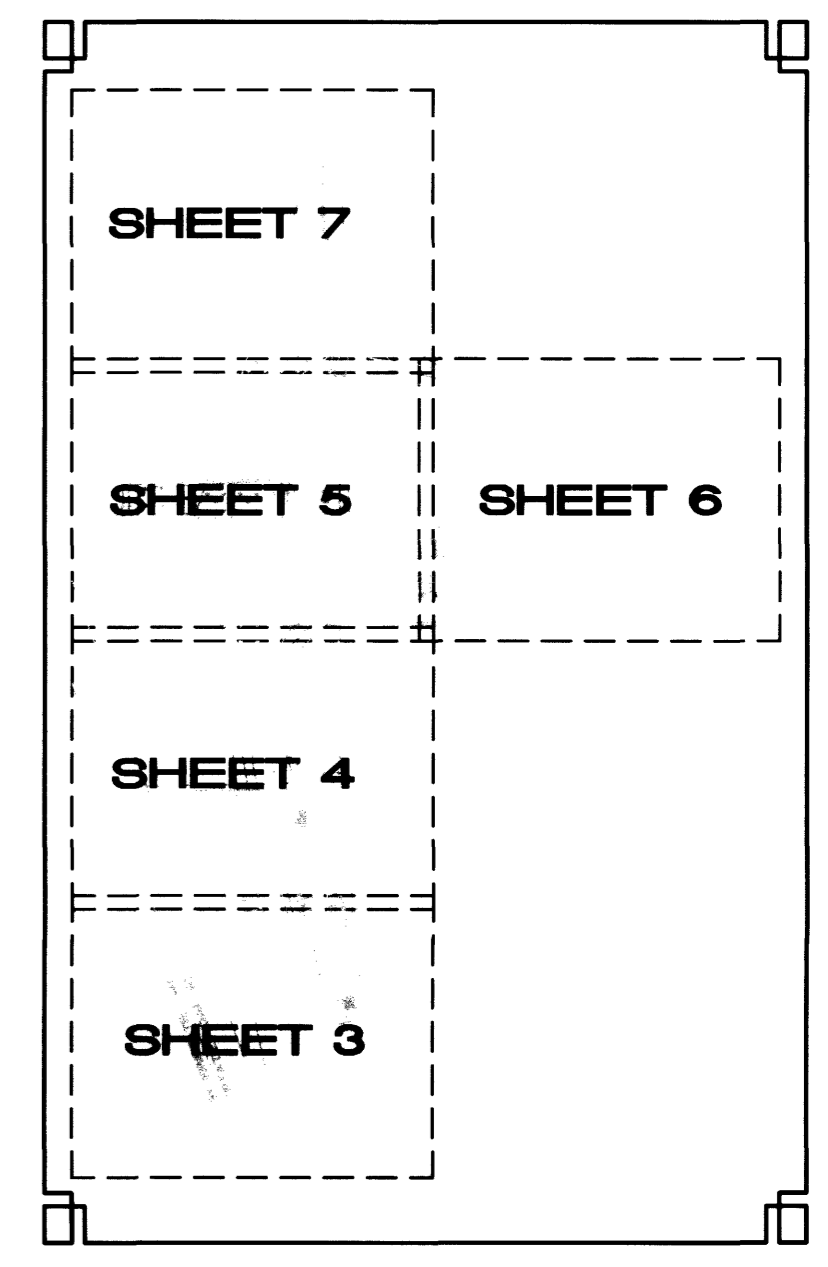
AUSTRALIAN WAY (PORTION OF POD 2 AND PODS 3, 5, 6 AND 7)

A REPLAT OF A PORTION OF TRACT A, F, G AND J WALKABOUT P.U.D. AS RECORDED IN PLAT BOOK 49, PAGE 27, OF THE PUBLIC RECORDS OF BREVARD COUNTY, FLORIDA, LYING IN SECTION 12 AND 13, TOWNSHIP 21 SOUTH, RANGE 34 EAST

PLAT BOOK 55 PAGE 20
SHEET 3 OF 8
SECTION 12 AND 13, TOWNSHIP 21 SOUTH, RANGE 34 EAST



CONSERVATION EASEMENT 2
PER O.R.B. 5414,
P.G. 6542

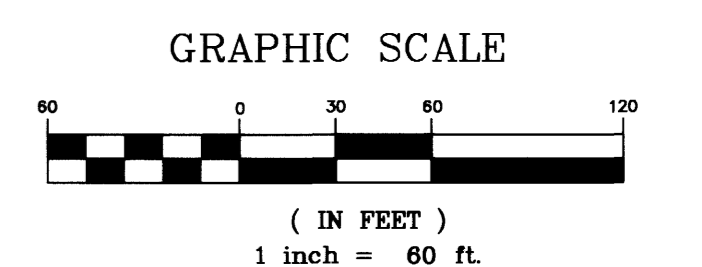


LINE TABLE		
LINE	LENGTH	BEARING
L1	25.00'	S12°34'14"E
L2	50.01'	S12°59'11"E
L6	23.70'	S15°08'34"E

CURVE TABLE					
CURVE	RADIUS	LENGTH	DELTA	CHORD BEARING	CHORD
C1	25.00'	27.43'	62°51'16"	N70°17'48"W	26.07'
C2	48.00'	130.92'	156°16'25"	N62°59'38"E	93.95'
C3	55.00'	89.68'	93°25'09"	N31°34'00"E	80.07'
C4	30.00'	48.91'	93°25'09"	N31°34'00"E	43.67'
C5	48.00'	28.19'	33°39'10"	N01°41'01"E	27.79'
C6	48.00'	62.34'	74°24'38"	N55°42'55"E	58.05'
C7	48.00'	40.39'	48°12'36"	S62°58'28"E	39.21'
C8	2085.00'	46.53'	1°16'43"	N14°29'46"W	46.52'
C14	25.00'	39.27'	90°00'00"	S32°29'23"W	35.36'
C15	25.00'	38.91'	89°10'06"	S57°09'18"E	35.10'
C16	415.00'	69.36'	9°34'34"	N12°38'27"W	69.28'
C17	2060.00'	92.48'	2°34'20"	N13°51'24"W	92.47'
C18	2010.00'	90.24'	2°34'20"	N13°51'24"W	90.23'
C19	1960.00'	87.99'	2°34'20"	N13°51'24"W	87.99'
C20	1825.00'	81.93'	2°34'20"	N13°51'24"W	81.93'
C117	20.00'	24.03'	68°50'39"	S49°34'17"E	22.61'
C118	70.00'	19.44'	15°54'48"	N23°06'21"W	19.38'
C119	70.00'	14.68'	12°01'02"	N37°04'16"W	14.66'
C120	5.00'	5.12'	58°38'38"	N12°39'21"W	4.90'

LEGEND

- | | | | |
|--------|----------------------------------|-----|--------------------------------------------------------------------------------------------|
| P.B. | PLAT BOOK | CHB | CHORD BEARING |
| D.B. | DEED BOOK | CHD | CHORD DISTANCE |
| PG. | PAGE | PCP | PERMANENT CONTROL POINT |
| O.R.B. | OFFICIAL RECORD BOOK | NR | NON-RADIAL |
| P.U.D. | PLANNED UNIT DEVELOPMENT | R/W | RIGHT OF WAY |
| PRM | PERMANENT REFERENCE MONUMENT | --- | RIGHT OF WAY |
| PLS | PROFESSIONAL LAND SURVEYOR | --- | BOUNDARY LINE |
| LB | LICENSED BUSINESS | --- | EASEMENT LINE |
| Δ | CENTRAL ANGLE (DELTA) | --- | SECTION LINE |
| R | RADIUS | --- | TRACT LINE |
| L | LENGTH | + | SECTION CORNER |
| NO. | NUMBER | □ | EASEMENT |
| CONC. | CONCRETE | □ | CONSERVATION EASEMENT |
| ELEV. | ELEVATION | ⊙ | SET MAG NAIL WITH ALUMINIUM DISC STAMPED "CREECH LB 6705 PCP" |
| BM | BENCHMARK | ■ | SET 4 INCH DIAMETER ROUND CONC. MONUMENT WITH 2 INCH ALUMINUM DISK STAMPED "PRM LB 6705" |
| P.R.C. | POINT OF REVERSE CURVATURE | □ | FOUND 4 INCH DIAMETER ROUND CONC. MONUMENT WITH 2 INCH ALUMINUM DISK STAMPED "PRM LB 6705" |
| P.C. | POINT OF CURVATURE | ⊙ | FOUND 4" X 4" CONC. MONUMENT WITH NAIL AND DISK STAMPED "PLS 4014" |
| NTC | NON-TANGENT CURVE | | |
| P.O.C. | POINT ON CURVE | | |
| P.T. | POINT OF TANGENT | | |
| NGVD | NATIONAL GEODETIC VERTICAL DATUM | | |
| D.E. | DRAINAGE EASEMENT | | |
| ASSOC. | ASSOCIATION | | |
| FPL | FLORIDA POWER AND LIGHT | | |
| ⊕ | CENTERLINE | | |
| D.E. | DRAINAGE EASEMENT | | |



CREECH ENGINEERS, INC.
CIVILIZATION ENGINEERED
4450 WEST EAU GALLIE BLVD., MELBOURNE, FL 32934 (321) 255-5434
2000 N.E. JENSEN BEACH BLVD., JENSEN BEACH, FLORIDA 34957 (772) 283-1413
707 EAST PARK AVENUE, TALLAHASSEE, FL 32301 (850) 841-1705
BOARD OF PROFESSIONAL ENGINEERS, CERTIFICATE OF AUTHORIZATION NUMBER 5139
PROFESSIONAL SURVEYORS AND MAPPERS, AMENDED CERTIFICATE NO. LB-0006705
CEI JOB NO. 22050.35