

MANCHESTER LAKES PHASE ONE

A REPLAT OF LOTS 4-12.

FLORIDA INDIAN RIVER LAND COMPANY, PLAT BOOK 1, PAGE 164
SECTION 17, TOWNSHIP 28 SOUTH, RANGE 37 EAST
CITY OF WEST MELBOURNE, COUNTY OF BREVARD, FLORIDA.

PREPARED BY:
WILLIAM MOTT LAND SURVEYING INC.

3716 NORTH WICKHAM ROAD, SUITE 3
MELBOURNE, FLORIDA 32935-2338
PHONE (321) 751-4444 FAX (321) 751-4445
PROJECT NUMBER: 204-0028
DRAWING NAME: MANCHESTER LAKES PHASE ONE.DWG
DRAWN BY: DANIEL D. GARNER P.S.M. 6189

NOTICE: THIS PLAT, AS RECORDED IN ITS GRAPHIC FORM, IS THE OFFICIAL DEPICTION OF THE SUBDIVIDED LANDS DESCRIBED HEREIN AND WILL IN NO CIRCUMSTANCES BE SUPPLANTED IN AUTHORITY BY ANY OTHER GRAPHIC OR DIGITAL FORM OF THE PLAT. THERE MAY BE ADDITIONAL RESTRICTIONS THAT ARE NOT RECORDED ON THIS PLAT THAT MAY BE FOUND IN THE PUBLIC RECORDS OF THIS COUNTY.

NOTE:
PRIOR TO THE RELEASE OF THE PERFORMANCE BOND, ALL LOT CORNER MONUMENTATION WILL BE SET AS 1/2" IRON RODS WITH CAPS MARKED "LB 3608".

SEE SHEET 6
MATCH LINE

R=1280.00'
Δ=6°38'15"
L=148.28'
CH=148.20'
CB=N02°30'11"W

R=1220.00'
Δ=6°57'56"
L=148.31'
CH=148.22'
CB=N02°40'01"W

R=1220.00'
Δ=6°57'56"
L=148.31'
CH=148.22'
CB=N02°40'01"W

R=1220.00'
Δ=6°57'56"
L=148.31'
CH=148.22'
CB=N02°40'01"W

R=1220.00'
Δ=6°57'56"
L=148.31'
CH=148.22'
CB=N02°40'01"W

R=1220.00'
Δ=6°57'56"
L=148.31'
CH=148.22'
CB=N02°40'01"W

R=1220.00'
Δ=6°57'56"
L=148.31'
CH=148.22'
CB=N02°40'01"W

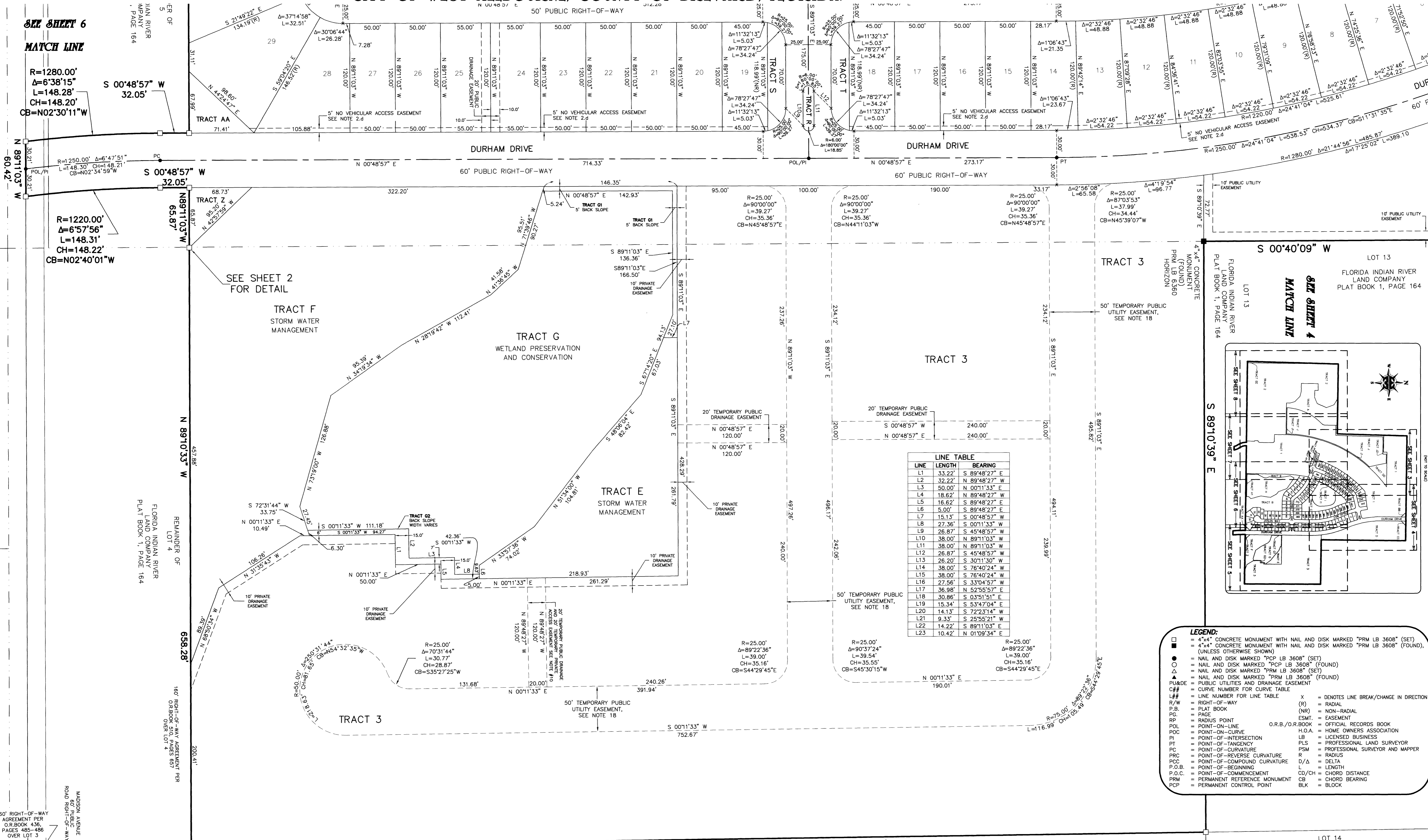
R=1220.00'
Δ=6°57'56"
L=148.31'
CH=148.22'
CB=N02°40'01"W

R=1220.00'
Δ=6°57'56"
L=148.31'
CH=148.22'
CB=N02°40'01"W

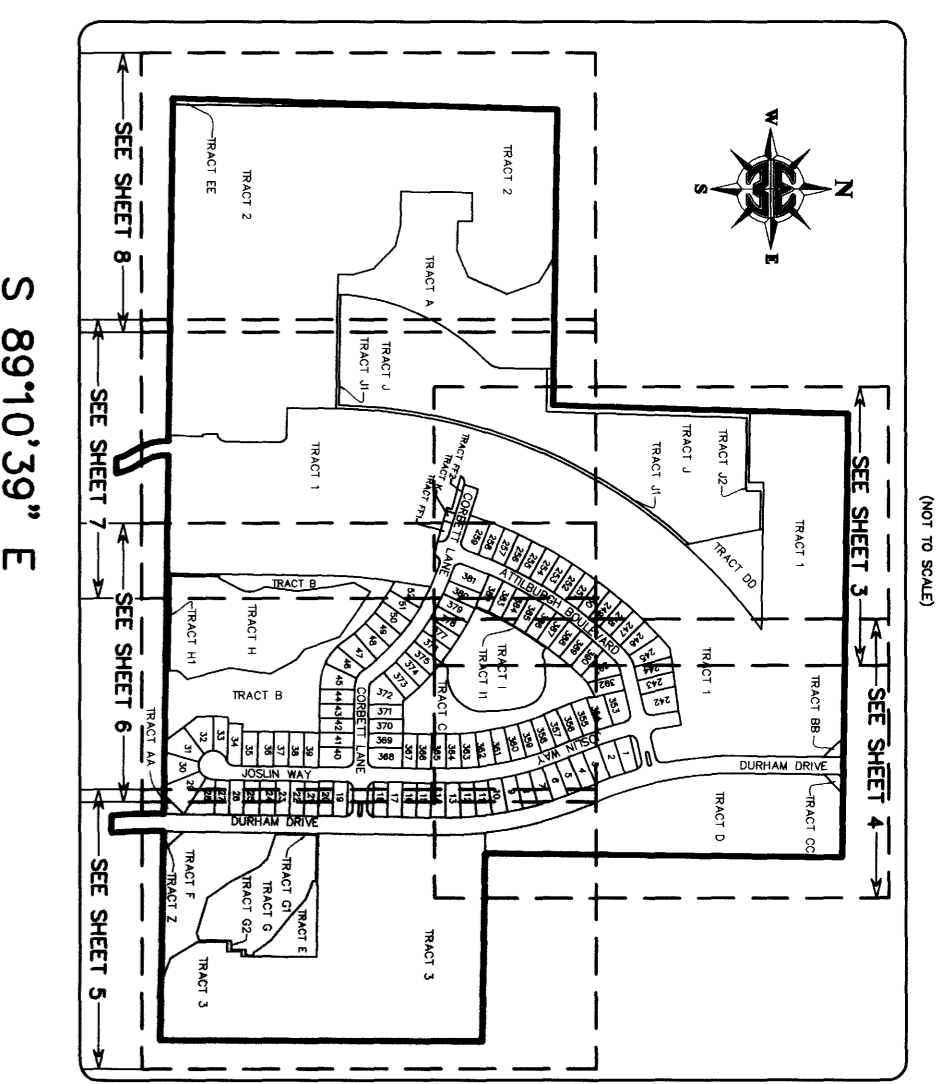
R=1220.00'
Δ=6°57'56"
L=148.31'
CH=148.22'
CB=N02°40'01"W

R=1220.00'
Δ=6°57'56"
L=148.31'
CH=148.22'
CB=N02°40'01"W

R=1220.00'
Δ=6°57'56"
L=148.31'
CH=148.22'
CB=N02°40'01"W



LINE	LENGTH	BEARING
L1	33.22'	S 89°48'27" E
L2	32.22'	N 89°48'27" W
L3	50.00'	N 00°11'33" E
L4	18.62'	S 89°48'27" W
L5	16.62'	S 89°48'27" E
L6	5.00'	S 89°48'27" E
L7	15.13'	S 00°48'57" W
L8	27.36'	S 00°11'33" W
L9	26.87'	S 45°48'57" W
L10	38.00'	N 89°11'03" W
L11	38.00'	N 89°11'03" W
L12	26.87'	S 45°48'57" W
L13	26.20'	S 00°11'30" W
L14	38.00'	S 76°40'24" W
L15	38.00'	S 76°40'24" W
L16	27.56'	S 33°04'57" W
L17	36.98'	N 52°55'57" E
L18	30.86'	S 03°51'51" E
L19	15.34'	S 53°47'04" E
L20	14.13'	S 72°23'14" W
L21	9.33'	S 25°55'21" W
L22	14.22'	S 89°11'03" E
L23	10.42'	N 01°09'34" E



- LEGEND:**
- = 4"x4" CONCRETE MONUMENT WITH NAIL AND DISK MARKED "PRM LB 3608" (SET)
 - = 4"x4" CONCRETE MONUMENT WITH NAIL AND DISK MARKED "PRM LB 3608" (FOUND), (UNLESS OTHERWISE SHOWN)
 - = NAIL AND DISK MARKED "PCP LB 3608" (SET)
 - = NAIL AND DISK MARKED "PCP LB 3608" (FOUND)
 - ▲ = NAIL AND DISK MARKED "PRM LB 3608" (SET)
 - △ = NAIL AND DISK MARKED "PRM LB 3608" (FOUND)
 - PUB&E = PUBLIC UTILITIES AND DRAINAGE EASEMENT
 - C# = CURVE NUMBER FOR CURVE TABLE
 - L# = LINE NUMBER FOR LINE TABLE
 - R/W = RIGHT-OF-WAY
 - P.B. = PLAT BOOK
 - PG. = PAGE
 - RP = RADIUS POINT
 - POL = POINT-ON-LINE
 - POC = POINT-ON-CURVE
 - PI = POINT-OF-INTERSECTION
 - PT = POINT-OF-TANGENCY
 - PC = POINT-OF-CURVATURE
 - PRC = POINT-OF-REVERSE CURVATURE
 - PCC = POINT-OF-COMPOUND CURVATURE
 - P.O.B. = POINT-OF-BEGINNING
 - P.O.C. = POINT-OF-COMMENCEMENT
 - PRM = PERMANENT REFERENCE MONUMENT
 - PCP = PERMANENT CONTROL POINT
 - X = DENOTES LINE BREAK/CHANGE IN DIRECTION
 - (R) = RADIAL
 - (NR) = NON-RADIAL
 - ESMT. = EASEMENT
 - H.O.A. = HOME OWNERS ASSOCIATION
 - LB = LICENSED BUSINESS
 - PLS = PROFESSIONAL LAND SURVEYOR
 - PSM = PROFESSIONAL SURVEYOR AND MAPPER
 - R = RADIUS
 - D/Δ = DELTA
 - L = LENGTH
 - CD/CH = CHORD DISTANCE
 - CB = CHORD BEARING
 - BLK = BLOCK

160' RIGHT-OF-WAY AGREEMENT PER O.R.BOOK 436, PAGES 485-486 OVER LOT 3

MADISON AVENUE ROAD RIGHT-OF-WAY

S 00°11'33" W LOT 3 1117.44'

FLORIDA INDIAN RIVER LAND COMPANY PLAT BOOK 1, PAGE 164

LOT 14 FLORIDA INDIAN RIVER LAND COMPANY PLAT BOOK 1, PAGE 164