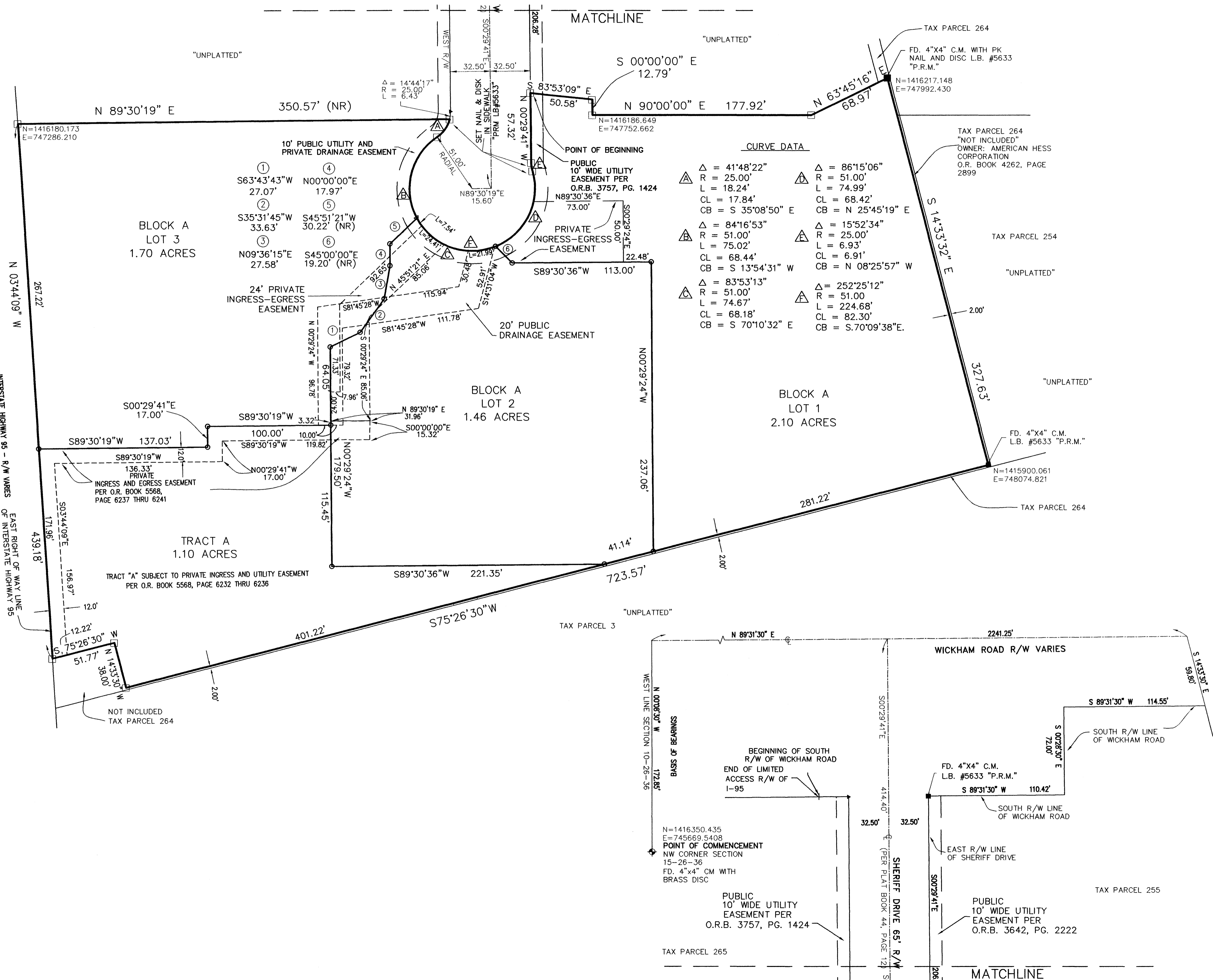


SHERIFF PLAZA

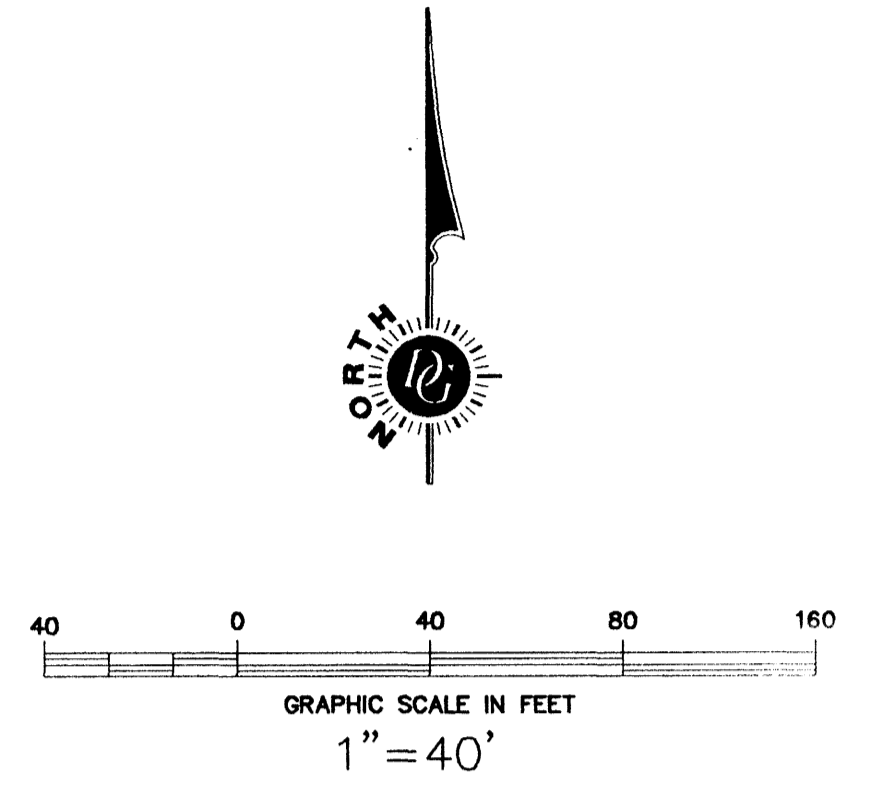
A REPLAT OF ALL OF TRACTS A, B, C, AND D OF S. & S. DEVELOPMENT SUBDIVISION AS RECORDED IN PLAT BOOK 44, PAGE 12 TOGETHER WITH A PORTION OF OFFICIAL RECORDS BOOK 892, PAGE 518 OF THE PUBLIC RECORDS
SECTION 15, TOWNSHIP 26 SOUTH, RANGE 36 EAST, BREVARD COUNTY, FLORIDA

PLAT BOOK 55 PAGE 3
SHEET 2 OF 2
SECTION 15 TWP. 26 S., RANGE 36 E.



CURVE DATA

Δ = 41'48"22"	Δ = 86'15"06"
R = 25.00'	R = 51.00'
L = 18.24'	L = 74.99'
CL = 17.84'	CL = 68.42'
CB = S 35°08'50" E	CB = N 25°45'19" E
Δ = 84'16"53"	Δ = 15°52'34"
R = 51.00'	R = 25.00'
L = 75.02'	L = 6.93'
CL = 68.44'	CL = 6.91'
CB = S 13°54'31" W	CB = N 08°25'57" W
Δ = 83°53'13"	Δ = 252°25'12"
R = 51.00'	R = 51.00'
L = 74.67'	L = 224.68'
CL = 68.18'	CL = 82.30'
CB = S 70°10'32" E	CB = S.70°09'38"E.



LEGEND

FDOT	FLORIDA DEPARTMENT OF TRANSPORTATION
L	LENGTH
R	RADIUS
Δ	DELTA
CL	CHORD LENGTH
CB	CHORD BEARING
(NR)	NOT RADIAL
FD	FOUND
CM	CONCRETE MONUMENT
PRM	PERMANENT REFERENCE MONUMENT
PCP	PERMANENT CONTROL POINT
PUE	PUBLIC UTILITY EASEMENT
○	1/2' REBAR & CAP SET, LB #5633
▽	N/D SET, LB #5633 "PCP"
□	4x4 CONCRETE MONUMENT SET, WITH PK NAIL AND DISK LB #5633 "PRM"

NOTICE: THIS PLAT, AS RECORDED IN ITS GRAPHIC FORM, IS THE OFFICIAL DEPICTION OF THE SUBDIVIDED LAND DESCRIBED HEREIN AND WILL IN NO CIRCUMSTANCES BE SUPPLANTED IN AUTHORITY BY ANY OTHER GRAPHIC OR DIGITAL FORM OF THE PLAT. THERE MAY BE ADDITIONAL RESTRICTIONS THAT ARE NOT RECORDED ON THIS PLAT THAT MAY BE FOUND IN THE PUBLIC RECORDS OF THIS COUNTY.

ISLAND SURVEYING & MAPPING CO.
CERTIFICATE OF AUTHORIZATION NO. L.B. 5633
A DONALDSON, GARRETT & ASSOCIATES, INC. COMPANY

2460 N. COURTENAY PKWY. #212, MERRITT ISLAND, FL. 32953
TELEPHONE: (321) 452-1738 FAX: (321) 452-7256

SCALE: 1" = 40' JOB. NO.: 03-467-11