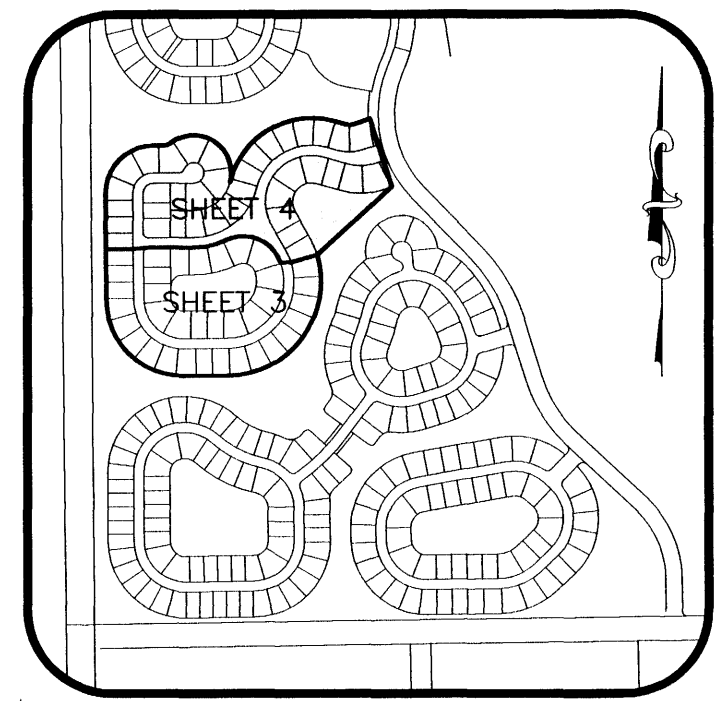


# GATWICK MANOR SUBDIVISION

## A PORTION OF SECTION 5, TOWNSHIP 26 SOUTH, RANGE 36 EAST BREVARD COUNTY, FLORIDA



KEY MAP  
N.T.S.



**LEGEND**

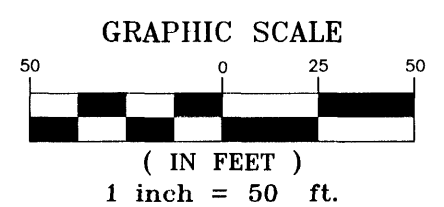
- SECTION CORNER FOUND (MARKED AS NOTED)
- PERMANENT CONTROL POINT SET (METAL MARKER WITH A METAL DISK STAMPED "PCP-LB 4905")
- PERMANENT REFERENCE MONUMENT SET (4"x4" CONCRETE MARKER WITH METAL DISK STAMPED "PRM LB 4905")
- PERMANENT REFERENCE MONUMENT FOUND (4"x4" CONCRETE MARKER WITH METAL DISK STAMPED "PRM LB 4905")
- CONCRETE MONUMENT SET (4"x4" CONCRETE MARKER STAMPED "LB 4905")
- CONCRETE MONUMENT FOUND (4"x4" CONCRETE MARKER STAMPED "LB 4905")
- 1/2" IRON ROD & CAP SET (STAMPED "LB 4905")
- 1/2" IRON ROD & CAP FOUND (STAMPED "LB 4905")

**ABBREVIATION**

- L = LEFT
- R = RIGHT
- N = NORTH
- S = SOUTH
- E = EAST
- W = WEST
- R/W = RIGHT-OF-WAY
- O.R.B. = OFFICIAL RECORD BOOK
- P.O.C. = POINT OF COMMENCEMENT
- P.O.B. = POINT OF BEGINNING
- C# = CURVE TABLE LABEL
- L# = LINE TABLE LABEL
- AL = ARC LENGTH OF CURVE
- R = RADIUS OF CURVE
- Del = CENTRAL ANGLE OF CURVE
- W.E. = WALL EASEMENT
- FP&L = FLORIDA POWER AND LIGHT
- Ch = CHORD LENGTH OF CURVE
- CB = CHORD BEARING OF CURVE
- RB = RADIAL BEARING
- (NR) = NON RADIAL LINE
- PC = POINT OF CURVATURE
- PT = POINT OF TANGENCY
- PRC = POINT OF REVERSE CURVE
- COC = CUSP OF CURVE
- I.P. = IRON PIPE
- C.M. = CONCRETE MONUMENT
- P.A.E. = PRIVATE ACCESS EASEMENT
- D.E. = DRAINAGE EASEMENT
- P.U.&D.E. = PUBLIC UTILITY & DRAINAGE EASEMENT
- W.&M.E. = WALL & MAINTENANCE EASEMENT
- PCC = POINT OF COMPOUND CURVE

**TRACT AREA SUMMARY**

TRACT ID	AREA (ACRES)	USE OF TRACT	OWNERSHIP & MAINTENANCE ENTITY
A	0.15	SIGNAGE, SIDEWALKS, LANDSCAPE, AND OPEN SPACE	TAVISTOCK DISTRICT ASSOCIATION, INC IT'S SUCCESSOR AND/OR ASSIGNS
B	0.15	SIGNAGE, SIDEWALKS, LANDSCAPE AND OPEN SPACE	TAVISTOCK DISTRICT ASSOCIATION, INC IT'S SUCCESSOR AND/OR ASSIGNS
C	11.91	STORMWATER	TAVISTOCK DISTRICT ASSOCIATION, INC IT'S SUCCESSOR AND/OR ASSIGNS
D	0.47	LANDSCAPE, IRRIGATION, FENCING, WALLS, UTILITIES, DRAINAGE; SEE NOTE #19	TAVISTOCK DISTRICT ASSOCIATION, INC IT'S SUCCESSOR AND/OR ASSIGNS
E	5.38	FUTURE DEVELOPMENT PURPOSES; SEE NOTE #18	THE VIERA COMPANY IT'S SUCCESSOR AND/OR ASSIGNS
F	1.71	STORMWATER	TAVISTOCK DISTRICT ASSOCIATION, INC IT'S SUCCESSOR AND/OR ASSIGNS
ZZ	4.68	VEHICULAR AND PEDESTRIAN ACCESS, UTILITIES, DRAINAGE, AND SIDEWALKS	TAVISTOCK DISTRICT ASSOCIATION, INC IT'S SUCCESSOR AND/OR ASSIGNS



NOTICE: THIS PLAT, AS RECORDED IN ITS GRAPHIC FORM, IS THE OFFICIAL DEPICTION OF THE SUBDIVIDED LANDS DESCRIBED HEREIN AND WILL IN NO CIRCUMSTANCES BE SUPPLANTED IN AUTHORITY BY ANY OTHER GRAPHIC OR DIGITAL FORM OF THE PLAT. THERE MAY BE ADDITIONAL RESTRICTIONS THAT ARE NOT RECORDED ON THIS PLAT THAT MAY BE FOUND IN THE PUBLIC RECORDS OF THIS COUNTY.

THIS PLAT PREPARED BY  
LESLIE E. HOWARD PROFESSIONAL SURVEYOR AND MAPPER  
FLORIDA LICENSE NO. 5611  
B.S.E. CONSULTANTS, INC. LB No. 4905

**B.S.E. CONSULTANTS, INC.**  
CONSULTING - ENGINEERING - LAND SURVEYING  
312 SOUTH HARBOR CITY BOULEVARD, SUITE 4  
MELBOURNE, FLORIDA PHONE: (321) 725-3674 FAX: (321) 723-1159  
CERTIFICATE OF BUSINESS AUTHORIZATION: 9905  
CERTIFICATE OF LAND SURVEYING BUSINESS AUTHORIZATION: 480004905

DATE: 2/20/06  
DWG: 10802308