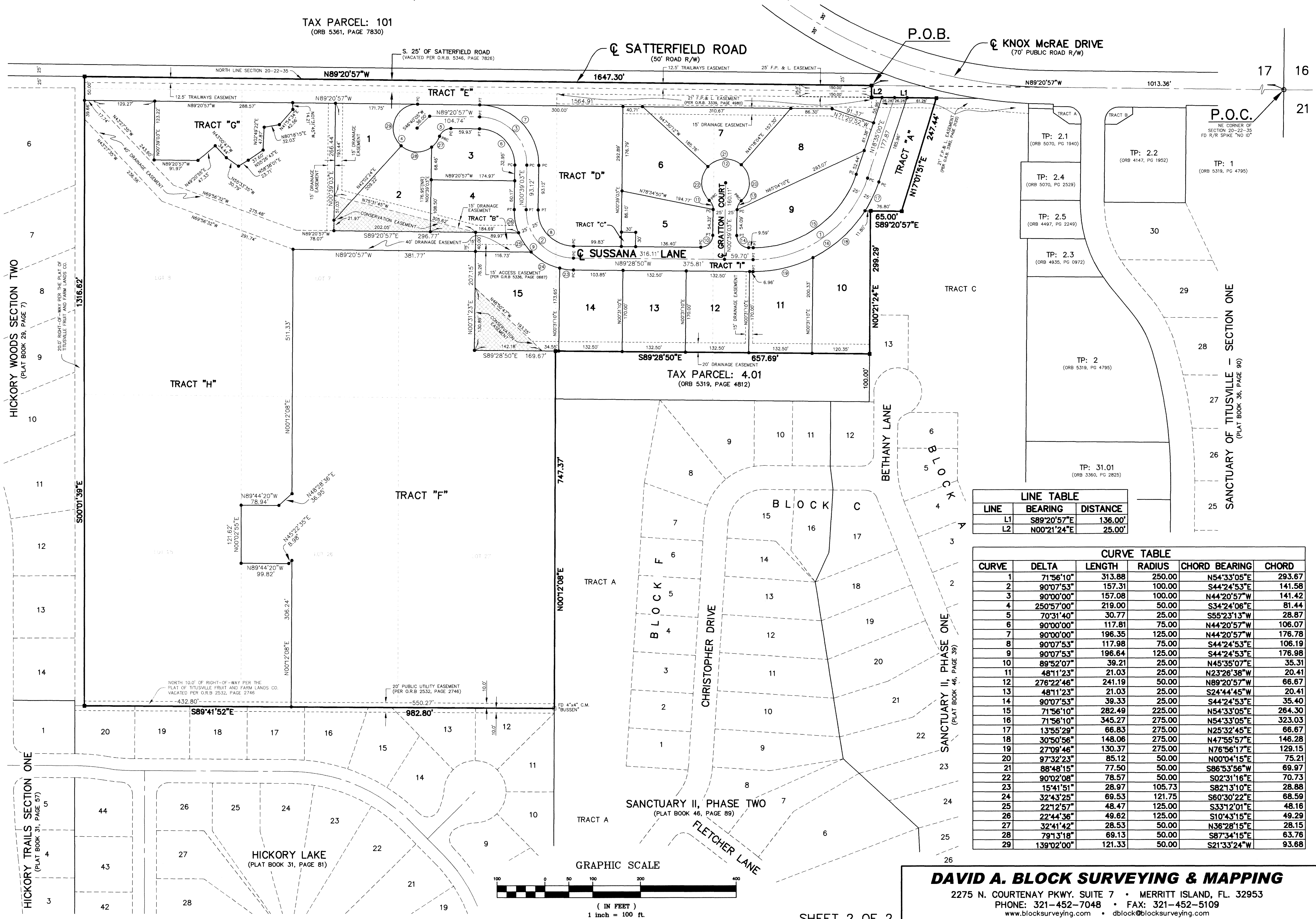


HIDDEN OAKS OF TITUSVILLE

CITY OF TITUSVILLE, BREVARD COUNTY, FLORIDA

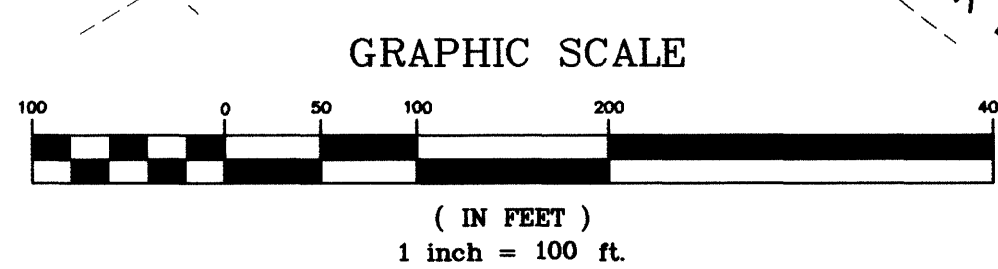
A RESUBDIVISION OF LOTS 6, 7, 8, 25, 26 AND 27 TOGETHER WITH A PORTION OF LOTS 3, 4 AND 5 AND ALSO TOGETHER WITH A PORTION OF VACATED RIGHT-OF-WAYS IN SECTION 20, TOWNSHIP 22 SOUTH, RANGE 35 EAST AS SHOWN ON THE PLAT OF TITUSVILLE FRUIT AND FARM LANDS CO. AS RECORDED IN PLAT BOOK 2, PAGE 29 OF THE PUBLIC RECORDS OF BREVARD COUNTY, FLORIDA.

TAX PARCEL: 101
(ORB 5361, PAGE 7830)



LINE	BEARING	DISTANCE
L1	S89°20'57"E	136.00'
L2	N00°21'24"E	25.00'

CURVE	DELTA	LENGTH	RADIUS	CHORD BEARING	CHORD
1	71°56'10"	313.88	250.00	N54°33'05"E	293.67
2	90°07'53"	157.31	100.00	S44°24'53"E	141.58
3	90°00'00"	157.08	100.00	N44°20'57"W	141.42
4	250°57'00"	219.00	50.00	S34°24'06"E	81.44
5	70°31'40"	30.77	25.00	S55°23'13"W	28.87
6	90°00'00"	117.81	75.00	N44°20'57"W	106.07
7	90°00'00"	196.35	125.00	N44°20'57"W	176.78
8	90°07'53"	117.98	75.00	S44°24'53"E	106.19
9	90°07'53"	196.64	125.00	S44°24'53"E	176.98
10	89°52'07"	39.21	25.00	N45°35'07"E	35.31
11	48°11'23"	21.03	25.00	N23°26'38"W	20.41
12	276°22'46"	241.19	50.00	N89°20'57"W	66.67
13	48°11'23"	21.03	25.00	S24°44'45"W	20.41
14	90°07'53"	39.33	25.00	S44°24'53"E	35.40
15	71°56'10"	282.49	225.00	N54°33'05"E	264.30
16	71°56'10"	345.27	275.00	N54°33'05"E	323.03
17	13°55'29"	66.83	275.00	N25°32'45"E	66.67
18	30°50'56"	148.06	275.00	N47°55'57"E	146.28
19	27°09'46"	130.37	275.00	N76°56'17"E	129.15
20	97°32'23"	85.12	50.00	N00°04'15"E	75.21
21	88°48'15"	77.50	50.00	S86°53'56"W	69.97
22	90°02'08"	78.57	50.00	S02°31'16"E	70.73
23	15°41'51"	28.97	105.73	S82°13'10"E	28.88
24	32°43'25"	69.53	121.75	S60°30'22"E	68.59
25	22°12'57"	48.47	125.00	S33°12'01"E	48.16
26	22°44'36"	49.62	125.00	S10°43'15"E	49.29
27	32°41'42"	28.53	50.00	N36°28'15"E	28.15
28	79°13'18"	69.13	50.00	S87°34'15"E	63.76
29	139°02'00"	121.33	50.00	S21°33'24"W	93.88



DAVID A. BLOCK SURVEYING & MAPPING
 2275 N. COURTENAY PKWY, SUITE 7 • MERRITT ISLAND, FL. 32953
 PHONE: 321-452-7048 • FAX: 321-452-5109
 www.blocksurveying.com • dblock@blocksurveying.com
 Certificate of Authorization No. LB 7294