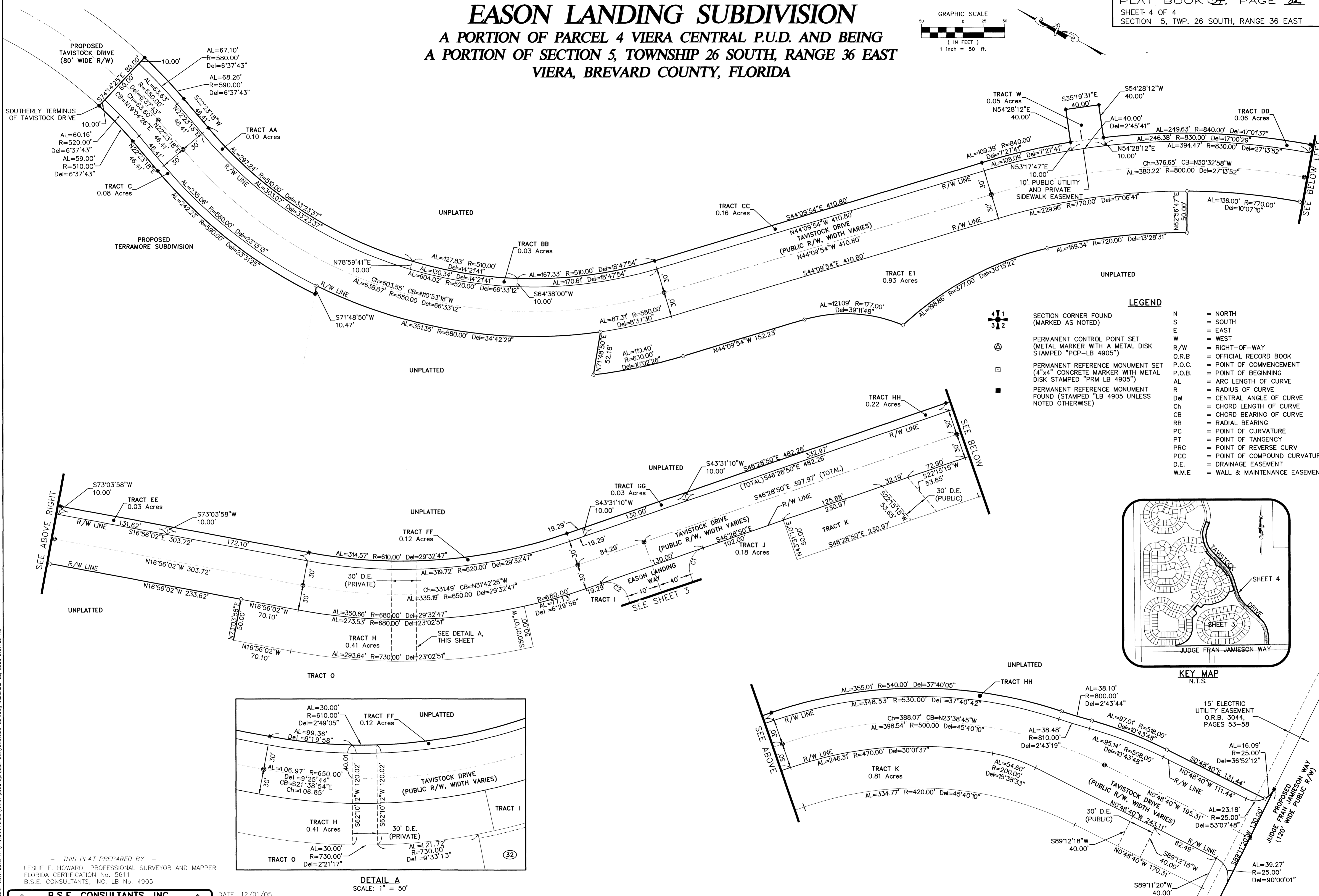
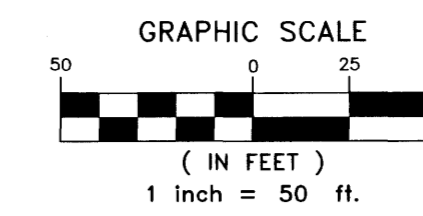


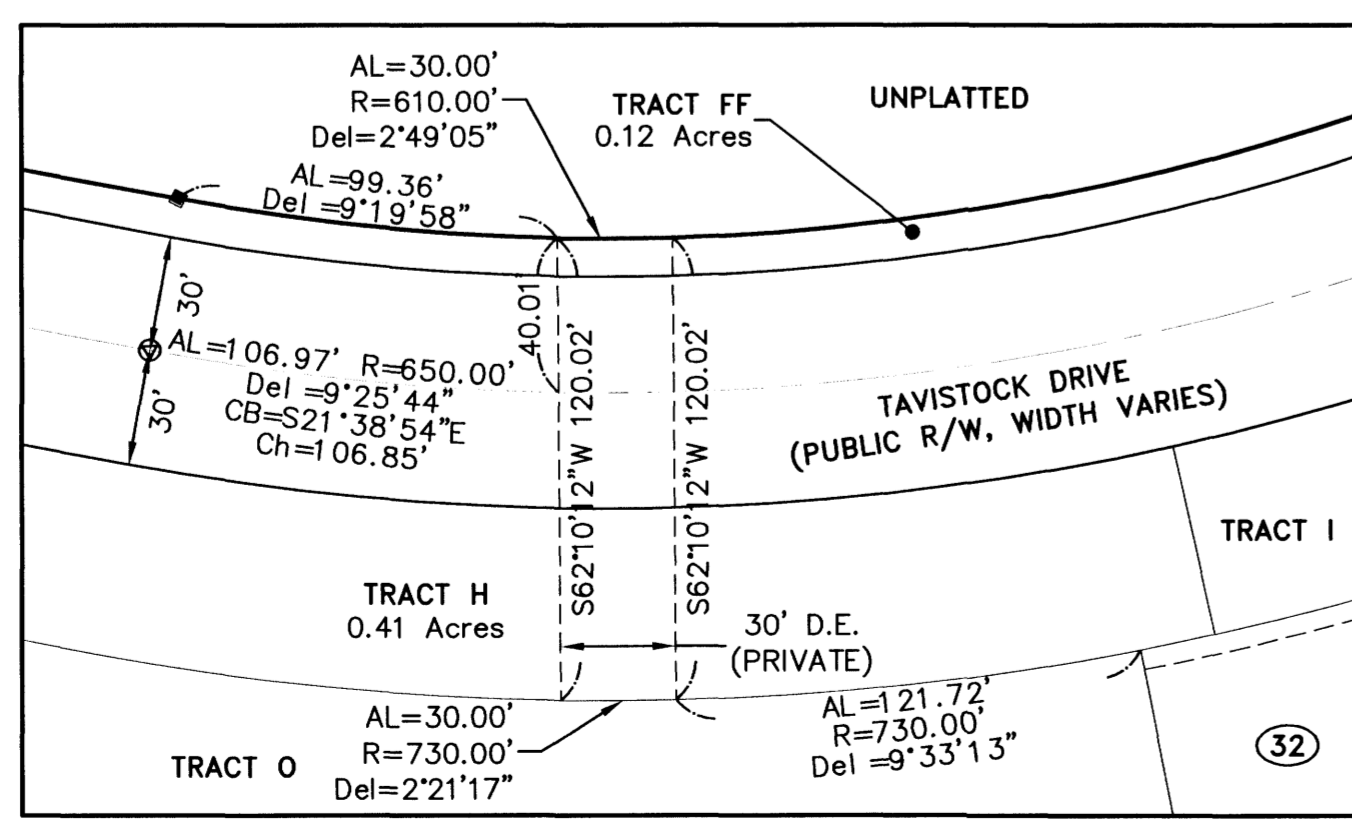
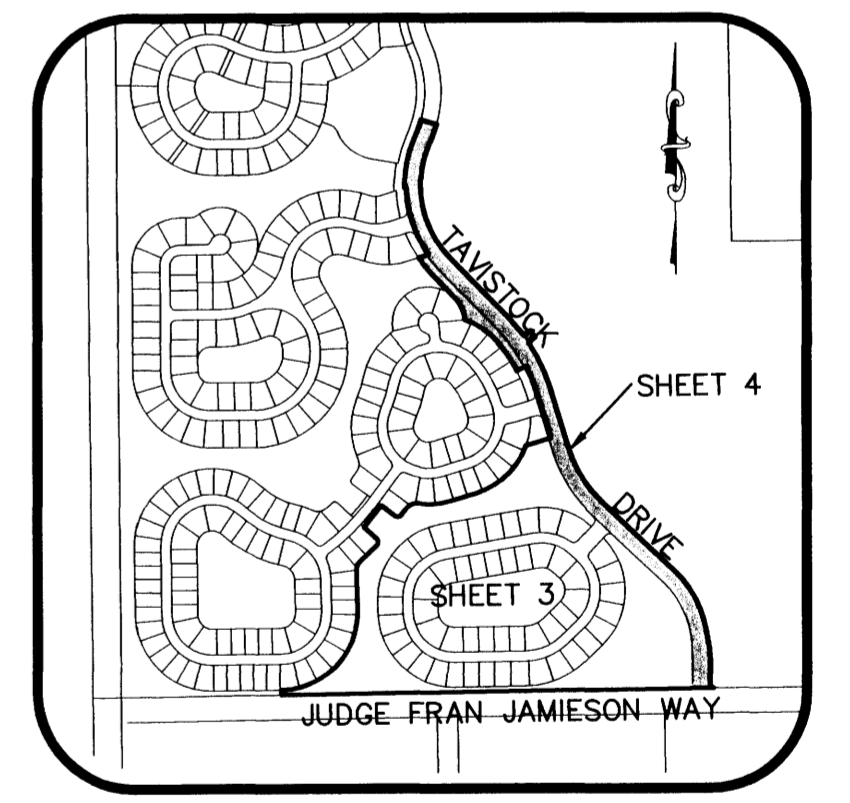
EASON LANDING SUBDIVISION

A PORTION OF PARCEL 4 VIERA CENTRAL P.U.D. AND BEING A PORTION OF SECTION 5, TOWNSHIP 26 SOUTH, RANGE 36 EAST VIERA, BREVARD COUNTY, FLORIDA



LEGEND

	SECTION CORNER FOUND (MARKED AS NOTED)	N	= NORTH
	PERMANENT CONTROL POINT SET (METAL MARKER WITH A METAL DISK STAMPED "PCP-LB 4905")	S	= SOUTH
	PERMANENT REFERENCE MONUMENT SET (4"x4" CONCRETE MARKER WITH METAL DISK STAMPED "PRM LB 4905")	E	= EAST
	PERMANENT REFERENCE MONUMENT FOUND (STAMPED "LB 4905 UNLESS NOTED OTHERWISE")	W	= WEST
		R/W	= RIGHT-OF-WAY
		O.R.B.	= OFFICIAL RECORD BOOK
		P.O.C.	= POINT OF COMMENCEMENT
		P.O.B.	= POINT OF BEGINNING
		AL	= ARC LENGTH OF CURVE
		R	= RADIUS OF CURVE
		Del	= CENTRAL ANGLE OF CURVE
		Ch	= CHORD LENGTH OF CURVE
		CB	= CHORD BEARING OF CURVE
		RB	= RADIAL BEARING
		PC	= POINT OF CURVATURE
		PT	= POINT OF TANGENCY
		PRC	= POINT OF REVERSE CURV
		PCC	= POINT OF COMPOUND CURVATURE
		D.E.	= DRAINAGE EASEMENT
		W.M.E.	= WALL & MAINTENANCE EASEMENT



DETAIL A
SCALE: 1" = 50'

THIS PLAT PREPARED BY
LESLIE E. HOWARD, PROFESSIONAL SURVEYOR AND MAPPER
FLORIDA CERTIFICATION No. 5611
B.S.E. CONSULTANTS, INC. LB No. 4905

B.S.E. CONSULTANTS, INC.
CONSULTING - ENGINEERING - LAND SURVEYING
312 SOUTH HARBOR CITY BOULEVARD, SUITE 4
MELBOURNE, FLORIDA PHONES: (321) 725-3674 FAX: (321) 723-1159
CERTIFICATE OF BUSINESS AUTHORIZATION: 4905
CERTIFICATE OF LAND SURVEYING BUSINESS AUTHORIZATION: LB0004905

DATE: 12/01/05
NOTICE: THIS PLAT, AS RECORDED IN ITS GRAPHIC FORM, IS THE OFFICIAL DEPICTION OF THE SUBDIVIDED LANDS DESCRIBED HEREIN AND WILL IN NO CIRCUMSTANCES BE SUPPLANTED IN AUTHORITY BY ANY OTHER GRAPHIC OR DIGITAL FORM OF THE PLAT. THERE MAY BE ADDITIONAL RESTRICTIONS THAT ARE NOT RECORDED ON THIS PLAT THAT MAY BE FOUND IN THE PUBLIC RECORDS OF THIS COUNTY.