

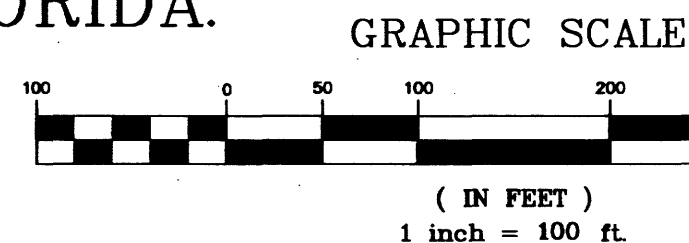
NOTE:
PRIOR TO THE RELEASE OF THE PERFORMANCE BOND,
ALL LOT CORNER MONUMENTATION WILL BE SET AS
1/2" IRON RODS WITH CAPS MARKED "LB 3608".

HARVARD APARTMENTS

A REPLAT OF A PORTION OF LOTS 20, 21, 22 AND 23,
INDIAN RIVER LAND COMPANY, PLAT BOOK 1, PAGE 163, LYING IN
SECTION 21, TOWNSHIP 28 SOUTH, RANGE 37 EAST, CITY OF MELBOURNE, COUNTY OF BREVARD, FLORIDA.

PLAT BOOK 54 PAGE 56
SHEET 2 OF 2
SECTION 21 TWP. 28 S., RANGE 37 E.

NOTE: THIS PLAT, AS RECORDED IN ITS GRAPHIC FORM, IS THE OFFICIAL
DEPICTION OF THE SUBDIVIDED LANDS DESCRIBED HEREIN AND WILL IN NO
CIRCUMSTANCES BE SUPPLANTED IN AUTHORITY BY ANY OTHER GRAPHIC OR
DIGITAL FORM OF THE PLAT. THERE MAY BE ADDITIONAL RESTRICTIONS THAT
ARE NOT RECORDED ON THIS PLAT THAT MAY BE FOUND IN THE PUBLIC
RECORDS OF THIS COUNTY.

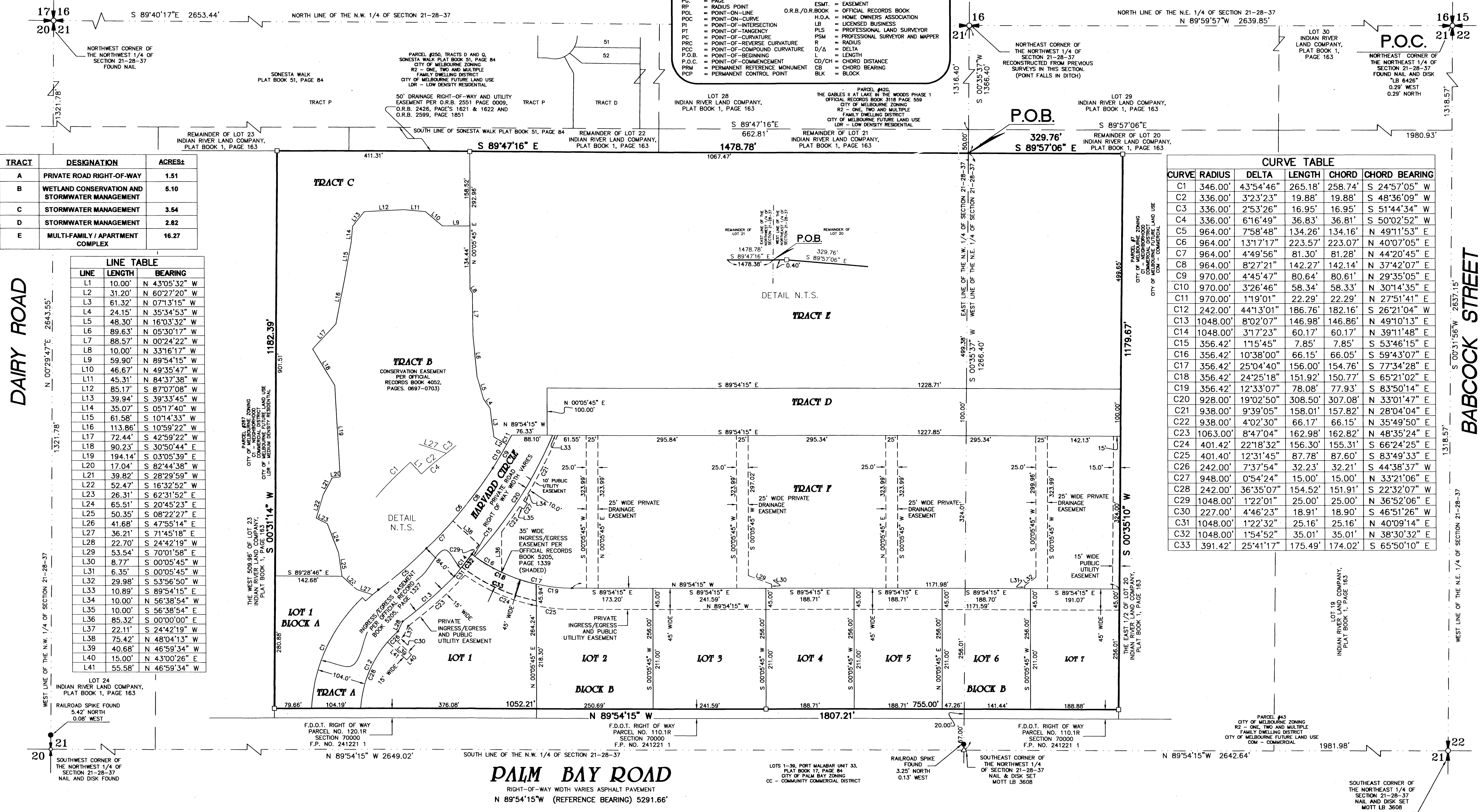


PREPARED BY:
WILLIAM MOTT LAND SURVEYING INC.

3716 NORTH WICKHAM ROAD, SUITE 3
MELBOURNE, FLORIDA 32935-2338
PHONE (321) 751-4444 FAX (321) 751-4445
PROJECT NUMBER: 204-0300
DRAWING NAME: 04-300-PRE-PLAT.DWG
DRAWN BY: TYLYN BLANCHARD
CHECKED BY: DANIEL D. GARNER P.S.M. 6189

LEGEND:

- = 4"x4" CONCRETE MONUMENT WITH NAIL AND DISK MARKED "PRM LB 3608" (SET)
- = 4"x4" CONCRETE MONUMENT WITH NAIL AND DISK MARKED "PRM LB 3608" (FOUND), (UNLESS OTHERWISE SHOWN)
- = NAIL AND DISK MARKED "PCP LB 3608" (SET)
- ◊ = NAIL AND DISK MARKED "PCP LB 3608" (FOUND)
- △ = NAIL AND DISK MARKED "PRM LB 3608" (SET)
- ▲ = NAIL AND DISK MARKED "PRM LB 3608" (FOUND)
- = PUBLIC UTILITIES AND DRAINAGE EASEMENT
- = CURVE NUMBER FOR CURVE TABLE
- = LINE NUMBER FOR LINE TABLE
- R/W = RIGHT-OF-WAY
- P.B. = PLAT BOOK
- PC = PAGE
- RP = RADIUS POINT
- POL = POINT-ON-LINE
- POC = POINT-ON-CURVE
- PI = POINT-OF-INTERSECTION
- PT = POINT-OF-TANGENCY
- PC = POINT-OF-CURVATURE
- PRC = POINT-OF-REVERSE CURVATURE
- POC = POINT-OF-COMPOUND CURVATURE
- P.O.B. = POINT-OF-BEGINNING
- P.O.C. = POINT-OF-COMMENCEMENT
- PRM = PERMANENT REFERENCE MONUMENT
- PCP = PERMANENT CONTROL POINT
- X = DENOTES LINE BREAK/CHANGE IN DIRECTION
- (R) = RADIAL
- (NR) = NON-RADIAL
- ESMT. = EASEMENT
- H.O.A. = HOME OWNERS ASSOCIATION
- LB = LICENSED BUSINESS
- PLS = PROFESSIONAL LAND SURVEYOR
- PSM = PROFESSIONAL SURVEYOR AND MAPPER
- R = RADIUS
- D/A = DELTA
- L = LENGTH
- CD/CH = CHORD DISTANCE
- CB = CHORD BEARING
- BLK = BLOCK



TRACT	DESIGNATION	ACRES±
A	PRIVATE ROAD RIGHT-OF-WAY	1.51
B	WETLAND CONSERVATION AND STORMWATER MANAGEMENT	5.10
C	STORMWATER MANAGEMENT	3.54
D	STORMWATER MANAGEMENT	2.82
E	MULTI-FAMILY / APARTMENT COMPLEX	16.27

LINE TABLE

LINE	LENGTH	BEARING
L1	10.00'	N 43°05'32" W
L2	31.20'	N 60°27'20" W
L3	61.32'	N 07°13'15" W
L4	24.15'	N 35°34'53" W
L5	48.30'	N 16°03'32" W
L6	89.63'	N 05°30'17" W
L7	88.57'	N 00°24'22" W
L8	10.00'	N 33°16'17" W
L9	59.90'	N 89°54'15" W
L10	46.67'	N 49°35'47" W
L11	45.31'	N 84°37'38" W
L12	85.17'	S 87°07'08" W
L13	39.94'	S 39°33'45" W
L14	35.07'	S 05°17'40" W
L15	61.58'	S 10°14'33" W
L16	113.86'	S 10°59'22" W
L17	72.44'	S 42°59'22" W
L18	90.23'	S 30°50'44" E
L19	194.14'	S 03°05'39" E
L20	17.04'	S 82°44'38" W
L21	39.82'	S 28°29'59" W
L22	52.47'	S 16°32'52" W
L23	26.31'	S 62°31'52" E
L24	65.51'	S 20°45'23" E
L25	50.35'	S 08°22'27" E
L26	41.68'	S 47°55'14" E
L27	36.21'	S 71°45'18" E
L28	22.70'	S 24°42'19" W
L29	53.54'	S 70°01'58" E
L30	8.77'	S 00°05'45" W
L31	6.35'	S 00°05'45" W
L32	29.98'	S 53°56'50" W
L33	10.89'	S 89°54'15" E
L34	10.00'	N 56°38'54" E
L35	10.00'	S 56°38'54" E
L36	85.32'	S 00°00'00" E
L37	22.11'	S 24°42'19" W
L38	75.42'	N 48°04'13" W
L39	40.68'	N 46°59'34" W
L40	15.00'	N 43°00'26" E
L41	55.58'	N 46°59'34" W

CURVE TABLE

CURVE	RADIUS	DELTA	LENGTH	CHORD	CHORD BEARING
C1	346.00'	43°54'46"	265.18'	258.74'	S 24°57'05" W
C2	336.00'	3°23'23"	19.88'	19.88'	S 48°36'09" W
C3	336.00'	2°53'26"	16.95'	16.95'	S 51°44'34" W
C4	336.00'	6°16'49"	36.83'	36.81'	S 50°02'52" W
C5	964.00'	7°58'48"	134.26'	134.16'	N 49°11'53" E
C6	964.00'	13°17'17"	223.57'	223.07'	N 40°07'05" E
C7	964.00'	4°49'56"	81.30'	81.28'	N 44°20'45" E
C8	964.00'	8°27'21"	142.27'	142.14'	N 37°42'07" E
C9	970.00'	4°45'47"	80.64'	80.61'	N 29°35'05" E
C10	970.00'	3°26'46"	58.34'	58.33'	N 30°14'35" E
C11	970.00'	1°19'01"	22.29'	22.29'	N 27°51'41" E
C12	242.00'	44°13'01"	186.76'	182.16'	S 26°21'04" W
C13	1048.00'	8°02'07"	146.98'	146.86'	N 49°10'13" E
C14	1048.00'	3°17'23"	60.17'	60.17'	N 39°11'48" E
C15	356.42'	1°15'45"	7.85'	7.85'	S 53°46'15" E
C16	356.42'	10°38'00"	66.15'	66.05'	S 59°43'07" E
C17	356.42'	25°04'40"	156.00'	154.76'	S 77°34'28" E
C18	356.42'	24°25'18"	151.92'	150.77'	S 65°21'02" E
C19	356.42'	12°33'07"	78.08'	77.93'	S 83°50'14" E
C20	928.00'	19°02'50"	308.50'	307.08'	N 33°01'47" E
C21	938.00'	9°39'05"	158.01'	157.82'	N 28°04'04" E
C22	938.00'	4°02'30"	66.17'	66.15'	N 35°49'50" E
C23	1063.00'	8°47'04"	162.98'	162.82'	N 48°35'24" E
C24	401.42'	22°18'32"	156.30'	155.31'	S 66°24'25" E
C25	401.40'	12°31'45"	87.78'	87.60'	S 83°49'33" E
C26	242.00'	7°37'54"	32.23'	32.21'	S 44°38'37" W
C27	948.00'	0°54'24"	15.00'	15.00'	N 33°21'06" E
C28	242.00'	36°35'07"	154.52'	151.91'	S 22°32'07" W
C29	1048.00'	1°22'01"	25.00'	25.00'	N 36°52'06" E
C30	227.00'	4°46'23"	18.91'	18.90'	S 46°51'26" W
C31	1048.00'	1°22'32"	25.16'	25.16'	N 40°09'14" E
C32	1048.00'	1°54'52"	35.01'	35.01'	N 38°30'32" E
C33	391.42'	25°41'17"	175.49'	174.02'	S 65°50'10" E

DAIRY ROAD

BABCOCK STREET

PALM BAY ROAD
RIGHT-OF-WAY WIDTH VARIES ASPHALT PAVEMENT
N 89°54'15" W (REFERENCE BEARING) 5291.66'