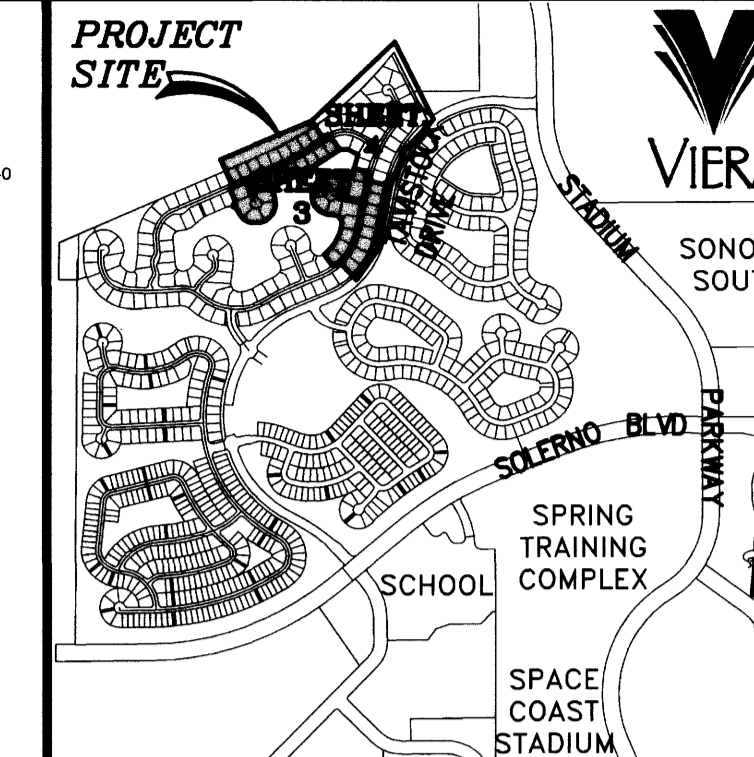
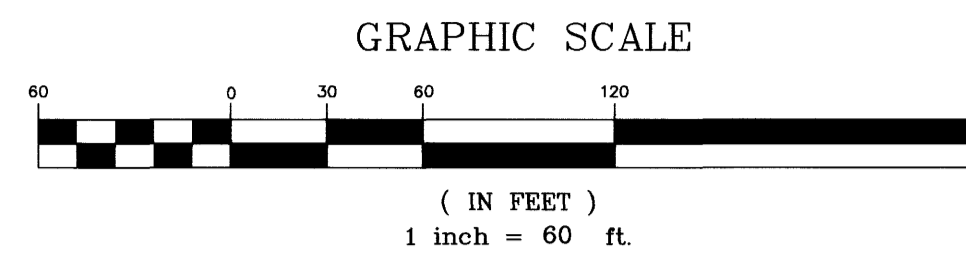


CHAROLAIS ESTATES - PHASE 2

A PORTION OF PARCEL 4 OF VIERA CENTRAL P.U.D.
AND BE A PORTION OF SECTIONS 29 & 32, TOWNSHIP 25 SOUTH,
RANGE 36 EAST
VIERA, BREVARD COUNTY, FLORIDA

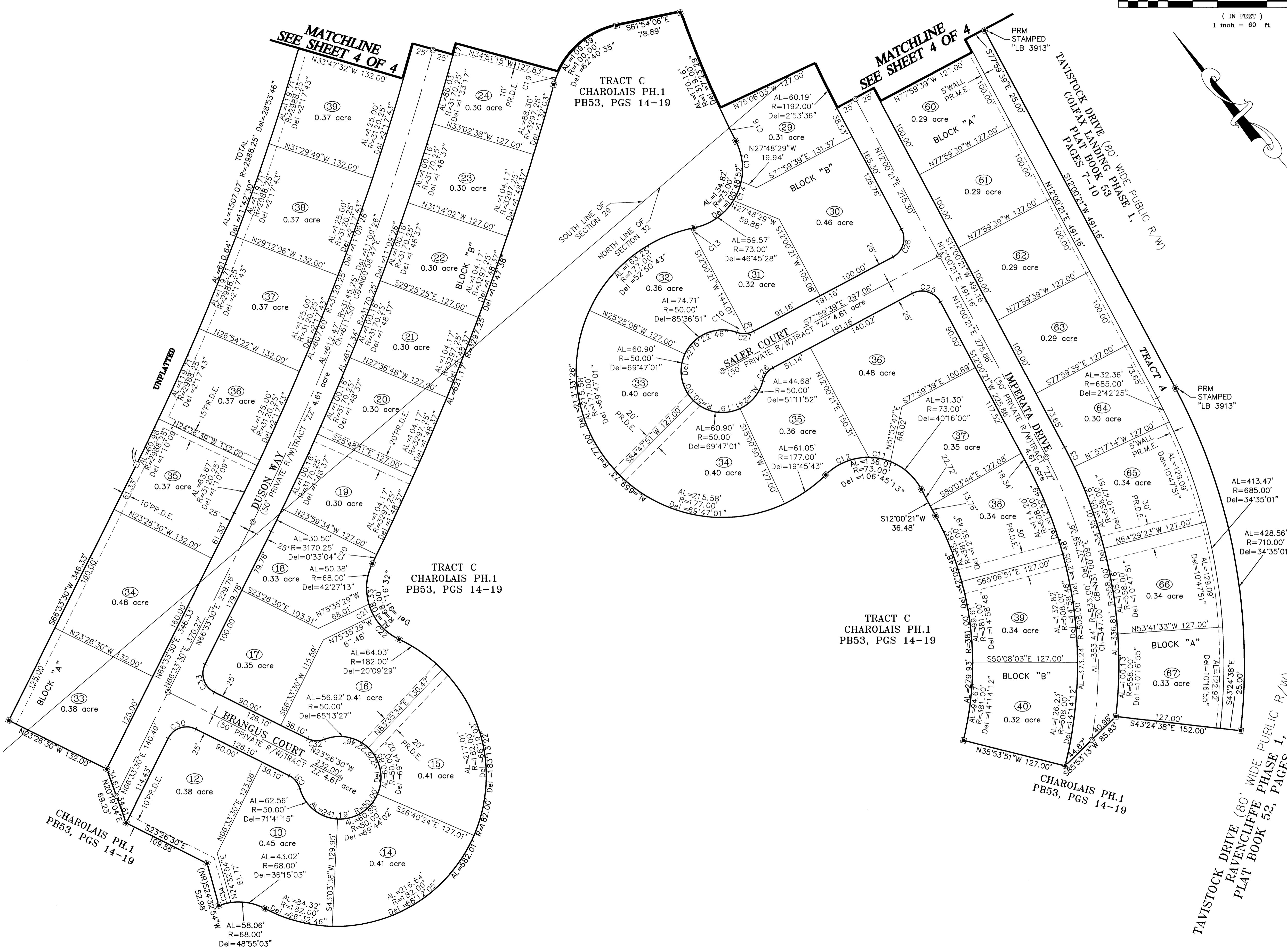
PLAT BOOK 54, PAGE 26
SHEET 3 OF 4
SECTIONS 29 & 32, TWP. 25 S., RANGE 36 E.



KEY MAP
N.T.S.

LEGEND

- ⊙ = PERMANENT CONTROL POINT SET (METAL MARKER WITH A METAL DISK STAMPED "PCP-L.B. 4905")
- ⊕ = PERMANENT CONTROL POINT FOUND (METAL MARKER WITH A METAL DISK STAMPED "PCP-L.B. 4905")
- ⊠ = PERMANENT REFERENCE MONUMENT - SET (4"x4" CONCRETE MARKER WITH METAL DISK STAMPED "PRM L.B. 4905")
- ⊡ = PERMANENT REFERENCE MONUMENT - FOUND (4"x4" CONCRETE MARKER WITH METAL DISK STAMPED "PRM L.B. 4905" UNLESS NOTED OTHERWISE)
- ⊕ 28
⊕ 33 = SECTION CORNER - FOUND (AS DESCRIBED)
- ⊕ 28
⊕ 33 = SECTION QUARTER CORNER - NOT FOUND
- AL = ARC LENGTH OF CURVE
- C# = CURVE TABLE LABEL
- CB = CHORD BEARING OF CURVE
- Ch = CHORD LENGTH OF CURVE
- C.O.C. = CUSP OF CURVE
- Del = CENTRAL ANGLE OF CURVE
- D.E. = DRAINAGE EASEMENT
- D.&A.E. = DRAINAGE AND ACCESS EASEMENT
- M.E. = MAINTENANCE EASEMENT
- O.R.B. = OFFICIAL RECORD BOOK
- P.B. = PLAT BOOK
- PGS. = PAGES
- PR. = PRIVATE
- PU. = PUBLIC
- P.C. = POINT OF CURVE
- P.C.C. = POINT OF COMPOUND CURVE
- P.O.B. = POINT OF BEGINNING
- P.O.C. = POINT OF COMMENCEMENT
- P.R.C. = POINT OF REVERSE CURVE
- P.R.M. = PERMANENT REFERENCE MONUMENT
- P.T. = POINT OF TANGENCY
- R = RADIUS OF CURVE
- R.B. = RADIAL BEARING
- R/W = RIGHT OF WAY
- U.E. = UTILITY EASEMENT



CURVE	RADIUS	LENGTH	DELTA	CHORD BEARING	CHORD
C3	558.00'	26.36'	2'42'25"	N13°21'33"E	26.36'
C7	225.00'	14.14'	3'36'04"	S57°12'06"W	14.14'
C9	25.00'	9.03'	20'42'01"	S67°38'39"E	8.98'
C10	25.00'	11.99'	27'29'21"	S43°32'57"E	11.88'
C11	73.00'	26.89'	21'06'06"	N38°48'42"W	26.73'
C12	73.00'	57.83'	45'23'08"	N72°03'19"W	56.33'
C13	177.00'	4.27'	1'22'58"	N61°52'56"W	4.27'
C14	73.00'	25.12'	19'43'08"	N62°11'31"E	25.00'
C15	73.00'	50.12'	39'20'16"	N32°39'49"E	49.14'
C16	1319.00'	43.84'	1'54'16"	S13°56'49"W	43.84'
C19	100.00'	15.95'	9'08'25"	S59°59'31"W	15.94'
C20	3297.25'	12.00'	0'12'31"	N66°06'41"E	12.00'
C21	68.00'	15.05'	12'40'56"	S17°25'16"W	15.02'
C22	68.00'	42.89'	36'08'24"	S06°59'24"E	42.18'
C25	25.00'	39.27'	90°00'00"	N32°59'39"W	35.36'
C26	25.00'	21.03'	48°11'23"	S77°54'39"W	20.41'
C27	25.00'	21.03'	48°11'23"	S53°53'58"E	20.41'
C28	25.00'	39.27'	90°00'00"	N57°00'21"E	35.36'
C30	25.00'	39.27'	90°00'00"	N68°26'30"W	35.36'
C31	25.00'	21.03'	48°11'23"	N00°39'11"E	20.41'
C32	25.00'	21.03'	48°11'23"	S47°32'11"E	20.41'
C33	25.00'	39.27'	90°00'00"	S21°33'30"W	35.36'
C34	68.00'	15.03'	12'40'00"	N64°25'17"W	15.00'

B.S.E. CONSULTANTS, INC.
CONSULTING - ENGINEERING - LAND SURVEYING
312 SOUTH HARBOR CITY BOULEVARD, SUITE 4
MELBOURNE, FLORIDA PHONE: (321) 725-3874 FAX: (321) 723-1159
CERTIFICATE OF BUSINESS AUTHORIZATION: 4905
CERTIFICATE OF LAND SURVEYING BUSINESS AUTHORIZATION: LB0004905

NOTICE: THIS PLAT, AS RECORDED IN ITS GRAPHIC FORM, IS THE OFFICIAL DEPICTION OF THE SUBDIVIDED LANDS DESCRIBED HEREIN AND WILL IN NO CIRCUMSTANCES BE SUPPLANTED IN AUTHORITY BY ANY OTHER GRAPHIC OR DIGITAL FORM OF THE PLAT. THERE MAY BE ADDITIONAL RESTRICTIONS THAT ARE NOT RECORDED ON THIS PLAT THAT MAY BE FOUND IN THE PUBLIC RECORDS OF THIS COUNTY.