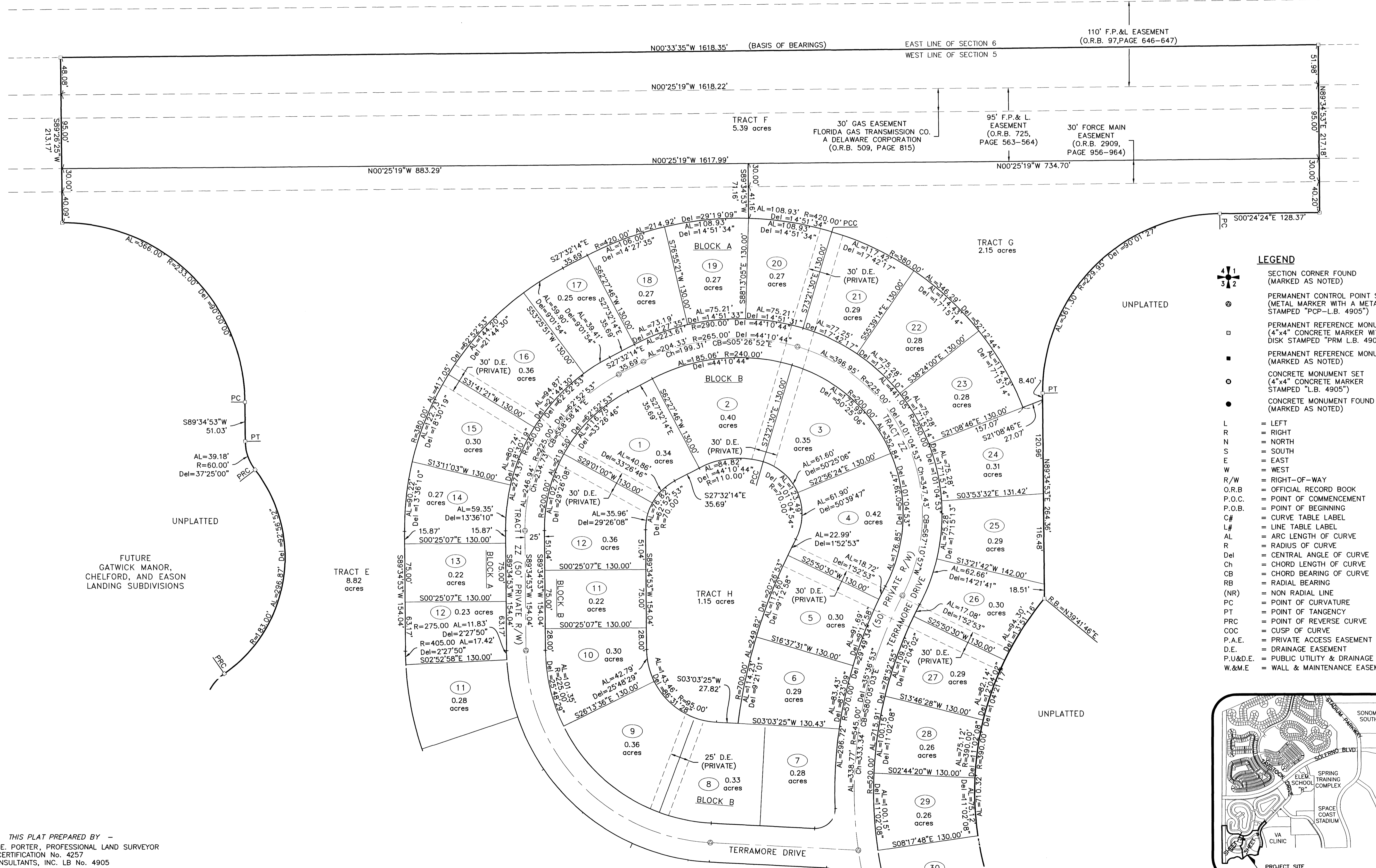
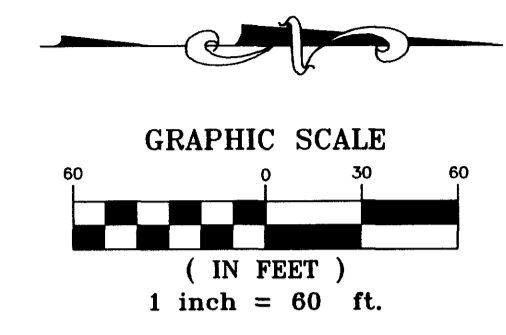
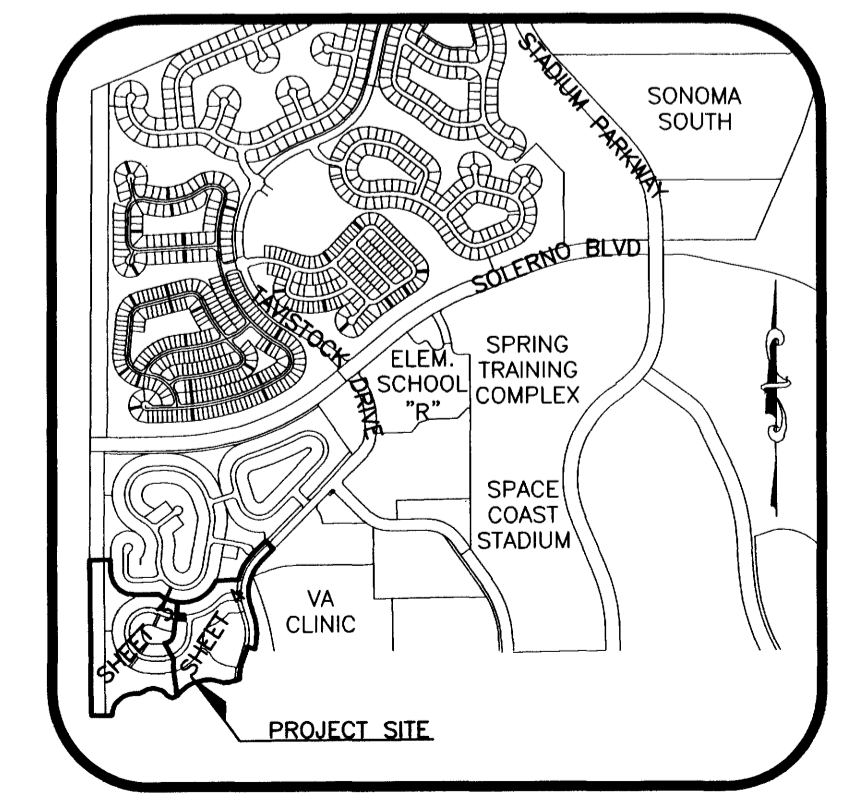


TERRAMORE SUBDIVISION

A PORTION OF PARCEL 4 VIERA CENTRAL P.U.D. AND BEING
 A PORTION OF SECTION 5, TOWNSHIP 26 SOUTH, RANGE 36 EAST
 VIERA, BREVARD COUNTY, FLORIDA



- LEGEND**
- SECTION CORNER FOUND (MARKED AS NOTED)
 - PERMANENT CONTROL POINT SET (METAL MARKER WITH A METAL DISK STAMPED "PCP-L.B. 4905")
 - PERMANENT REFERENCE MONUMENT SET (4"x4" CONCRETE MARKER WITH METAL DISK STAMPED "PRM L.B. 4905")
 - PERMANENT REFERENCE MONUMENT FOUND (MARKED AS NOTED)
 - CONCRETE MONUMENT SET (4"x4" CONCRETE MARKER STAMPED "L.B. 4905")
 - CONCRETE MONUMENT FOUND (MARKED AS NOTED)
 - L = LEFT
 - R = RIGHT
 - N = NORTH
 - S = SOUTH
 - E = EAST
 - W = WEST
 - R/W = RIGHT-OF-WAY
 - O.R.B. = OFFICIAL RECORD BOOK
 - P.O.C. = POINT OF COMMENCEMENT
 - P.O.B. = POINT OF BEGINNING
 - C# = CURVE TABLE LABEL
 - L# = LINE TABLE LABEL
 - AL = ARC LENGTH OF CURVE
 - R = RADIUS OF CURVE
 - Del = CENTRAL ANGLE OF CURVE
 - Ch = CHORD LENGTH OF CURVE
 - CB = CHORD BEARING OF CURVE
 - RB = RADIAL BEARING
 - (NR) = NON RADIAL LINE
 - PC = POINT OF CURVATURE
 - PT = POINT OF TANGENCY
 - PRC = POINT OF REVERSE CURVE
 - COC = CUSP OF CURVE
 - P.A.E. = PRIVATE ACCESS EASEMENT
 - D.E. = DRAINAGE EASEMENT
 - P.U.&D.E. = PUBLIC UTILITY & DRAINAGE EASEMENT
 - W.&M.E. = WALL & MAINTENANCE EASEMENT



THIS PLAT PREPARED BY
 CHARLES E. PORTER, PROFESSIONAL LAND SURVEYOR
 FLORIDA CERTIFICATION No. 4257
 B.S.E. CONSULTANTS, INC. LB No. 4905

B.S.E. CONSULTANTS, INC.
 CONSULTING - ENGINEERING - LAND SURVEYING
 312 SOUTH HARBOR CITY BOULEVARD, SUITE 4
 MELBOURNE, FLORIDA PHONE: (321) 725-3674 FAX: (321) 723-1159
 CERTIFICATE OF BUSINESS AUTHORIZATION: 4905
 CERTIFICATE OF LAND SURVEYING BUSINESS AUTHORIZATION: LB0004905

DATE: 04/18/05
 NOTICE: THIS PLAT, AS RECORDED IN ITS GRAPHIC FORM, IS THE OFFICIAL DEPICTION OF THE SUBDIVIDED LANDS DESCRIBED HEREIN AND WILL IN NO CIRCUMSTANCES BE SUPPLANTED IN AUTHORITY BY ANY OTHER GRAPHIC OR DIGITAL FORM OF THE PLAT. THERE MAY BE ADDITIONAL RESTRICTIONS THAT ARE NOT RECORDED ON THIS PLAT THAT MAY BE FOUND IN THE PUBLIC RECORDS OF THIS COUNTY.

2005 B.S.E. CONSULTANTS, INC. H:\Projects\Drawings\00758307-308.dwg 8/12/2005 7:05:10 AM EDT

