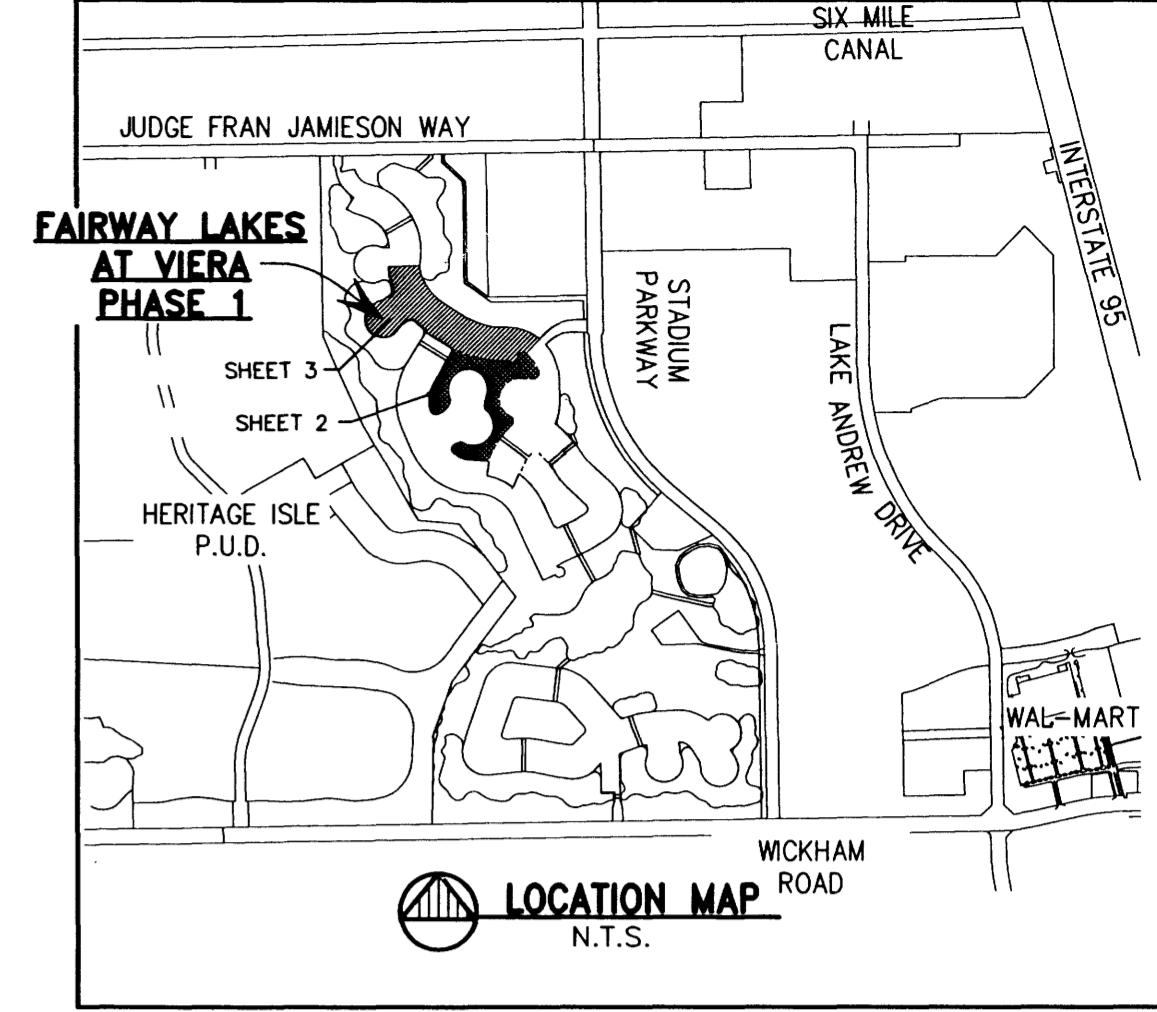


FAIRWAY LAKES AT VIERA- PHASE 1

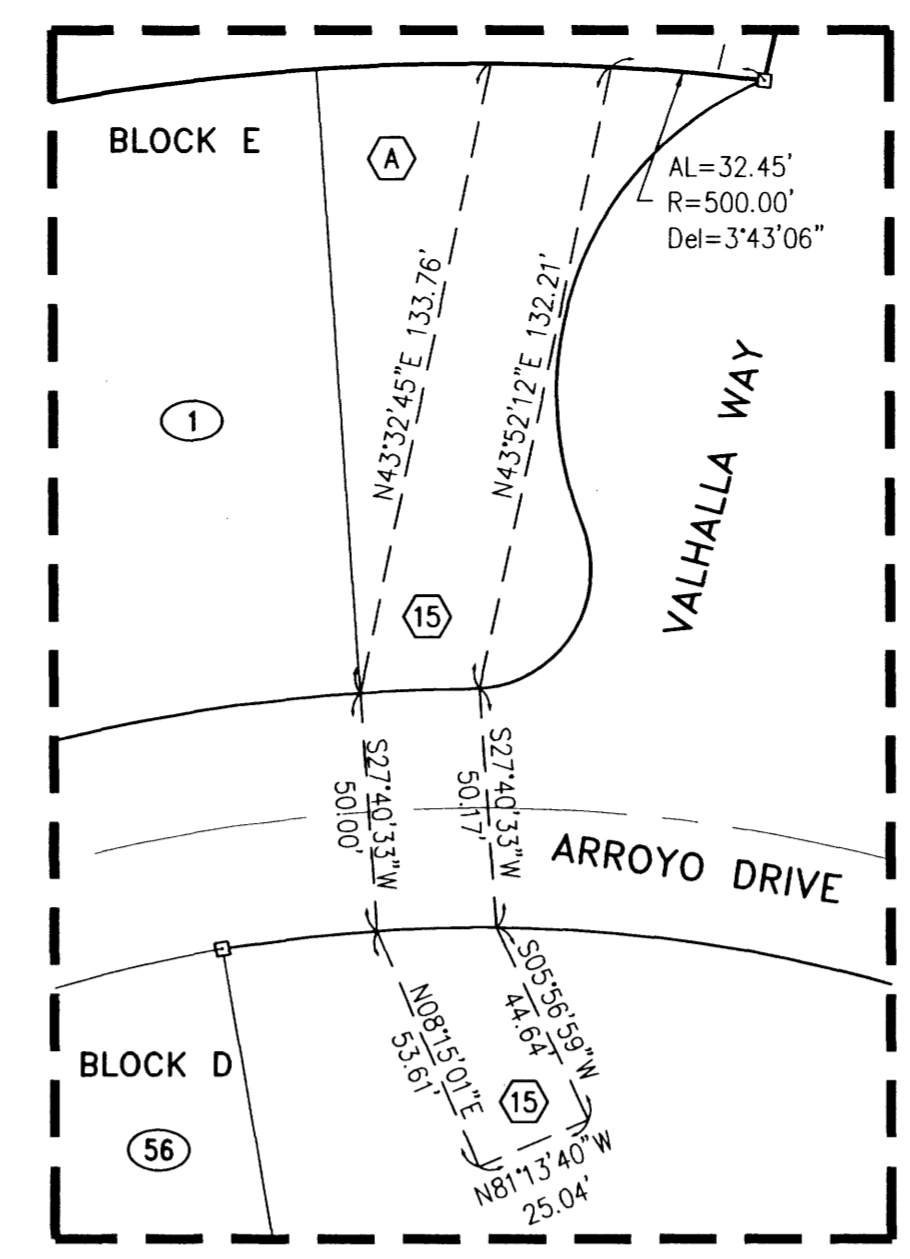
BEING A REPLAT OF A PORTION OF TRACT A, DURAN GOLF CLUB AS RECORDED IN PLAT BOOK 51 PAGES 63-65 SITUATED IN A PORTION OF SECTIONS 5, 8, AND 9, TOWNSHIP 26 SOUTH, RANGE 36 EAST.

VIERA, BREVARD COUNTY, FLORIDA

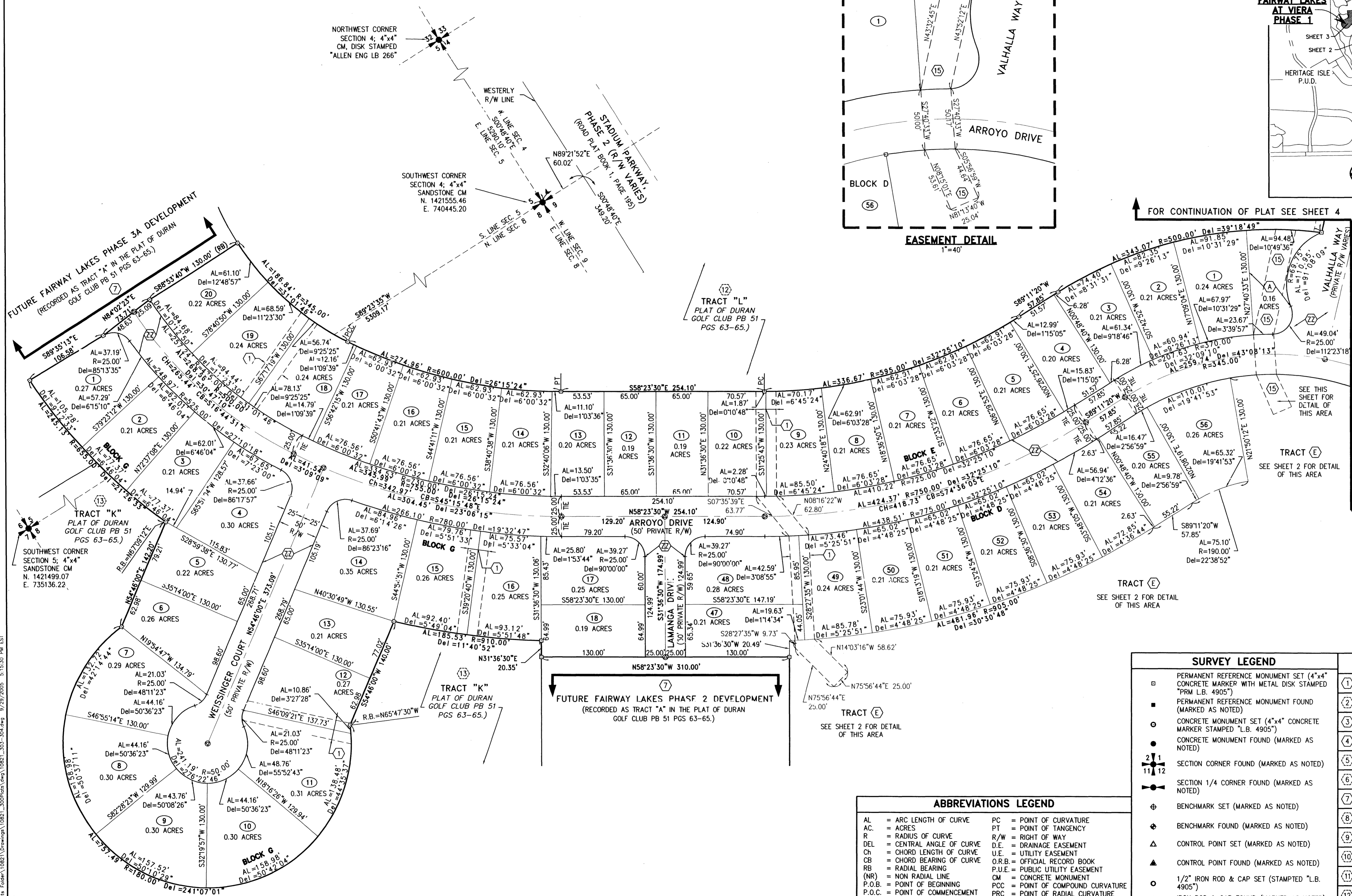


NORTHWEST CORNER SECTION 4: 4"x4" CM. DISK STAMPED "ALLEN ENG LB 266"

SOUTHWEST CORNER SECTION 4: 4"x4" SANDSTONE CM N. 1421555.46 E. 740445.20



EASEMENT DETAIL 1"=40'

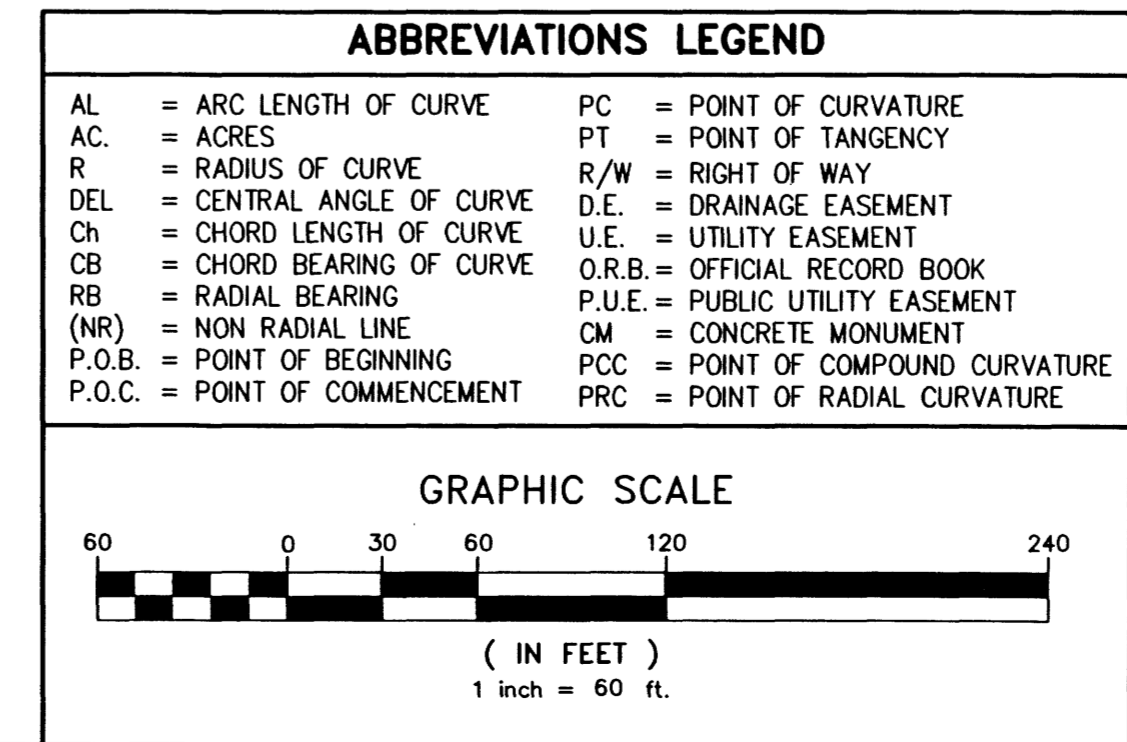


FOR CONTINUATION OF PLAT SEE SHEET 4

FOR CONTINUATION OF PLAT SEE SHEET 4

| SURVEY LEGEND | |
|---------------|--|
| | PERMANENT REFERENCE MONUMENT SET (4"x4" CONCRETE MARKER WITH METAL DISK STAMPED "PRM L.B. 4905") |
| | PERMANENT REFERENCE MONUMENT FOUND (MARKED AS NOTED) |
| | CONCRETE MONUMENT SET (4"x4" CONCRETE MARKER STAMPED "L.B. 4905") |
| | CONCRETE MONUMENT FOUND (MARKED AS NOTED) |
| | SECTION CORNER FOUND (MARKED AS NOTED) |
| | SECTION 1/4 CORNER FOUND (MARKED AS NOTED) |
| | BENCHMARK SET (MARKED AS NOTED) |
| | BENCHMARK FOUND (MARKED AS NOTED) |
| | CONTROL POINT SET (MARKED AS NOTED) |
| | CONTROL POINT FOUND (MARKED AS NOTED) |
| | 1/2" IRON ROD & CAP SET (STAMPED "L.B. 4905") |
| | PERMANENT CONTROL POINT SET (METAL MARKER WITH A METAL DISK STAMPED "PCP-L.B. 4905") |
| | PERMANENT CONTROL POINT FOUND (MARKED AS NOTED) |
| | IRON ROD & CAP FOUND (MARKED AS NOTED) |
| | PROPOSED KEY NOTE CALL OUT |
| | EXISTING KEY NOTE CALL OUT |

| KEYED NOTES | |
|-------------|--|
| (1) | 25' PRIVATE D.E. AND PUBLIC U.E. |
| (2) | EXISTING 35' PRIVATE D.E. |
| (3) | 12.5' PRIVATE D.E. AND PUBLIC U.E. |
| (4) | 20' PRIVATE D.E. AND PUBLIC U.E. |
| (5) | EXISTING 35' OPEN SPACE, SIGNAGE, SIDEWALK AND LANDSCAPE EASEMENT (PB 51, PGS. 63-65). |
| (6) | EXISTING 50' OPEN SPACE, SIGNAGE, SIDEWALK AND LANDSCAPE EASEMENT (PB 51, PGS. 63-65). |
| (7) | REMAINING TRACT A PER PLAT OF DURAN GOLF CLUB (PB 51, PGS. 63-65) |
| (8) | TRACT C1 PER PLAT OF DURAN GOLF CLUB (PB 51, PGS. 63-65) |
| (9) | TRACT C2 PER PLAT OF DURAN GOLF CLUB (PB 51, PGS. 63-65) |
| (10) | TRACT D PER PLAT OF DURAN GOLF CLUB (PB 51, PGS. 63-65) |
| (11) | TRACT E PER PLAT OF DURAN GOLF CLUB (PB 51, PGS. 63-65) |
| (12) | TRACT L PER PLAT OF DURAN GOLF CLUB (PB 51, PGS. 63-65) |
| (13) | TRACT K PER PLAT OF DURAN GOLF CLUB (PB 51, PGS. 63-65) |
| (14) | EXISTING PRIVATE D.E. |
| (15) | 25' PRIVATE D.E. SEE DETAIL ON SHEET 3 |



THIS PLAT PREPARED BY
CHARLES E. PORTER, PROFESSIONAL LAND SURVEYOR
FLORIDA CERTIFICATION No. 4257
B.S.E. CONSULTANTS, INC. LB No. 4905

B.S.E. CONSULTANTS, INC.
CONSULTING ENGINEERING AND LAND SURVEYING
312 SOUTH HARBOR CITY BOULEVARD, SUITE 4
MELBOURNE, FLORIDA PHONE: (321) 725-3774 FAX: (321) 723-1156
CERTIFICATE OF BUSINESS AUTHORIZATION: 4905
CERTIFICATE OF LAND SURVEYING BUSINESS AUTHORIZATION: 180004905

NOTICE:
THIS PLAT, AS RECORDED IN ITS GRAPHIC FORM, IS THE OFFICIAL DEPICTION OF THE SUBDIVIDED LANDS DESCRIBED HEREIN AND WILL IN NO CIRCUMSTANCES BE SUPPLANTED IN AUTHORITY BY ANY OTHER GRAPHIC OR DIGITAL FORM OF THE PLAT. THERE MAY BE ADDITIONAL RESTRICTIONS THAT ARE NOT RECORDED ON THIS PLAT THAT MAY BE FOUND IN THE PUBLIC RECORDS OF THIS COUNTY.