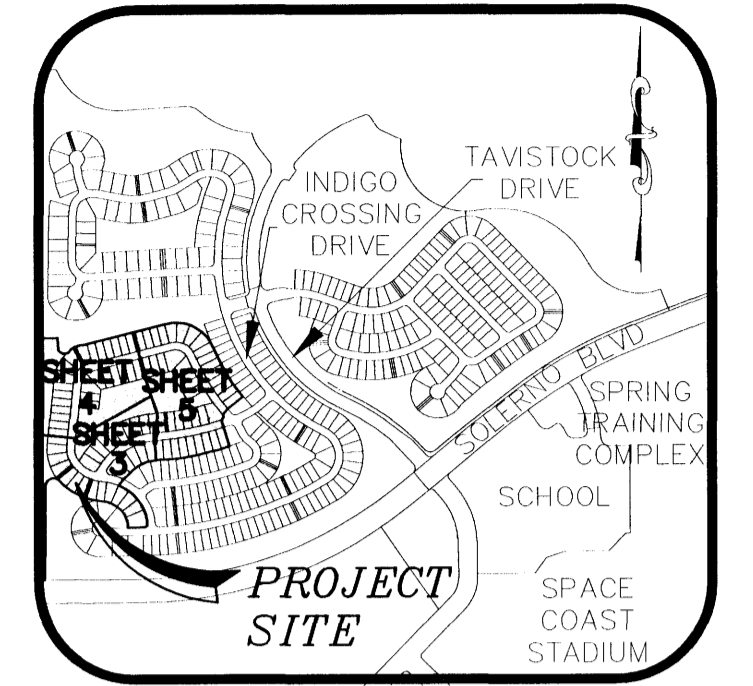


INDIGO CROSSING - PHASE 4

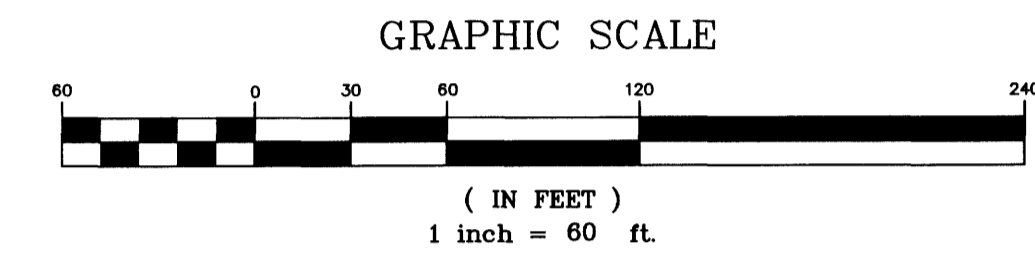
VIERA CENTRAL P.U.D. - A PORTION OF PARCEL 4

SECTION 32, TOWNSHIP 25 SOUTH, RANGE 36 EAST

VIERA, BREVARD COUNTY, FLORIDA

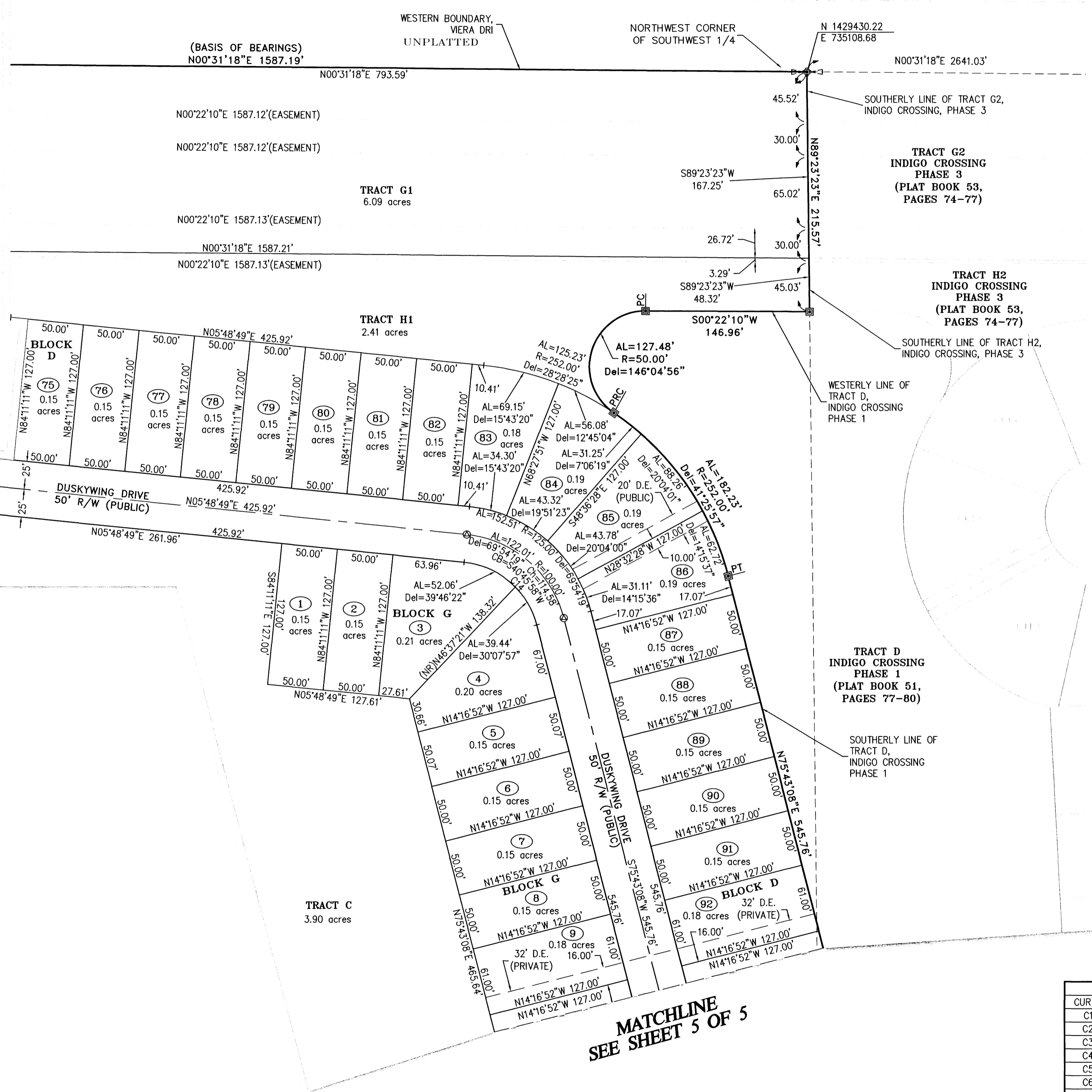


KEY MAP
N.T.S.



MATCHLINE
SEE SHEET 3 OF 5

MATCHLINE
SEE SHEET 5 OF 5



SURVEY LEGEND

- PERMANENT REFERENCE MONUMENT SET (4"x4" CONCRETE MARKER WITH METAL DISK STAMPED "PRM L.B. 4905")
- PERMANENT REFERENCE MONUMENT FOUND (4"x4" CONCRETE MARKER WITH METAL DISK STAMPED "PRM L.B. 4905")
- ▣ PERMANENT REFERENCE MONUMENT FOUND (4"x4" CONCRETE MARKER WITH METAL DISK STAMPED "PRM L.B. 3913")
- CONCRETE MONUMENT SET (4"x4" CONCRETE MARKER STAMPED "L.B. 4905")
- CONCRETE MONUMENT FOUND (MARKED AS NOTED)
- ⊕ SECTION CORNER SET (MARKED AS NOTED)
- ⊙ SECTION CORNER FOUND (MARKED AS NOTED)
- ⊖ SECTION CORNER SEARCHED FOR NOT FOUND (MARKED AS NOTED)
- ⊗ SECTION 1/4 CORNER SET (MARKED AS NOTED)
- ⊘ SECTION 1/4 CORNER FOUND (MARKED AS NOTED)
- ⊙ SECTION 1/4 CORNER SEARCHED FOR NOT FOUND (MARKED AS NOTED)
- ⊕ 1/2" IRON ROD & CAP SET (STAMPED "L.B. 4905")
- IRON ROD & CAP FOUND (MARKED AS NOTED)
- ⊕ PERMANENT CONTROL POINT SET (METAL MARKER WITH A METAL DISK STAMPED "PCP-L.B. 4905")
- PERMANENT CONTROL POINT FOUND (MARKED AS NOTED)
- AL = ARC LENGTH OF CURVE
- R = RADIUS OF CURVE
- Ch = CENTRAL ANGLE OF CURVE
- Ch = CHORD LENGTH OF CURVE
- CB = CHORD BEARING OF CURVE
- RB = RADIAL BEARING
- (NR) = NON RADIAL LINE
- P.O.B. = POINT OF BEGINNING
- P.O.C. = POINT OF COMMENCEMENT
- PC = POINT OF CURVATURE
- PT = POINT OF TANGENT
- C# = CURVE TABLE LABEL
- R/W = RIGHT OF WAY
- D.E. = DRAINAGE EASEMENT
- U.E. = UTILITY EASEMENT
- O.R.B. = OFFICIAL RECORD BOOK
- PC = PAGE
- FP&L = FLORIDA POWER & LIGHT
- DRI = DEVELOPMENT OF REGIONAL IMPACT
- PCC = POINT OF COMPOUND CURVE
- PRC = POINT OF REVERSE CURVE
- TELE = TELEPHONE
- I.R. = IRON ROD
- I.R.C. = IRON ROD WITH CAP

CURVE TABLE					
CURVE	RADIUS	LENGTH	DELTA	CHORD BEARING	CHORD
C1	304.00'	14.18'	2°40'22"	N65°43'12"W	14.18'
C2	304.00'	25.04'	4°43'13"	N84°01'22"W	25.04'
C3	275.00'	25.97'	5°24'41"	S83°40'38"E	25.96'
C4	175.00'	14.84'	4°51'36"	S40°10'13"E	14.84'
C5	302.00'	3.05'	0°34'46"	S42°18'38"E	3.05'
C6	302.00'	22.56'	4°16'50"	S39°52'50"E	22.56'
C7	125.00'	9.11'	4°10'27"	N25°25'16"W	9.10'
C8	252.00'	18.36'	4°10'27"	N25°25'16"W	18.36'
C9	277.00'	6.03'	1°14'52"	S86°09'04"W	6.03'
C10	404.00'	8.80'	1°14'52"	S86°09'04"W	8.80'
C11	25.00'	49.79'	114°06'40"	S22°51'44"E	41.96'
C12	25.00'	36.28'	83°08'24"	N70°36'21"E	33.18'
C13	125.00'	7.55'	3°27'45"	S40°52'09"E	7.55'
C14	75.00'	91.51'	69°54'19"	S40°45'58"W	85.93'
C15	1590.00'	15.86'	0°34'17"	N86°29'21"E	15.86'
C16	1463.00'	14.59'	0°34'17"	N86°29'21"E	14.59'

THIS PLAT PREPARED BY
 CHARLES E. PORTER, PROFESSIONAL LAND SURVEYOR
 FLORIDA CERTIFICATION No. 4257
 B.S.E. CONSULTANTS, INC. LB No. 4905

B.S.E. CONSULTANTS, INC.
 CONSULTING - ENGINEERING - LAND SURVEYING
 312 SOUTH HARBOR CITY BOULEVARD, SUITE 4
 MELBOURNE, FLORIDA PHONE: (321) 725-3674 FAX: (321) 723-1159
 CERTIFICATE OF BUSINESS AUTHORIZATION: 4905
 CERTIFICATE OF LAND SURVEYING BUSINESS AUTHORIZATION: LB0004905

DATE: 8-19-05
 B.S.E. DWG. 10690314

NOTICE: THIS PLAT, AS RECORDED IN ITS GRAPHIC FORM, IS THE OFFICIAL DEPICTION OF THE SUBDIVIDED LANDS DESCRIBED HEREIN AND WILL IN NO CIRCUMSTANCES BE SUPPLANTED IN AUTHORITY BY ANY OTHER GRAPHIC OR DIGITAL FORM OF THE PLAT. THERE MAY BE ADDITIONAL RESTRICTIONS THAT ARE NOT RECORDED ON THIS PLAT THAT MAY BE FOUND IN THE PUBLIC RECORDS OF THIS COUNTY.

H:\Projects\Folder_10690314\Drawings\308P\4510690314-315.dwg 8/22/2005 3:56:41 PM ENT
 © 2005 B.S.E. CONSULTANTS, INC.