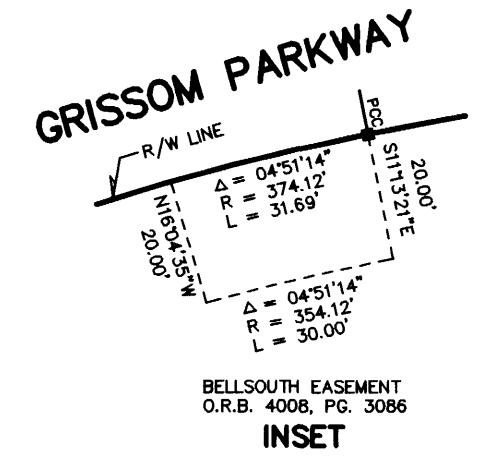
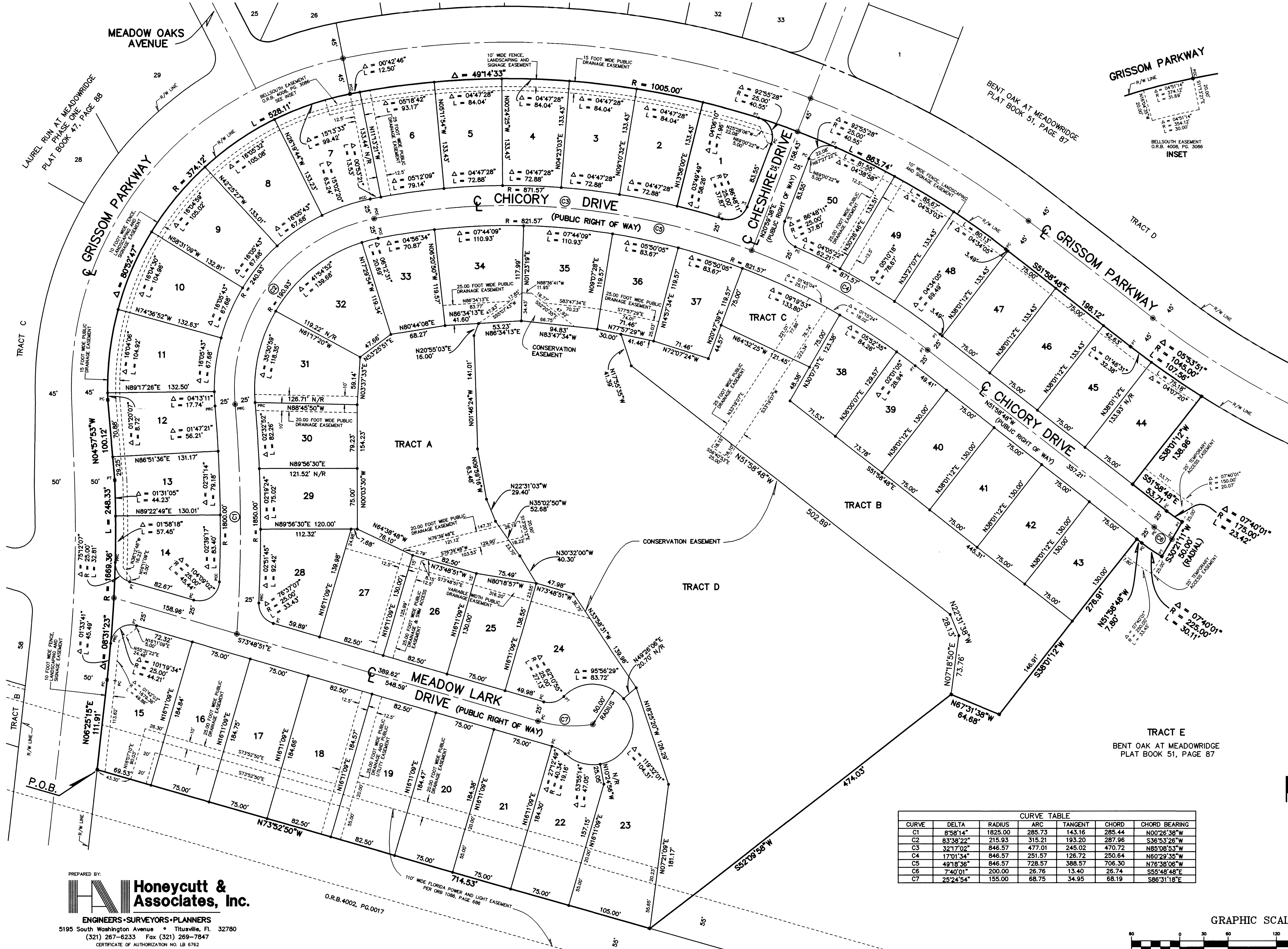


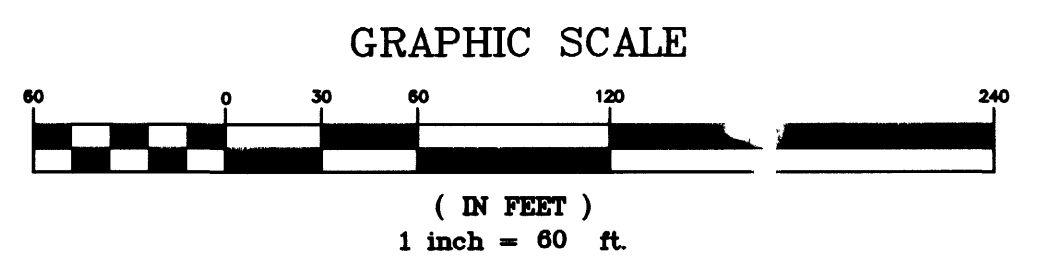
BENT OAK AT MEADOWRIDGE, PHASE II

A RESUBDIVISION OF A PART OF TRACT E OF BENT OAK AT MEADOWRIDGE, RECORDED IN PLAT BOOK 51, PAGES 87 THROUGH 90 OF THE PUBLIC RECORDS OF BREVARD COUNTY, FLORIDA, BEING A PART OF THE WEST 1/2 OF SECTION 34, TOWNSHIP 22 SOUTH, RANGE 35 EAST, CITY OF TITUSVILLE, BREVARD COUNTY, FLORIDA



CURVE TABLE						
CURVE	DELTA	RADIUS	ARC	TANGENT	CHORD	CHORD BEARING
C1	8°58'14"	1825.00	285.73	143.16	285.44	N00°26'38"W
C2	83°38'22"	215.93	315.21	193.20	287.96	S36°53'26"W
C3	32°17'02"	846.57	477.01	245.02	470.72	N85°08'53"W
C4	17°01'34"	846.57	251.57	126.72	250.64	N80°29'35"W
C5	49°18'36"	846.57	728.57	388.57	706.30	N76°38'08"W
C6	74°01'1"	200.00	26.76	13.40	26.74	S55°48'48"E
C7	23°24'34"	155.00	68.75	34.95	68.19	S86°31'18"E

PREPARED BY:
Honeycutt & Associates, Inc.
 ENGINEERS • SURVEYORS • PLANNERS
 5195 South Washington Avenue • Titusville, FL 32780
 (321) 267-6233 Fax (321) 269-7847
 CERTIFICATE OF AUTHORIZATION NO. LB 6782



O.R.B. 4002, PG. 0017
 PER ORB 1086, PAGE 686