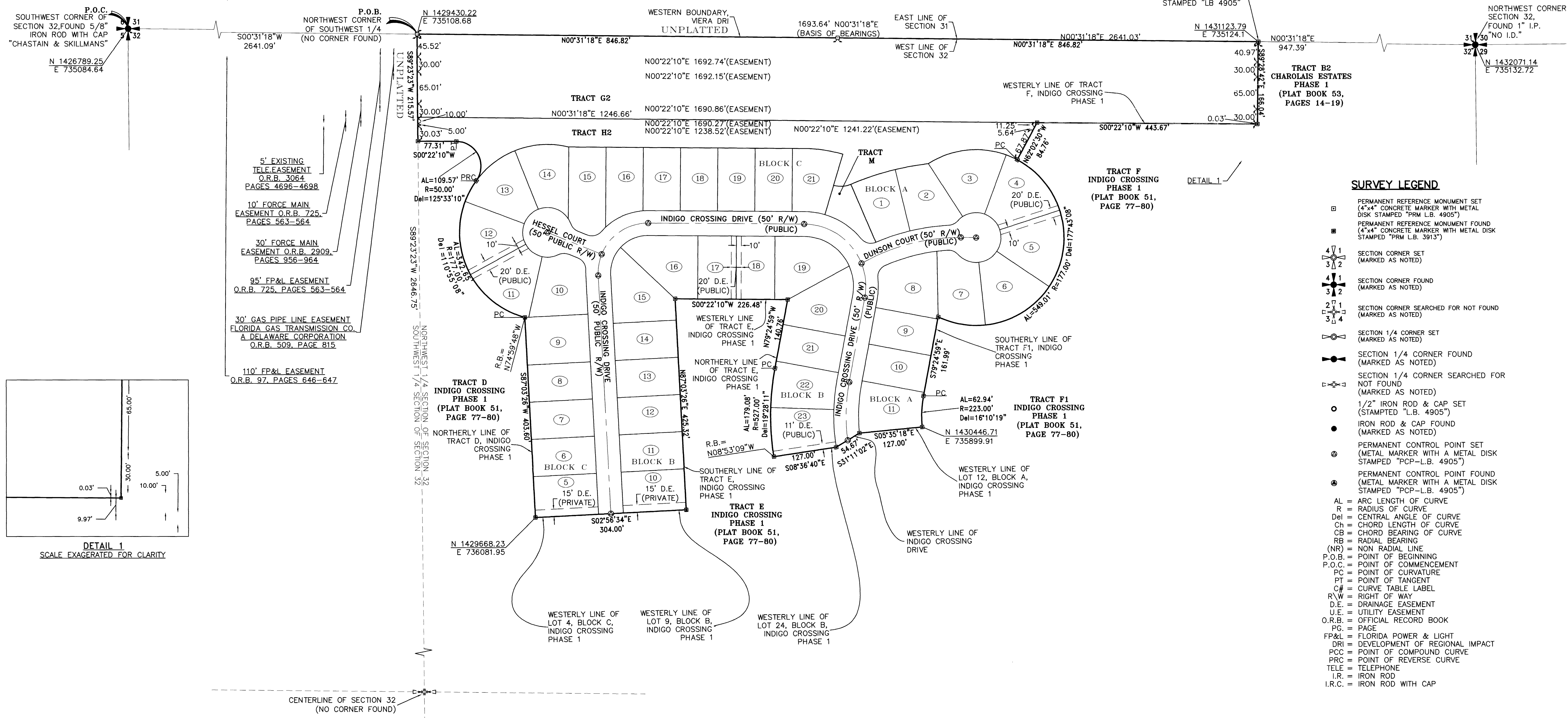
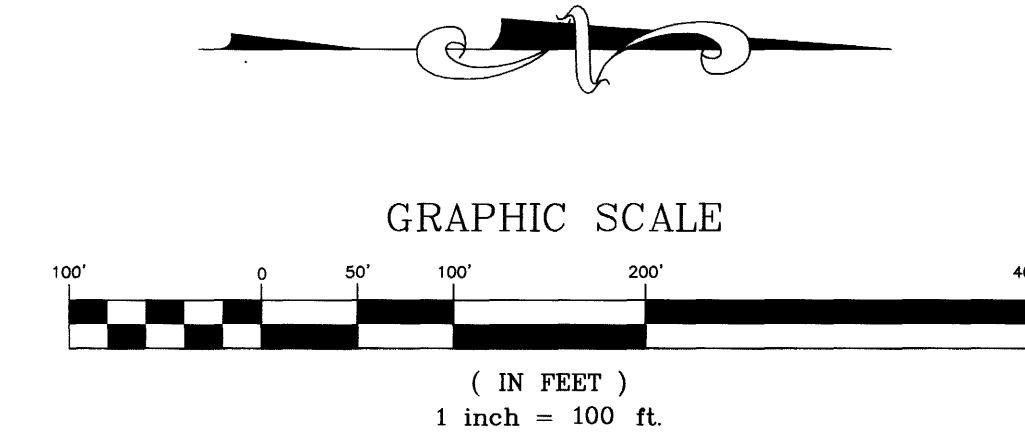
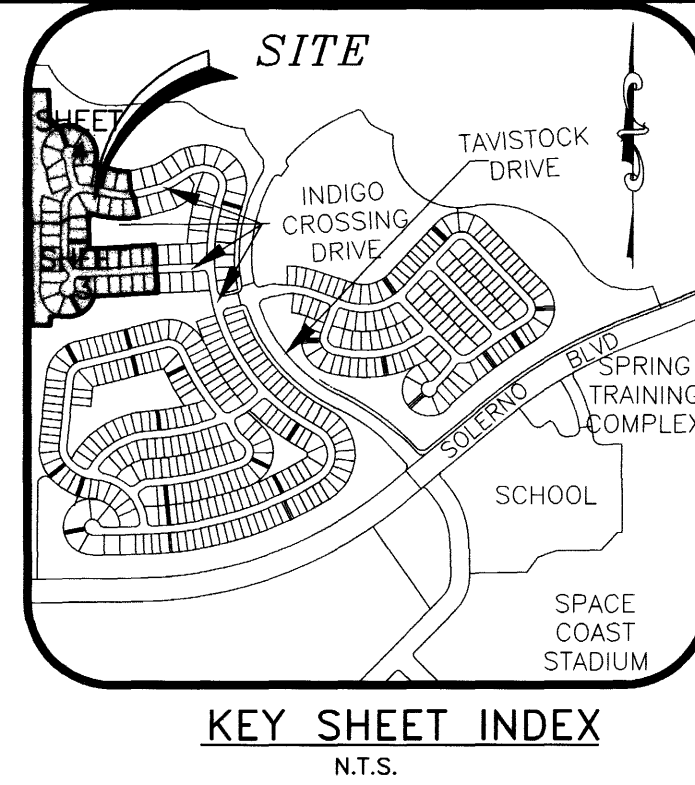
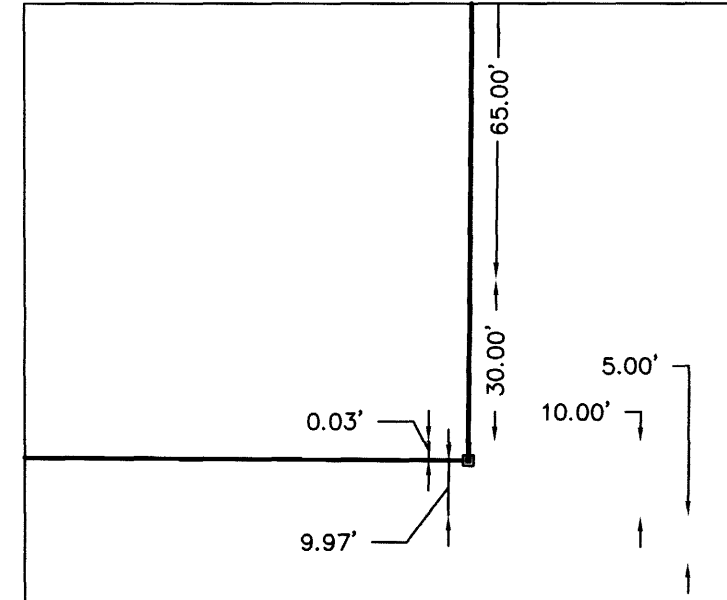


INDIGO CROSSING - PHASE 3

VIERA CENTRAL P.U.D. - A PORTION OF PARCEL 4
 SECTION 32, TOWNSHIP 25 SOUTH, RANGE 36 EAST
 VIERA, BREVARD COUNTY, FLORIDA



5' EXISTING TELE. EASEMENT O.R.B. 3064 PAGES 4696-4698
 10' FORCE MAIN EASEMENT O.R.B. 725 PAGES 563-564
 30' FORCE MAIN EASEMENT O.R.B. 2909 PAGES 956-964
 95' FP&L EASEMENT O.R.B. 725 PAGES 563-564
 30' GAS PIPE LINE EASEMENT FLORIDA GAS TRANSMISSION CO. A DELAWARE CORPORATION O.R.B. 509, PAGE 815
 110' FP&L EASEMENT O.R.B. 97, PAGES 646-647



SURVEY LEGEND

- PERMANENT REFERENCE MONUMENT SET (4"x4" CONCRETE MARKER WITH METAL DISK STAMPED "PRM L.B. 4905")
- PERMANENT REFERENCE MONUMENT FOUND (4"x4" CONCRETE MARKER WITH METAL DISK STAMPED "PRM L.B. 3913")
- ⊕ SECTION CORNER SET (MARKED AS NOTED)
- ⊕ SECTION CORNER FOUND (MARKED AS NOTED)
- ⊕ SECTION CORNER SEARCHED FOR NOT FOUND (MARKED AS NOTED)
- ⊕ SECTION 1/4 CORNER SET (MARKED AS NOTED)
- ⊕ SECTION 1/4 CORNER FOUND (MARKED AS NOTED)
- ⊕ SECTION 1/4 CORNER SEARCHED FOR NOT FOUND (MARKED AS NOTED)
- 1/2" IRON ROD & CAP SET (STAMPED "L.B. 4905")
- IRON ROD & CAP FOUND (MARKED AS NOTED)
- ⊕ PERMANENT CONTROL POINT SET (METAL MARKER WITH A METAL DISK STAMPED "PCP-L.B. 4905")
- ⊕ PERMANENT CONTROL POINT FOUND (METAL MARKER WITH A METAL DISK STAMPED "PCP-L.B. 4905")
- AL = ARC LENGTH OF CURVE
- R = RADIUS OF CURVE
- Del = CENTRAL ANGLE OF CURVE
- Ch = CHORD LENGTH OF CURVE
- CB = CHORD BEARING OF CURVE
- RB = RADIAL BEARING
- (NR) = NON RADIAL LINE
- P.O.B. = POINT OF BEGINNING
- P.O.C. = POINT OF COMMENCEMENT
- PC = POINT OF CURVATURE
- PT = POINT OF TANGENT
- C# = CURVE TABLE LABEL
- R/W = RIGHT OF WAY
- D.E. = DRAINAGE EASEMENT
- U.E. = UTILITY EASEMENT
- O.R.B. = OFFICIAL RECORD BOOK
- PC = PAGE
- FP&L = FLORIDA POWER & LIGHT
- DRI = DEVELOPMENT OF REGIONAL IMPACT
- PCC = POINT OF COMPOUND CURVE
- PRC = POINT OF REVERSE CURVE
- TELE = TELEPHONE
- I.R. = IRON ROD
- I.R.C. = IRON ROD WITH CAP

THIS PLAT PREPARED BY
 CHARLES E. PORTER
 PROFESSIONAL LAND SURVEYOR
 FLORIDA CERTIFICATION No. 4257
 B.S.E. CONSULTANTS, INC. LB No. 4905

B.S.E. CONSULTANTS, INC.
 CONSULTING - ENGINEERING - LAND SURVEYING
 312 SOUTH HARBOR CITY BOULEVARD, SUITE 4
 MELBOURNE, FLORIDA PHONE: (321) 725-3674 FAX: (321) 723-1159
 CERTIFICATE OF BUSINESS AUTHORIZATION: 4892
 CERTIFICATE OF LAND SURVEYING BUSINESS AUTHORIZATION: LB0004905

DATE: 01/08/05
 NOTICE: THIS PLAT, AS RECORDED IN ITS GRAPHIC FORM, IS THE OFFICIAL DEPICTION OF THE SUBDIVIDED LANDS DESCRIBED HEREIN AND WILL IN NO CIRCUMSTANCES BE SUPPLANTED IN AUTHORITY BY ANY OTHER GRAPHIC OR DIGITAL FORM OF THE PLAT. THERE MAY BE ADDITIONAL RESTRICTIONS THAT ARE NOT RECORDED ON THIS PLAT THAT MAY BE FOUND IN THE PUBLIC RECORDS OF THIS COUNTY.

© 2004 B.S.E. CONSULTANTS, INC. H:\Projects\Folder\10690\Drawings\10690\308.dwg 7/12/2005 3:14:27 PM EDT