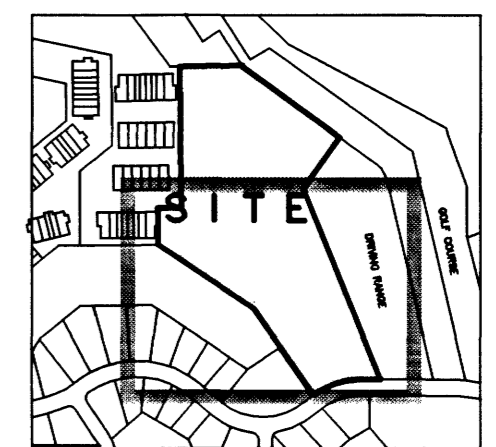
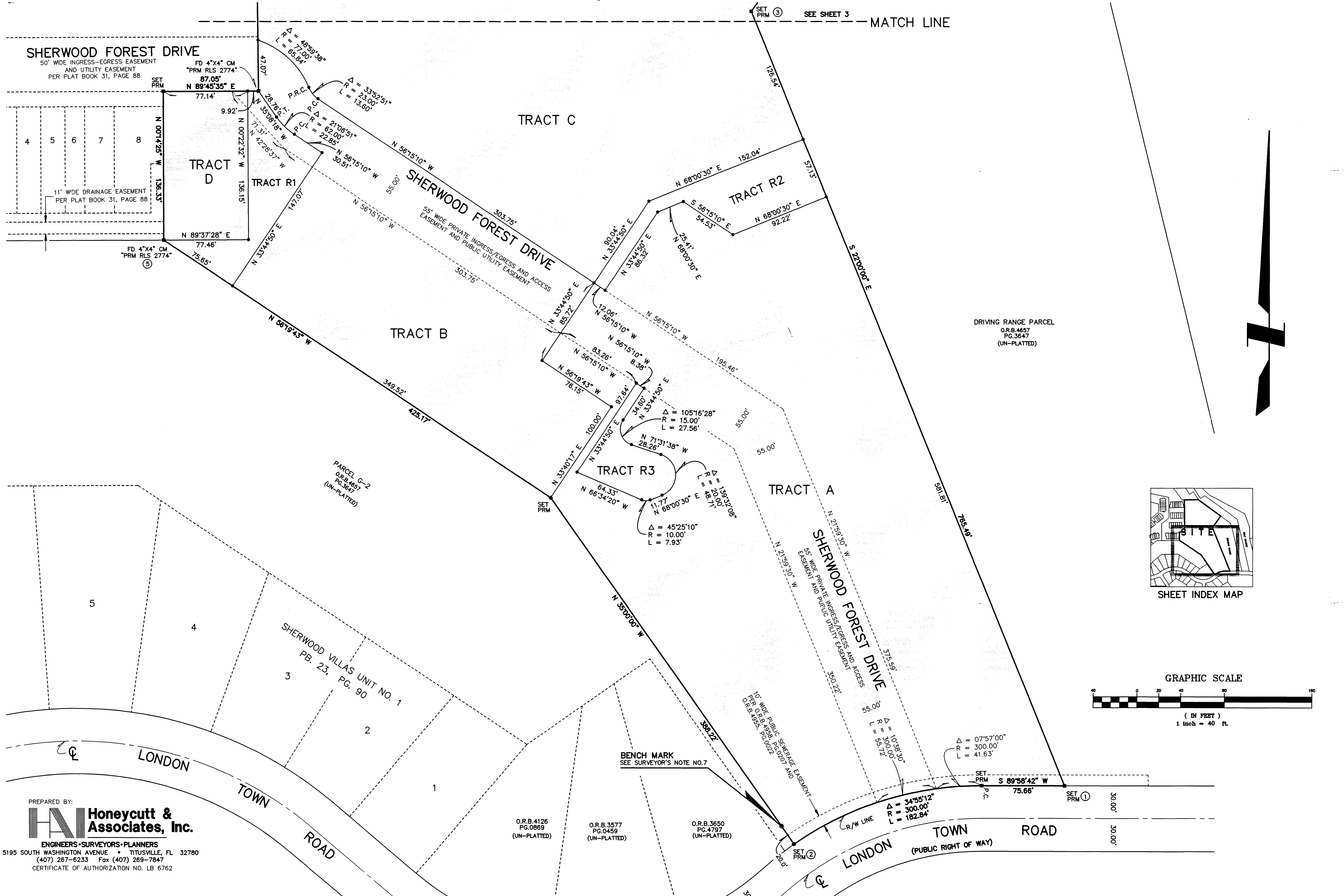


SHERWOOD VILLAS

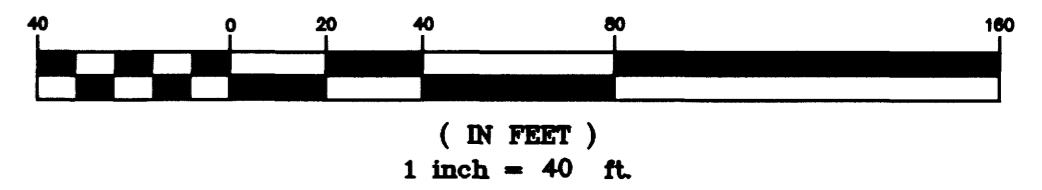
SHERWOOD FOREST P.U.D. II, STAGE 2, PHASE 2 AND STAGE 3

A SUBDIVISION LYING IN THE NORTHEAST 1/4 OF SECTION 24, TOWNSHIP 21 SOUTH, RANGE 34 EAST, BREVARD COUNTY, FLORIDA.



SHEET INDEX MAP

GRAPHIC SCALE



SHERWOOD FOREST DRIVE

50' WIDE INGRESS-EGRESS EASEMENT AND UTILITY EASEMENT PER PLAT BOOK 31, PAGE 88

FD 4"x4" CM "PRM RLS 2774" 87.05' N 89°45'35" E

TRACT D

N 00°14'25" W 136.33'

N 89°37'28" E 75.65'

FD 4"x4" CM "PRM RLS 2774"

77.46'

N 56°19'43" W

141.07'

N 33°44'50" E

141.07'

N 56°15'10" W

136.33'

N 00°14'25" W 136.33'

N 89°37'28" E 75.65'

N 56°19'43" W

141.07'

N 33°44'50" E

141.07'

N 56°15'10" W

136.33'

N 00°14'25" W 136.33'

N 89°37'28" E 75.65'

N 56°19'43" W

141.07'

N 33°44'50" E

141.07'

N 56°15'10" W

136.33'

N 00°14'25" W 136.33'

N 89°37'28" E 75.65'

N 56°19'43" W

141.07'

N 33°44'50" E

141.07'

N 56°15'10" W

136.33'

N 00°14'25" W 136.33'

N 89°37'28" E 75.65'

N 56°19'43" W

141.07'

N 33°44'50" E

141.07'

N 56°15'10" W

136.33'

N 00°14'25" W 136.33'

N 89°37'28" E 75.65'

N 56°19'43" W

141.07'

N 33°44'50" E

141.07'

N 56°15'10" W

136.33'

PREPARED BY:
Honeycutt & Associates, Inc.

ENGINEERS-SURVEYORS-PLANNERS
 5195 SOUTH WASHINGTON AVENUE • TITUSVILLE, FL 32780
 (407) 267-6233 Fax (407) 269-7847
 CERTIFICATE OF AUTHORIZATION NO. LB 6762

O.R.B. 4126
 PG. 0869
 (UN-PLATTED)

O.R.B. 3577
 PG. 0459
 (UN-PLATTED)

O.R.B. 3650
 PG. 4797
 (UN-PLATTED)