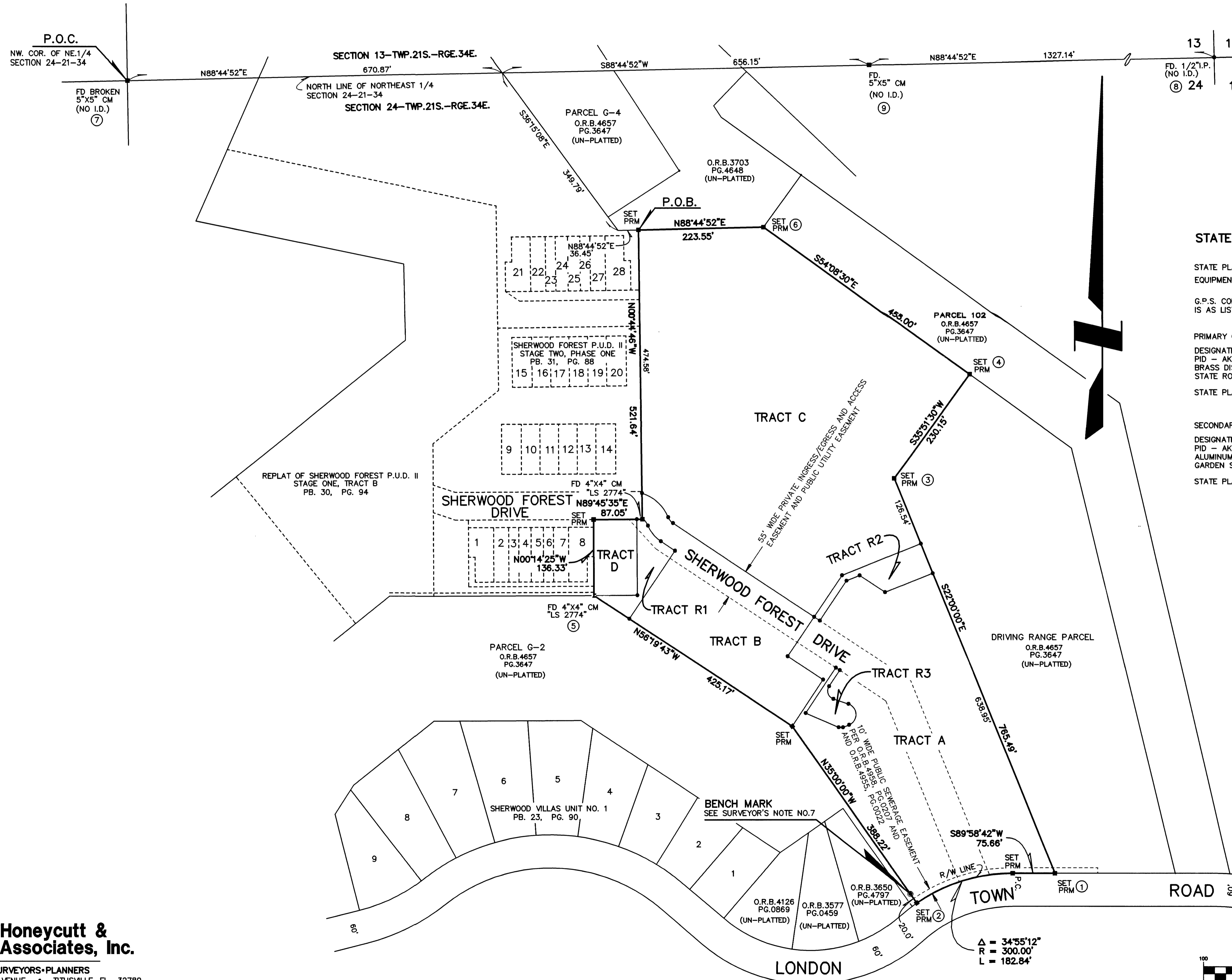


SHERWOOD VILLAS

SHERWOOD FOREST P.U.D. II, STAGE 2, PHASE 2 AND STAGE 3

A SUBDIVISION LYING IN THE NORTHEAST 1/4 OF SECTION 24, TOWNSHIP 21 SOUTH, RANGE 34 EAST, BREVARD COUNTY, FLORIDA.



STATE PLANE COORDINATE REFERENCE DATA:

STATE PLANE COORDINATES SHOWN BELOW ESTABLISHED BY G.P.S. REAL TIME KINEMATIC EQUIPMENT AND PROCEDURE:

G.P.S. CONTROL STATION MONUMENTATION USED IN STATE PLANE COORDINATE DETERMINATION IS AS LISTED BELOW:

PRIMARY CONTROL STATION:

DESIGNATION - 195 73 B17
 PID - AK5214
 BRASS DISK IN TOP OF ROUND CONCRETE MONUMENT LOCATED ON I-95 OVERPASS OVER STATE ROAD NO 46 IN MEDIAN NEAR SOUTH END OF BRIDGE.
 STATE PLANE COORDINATES: NAD 83(1990) NORTH: 1,574,865.03 EAST: 687,991.70

SECONDARY CONTROL STATION:

DESIGNATION - BREVARD GPS 1058
 PID - AK7507
 ALUMINUM ALLOY ROD ACCESSED THROUGH ACCESS COVER (LID) ON I-95 OVERPASS OVER GARDEN STREET (STATE ROAD NO 406) IN MEDIAN NEAR SOUTH END OF BRIDGE.
 STATE PLANE COORDINATES: NAD 83(1990) NORTH: 1,556,694.58 EAST: 703,907.06

STATE PLANE COORDINATE TABLE

CORNER NUMBER	EASTING	NORTHING	SCALE FACTOR
1	698384.04	1570851.58	0.99994324
2	698136.60	1570797.87	0.99994322
3	698098.46	1571561.75	0.99994322
4	698233.57	1571748.05	0.99994323
5	697561.02	1571352.52	0.99994316
6	697865.26	1572015.16	0.99994319
7	696728.27	1572278.73	0.99994309
8	699381.72	1572332.41	0.99994334
9	698054.93	1572305.57	0.99994321

③ = TYPICAL CORNER IDENTIFIER ON MAP.

NOTE:
 THE ABOVE LISTED COORDINATES ARE NOT REPRESENTATIVE OF THE BEARINGS AND DISTANCES SHOWN ON THE FACE OF THIS PLAT. THEY ARE INTENDED TO SHOW THE LOCATION OF THIS PLAT IN FLORIDA STATE PLANE EAST ZONE NAD 1983 (1999) FOR BREVARD COUNTY G.I.S. DATA.

IT IS THE INTENT OF THE SURVEYOR THAT ANY SUBSEQUENT RE-SURVEYS OF THE TRACTS SHOWN ON THIS PLAT BE GOVERNED BY THE LOCATION OF THE MONUMENTATION SET PER THIS PLAT TOGETHER WITH THE COURSES AND DISTANCES SHOWN HEREON.

PREPARED BY:
Honeycutt & Associates, Inc.
 ENGINEERS • SURVEYORS • PLANNERS
 5195 SOUTH WASHINGTON AVENUE • TITUSVILLE, FL 32780
 (407) 267-6233 Fax (407) 269-7847
 CERTIFICATE OF AUTHORIZATION NO. LB 6762

