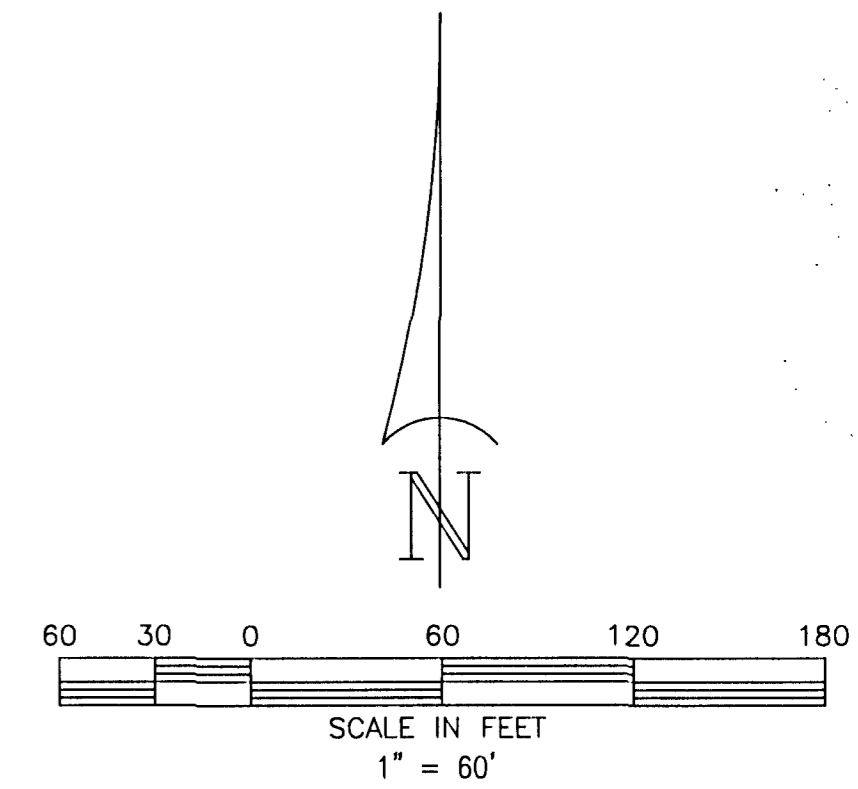


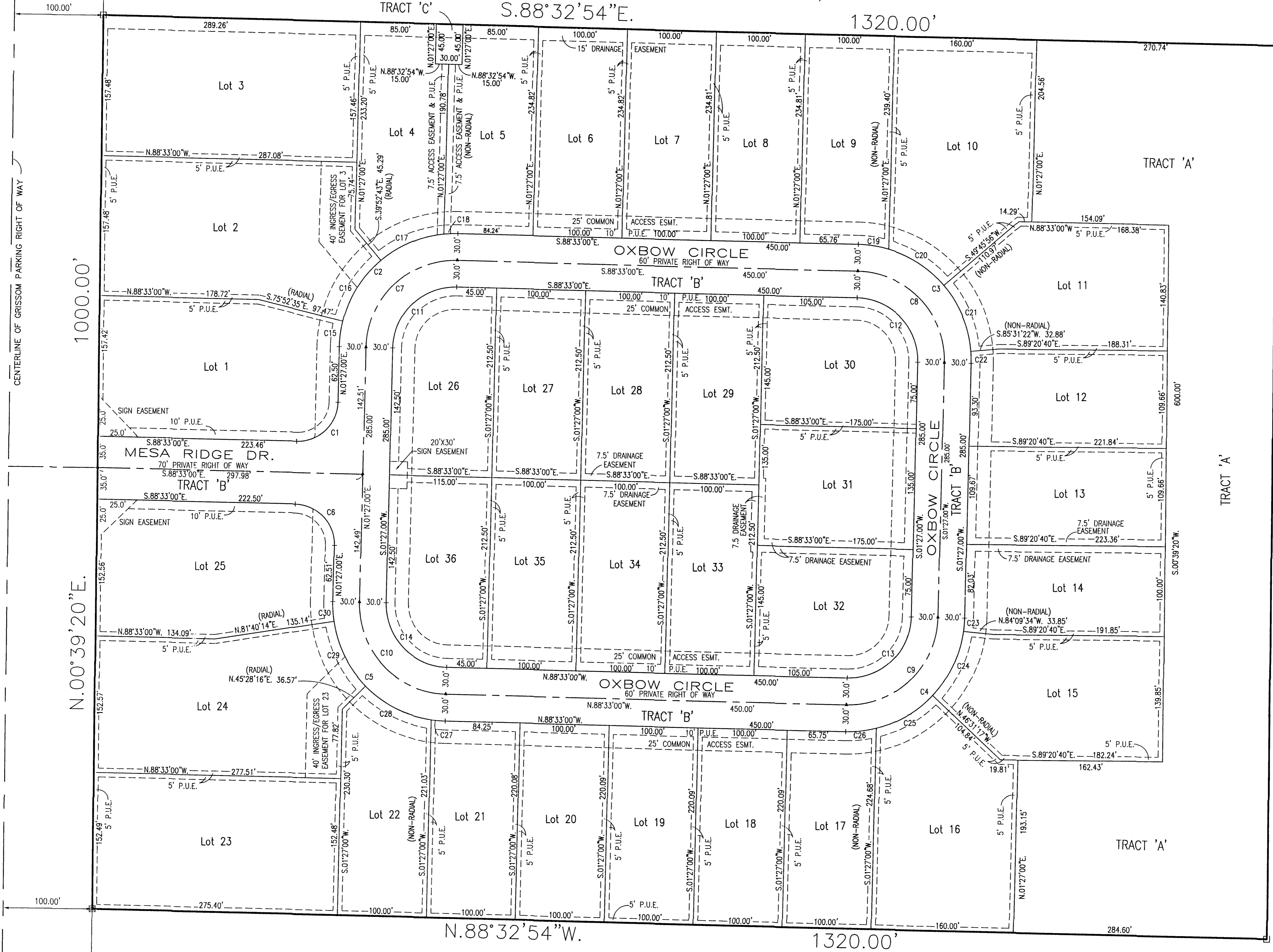
GRISSOM RIDGE

TAX PARCEL 255
 (LANDS PER O.R.B. 4365, PG. 2535)



NOTE:
 P.U.E. INDICATES "PUBLIC UTILITY EASEMENT"

GRISSOM PARKWAY
 200' PUBLIC RIGHT OF WAY



TAX PARCEL 1
 (LANDS PER O.R.B. 4476, PG. 2897)

CURVE NO.	RADIUS	DELTA	ARC	CHORD	CHORD BEARING
C1	45.00'	90°00'00"	70.69'	63.64'	N.46°27'00"E
C2	130.00'	90°00'00"	204.20'	183.85'	N.46°27'00"E
C3	130.00'	90°00'00"	204.20'	183.85'	N.43°33'00"E
C4	130.00'	90°00'00"	204.20'	183.85'	S.46°27'00"W
C5	130.00'	90°00'00"	204.20'	183.85'	N.43°33'00"W
C6	45.00'	90°00'00"	70.69'	63.64'	N.43°33'00"W
C7	100.00'	90°00'00"	157.08'	141.42'	N.46°27'00"E
C8	100.00'	90°00'00"	157.08'	141.42'	S.43°33'00"E
C9	100.00'	90°00'00"	157.08'	141.42'	N.46°27'00"E
C10	100.00'	90°00'00"	157.08'	141.42'	S.43°33'00"E
C11	70.00'	90°00'00"	109.96'	98.99'	S.46°27'00"E
C12	70.00'	90°00'00"	109.96'	98.99'	S.43°33'00"E
C13	70.00'	90°00'00"	109.96'	98.99'	S.46°27'00"W
C14	70.00'	90°00'00"	109.96'	98.99'	N.43°33'00"W
C15	130.00'	12°40'26"	28.76'	28.70'	N.07°47'13"E
C16	130.00'	35°59'51"	81.67'	80.34'	S.32°07'22"W
C17	130.00'	34°22'03"	77.98'	76.82'	S.67°18'19"W
C18	130.00'	06°57'40"	15.79'	15.78'	S.87°58'10"W
C19	130.00'	15°16'23"	34.65'	34.55'	N.80°54'49"W
C20	130.00'	33°02'41"	74.97'	73.94'	N.56°45'16"W
C21	130.00'	35°45'15"	81.13'	79.82'	N.22°21'18"W
C22	130.00'	05°55'40"	13.45'	13.44'	N.01°30'50"W
C23	130.00'	06°35'35"	14.96'	14.96'	N.04°44'47"E
C24	130.00'	35°26'02"	80.40'	79.12'	N.25°45'36"E
C25	130.00'	32°41'51"	74.19'	73.19'	N.59°49'33"E
C26	130.00'	15°16'38"	34.65'	34.55'	N.83°48'44"E
C27	130.00'	06°57'31"	15.79'	15.78'	S.85°04'14"E
C28	130.00'	37°03'45"	84.09'	82.63'	S.63°03'36"E
C29	130.00'	36°11'58"	82.13'	80.77'	S.26°25'45"E
C30	130.00'	09°46'46"	22.19'	22.16'	S.03°26'23"E

Campbell SURVEYING AND MAPPING
 OF BREVARD, INC.
 3525 N. COURTENAY PARKWAY - SUITE 1
 MAILING ADDRESS: P.O. BOX 542148
 MERRITT ISLAND, FL 32954 PHONE (321) 453-5820