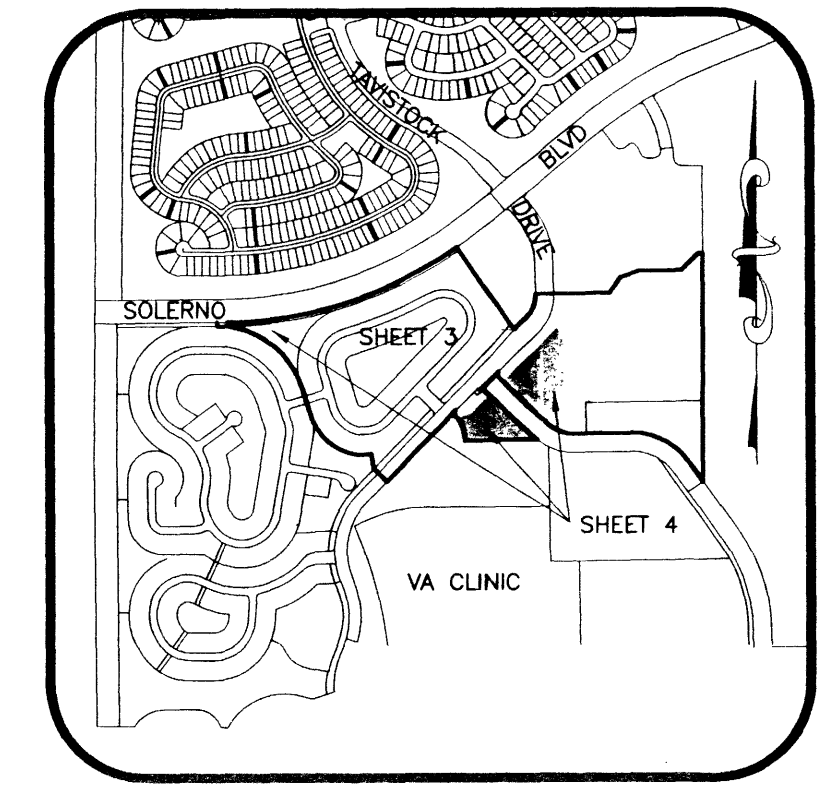


SUNSTONE SUBDIVISION - PHASE 1

A PORTION OF PARCEL 4 VIERA CENTRAL P.U.D. AND BEING A PORTION OF SECTION 32, TOWNSHIP 25 SOUTH, RANGE 36 EAST AND A PORTION OF SECTION 5, TOWNSHIP 26 SOUTH, RANGE 36 EAST VIERA, BREVARD COUNTY, FLORIDA

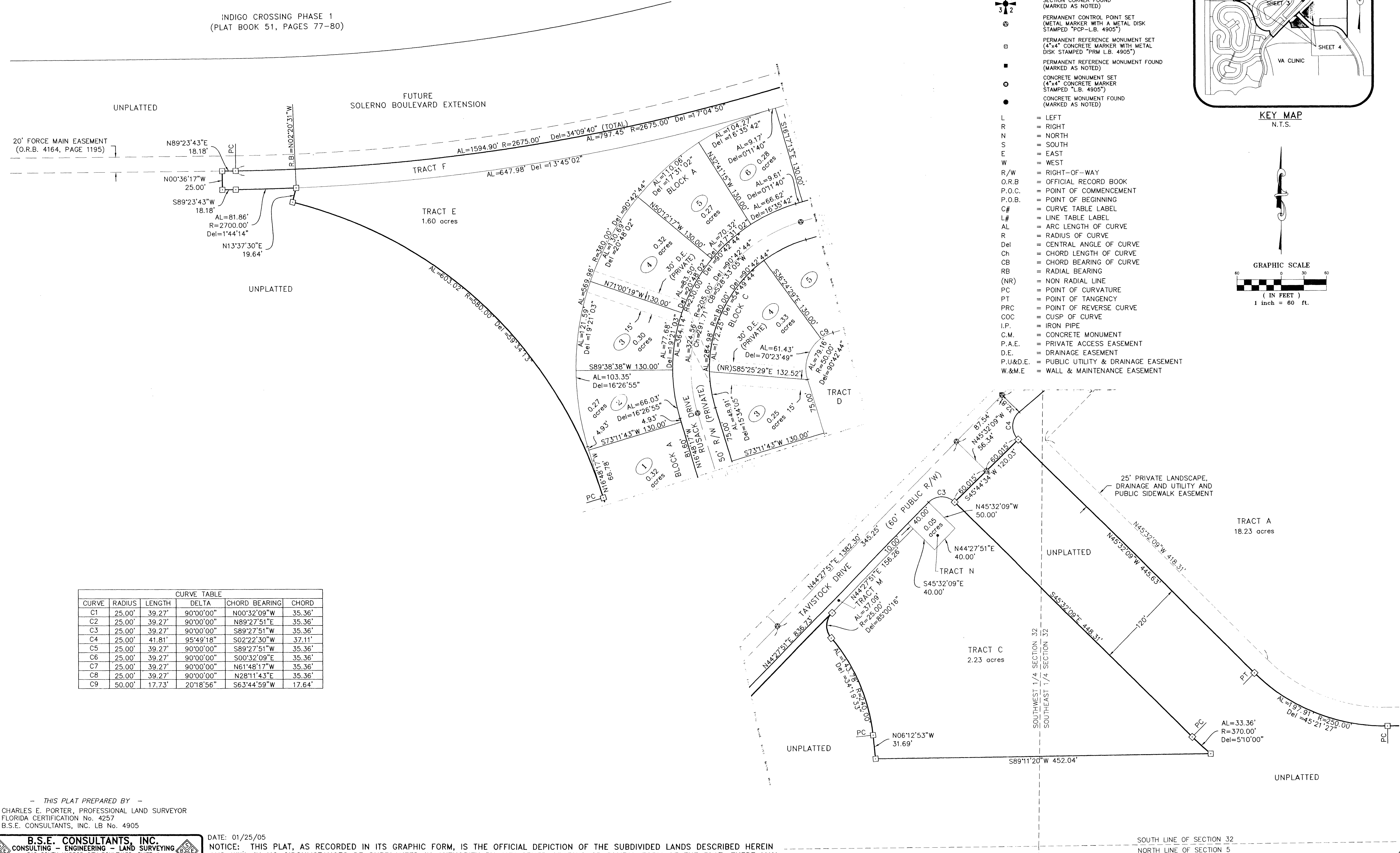
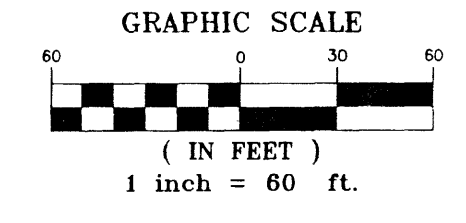
PLAT BOOK 53, PAGE 10
SHEET 4 OF 4
SECTION 32, TWP. 25 SOUTH, RANGE 36 EAST AND
SECTION 5, TWP. 26 SOUTH, RANGE 36 EAST

INDIGO CROSSING PHASE 1
(PLAT BOOK 51, PAGES 77-80)



KEY MAP
N.T.S.

- LEGEND**
- SECTION CORNER FOUND (MARKED AS NOTED)
 - PERMANENT CONTROL POINT SET (METAL MARKER WITH A METAL DISK STAMPED "PCP-L.B. 4905")
 - PERMANENT REFERENCE MONUMENT SET (4"x4" CONCRETE MARKER WITH METAL DISK STAMPED "PRM L.B. 4905")
 - PERMANENT REFERENCE MONUMENT FOUND (MARKED AS NOTED)
 - CONCRETE MONUMENT SET (4"x4" CONCRETE MARKER STAMPED "L.B. 4905")
 - CONCRETE MONUMENT FOUND (MARKED AS NOTED)
 - L = LEFT
 - R = RIGHT
 - N = NORTH
 - S = SOUTH
 - E = EAST
 - W = WEST
 - R/W = RIGHT-OF-WAY
 - O.R.B. = OFFICIAL RECORD BOOK
 - P.O.C. = POINT OF COMMENCEMENT
 - P.O.B. = POINT OF BEGINNING
 - C# = CURVE TABLE LABEL
 - L# = LINE TABLE LABEL
 - AL = ARC LENGTH OF CURVE
 - R = RADIUS OF CURVE
 - Del = CENTRAL ANGLE OF CURVE
 - Ch = CHORD LENGTH OF CURVE
 - CB = CHORD BEARING OF CURVE
 - RB = RADIAL BEARING
 - (NR) = NON RADIAL LINE
 - PC = POINT OF CURVATURE
 - PT = POINT OF TANGENCY
 - PRC = POINT OF REVERSE CURVE
 - COC = CUSP OF CURVE
 - I.P. = IRON PIPE
 - C.M. = CONCRETE MONUMENT
 - P.A.E. = PRIVATE ACCESS EASEMENT
 - D.E. = DRAINAGE EASEMENT
 - P.U.&D.E. = PUBLIC UTILITY & DRAINAGE EASEMENT
 - W.&M.E. = WALL & MAINTENANCE EASEMENT



CURVE TABLE					
CURVE	RADIUS	LENGTH	DELTA	CHORD BEARING	CHORD
C1	25.00'	39.27'	90°00'00"	N00°32'09"W	35.36'
C2	25.00'	39.27'	90°00'00"	N89°27'51"E	35.36'
C3	25.00'	39.27'	90°00'00"	S89°27'51"W	35.36'
C4	25.00'	41.81'	95°49'18"	S02°22'30"W	37.11'
C5	25.00'	39.27'	90°00'00"	S89°27'51"W	35.36'
C6	25.00'	39.27'	90°00'00"	S00°32'09"E	35.36'
C7	25.00'	39.27'	90°00'00"	N61°48'17"W	35.36'
C8	25.00'	39.27'	90°00'00"	N28°11'43"E	35.36'
C9	50.00'	17.73'	20°18'56"	S63°44'59"W	17.64'

THIS PLAT PREPARED BY -
CHARLES E. PORTER, PROFESSIONAL LAND SURVEYOR
FLORIDA CERTIFICATION No. 4257
B.S.E. CONSULTANTS, INC. LB No. 4905

B.S.E. CONSULTANTS, INC.
CONSULTING - ENGINEERING - LAND SURVEYING
312 SOUTH HARBOR CITY BOULEVARD, SUITE 4
MELBOURNE, FLORIDA PHONE: (321) 725-3674 FAX: (321) 723-1159
CERTIFICATE OF BUSINESS AUTHORIZATION: 4905
CERTIFICATE OF LAND SURVEYING BUSINESS AUTHORIZATION: LB0004905

DATE: 01/25/05
NOTICE: THIS PLAT, AS RECORDED IN ITS GRAPHIC FORM, IS THE OFFICIAL DEPICTION OF THE SUBDIVIDED LANDS DESCRIBED HEREIN AND WILL IN NO CIRCUMSTANCES BE SUPPLANTED IN AUTHORITY BY ANY OTHER GRAPHIC OR DIGITAL FORM OF THE PLAT. THERE MAY BE ADDITIONAL RESTRICTIONS THAT ARE NOT RECORDED ON THIS PLAT THAT MAY BE FOUND IN THE PUBLIC RECORDS OF THIS COUNTY.

SOUTH LINE OF SECTION 32
NORTH LINE OF SECTION 5

© 2005 B.S.E. CONSULTANTS, INC. H:\Projects\Folder\10758304\Drawings\3000meta\10758303-304.dwg 6/24/2005 4:32:57 PM EDT