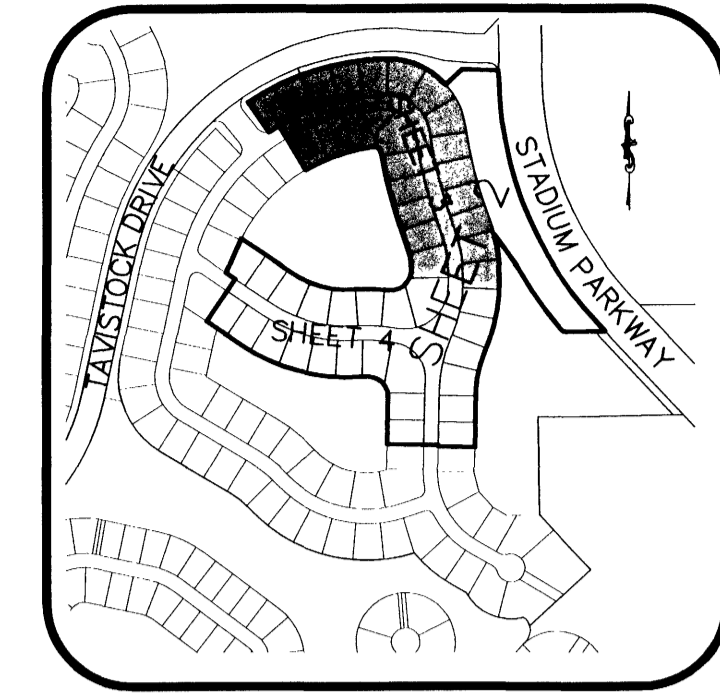


# COLFAX LANDING - PHASE 2

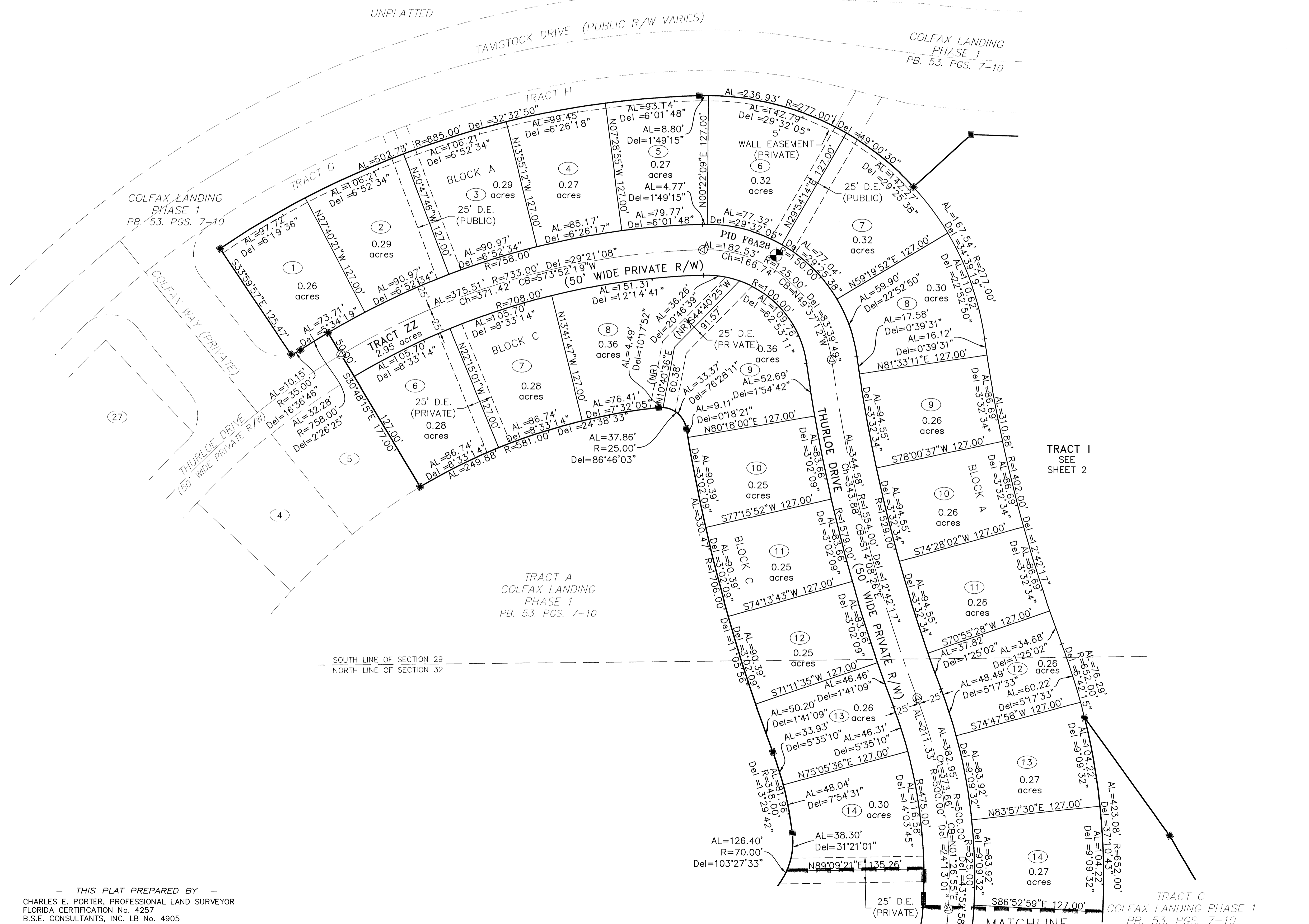
## VIERA CENTRAL P.U.D. - A PORTION OF PARCEL 4

### BEING A PORTION OF SECTIONS 29 & 32, TOWNSHIP 25 SOUTH, RANGE 36 EAST

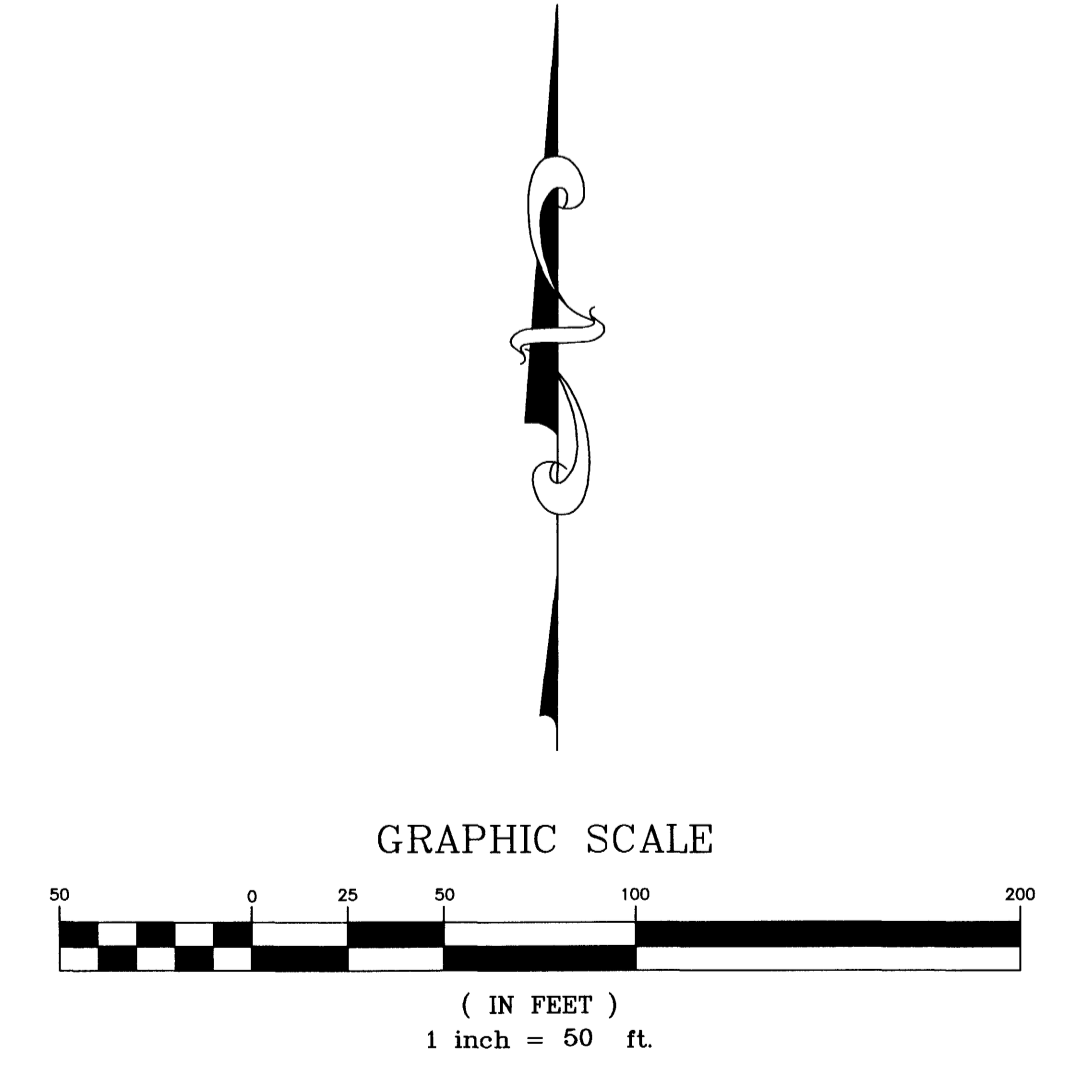
#### VIERA, BREVARD COUNTY, FLORIDA



KEY MAP  
N.T.S.



- LEGEND**
- = PERMANENT REFERENCE MONUMENT SET (4"x4" CONCRETE MARKER WITH METAL DISK STAMPED "PRM L.B. 4905")
  - = PERMANENT REFERENCE MONUMENT FOUND (STAMPED "PRM L.B. 4905", UNLESS NOTED OTHERWISE)
  - ⊙ = CONCRETE MONUMENT SET (4"x4" CONCRETE MARKER STAMPED "L.B. 4905")
  - = CONCRETE MONUMENT FOUND (STAMPED "PRM L.B. 4905", UNLESS NOTED OTHERWISE)
  - ⊕ = SECTION CORNER FOUND (MARKED AS NOTED)
  - = 1/2" IRON ROD & CAP SET (STAMPED "L.B. 4905")
  - = IRON ROD & CAP FOUND (MARKED AS NOTED)
  - ⊙ = PERMANENT CONTROL POINT SET (METAL MARKER WITH A METAL DISK STAMPED "PCP-L.B. 4905")
  - ⊕ = PERMANENT CONTROL POINT FOUND (MARKED AS NOTED)
  - ⊕ = BENCHMARK FOUND (MARKED AS NOTED)
  - IR = IRON ROD
  - CM = CONCRETE MONUMENT
  - AL = ARC LENGTH OF CURVE
  - R = RADIUS OF CURVE
  - Del = CENTRAL ANGLE OF CURVE
  - Ch = CHORD LENGTH OF CURVE
  - CB = CHORD BEARING OF CURVE
  - RB = RADIAL BEARING FOR NON-TANGENT ARCS AND LINES
  - (NR) = NON RADIAL LINE
  - N.T.S. = NOT TO SCALE
  - P.O.B. = POINT OF BEGINNING
  - P.O.C. = POINT OF COMMENCEMENT
  - PT = POINT OF CURVATURE
  - PT = POINT OF TANGENCY
  - PCC = POINT OF COMPOUND CURVE
  - PRC = POINT OF REVERSE CURVE
  - COC = POINT OF CUSP OF CURVE
  - C# = CURVE TABLE LABEL
  - L# = LINE TABLE LABEL
  - R/W = RIGHT OF WAY
  - D.E. = DRAINAGE EASEMENT
  - U.E. = UTILITY EASEMENT
  - O.R.B. = OFFICIAL RECORD BOOK



THIS PLAT PREPARED BY  
 CHARLES E. PORTER, PROFESSIONAL LAND SURVEYOR  
 FLORIDA CERTIFICATION No. 4257  
 B.S.E. CONSULTANTS, INC. LB No. 4905

**B.S.E. CONSULTANTS, INC.**  
 CONSULTING - ENGINEERING - LAND SURVEYING  
 312 SOUTH HARBOR CITY BOULEVARD, SUITE 4  
 MELBOURNE, FLORIDA PHONE: (321) 725-3674 FAX: (321) 723-1159  
CERTIFICATE OF BUSINESS AUTHORIZATION: 4905  
 CERTIFICATE OF LAND SURVEYING BUSINESS AUTHORIZATION: LB0004905

DATE: 4/06/05  
 NOTICE: THIS PLAT, AS RECORDED IN ITS GRAPHIC FORM, IS THE OFFICIAL DEPICTION OF THE SUBDIVIDED LANDS DESCRIBED HEREIN AND WILL IN NO CIRCUMSTANCES BE SUPPLANTED IN AUTHORITY BY ANY OTHER GRAPHIC OR DIGITAL FORM OF THE PLAT. THERE MAY BE ADDITIONAL RESTRICTIONS THAT ARE NOT RECORDED ON THIS PLAT THAT MAY BE FOUND IN THE PUBLIC RECORDS OF THIS COUNTY.

MATCHLINE  
 (SEE SHEET 4)