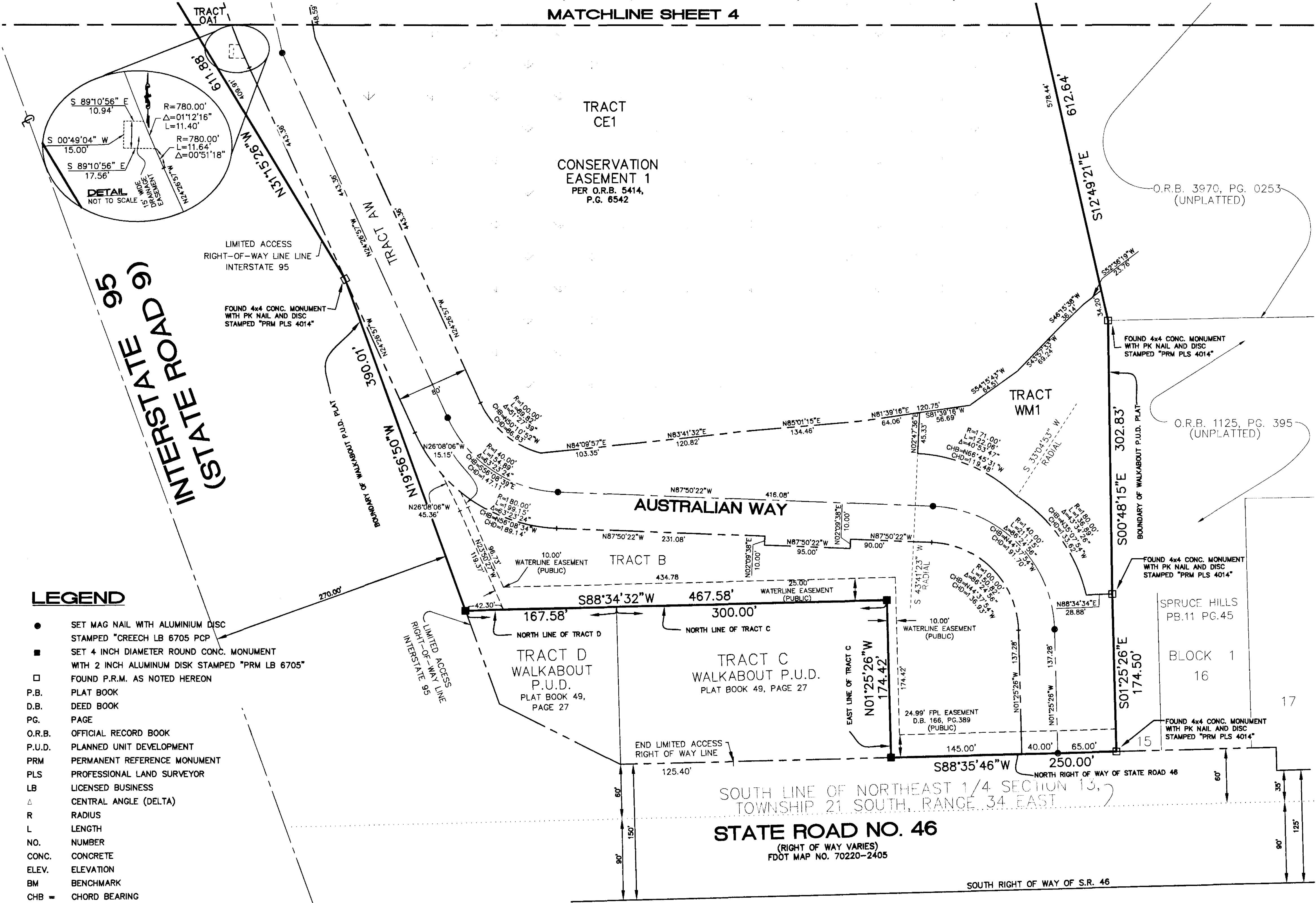


FITZROY REEF AT WALKABOUT

AUSTRALIAN WAY (POD 1) AND A PORTION OF POD 2

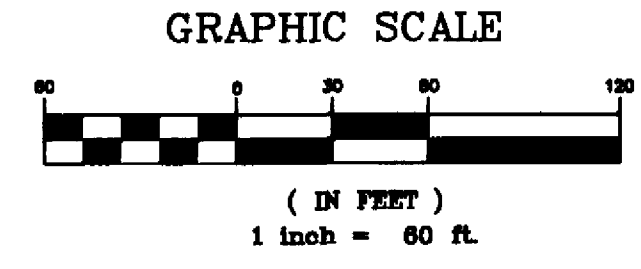
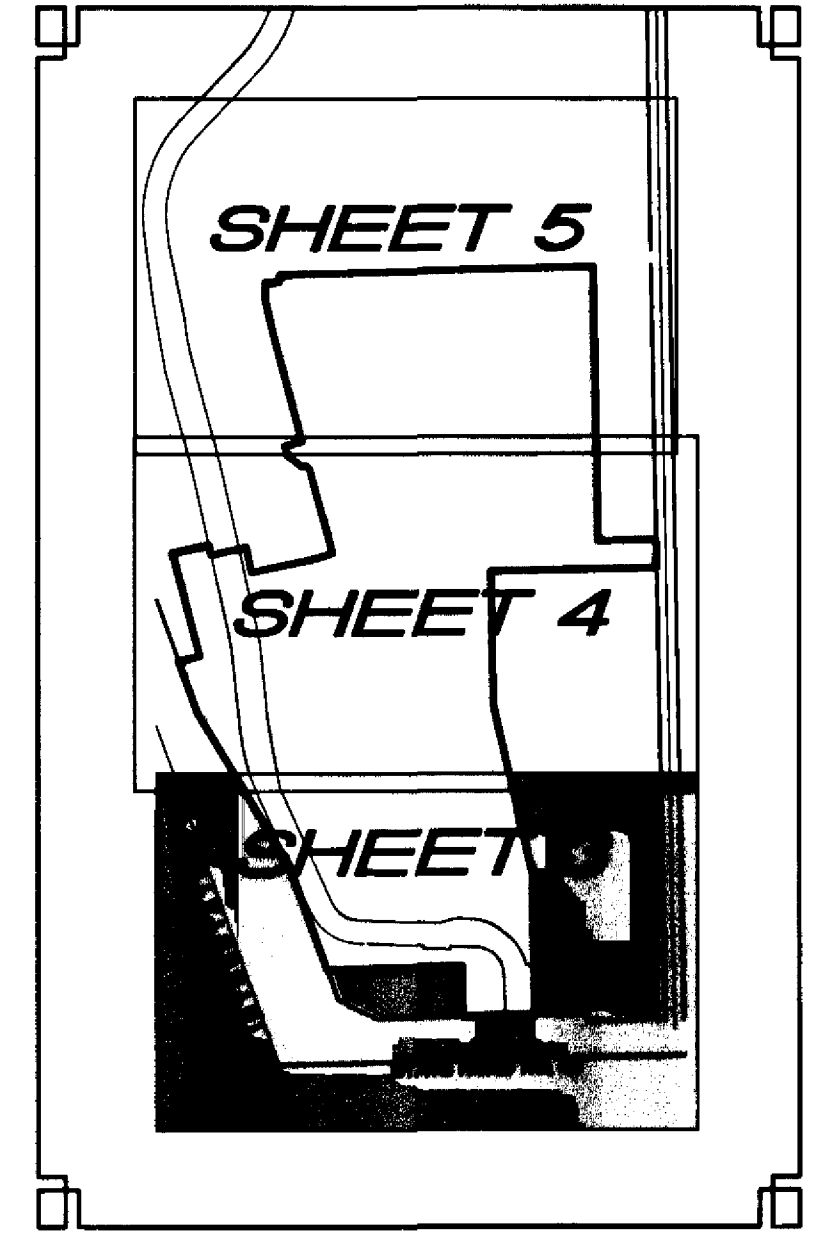
A REPLAT OF TRACTS B, E, AND A PORTION OF TRACT A, F AND J WALKABOUT P.U.D. AS RECORDED IN PLAT BOOK 49, PAGE 27, OF THE PUBLIC RECORDS OF BREVARD COUNTY, FLORIDA, LYING IN SECTIONS 13, TOWNSHIP 21 SOUTH, RANGE 34 EAST

MATCHLINE SHEET 4



LEGEND

- SET MAG NAIL WITH ALUMINIUM DISC STAMPED "CREECH LB 6705 PCP"
- SET 4 INCH DIAMETER ROUND CONC. MONUMENT WITH 2 INCH ALUMINIUM DISK STAMPED "PRM LB 6705"
- FOUND P.R.M. AS NOTED HEREON
- P.B. PLAT BOOK
- D.B. DEED BOOK
- PG. PAGE
- O.R.B. OFFICIAL RECORD BOOK
- P.U.D. PLANNED UNIT DEVELOPMENT
- PRM PERMANENT REFERENCE MONUMENT
- PLS PROFESSIONAL LAND SURVEYOR
- LB LICENSED BUSINESS
- Δ CENTRAL ANGLE (DELTA)
- R RADIUS
- L LENGTH
- NO. NUMBER
- CONC. CONCRETE
- ELEV. ELEVATION
- BM BENCHMARK
- CHB = CHORD BEARING
- CHD = CHORD DISTANCE
- NTC NON-TANGENT CURVE
- P.O.C. POINT ON CURVE
- PT POINT OF TANGENT
- NGVD NATIONAL GEODETIC VERTICAL DATUM
- D.E. DRAINAGE EASEMENT
- ASSOC. ASSOCIATION
- FPL FLORIDA POWER AND LIGHT
- ℄ CENTERLINE
- RIGHT OF WAY
- BOUNDARY LINE
- - - EASEMENT LINE
- SECTION LINE
- SECTION CORNER



CREECH ENGINEERS, INC.
 CIVILIZATION ENGINEERS
 4450 WEST EAU GALLIE BLVD., MELBOURNE, FL 32934 (321) 255-5434
 2000 N.E. JENSEN BEACH BLVD., JENSEN BEACH, FLORIDA 34957 (772) 283-1413
 707 EAST PARK AVENUE, TALLAHASSEE, FL 32301 (850) 841-1705
BOARD OF PROFESSIONAL ENGINEERS, CERTIFICATE OF AUTHORIZATION NUMBER 5139
 PROFESSIONAL SURVEYORS AND MAPPERS, AMENDED CERTIFICATE NO. LB-0008705