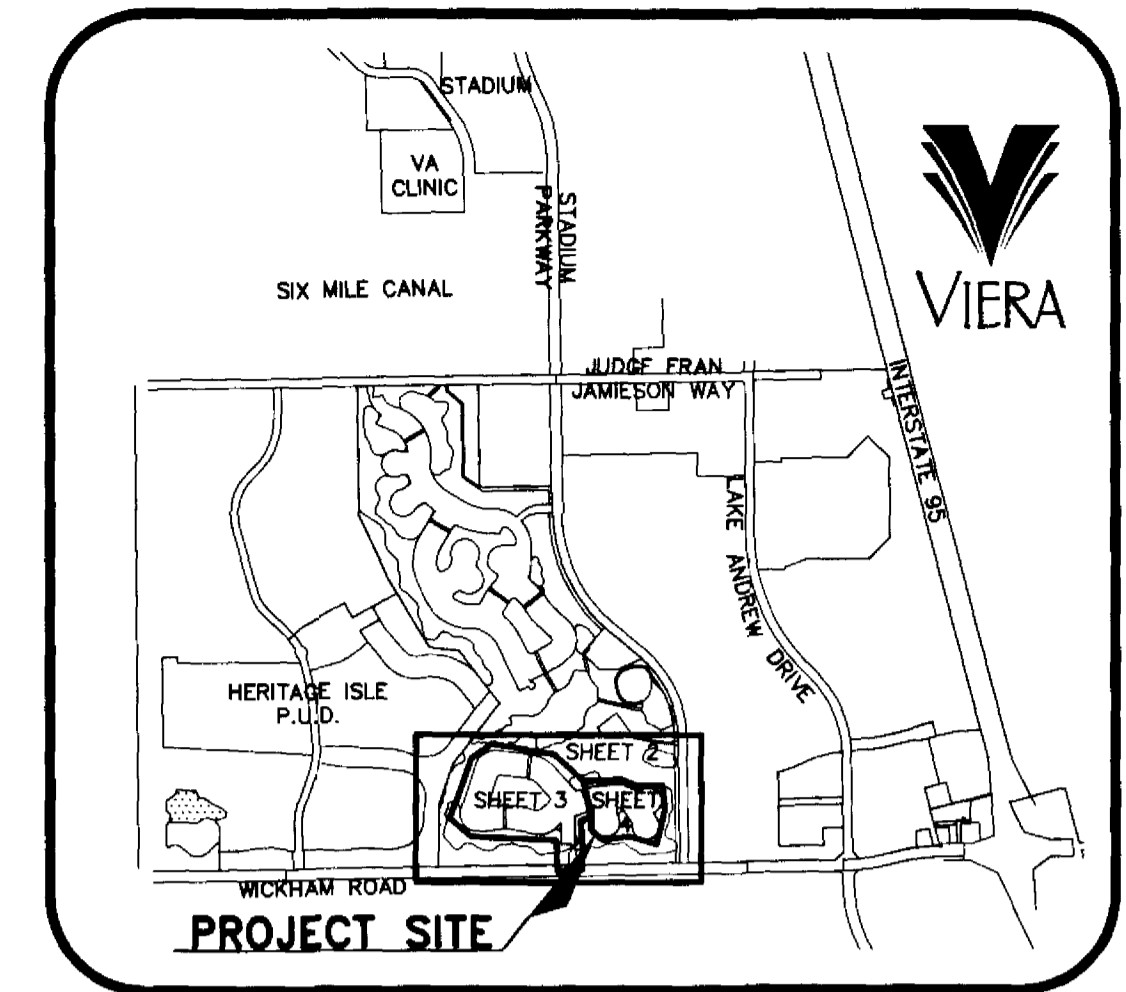
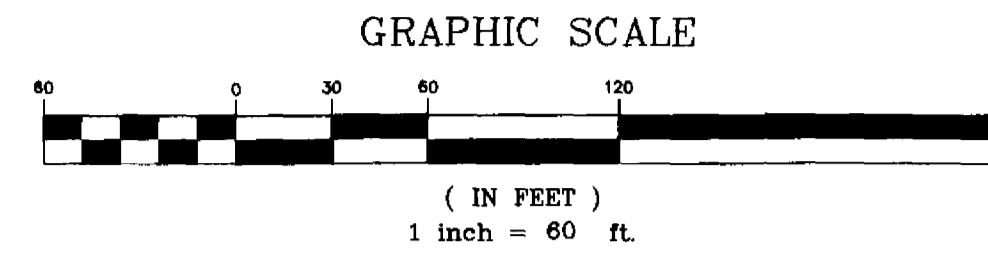


WYNDHAM AT DURAN

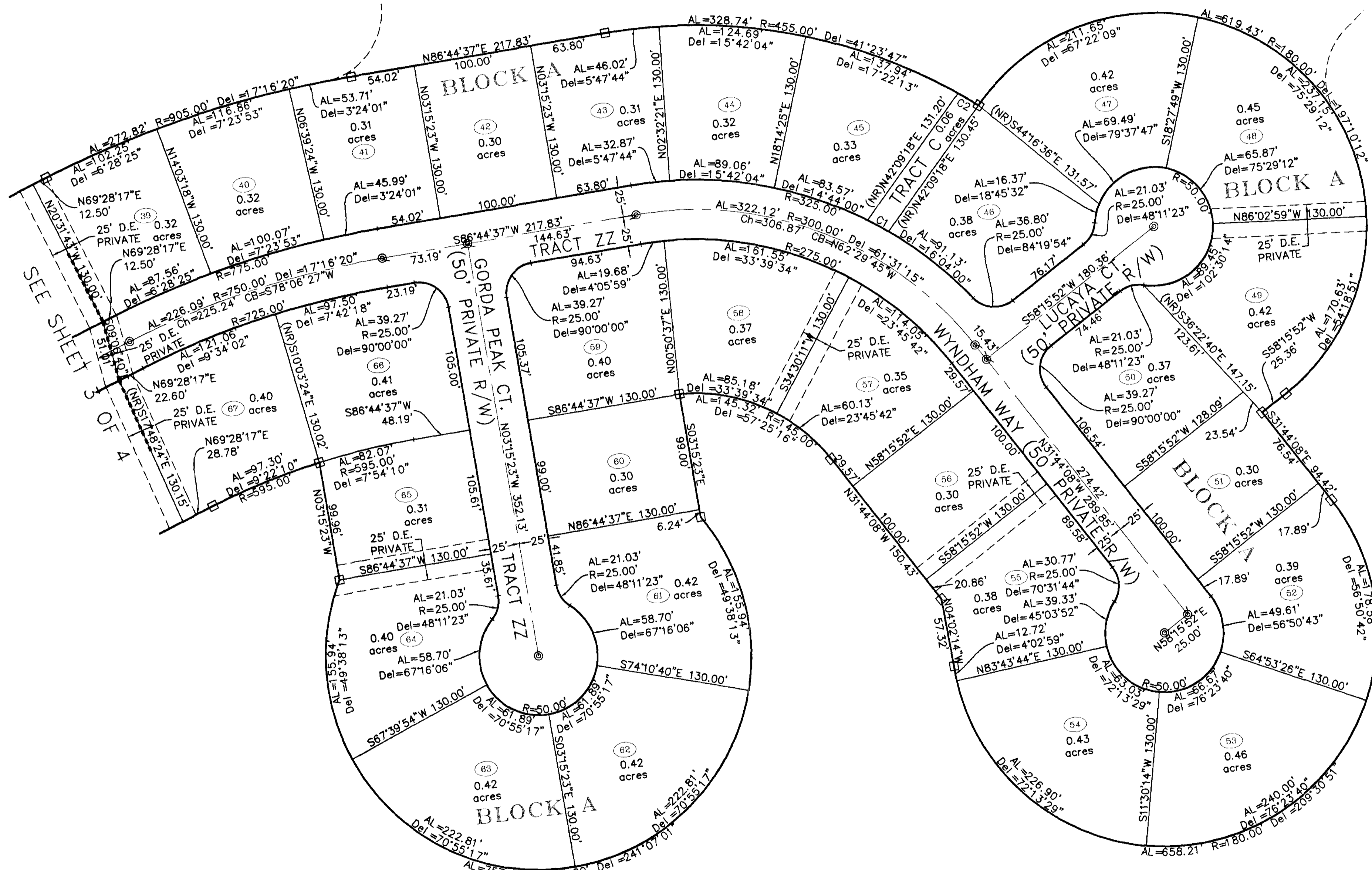
REPLAT OF TRACT B AND A PORTION OF TRACT K OF DURAN GOLF CLUB AS RECORDED IN PLAT BOOK 51, PAGES 63-65
 A PORTION OF SECTIONS 8 AND 9, TOWNSHIP 26 SOUTH, RANGE 36 EAST
 VIERA, BREVARD COUNTY, FLORIDA



LOCATION MAP
 N.T.S.

- LEGEND
- ⊙ = PERMANENT CONTROL POINT - SET (METAL MARKER WITH A METAL DISK STAMPED "P.C.P.-LB 4905")
 - ⊠ = PERMANENT REFERENCE MONUMENT - SET (4"x4" CONCRETE MARKER WITH METAL DISK STAMPED "P.R.M.-LB 4905")
 - = PERMANENT REFERENCE MONUMENT - FOUND (4"x4" CONCRETE MARKER WITH METAL DISK STAMPED "P.R.M.-L.S. 3913" UNLESS NOTED OTHERWISE)
 - CM = CONCRETE MONUMENT
 - AL = ARC LENGTH OF CURVE
 - R = RADIUS OF CURVE
 - Del = CENTRAL ANGLE OF CURVE
 - Ch = CHORD LENGTH OF CURVE
 - CB = CHORD BEARING OF CURVE
 - RB = RADIAL BEARING
 - (NR) = NON-RADIAL LINE
 - P.O.B. = POINT OF BEGINNING
 - P.O.C. = POINT OF COMMENCEMENT
 - P.C. = POINT OF CURVATURE
 - CT = CURVE TABLE LABEL
 - L# = LINE TABLE LABEL
 - R/W = RIGHT OF WAY
 - D.E. = DRAINAGE EASEMENT
 - U.E. = UTILITY EASEMENT
 - P.U.E. = PRIVATE UTILITY EASEMENT
 - D.&A.E. = DRAINAGE AND ACCESS EASEMENT
 - O.R.B. = OFFICIAL RECORD BOOK
 - P.B. = PLAT BOOK
 - PGS. = PAGES

| CURVE TABLE | | | |
|-------------|---------|--------|----------|
| CURVE | RADIUS | LENGTH | DELTA |
| C1 | 325.00' | 20.17' | 3°33'22" |
| C2 | 455.00' | 20.09' | 2°31'46" |



2004 B.S.E. CONSULTANTS, INC. \Projects\Florida\10772\Drawings\500Plats\10772200-304.dwg 3/29/2005 4:33:47 PM EST

THIS PLAT PREPARED BY -
 CHARLES E. PORTER, PROFESSIONAL LAND SURVEYOR
 FLORIDA CERTIFICATION No. 4257
 B.S.E. CONSULTANTS, INC. LB No. 4905

B.S.E. CONSULTANTS, INC.
 CONSULTING - ENGINEERING - LAND SURVEYING
 312 SOUTH HARBOR CITY BOULEVARD, SUITE 4
 MELBOURNE, FLORIDA PHONE: (321) 725-3674 FAX: (321) 723-1159
CERTIFICATE OF BUSINESS AUTHORIZATION: 4905
 CERTIFICATE OF LAND SURVEYING BUSINESS AUTHORIZATION: LB0004905

NOTICE: THIS PLAT, AS RECORDED IN ITS GRAPHIC FORM, IS THE OFFICIAL DEPICTION OF THE SUBDIVIDED LANDS DESCRIBED HEREIN AND WILL IN NO CIRCUMSTANCES BE SUPPLANTED IN AUTHORITY BY ANY OTHER GRAPHIC OR DIGITAL FORM OF THE PLAT. THERE MAY BE ADDITIONAL RESTRICTIONS THAT ARE NOT RECORDED ON THIS PLAT THAT MAY BE FOUND IN THE PUBLIC RECORDS OF THIS COUNTY.