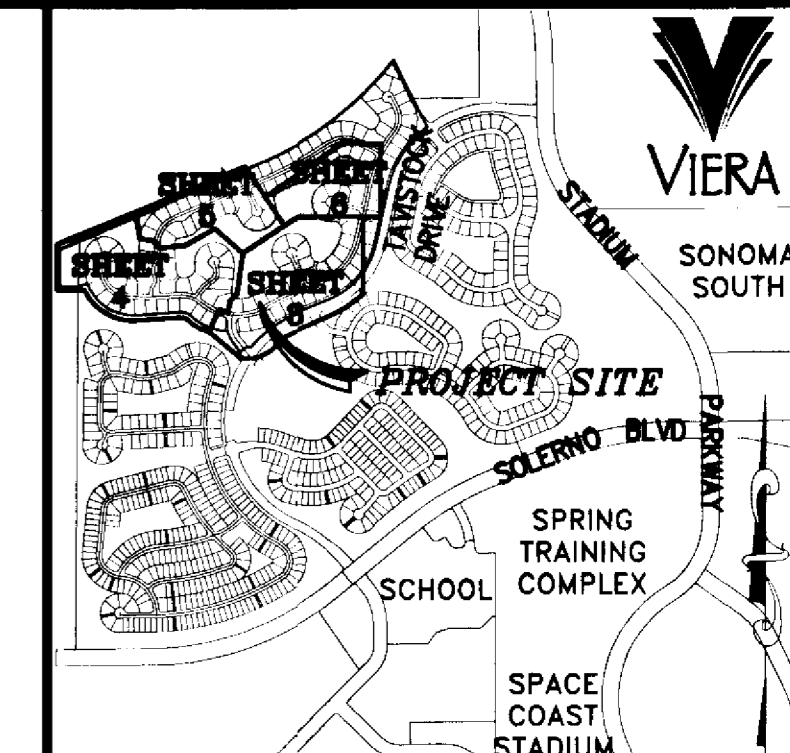


# CHAROLAIS ESTATES - PHASE 1

## A PORTION OF PARCEL 4 OF VIERA CENTRAL P.U.D.

### SECTION 29 & 32, TOWNSHIP 25 SOUTH, RANGE 36 EAST

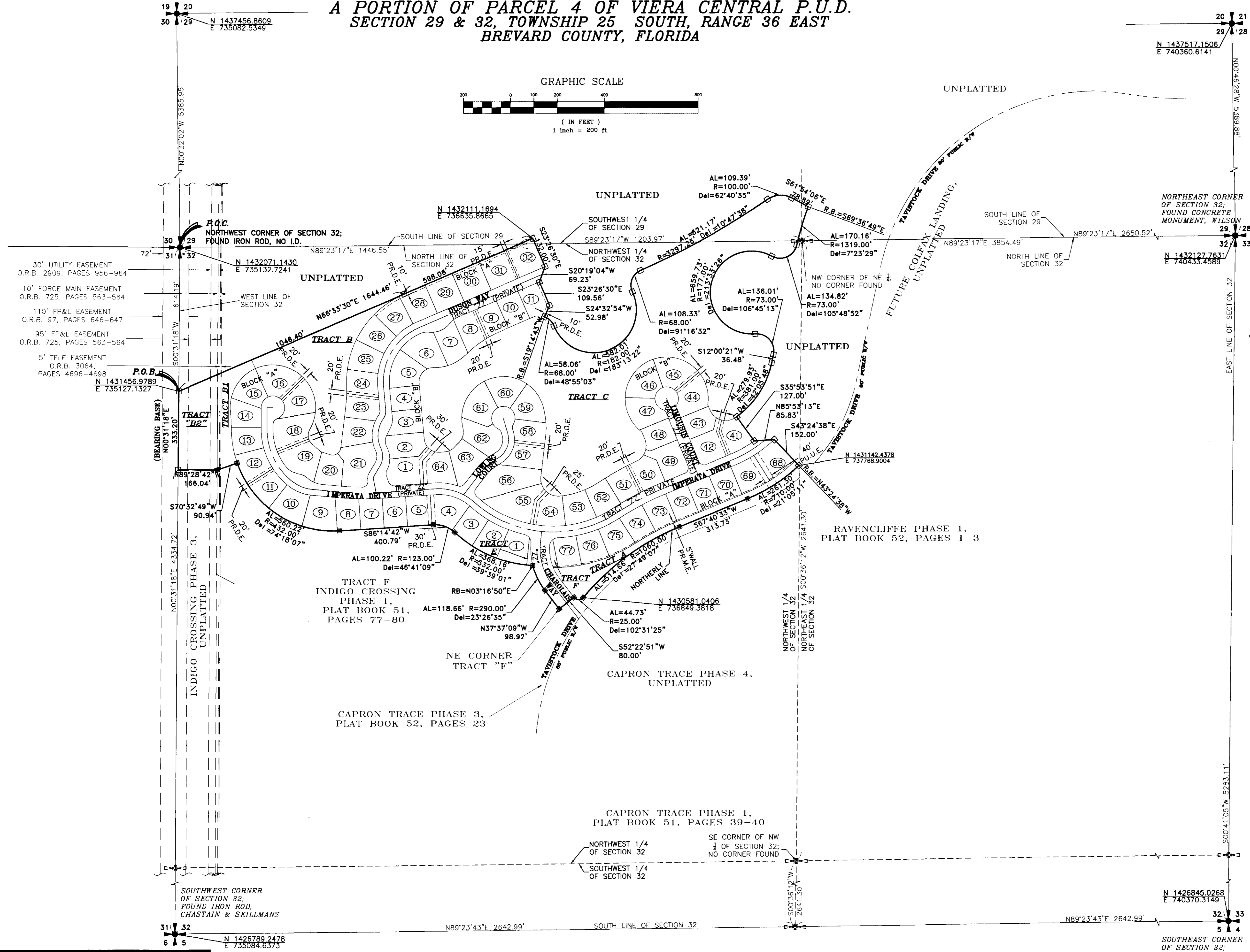
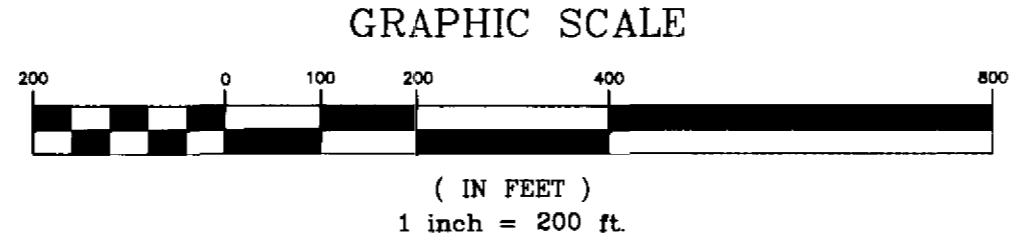
#### BREVARD COUNTY, FLORIDA



LOCATION MAP  
N.T.S.

LEGEND

- = PERMANENT CONTROL POINT - FOUND (METAL MARKER WITH A METAL DISK STAMPED "P.C.P.-LB4905")
- ⊙ = PERMANENT CONTROL POINT - SET (METAL MARKER WITH A METAL DISK STAMPED "P.C.P.-LB4905")
- = PERMANENT REFERENCE MONUMENT - SET (4"x4" CONCRETE MARKER WITH METAL DISK STAMPED "PRM L.B. 4905")
- = PERMANENT REFERENCE MONUMENT - FOUND (4"x4" CONCRETE MARKER WITH METAL DISK STAMPED "PRM L.S. 3913")
- ⊕ = SECTION CORNER - FOUND (AS DESCRIBED)
- ⊖ = SECTION QUARTER CORNER - NOT FOUND
- AL = ARC LENGTH OF CURVE
- R = RADIUS OF CURVE
- DEL = CENTRAL ANGLE OF CURVE
- Ch = CHORD LENGTH OF CURVE
- CB = CHORD BEARING OF CURVE
- R.B. = RADIAL BEARING
- P.O.B. = POINT OF BEGINNING
- P.O.C. = POINT OF COMMENCEMENT
- C# = CURVE TABLE LABEL
- R/W = RIGHT OF WAY
- D.E. = DRAINAGE EASEMENT
- U.E. = UTILITY EASEMENT
- M.E. = MAINTENANCE EASEMENT
- PR. = PRIVATE
- PU. = PUBLIC
- O.R.B. = OFFICIAL RECORD BOOK
- D.&A.E. = DRAINAGE AND ACCESS EASEMENT
- P.R.M. = PERMANENT REFERENCE MONUMENT



2004 B.S.E. CONSULTANTS, INC. H:\Projects Folder\10715\Drawings\300Plats\10715302.dwg 4/27/2005 10:38:05 AM EDT  
 B.S.E. DWG. 10715302

**B.S.E. CONSULTANTS, INC.**  
 CONSULTING - ENGINEERING - LAND SURVEYING  
 312 SOUTH HARBOR CITY BOULEVARD, SUITE 4  
 MELBOURNE, FLORIDA PHONE: (321) 725-3674 FAX: (321) 723-1159  
 CERTIFICATE OF BUSINESS AUTHORIZATION: 4905  
 CERTIFICATE OF LAND SURVEYING BUSINESS AUTHORIZATION: LB0004905

NOTICE: THIS PLAT, AS RECORDED IN ITS GRAPHIC FORM, IS THE OFFICIAL DEPICTION OF THE SUBDIVIDED LANDS DESCRIBED HEREIN AND WILL IN NO CIRCUMSTANCES BE SUPPLANTED IN AUTHORITY BY ANY OTHER GRAPHIC OR DIGITAL FORM OF THE PLAT. THERE MAY BE ADDITIONAL RESTRICTIONS THAT ARE NOT RECORDED ON THIS PLAT THAT MAY BE FOUND IN THE PUBLIC RECORDS OF THIS COUNTY.