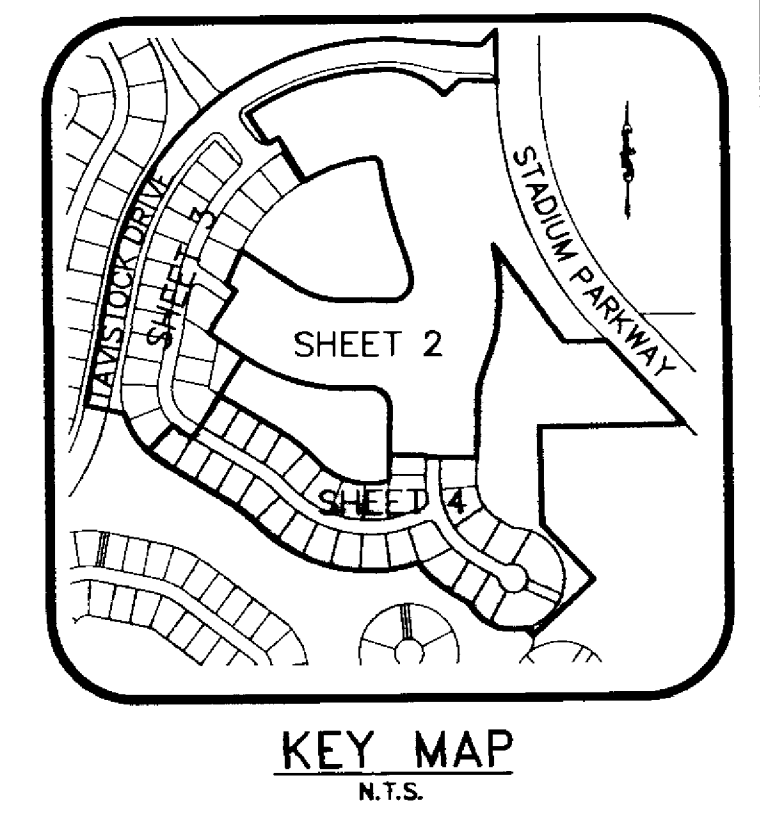
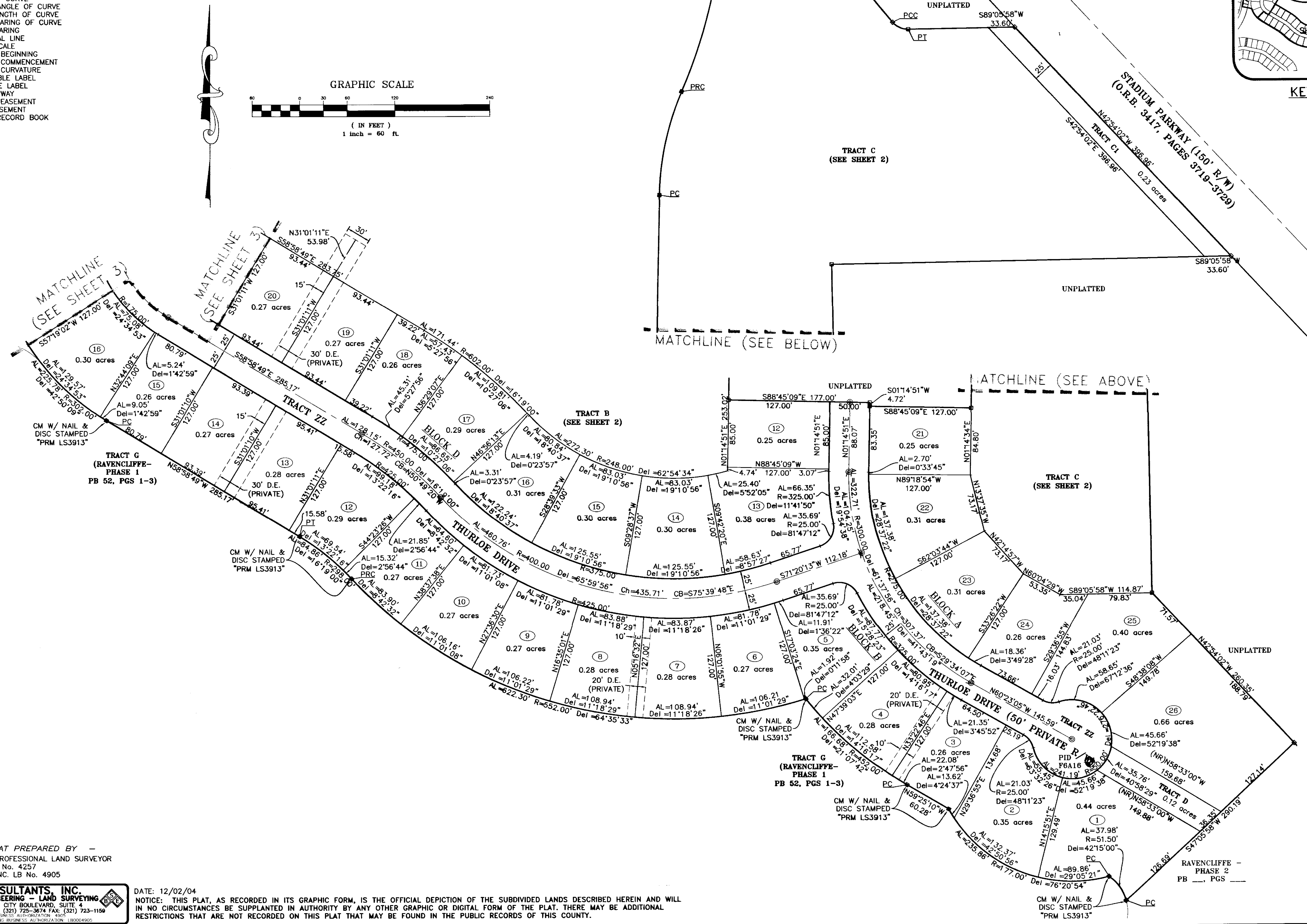
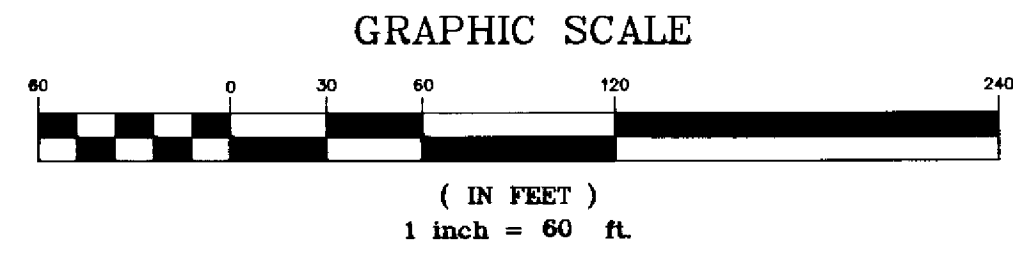


COLFAX LANDING - PHASE 1

VIERA CENTRAL P.U.D. - A PORTION OF PARCEL 4 AND A PORTION OF SECTIONS 29 & 32, TOWNSHIP 25 SOUTH, RANGE 36 EAST VIERA, BREVARD COUNTY, FLORIDA



- LEGEND**
- ⊙ = PERMANENT CONTROL POINT - SET (METAL MARKER WITH A METAL DISK STAMPED "PCP LB 4905")
 - ⊠ = PERMANENT REFERENCE MONUMENT - SET (4"x4" CONCRETE MARKER WITH METAL DISK STAMPED "PRM LB 4905")
 - = PERMANENT REFERENCE MONUMENT - FOUND (4"x4" CONCRETE MARKER MARKED "LS-3913")
 - IR = IRON ROD
 - CM = CONCRETE MONUMENT
 - AL = ARC LENGTH OF CURVE
 - R = RADIUS OF CURVE
 - Del = CENTRAL ANGLE OF CURVE
 - Ch = CHORD LENGTH OF CURVE
 - CB = CHORD BEARING OF CURVE
 - RB = RADIAL BEARING
 - (NR) = NON RADIAL LINE
 - N.T.S. = NOT TO SCALE
 - P.O.B. = POINT OF BEGINNING
 - P.O.C. = POINT OF COMMENCEMENT
 - PC = POINT OF CURVATURE
 - CT = CURVE TABLE LABEL
 - L# = LINE TABLE LABEL
 - R/W = RIGHT OF WAY
 - D.E. = DRAINAGE EASEMENT
 - U.E. = UTILITY EASEMENT
 - O.R.B. = OFFICIAL RECORD BOOK



THIS PLAT PREPARED BY
 CHARLES E. PORTER, PROFESSIONAL LAND SURVEYOR
 FLORIDA CERTIFICATION No. 4257
 B.S.E. CONSULTANTS, INC. LB No. 4905

DATE: 12/02/04
 NOTICE: THIS PLAT, AS RECORDED IN ITS GRAPHIC FORM, IS THE OFFICIAL DEPICTION OF THE SUBDIVIDED LANDS DESCRIBED HEREIN AND WILL IN NO CIRCUMSTANCES BE SUPPLANTED IN AUTHORITY BY ANY OTHER GRAPHIC OR DIGITAL FORM OF THE PLAT. THERE MAY BE ADDITIONAL RESTRICTIONS THAT ARE NOT RECORDED ON THIS PLAT THAT MAY BE FOUND IN THE PUBLIC RECORDS OF THIS COUNTY.

B.S.E. CONSULTANTS, INC.
 CONSULTING - ENGINEERING - LAND SURVEYING
 312 SOUTH HARBOR CITY BOULEVARD, SUITE 4
 MELBOURNE, FLORIDA - PHONE: (321) 725-3674 FAX: (321) 723-1150
 CERTIFICATE OF BUSINESS AUTHORIZATION: 4905
 CERTIFICATE OF LAND SURVEYING BUSINESS AUTHORIZATION: 140004905

Handwritten signature/initials

H:\Projects\Federal\10732\Drawings\10732303-304.dwg 4/17/2005 2:26:12 PM EST
 B.S.E. CONSULTANTS, INC.