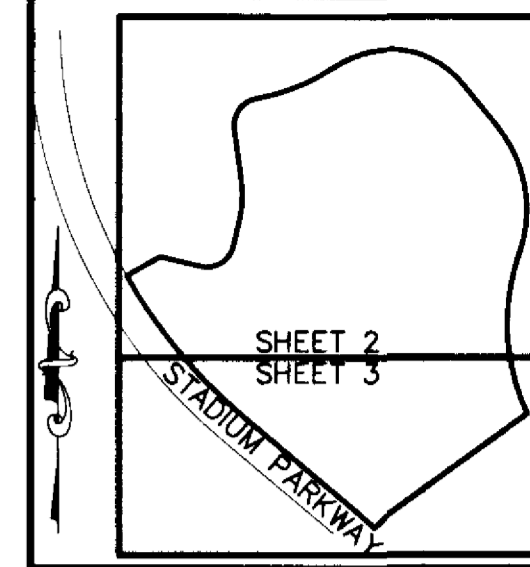


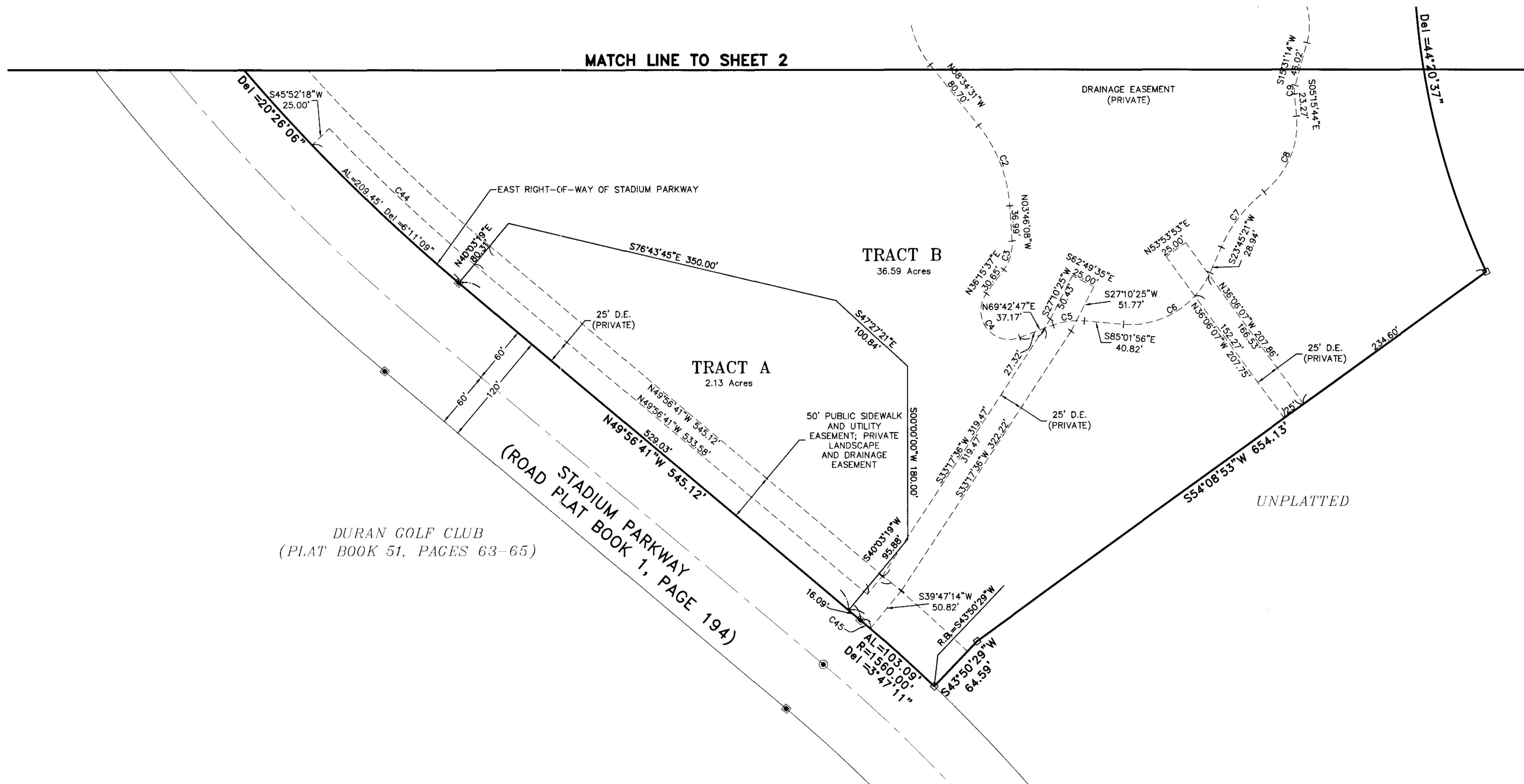
DURAN EAST

A PORTION OF PARCEL 4, VIERA CENTRAL P.U.D.
SECTION 9, TOWNSHIP 26 SOUTH, RANGE 36 EAST
VIERA, BREVARD COUNTY, FLORIDA

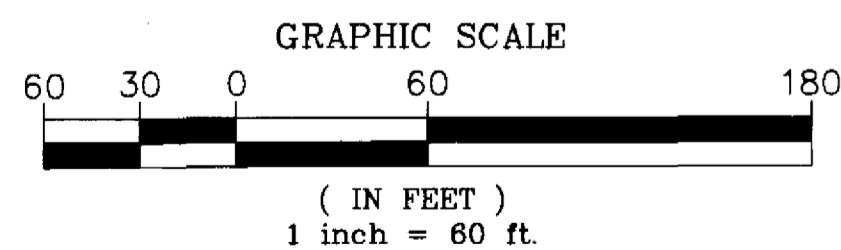
PLAT BOOK 53, PAGE 3
SHEET 3 OF 3
SECTION 9, TWP. 26S, RANGE 36 E



KEY MAP
N.T.S.



STATE PLANE COORDINATE NOTES:
THE COORDINATES SHOWN HEREON ARE BASED ON THE STATE PLANE COORDINATE SYSTEM FOR FLORIDA'S EAST ZONE
NORTH AMERICAN DATUM OF 1983 AND READJUSTED IN 1999 (NAD83/99).
A GPS CONTROL SURVEY UTILIZING THREE ASHTECH PROMARK 2 GPS RECEIVERS WAS PERFORMED.
THE NETWORK VECTOR DATA WAS ADJUSTED BY LEAST SQUARES METHOD UTILIZING ASHTEC SOLUTIONS VERSION 2.7
THE STATIONS SHOWN BELOW WERE HELD FIXED IN THE NETWORK ADJUSTMENT.



DESIGNATION	PID	NORTHING	N METERS	EASTING	E METERS	N. LATITUDE	W. LONGITUDE	COMBINED SCALE FACTOR	CONVERGENCE ANGLE
DURAN AZ MK 6	AK7519	1,426,329.224	434,746.017	738,933.411	225,227.354	28°15'26.19982"	080°44'34.43002"	0.99994903	(+0'07" 18.2"
BREVARD GPS 1090	AK7524	1,422,840.468	433,682.642	740,680.393	225,759.744	28°14'51.61826"	080°44'14.98184"	0.99994936	(+0'07" 27.3"
T 95 73A64	AK2846	1,416,452.318	431,735.530	746,854.3344	227,641.565	28°13'48.22765"	080°43'06.11244"	0.99995250	(+0'07" 59.6"

2/1/05

— THIS PLAT PREPARED BY —
SCOTT M. CLAUBITZ, PROFESSIONAL LAND SURVEYOR
FLORIDA CERTIFICATION No. 4151
B.S.E. CONSULTANTS, INC. LB No. 4905

B.S.E. CONSULTANTS, INC.
CONSULTING - ENGINEERING - LAND SURVEYING
312 SOUTH HARBOR CITY BOULEVARD, SUITE 4
MELBOURNE, FLORIDA PHONE: (321) 725-3674 FAX: (321) 723-1159
CERTIFICATE OF BUSINESS AUTHORIZATION: 4905
CERTIFICATE OF LAND SURVEYING BUSINESS AUTHORIZATION: LB0004905

B.S.E. DWG. 10697306

© 2004 B.S.E. CONSULTANTS, INC. H:\Projects\Folder\10697\Drawings\300Plats\10697305-306.dwg 2/1/2005 11:08:26 AM EST