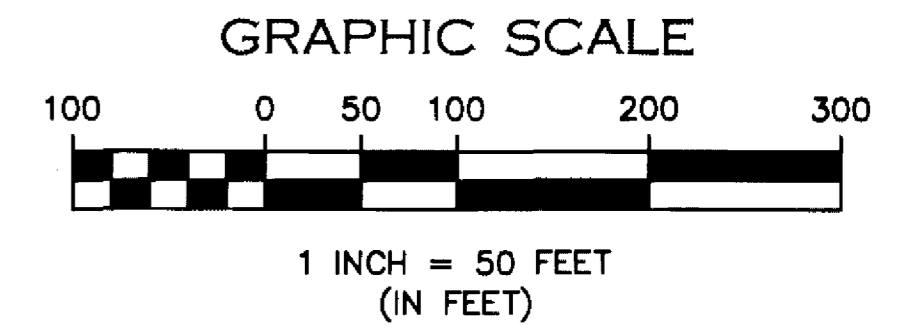
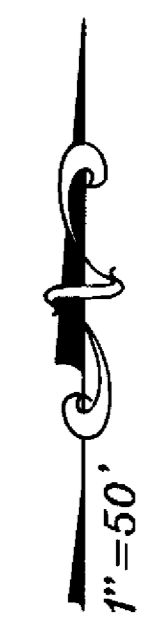


PALMWOOD

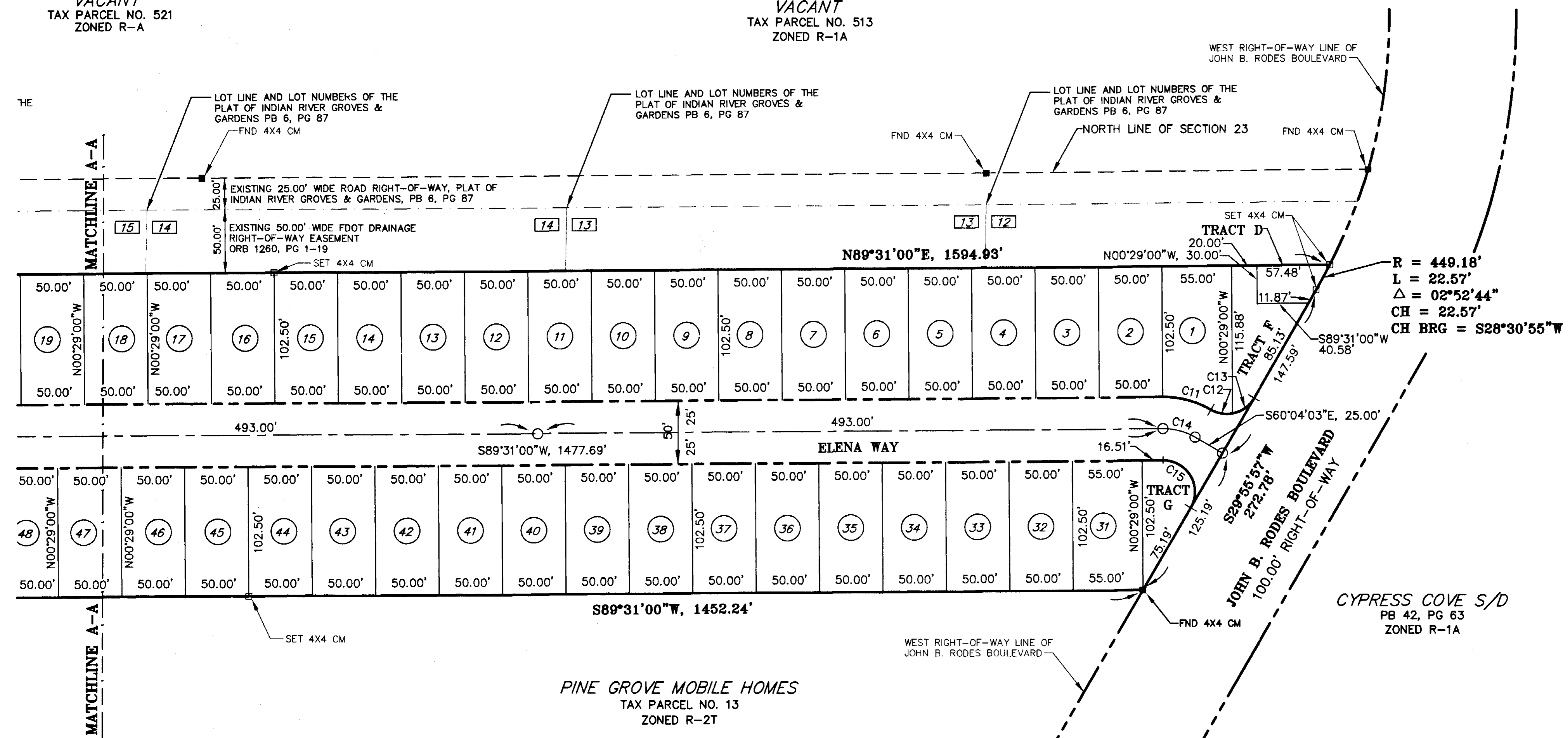
A SUBDIVISION OF A PORTION OF THE NORTHEAST QUARTER OF SECTION 22, TOWNSHIP 27 SOUTH, RANGE 36 EAST AND A REPLAT OF A PORTION OF LOTS 12, 13, 14, 15 AND 16 ACCORDING TO THE PLAT OF INDIAN RIVER GROVES AND GARDENS AS RECORDED IN PLAT BOOK 6, PAGE 87 OF THE PUBLIC RECORDS OF BREVARD COUNTY, FLORIDA

LOCATED WITHIN
 SECTIONS 22 AND 23, TOWNSHIP 27 SOUTH, RANGE 36 EAST
 CITY OF MELBOURNE, BREVARD COUNTY, FLORIDA



VACANT
 TAX PARCEL NO. 521
 ZONED R-A

VACANT
 TAX PARCEL NO. 513
 ZONED R-1A

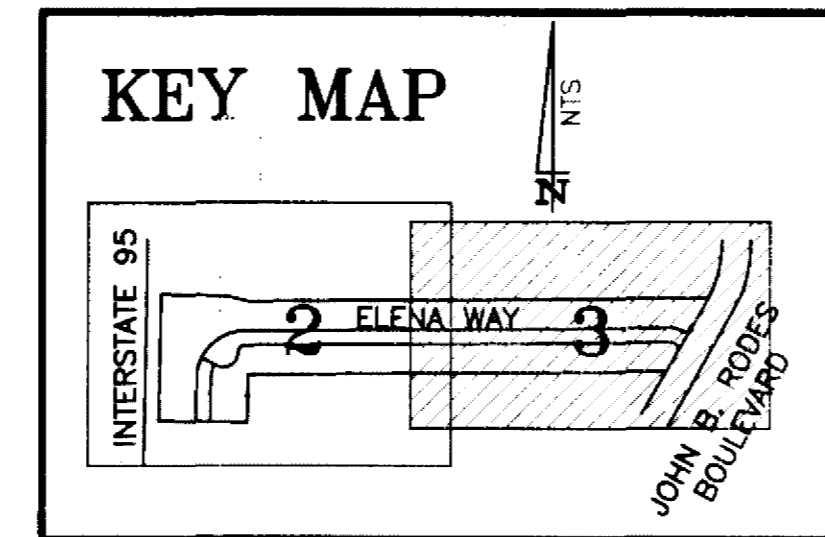


CURVE NUMBER	RADIUS	ARC LENGTH	DELTA
C1	170.00'	148.80'	50°09'01"
C2	170.00'	114.03'	38°25'59"
C3	170.00'	73.78'	24°51'59"
C4	145.00'	224.18'	88°35'00"
C5	145.00'	63.99'	25°17'02"
C6	145.00'	62.32'	24°37'28"
C7	145.00'	97.88'	38°40'31"
C8	120.00'	52.95'	25°17'02"
C9	50.00'	102.72'	117°42'21"
C10	25.00'	39.71'	91°00'16"
C11	75.00'	39.81'	30°24'57"
C12	25.00'	17.67'	40°29'23"
C13	25.00'	21.60'	49°30'37"
C14	50.00'	26.54'	30°24'57"
C15	25.00'	52.54'	120°24'57"
C16	170.00'	75.02'	25°17'02"

- LEGEND AND ABBREVIATIONS**
- CH = CHORD
 - CH BRG = CHORD BEARING
 - CM = CONCRETE MONUMENT
 - EXIST = EXISTING
 - FDOT = FLORIDA DEPARTMENT OF TRANSPORTATION
 - FND = FOUND
 - IP = IRON PIPE
 - IR = IRON ROD
 - IRC = IRON ROD & CAP
 - LB = STATE OF FLORIDA CORPORATE NUMBER
 - N&D = NAIL & DISK
 - N&T = NAIL & TAB
 - ORB = OFFICIAL RECORDS BOOK
 - PB = PLAT BOOK
 - PG = PAGE
 - R = RADIUS
 - RRS = RAILROAD SPIKE
 - = SET PRM = 4X4 CONCRETE MONUMENT, "LB 6612"
 - = SET PCP = PK NAIL & DISK "LB 6612"
 - △ = DELTA
 - = FOUND PRM = 4X4 CONCRETE MONUMENT
 - = FOUND PRM = FOUND 1/2 IRON ROD AND CAP SMITH LB 6426

NOTICE

THIS PLAT, AS RECORDED IN ITS GRAPHIC FORM, IS THE OFFICIAL DEPICTION OF THE SUBDIVIDED LANDS DESCRIBED HEREIN AND WILL IN NO CIRCUMSTANCES BE SUPPLANTED IN AUTHORITY BY ANY OTHER GRAPHIC OR DIGITAL FORM OF THE PLAT. THERE MAY BE ADDITIONAL RESTRICTIONS THAT ARE NOT RECORDED ON THIS PLAT THAT MAY BE FOUND IN THE PUBLIC RECORDS OF THIS COUNTY.



CURVE NUMBER	RADIUS	ARC LENGTH	DELTA	CHORD LENGTH	CHORD BEARING
C4	145.00'	224.18'	88°35'00"	152.17'	S57°52'01"W
C6	145.00'	62.32'	24°37'28"	61.84'	S38°31'45"W
C7	145.00'	97.88'	38°40'31"	96.03'	S70°10'45"W
C14	50.00'	26.54'	30°24'57"	26.23'	S75°16'32"E

OUTLAW & JONES ENGINEERS, INC.
 CONSULTING CIVIL ENGINEERS
 1222 NORTH HARBOR CITY BOULEVARD • MELBOURNE, FL 32935
 TELEPHONE: 321-254-9721 • FAX: 321-242-7854 • EMAIL: ORS1@EARTHINK.NET
 EB NO. 4403 • LB NO. 6612
 DEC 2002
 S723-32 12\723-32\PLAT