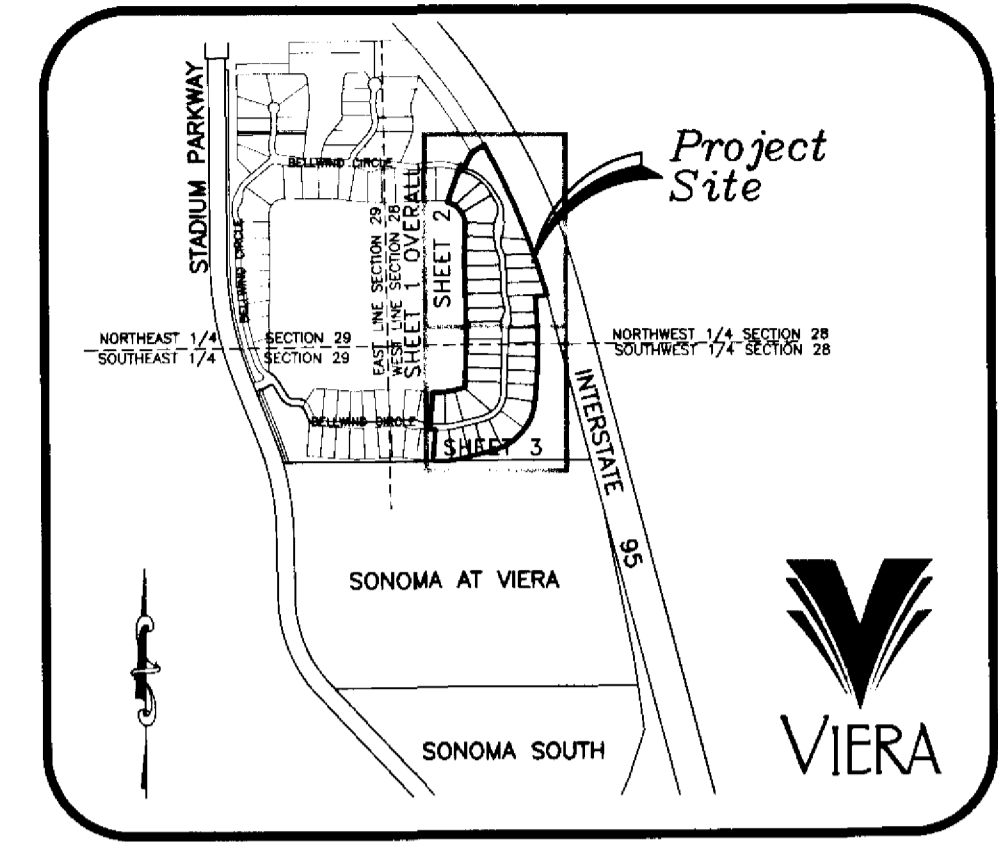
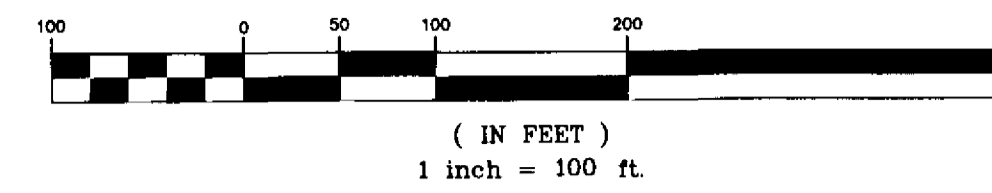


SUMMER LAKES - PHASE 3

VIERA CENTRAL P.U.D. - A PORTION OF PARCEL 1
 SECTION 28, TOWNSHIP 25 SOUTH, RANGE 36 EAST
 VIERA, BREVARD COUNTY, FLORIDA

GRAPHIC SCALE

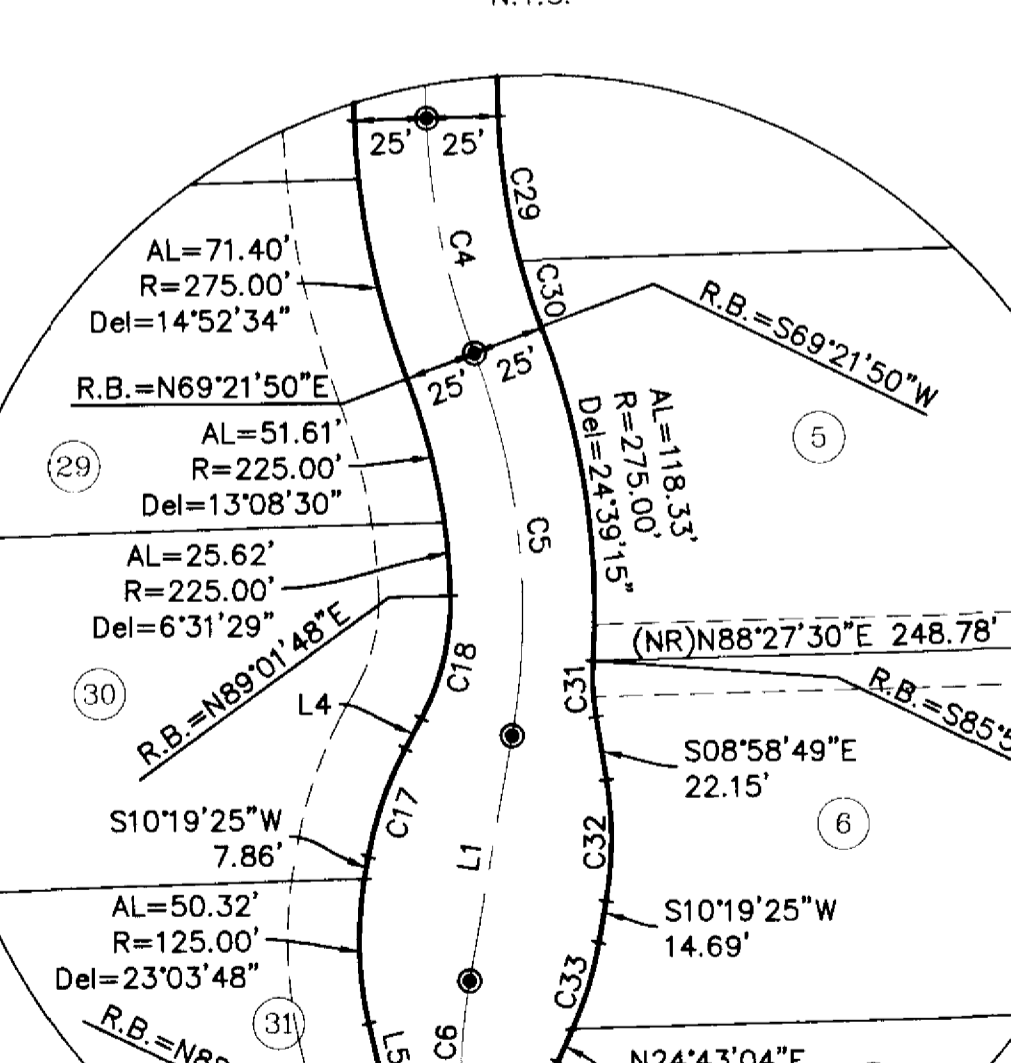
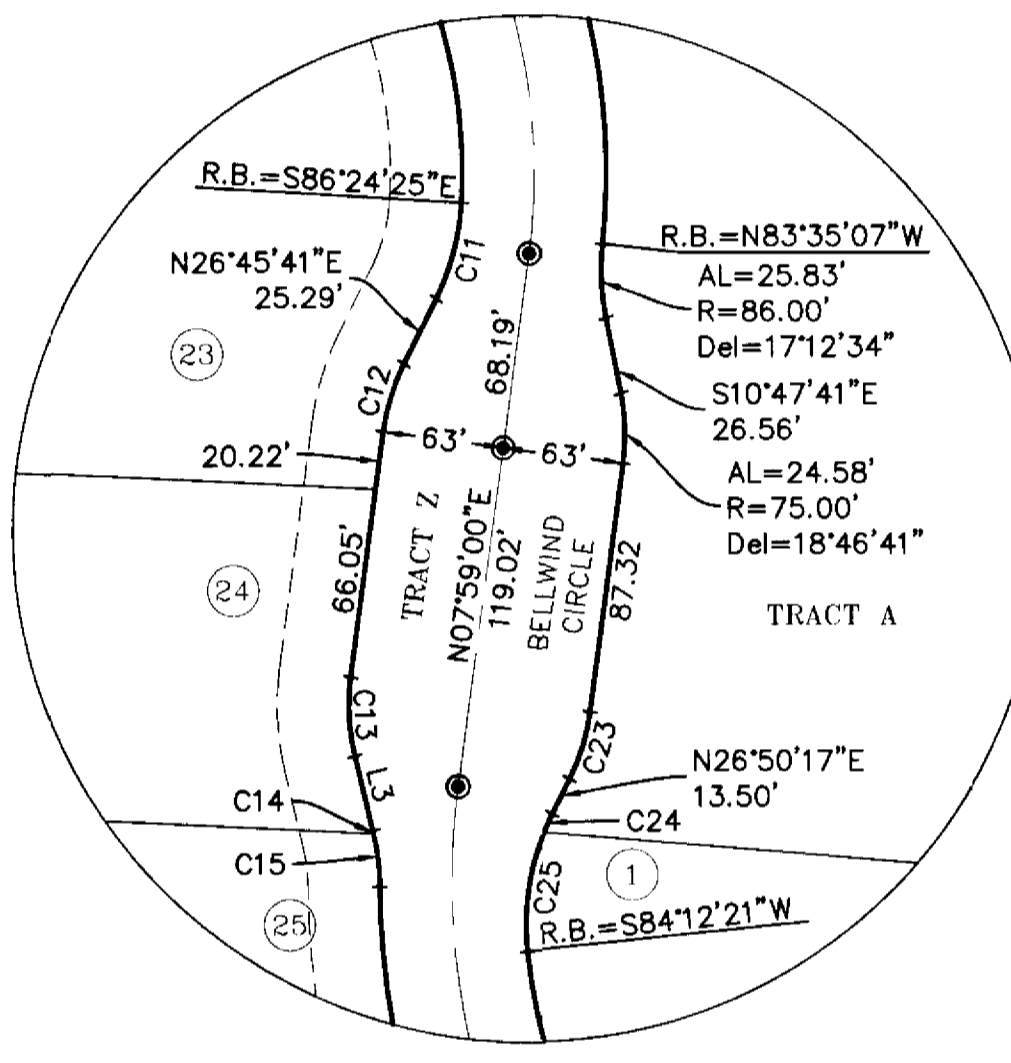
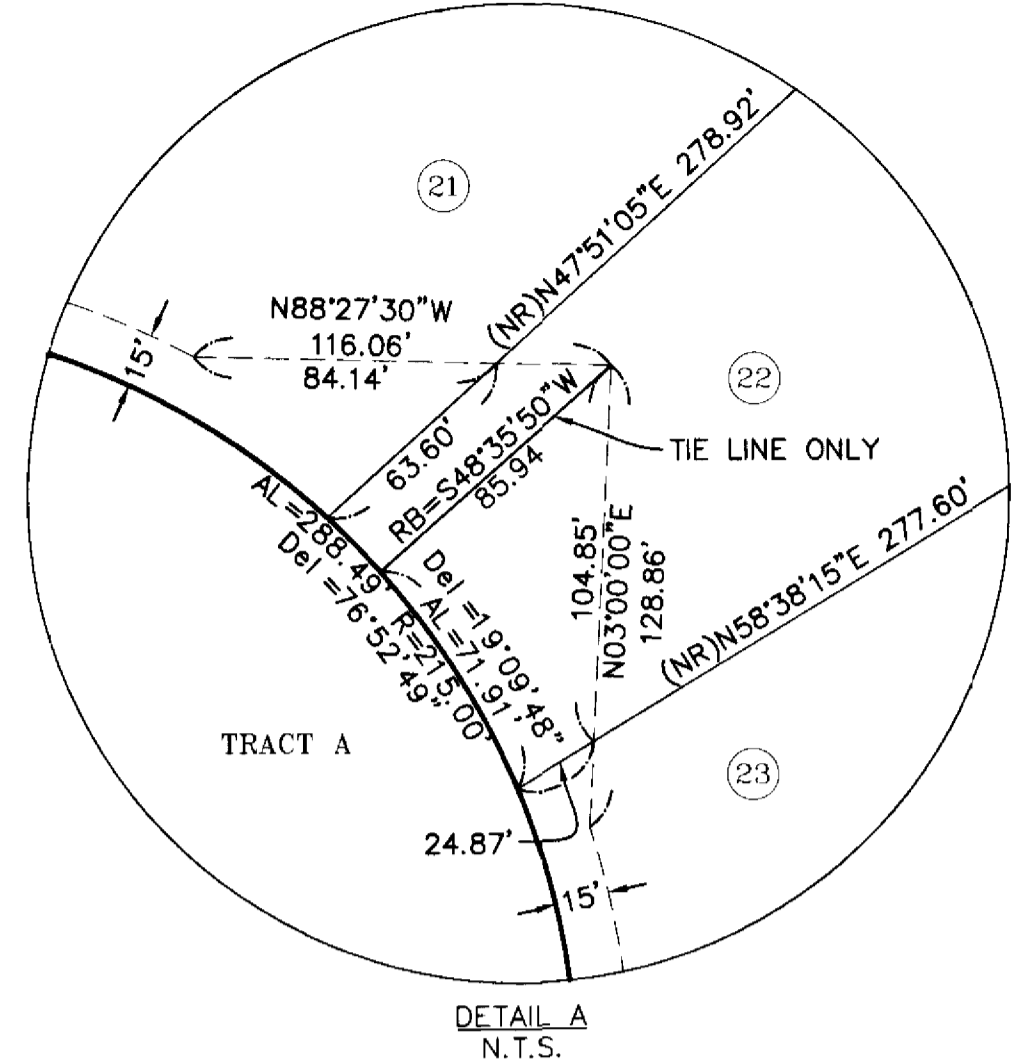
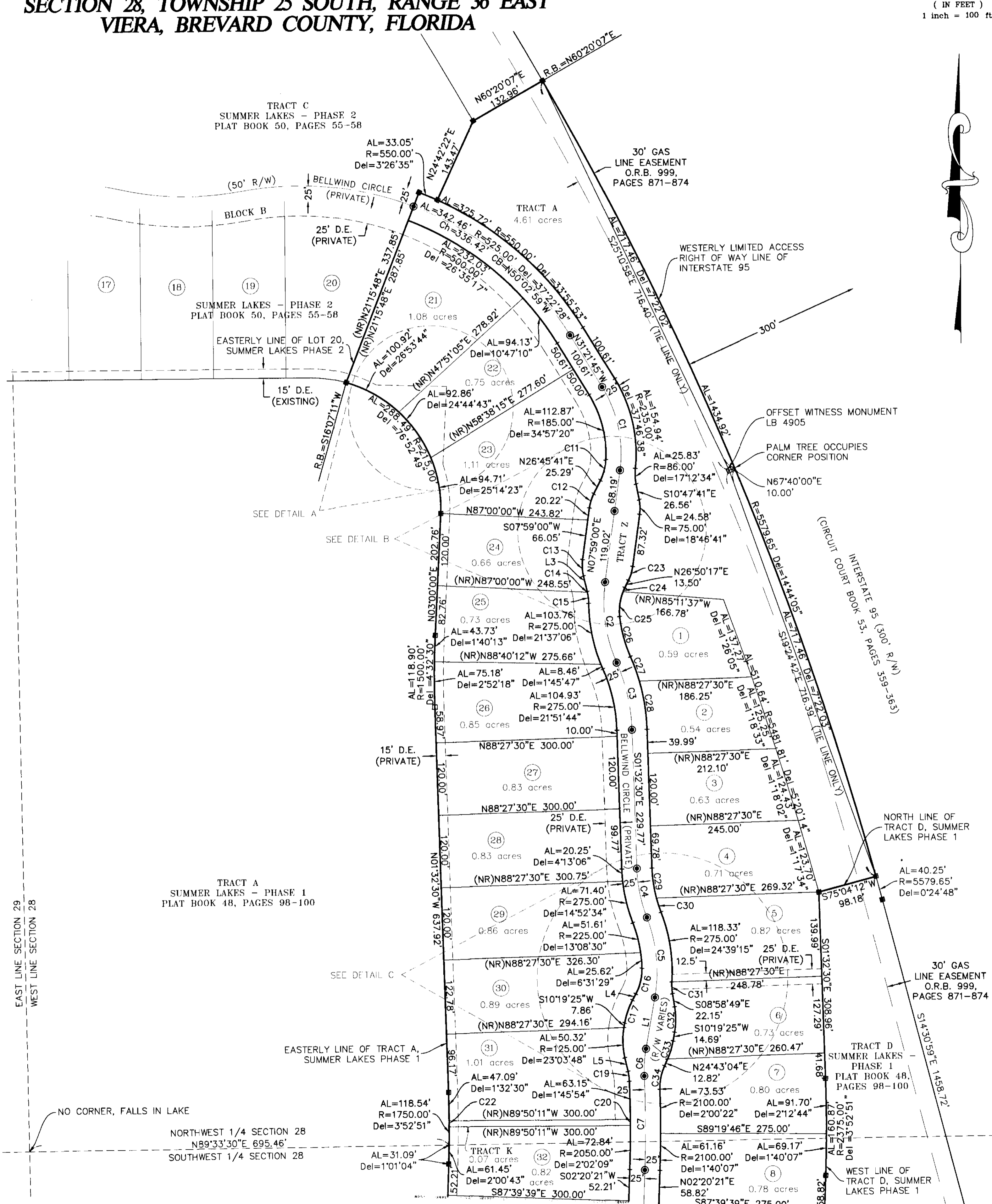


KEY MAP
 N.T.S.

- LEGEND**
- ⊙ = PERMANENT CONTROL POINT - SET (METAL MARKER WITH A METAL DISK STAMPED "P.C.P.-LB 4905")
 - ⊠ = PERMANENT REFERENCE MONUMENT - SET (4"x4" CONCRETE MARKER WITH METAL DISK STAMPED "P.R.M.-LB 4905")
 - ⊠ = PERMANENT REFERENCE MONUMENT - FOUND (4"x4" CONCRETE MARKER WITH METAL DISK STAMPED "P.R.M.-L.S. 3913" UNLESS NOTED OTHERWISE)
 - AL = ARC LENGTH OF CURVE
 - R = RADIUS OF CURVE
 - Del = CENTRAL ANGLE OF CURVE
 - Ch = CHORD LENGTH OF CURVE
 - CB = CHORD BEARING OF CURVE
 - RB = RADIAL BEARING
 - (NR) = NON RADIAL LINE
 - P.O.B. = POINT OF BEGINNING
 - P.O.C. = POINT OF COMMENCEMENT
 - PC = POINT OF CURVATURE
 - C# = CURVE TABLE LABEL
 - L# = LINE TABLE LABEL
 - R/W = RIGHT OF WAY
 - D.E. = DRAINAGE EASEMENT
 - U.E. = UTILITY EASEMENT
 - D.&A.E. = DRAINAGE AND ACCESS EASEMENT
 - O.R.B. = OFFICIAL RECORD BOOK
 - P.B. = PLAT BOOK
 - PGS. = PAGES

LINE	BEARING	LENGTH
L1	S10°19'25"W	86.29'
L2	N89°43'28"E	59.42'
L3	S13°12'58"E	26.61'
L4	N28°34'28"E	11.80'
L5	S12°44'23"E	23.09'

CURVE	RADIUS	LENGTH	DELTA	CHORD BEARING	CHORD
C1	210.00'	144.21'	39°20'44"	N11°41'23"W	141.39'
C2	250.00'	136.95'	31°23'13"	S07°42'37"E	135.25'
C3	300.00'	114.47'	21°51'44"	N12°28'22"W	113.78'
C4	250.00'	83.32'	19°05'40"	S11°05'20"E	82.93'
C5	250.00'	135.09'	30°57'35"	N05°09'23"W	133.45'
C6	210.00'	45.01'	12°16'52"	S04°10'59"W	44.93'
C7	2075.00'	155.62'	4°17'49"	N00°11'27"E	155.58'
C8	225.00'	290.45'	73°57'41"	N39°19'12"E	270.70'
C9	300.00'	70.29'	13°25'26"	N83°00'45"E	70.13'
C10	800.00'	62.57'	4°28'53"	S88°02'06"E	62.56'
C11	86.00'	34.78'	23°10'06"	N15°10'38"E	34.54'
C12	75.00'	24.58'	18°46'41"	S17°22'20"W	24.47'
C13	75.00'	27.75'	21°11'57"	S02°36'59"E	27.59'
C14	86.00'	1.24'	0°49'25"	N12°48'15"W	1.24'
C15	86.00'	18.57'	12°22'13"	N06°12'26"W	18.53'
C16	86.00'	44.35'	29°32'40"	N13°48'08"E	43.86'
C17	125.00'	39.82'	18°15'03"	S19°28'56"W	39.65'
C18	86.00'	16.51'	10°59'55"	N07°14'26"W	16.48'
C19	2050.00'	10.00'	0°16'46"	N00°09'49"E	10.00'
C20	775.00'	60.62'	4°28'53"	S88°02'06"E	60.60'
C21	1750.00'	10.00'	0°19'39"	N00°09'49"E	10.00'
C22	75.00'	24.68'	18°51'18"	N17°24'38"E	24.57'
C23	86.00'	7.11'	4°44'03"	S24°28'16"W	7.10'
C24	86.00'	41.87'	27°53'53"	S08°09'17"W	41.46'
C25	225.00'	69.15'	17°36'35"	S14°35'56"E	68.88'
C26	325.00'	43.17'	7°36'38"	N19°35'55"W	43.14'
C27	325.00'	80.84'	14°15'06"	N08°40'03"W	80.63'
C28	225.00'	50.65'	12°53'50"	S07°59'25"E	50.54'
C29	225.00'	24.34'	6°11'50"	S17°32'15"E	24.33'
C30	86.00'	19.51'	12°59'54"	S02°28'52"E	19.47'
C31	125.00'	42.11'	19°18'13"	N00°40'18"E	41.92'
C32	125.00'	31.40'	14°23'39"	N17°31'14"E	31.32'
C33	86.00'	39.11'	26°03'11"	S11°41'28"W	38.77'



THIS PLAT PREPARED BY
 CHARLES E. PORTER, PROFESSIONAL LAND SURVEYOR
 FLORIDA CERTIFICATION No. 4257
 B.S.E. CONSULTANTS, INC. LB No. 4905

B.S.E. CONSULTANTS, INC.
 CONSULTING - ENGINEERING - LAND SURVEYING
 312 SOUTH HARBOR CITY BOULEVARD, SUITE 4
 MELBOURNE, FLORIDA PHONE: (321) 725-3674 FAX: (321) 723-1159
 CERTIFICATE OF BUSINESS AUTHORIZATION 4905
 CERTIFICATE OF LAND SURVEYING BUSINESS AUTHORIZATION LB0004905

NOTICE: THIS PLAT, AS RECORDED IN ITS GRAPHIC FORM, IS THE OFFICIAL DEPICTION OF THE SUBDIVIDED LANDS DESCRIBED HEREIN AND WILL IN NO CIRCUMSTANCES BE SUPPLANTED IN AUTHORITY BY ANY OTHER GRAPHIC OR DIGITAL FORM OF THE PLAT. THERE MAY BE ADDITIONAL RESTRICTIONS THAT ARE NOT RECORDED ON THIS PLAT THAT MAY BE FOUND IN THE PUBLIC RECORDS OF THIS COUNTY.