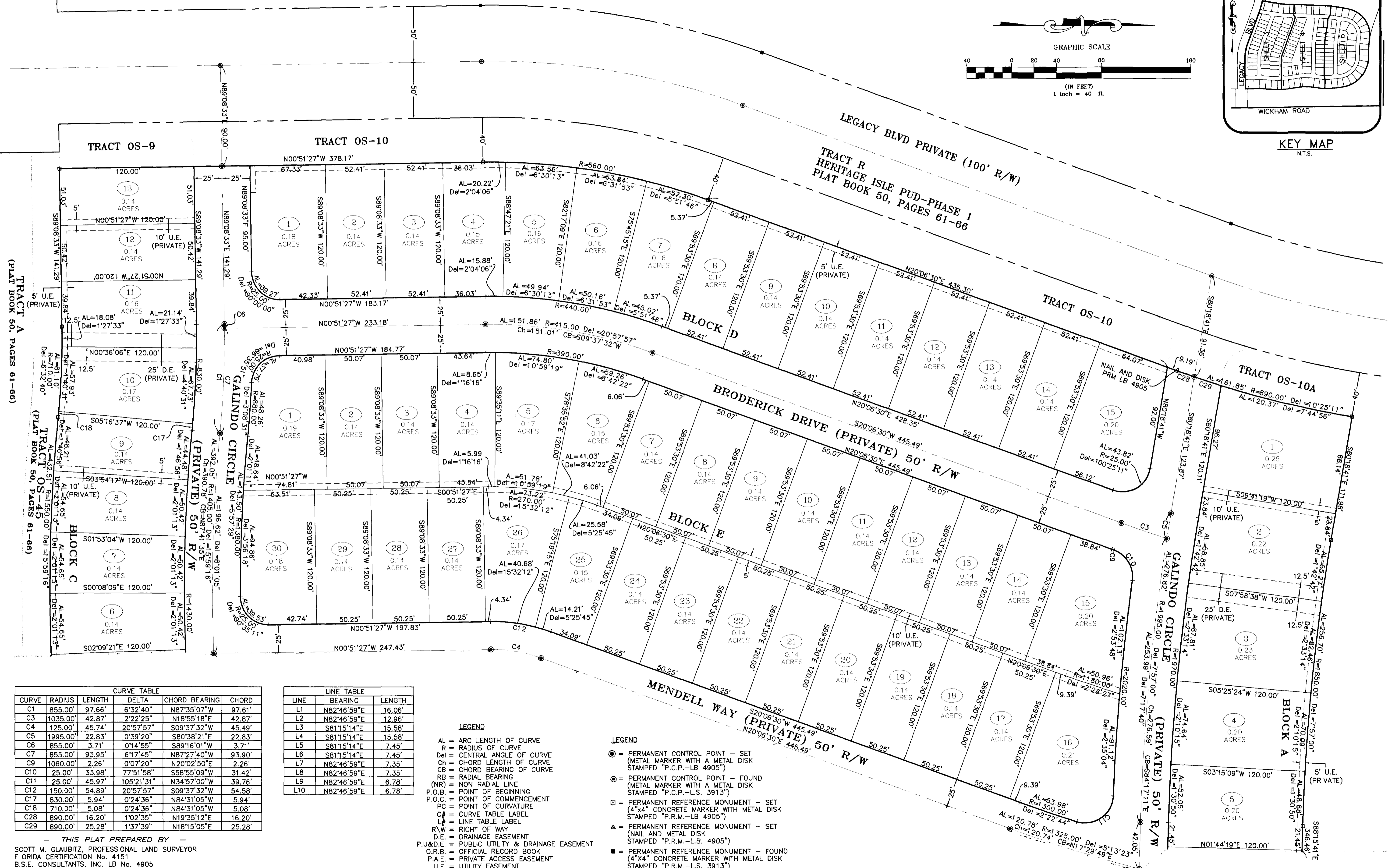
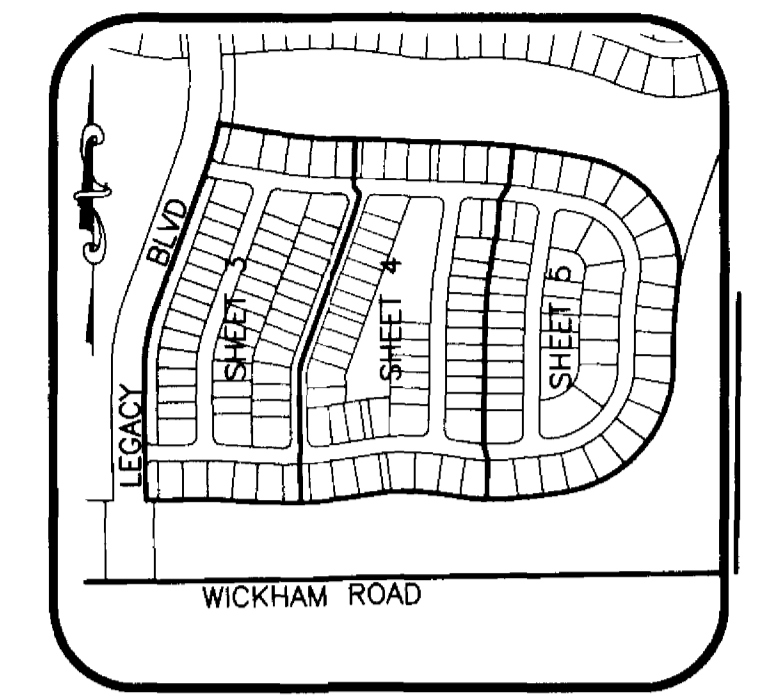
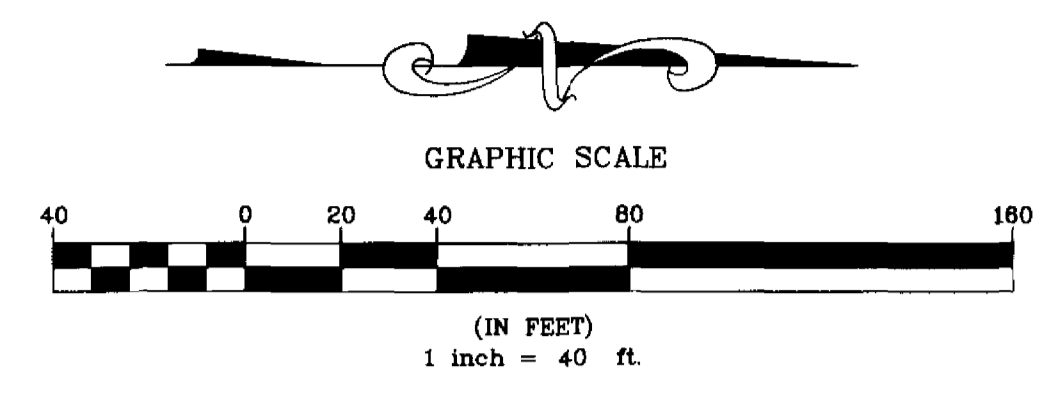


# HERITAGE ISLE P.U.D. - PHASE 3

REPLAT OF TRACT D OF HERITAGE ISLE P.U.D.- PHASE 1 AS RECORDED IN PLAT BOOK 50, PAGES 61-66  
 SECTION 8, TOWNSHIP 26 SOUTH, RANGE 36 EAST  
 VIERA, BREVARD COUNTY, FLORIDA



CURVE	RADIUS	LENGTH	DELTA	CHORD BEARING	CHORD
C1	855.00'	97.66'	6°32'40"	N87°35'07"W	97.61'
C3	1035.00'	42.87'	2°22'25"	N18°55'18"E	42.87'
C4	125.00'	45.74'	20°57'57"	S09°37'32"W	45.49'
C5	1995.00'	22.83'	0°39'20"	S80°38'21"E	22.83'
C6	855.00'	3.71'	0°14'55"	S89°16'01"W	3.71'
C7	855.00'	93.95'	6°17'45"	N87°27'40"W	93.90'
C9	1060.00'	2.26'	0°07'20"	N20°02'50"E	2.26'
C10	25.00'	33.98'	77°51'58"	S58°55'09"W	31.42'
C11	25.00'	45.97'	105°21'31"	N34°57'00"W	39.76'
C12	150.00'	54.89'	20°57'57"	S09°37'32"W	54.58'
C17	830.00'	5.94'	0°24'36"	N84°31'05"W	5.94'
C18	710.00'	5.08'	0°24'36"	N84°31'05"W	5.08'
C28	890.00'	16.20'	1°02'35"	N19°35'12"E	16.20'
C29	890.00'	25.28'	1°37'39"	N18°15'05"E	25.28'

LINE	BEARING	LENGTH
L1	N82°46'59"E	16.06'
L2	N82°46'59"E	12.96'
L3	S81°15'14"E	15.58'
L4	S81°15'14"E	15.58'
L5	S81°15'14"E	7.45'
L6	S81°15'14"E	7.45'
L7	N82°46'59"E	7.35'
L8	N82°46'59"E	7.35'
L9	N82°46'59"E	6.78'
L10	N82°46'59"E	6.78'

**LEGEND**

AL = ARC LENGTH OF CURVE  
 R = RADIUS OF CURVE  
 Del = CENTRAL ANGLE OF CURVE  
 Ch = CHORD LENGTH OF CURVE  
 CB = CHORD BEARING OF CURVE  
 RB = RADIAL BEARING  
 (NR) = NON RADIAL LINE  
 P.O.B. = POINT OF BEGINNING  
 P.O.C. = POINT OF COMMENCEMENT  
 P.C. = POINT OF CURVATURE  
 C# = CURVE TABLE LABEL  
 L# = LINE TABLE LABEL  
 R/W = RIGHT OF WAY  
 D.E. = DRAINAGE EASEMENT  
 P.U.&D.E. = PUBLIC UTILITY & DRAINAGE EASEMENT  
 O.R.B. = OFFICIAL RECORD BOOK  
 P.A.E. = PRIVATE ACCESS EASEMENT  
 U.E. = UTILITY EASEMENT

**LEGEND**

● = PERMANENT CONTROL POINT - SET (METAL MARKER WITH A METAL DISK STAMPED "P.C.P.-LB 4905")  
 ○ = PERMANENT CONTROL POINT - FOUND (METAL MARKER WITH A METAL DISK STAMPED "P.C.P.-L.S. 3913")  
 □ = PERMANENT REFERENCE MONUMENT - SET (4"x4" CONCRETE MARKER WITH METAL DISK STAMPED "P.R.M.-LB 4905")  
 ▲ = PERMANENT REFERENCE MONUMENT - SET (NAIL AND METAL DISK STAMPED "P.R.M.-L.B. 4905")  
 ■ = PERMANENT REFERENCE MONUMENT - FOUND (4"x4" CONCRETE MARKER WITH METAL DISK STAMPED "P.R.M.-L.S. 3913")

THIS PLAT PREPARED BY  
 SCOTT M. GLAUBITZ, PROFESSIONAL LAND SURVEYOR  
 FLORIDA CERTIFICATION No. 4151  
 B.S.E. CONSULTANTS, INC. LB No. 4905

**B.S.E. CONSULTANTS, INC.**  
 CONSULTING - ENGINEERING - LAND SURVEYING  
 312 SOUTH HARBOR CITY BOULEVARD, SUITE 4  
 MELBOURNE, FLORIDA PHONE: (321) 725-3674 FAX: (321) 723-1159  
 CERTIFICATE OF BUSINESS AUTHORIZATION: 4905  
 CERTIFICATE OF LAND SURVEYING BUSINESS AUTHORIZATION: LB004905

DATE: 10/07/04  
 NOTICE: THIS PLAT, AS RECORDED IN ITS GRAPHIC FORM, IS THE OFFICIAL DEPICTION OF THE SUBDIVIDED LANDS DESCRIBED HEREIN AND WILL IN NO CIRCUMSTANCES BE SUPPLANTED IN AUTHORITY BY ANY OTHER GRAPHIC OR DIGITAL FORM OF THE PLAT. THERE MAY BE ADDITIONAL RESTRICTIONS THAT ARE NOT RECORDED ON THIS PLAT THAT MAY BE FOUND IN THE PUBLIC RECORDS OF THIS COUNTY.

2004 B.S.E. CONSULTANTS, INC. All Projects Folder\Projects\2004\BSE\1024316-18.dwg 2/4/2005 8:18:41 AM EST  
 B.S.E. DWG. 10624316