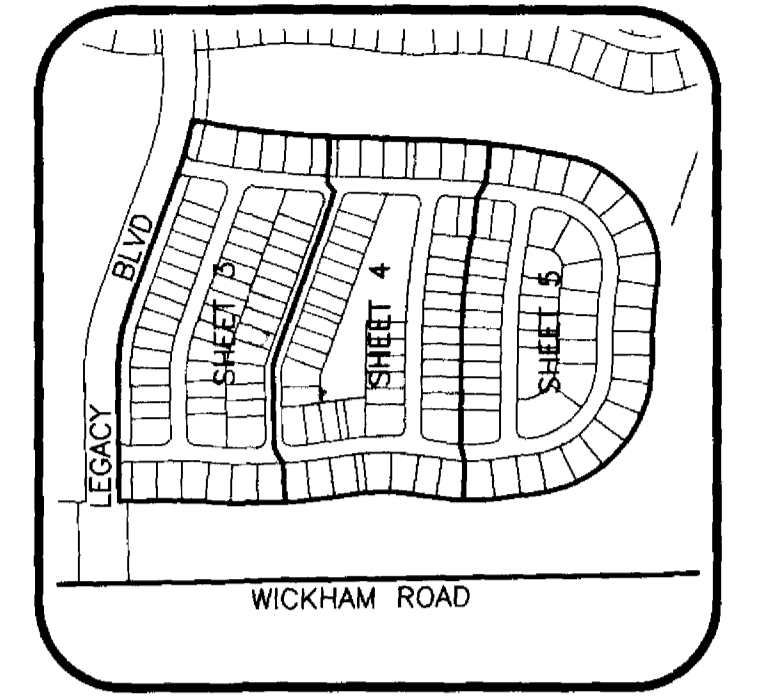
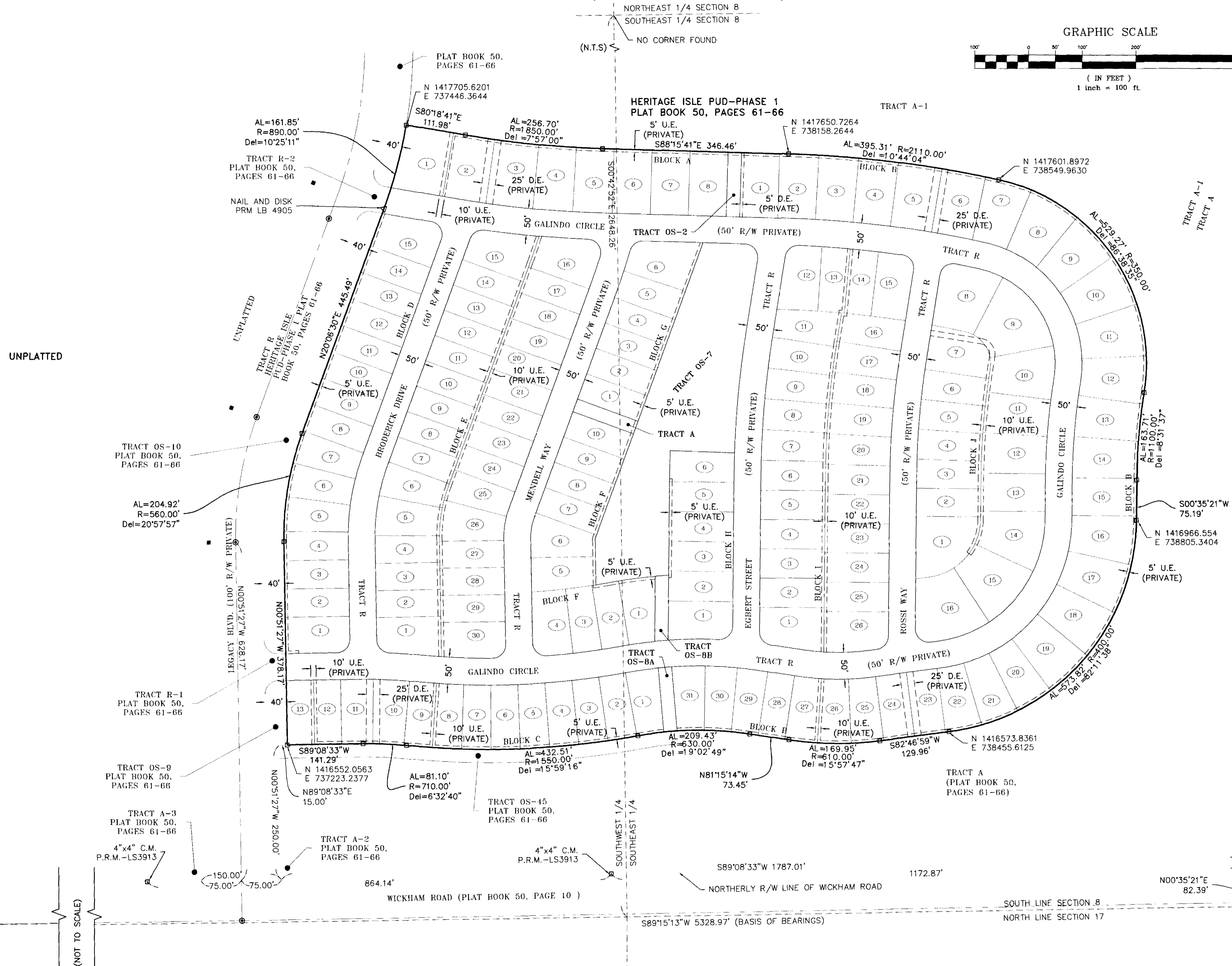
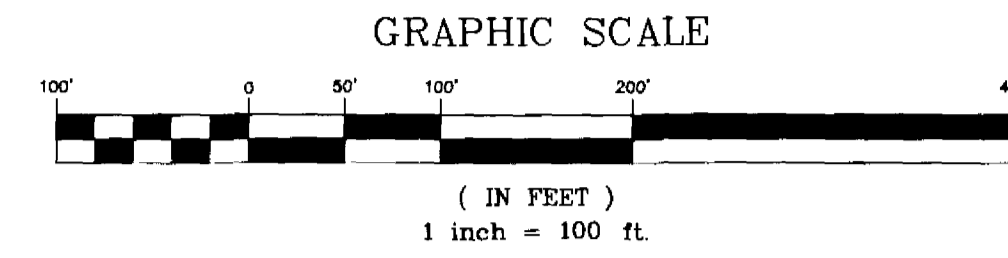


HERITAGE ISLE P.U.D. - PHASE 3

REPLAT OF TRACT D OF HERITAGE ISLE P.U.D.- PHASE 1 AS RECORDED IN PLAT BOOK 50, PAGES 61-66 SECTION 8, TOWNSHIP 26 SOUTH, RANGE 36 EAST VIERA, BREVARD COUNTY, FLORIDA



KEY MAP
N.T.S.



- LEGEND**
- = PERMANENT CONTROL POINT - SET (METAL MARKER WITH A METAL DISK STAMPED "P.C.P.-LB 4905")
 - ⊙ = PERMANENT CONTROL POINT - FOUND (METAL MARKER WITH A METAL DISK STAMPED "P.C.P.-L.S. 3913")
 - ⊠ = PERMANENT REFERENCE MONUMENT - SET (4"x4" CONCRETE MARKER WITH METAL DISK STAMPED "P.R.M.-LB 4905")
 - △ = PERMANENT REFERENCE MONUMENT - SET (NAIL AND METAL DISK STAMPED "P.R.M.-L.B. 4905")
 - = PERMANENT REFERENCE MONUMENT - FOUND (4"x4" CONCRETE MARKER WITH METAL DISK STAMPED "P.R.M.-L.S. 3913")
- AL = ARC LENGTH OF CURVE
R = RADIUS OF CURVE
Del = CENTRAL ANGLE OF CURVE
Ch = CHORD LENGTH OF CURVE
CB = CHORD BEARING OF CURVE
RB = RADIAL BEARING
(NR) = NON RADIAL LINE
P.O.B. = POINT OF BEGINNING
P.O.C. = POINT OF COMMENCEMENT
PC = POINT OF CURVATURE
C# = CURVE TABLE LABEL
L# = LINE TABLE LABEL
R/W = RIGHT OF WAY
D.E. = DRAINAGE EASEMENT
P.U.&D.E. = PUBLIC UTILITY & DRAINAGE EASEMENT
O.R.B. = OFFICIAL RECORD BOOK
P.A.E. = PRIVATE ACCESS EASEMENT
U.E. = UTILITY EASEMENT

UNPLATTED

UNPLATTED

(NOT TO SCALE)

TRACT AREA SUMMARY

| TRACT ID | AREA (ACRES) | USE OF TRACT | OWNERSHIP & MAINTENANCE ENTITY |
|----------|--------------|---|--|
| A | 0.07 | STORMWATER, SIDEWALK, PEDESTRIAN ACCESS | LENNAR HOMES INC., ITS SUCCESSORS AND/OR ASSIGNS |
| OS-2 | 0.07 | SEE NOTE 15 | LENNAR HOMES INC., ITS SUCCESSORS AND/OR ASSIGNS |
| OS-7 | 1.96 | SEE NOTE 14 | LENNAR HOMES INC., ITS SUCCESSORS AND/OR ASSIGNS |
| OS-8A | 0.07 | SEE NOTE 15 | LENNAR HOMES INC., ITS SUCCESSORS AND/OR ASSIGNS |
| OS-8B | 0.07 | SEE NOTE 15 | LENNAR HOMES INC., ITS SUCCESSORS AND/OR ASSIGNS |
| R | 7.36 | VEHICULAR AND PEDESTRIAN ACCESS, UTILITIES, DRAINAGE, SIDEWALKS | LENNAR HOMES INC., ITS SUCCESSORS AND/OR ASSIGNS |

THIS PLAT PREPARED BY -
SCOTT M. GLAUBITZ, PROFESSIONAL LAND SURVEYOR
FLORIDA CERTIFICATION No. 4151
B.S.E. CONSULTANTS, INC. LB No. 4905

B.S.E. CONSULTANTS, INC.
CONSULTING - ENGINEERING - LAND SURVEYING
312 SOUTH HARBOR CITY BOULEVARD, SUITE 4
MELBOURNE, FLORIDA PHONE: (321) 725-3674 FAX: (321) 723-1159
CERTIFICATE OF BUSINESS AUTHORIZATION #4905
CERTIFICATE OF LAND SURVEYING BUSINESS AUTHORIZATION #R0004905

DATE: 10/07/04
NOTICE: THIS PLAT, AS RECORDED IN ITS GRAPHIC FORM, IS THE OFFICIAL DEPICTION OF THE SUBDIVIDED LANDS DESCRIBED HEREIN AND WILL IN NO CIRCUMSTANCES BE SUPPLANTED IN AUTHORITY BY ANY OTHER GRAPHIC OR DIGITAL FORM OF THE PLAT. THERE MAY BE ADDITIONAL RESTRICTIONS THAT ARE NOT RECORDED ON THIS PLAT THAT MAY BE FOUND IN THE PUBLIC RECORDS OF THIS COUNTY.