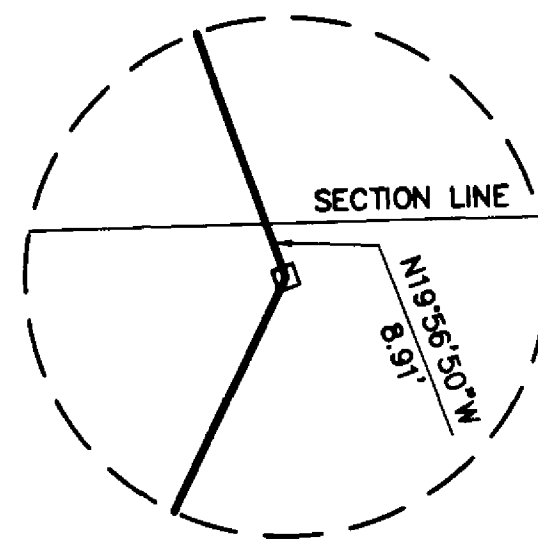


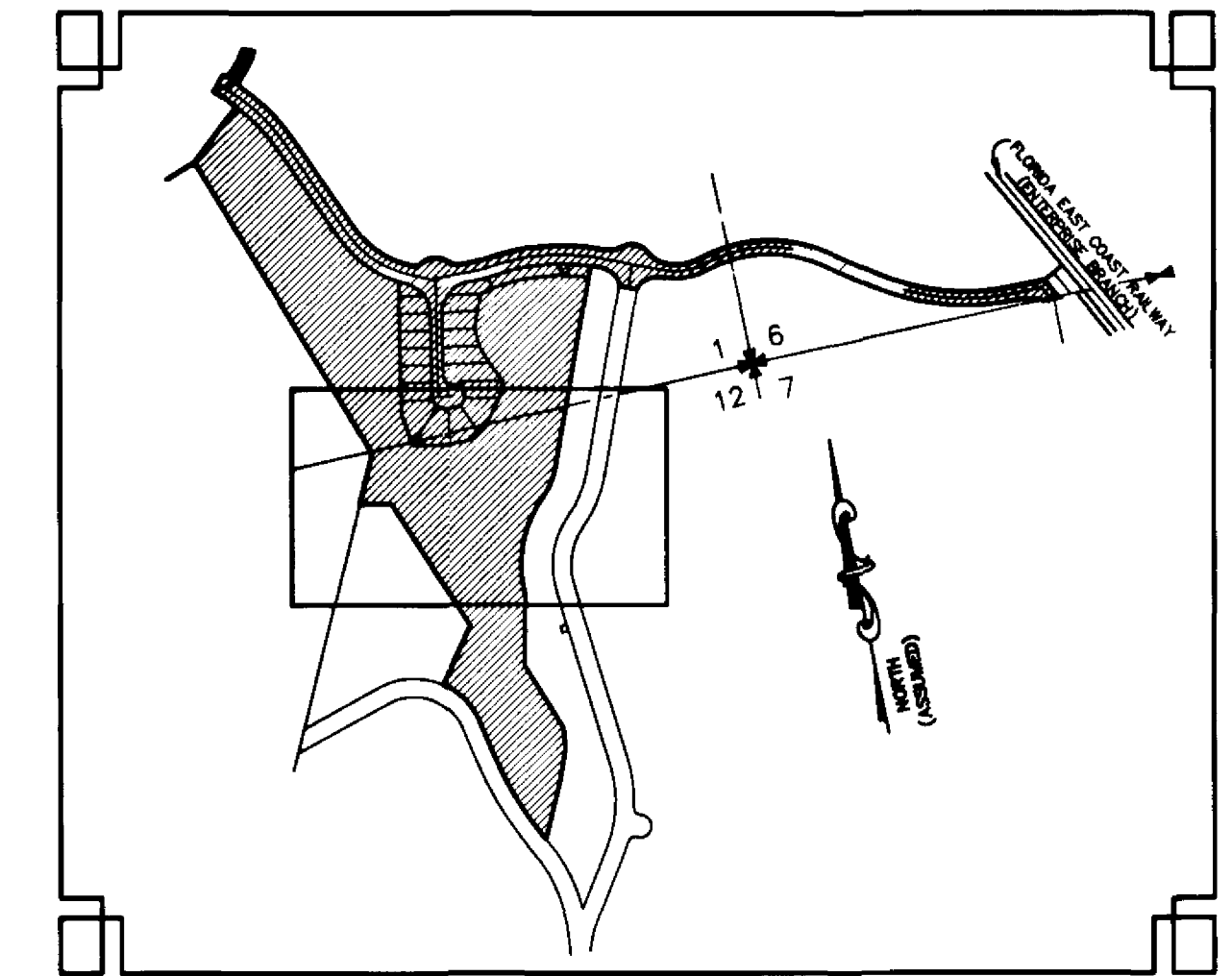
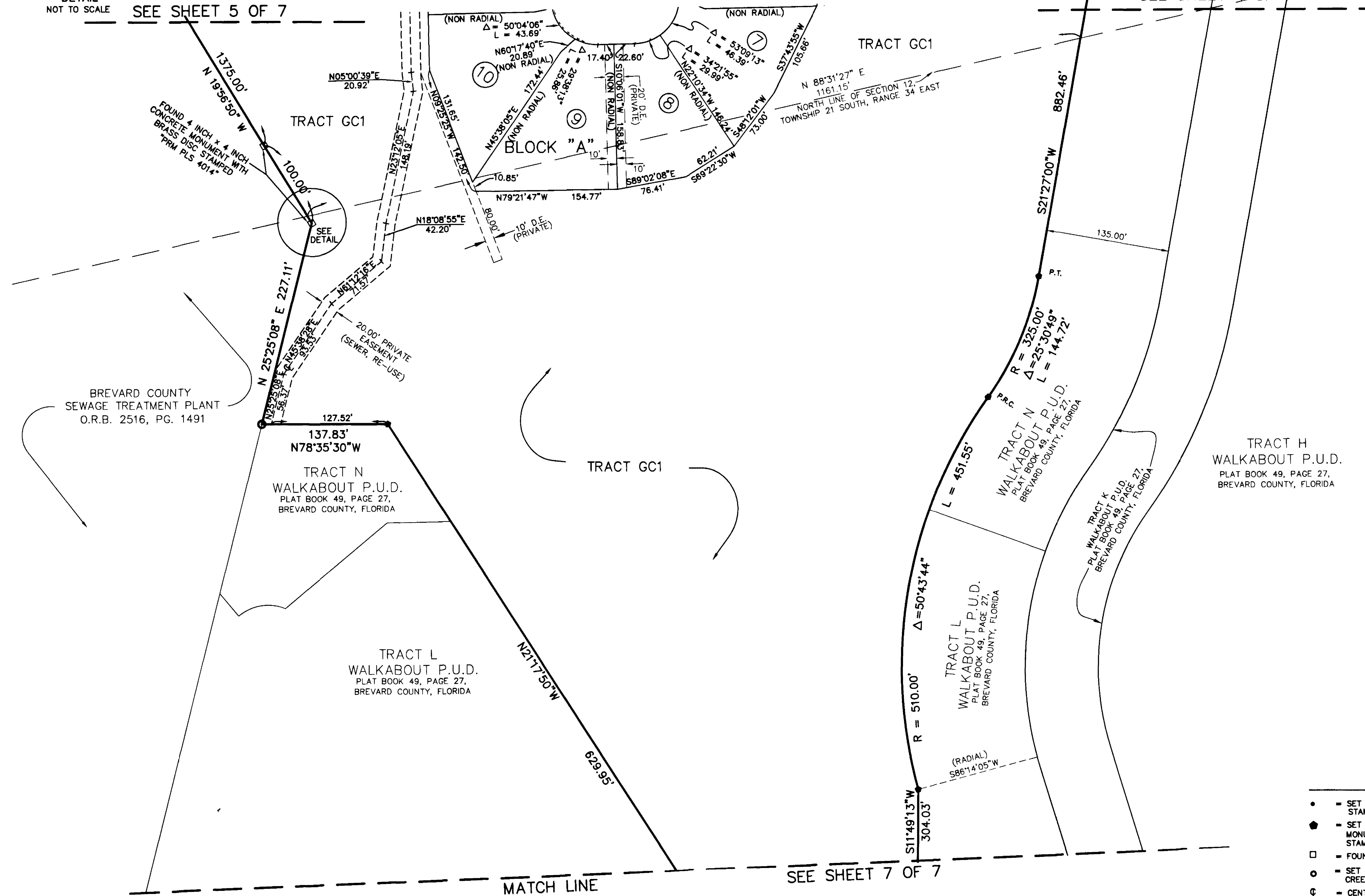
QUANTUM PLACE AT WALKABOUT (POD 9)

BEING A REPLAT OF A PORTION OF TRACTS K, L, M AND N, WALKABOUT P.U.D.
AS RECORDED IN PLAT BOOK 49, PAGE 27
OF THE PUBLIC RECORDS OF BREVARD COUNTY, FLORIDA,
LYING IN SECTIONS 1 AND 12, TOWNSHIP 21 SOUTH, RANGE 34 EAST
AND SECTION 6, TOWNSHIP 21 SOUTH, RANGE 35 EAST

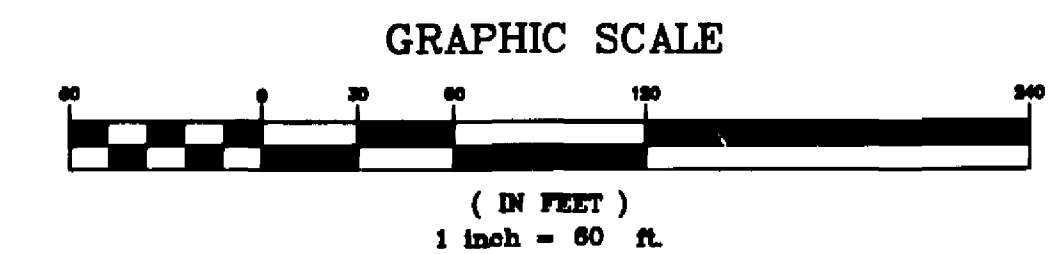
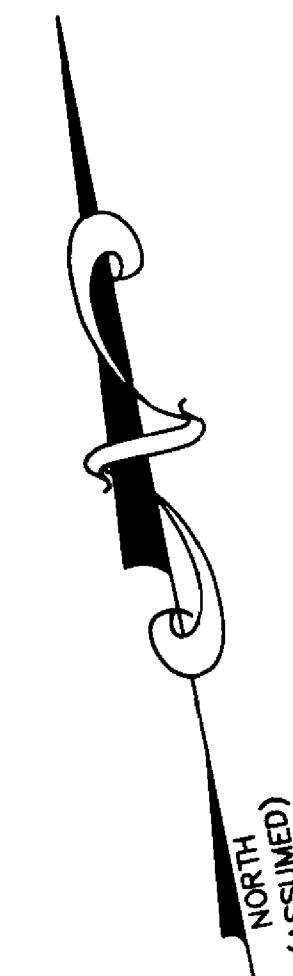


DETAIL
NOT TO SCALE SEE SHEET 5 OF 7

SEE SHEET 4 OF 7



KEY MAP
1" = 800'



NOTE:
ALL RIGHT OF WAYS HAVE BEEN MONUMENTED WITH 4 INCH DIAMETER ROUND CONCRETE MONUMENT WITH 2 1/2 INCH ALUMINUM DISC STAMPED CREECH LB 6705 PRM.

LEGEND

- = SET MAG NAIL WITH ALUMINUM DISC STAMPED CREECH LB 6705 PCP
- = SET 4 INCH DIAMETER ROUND CONCRETE MONUMENT WITH 2 1/2 INCH ALUMINUM DISC STAMPED LB 6705 PRM
- = FOUND CONCRETE MONUMENT
- = SET 5/8 INCH IRON ROD AND CAP STAMPED CREECH ENG. LB 6705 PCP
- ⊙ = CENTERLINE
- R = CURVE RADIUS
- Δ = CURVE CENTRAL ANGLE
- L = LENGTH OF ARC
- O.R.B. = OFFICIAL RECORD BOOK
- PG. = PAGE
- P.B. = PLAT BOOK
- U.E. = UTILITY EASEMENT
- D.E. = DRAINAGE EASEMENT
- PCP = PERMANENT CONTROL POINT
- PRM = PERMANENT REFERENCE MONUMENT
- LB = LICENSED BUSINESS
- P.C. = POINT OF CURVATURE
- P.T. = POINT OF TANGENCY
- P.R.C. = POINT OF REVERSE CURVATURE
- P.C.C. = POINT OF COMPOUND CURVATURE
- TWP. = TOWNSHIP
- RGE. = RANGE
- CHB = CHORD BEARING
- CHD = CHORD LENGTH
- POC = POINT OF COMMENCEMENT
- POB = POINT OF BEGINNING

CREECH ENGINEERS, INC.
CIVILIZATION ENGINEERED
4450 WEST EAU GALLIE BLVD., MELBOURNE, FL 32934 (321) 255-5434
203 WEST 3rd STREET STUART, FLORIDA 34994 (772) 283-1413
707 EAST PARK AVENUE, TALLAHASSEE, FL 32301 (850) 841-1705
BOARD OF PROFESSIONAL ENGINEERS, CERTIFICATE OF AUTHORIZATION NUMBER 5139
PROFESSIONAL SURVEYORS AND MAPPERS, LICENSED CERTIFICATE NO. LB-0006705