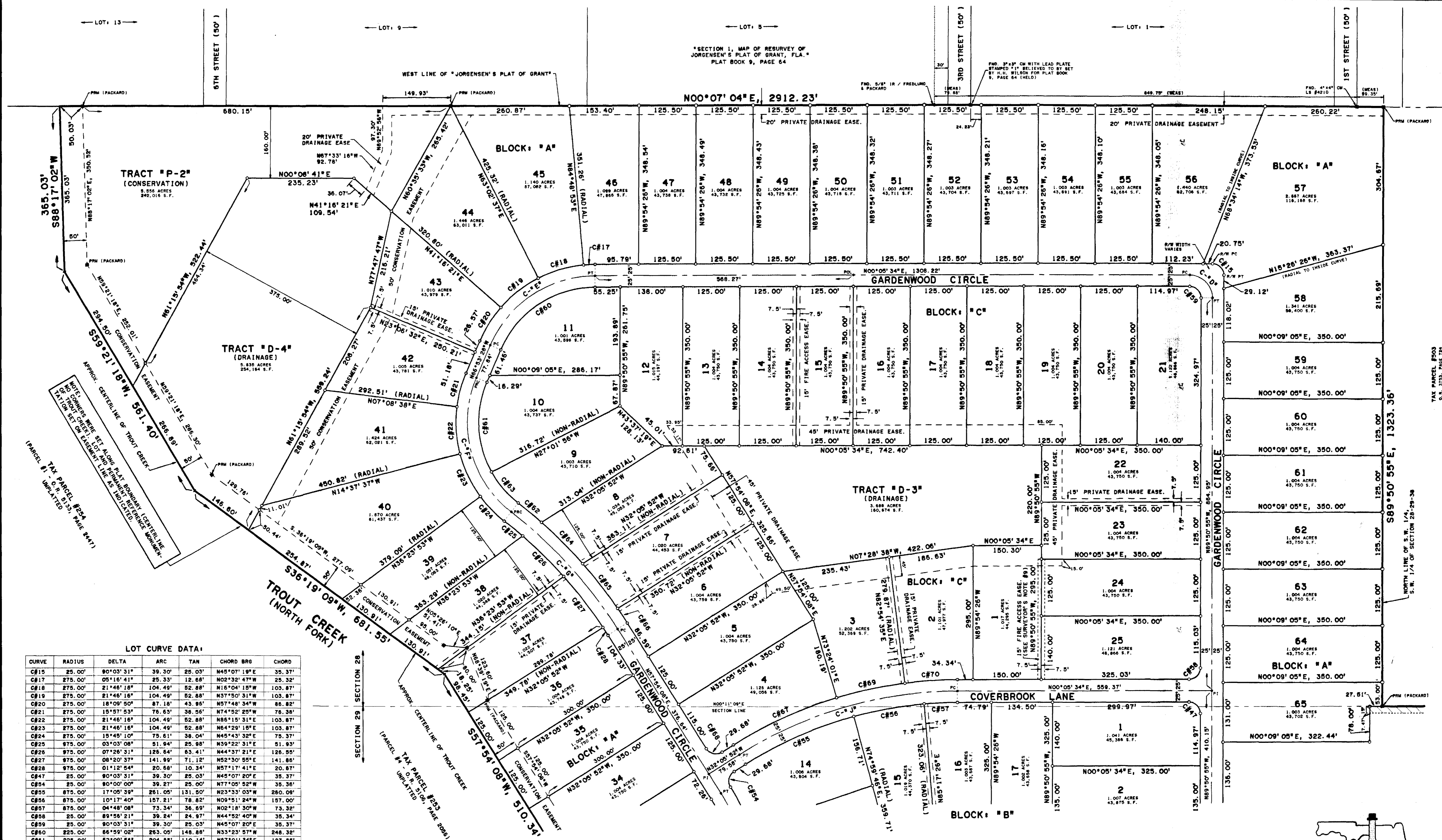


CYPRESS CREEK SUBDIVISION, PHASE TWO

A SUBDIVISION LYING IN SECTIONS 28 AND 29, TOWNSHIP 29 SOUTH, RANGE 38 EAST, BREVARD COUNTY, FLORIDA BEING ALSO A "REPLAT" OF PORTIONS OF "FLORIDA INDIAN RIVER LAND CO." SUBDIVISION OF SECTION 29, TOWNSHIP 29 SOUTH, RANGE 38 EAST, AS RECORDED IN PLAT BOOK 1, PAGE 166.

PLAT BOOK 52 PAGE 49
SHEET 4 OF 4
SEC. 28 & 29, TWP. 29 S., RGE. 38 E.



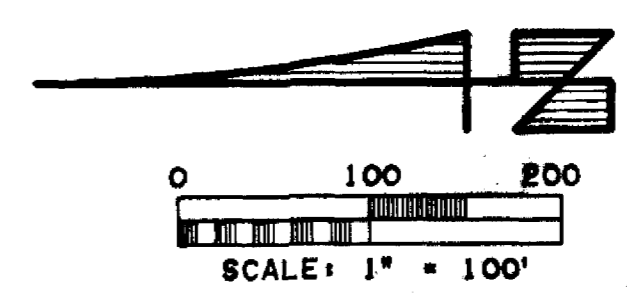
LOT CURVE DATA:

CURVE	RADIUS	DELTA	ARC	TAN	CHORD BRG	CHORD
C#15	25.00'	90°03'31"	39.30'	25.00'	N45°07'19"E	35.37'
C#17	275.00'	05°16'41"	25.33'	12.68'	N02°32'47"W	25.32'
C#18	275.00'	21°46'16"	104.49'	52.88'	N16°04'19"W	103.87'
C#19	275.00'	21°46'16"	104.49'	52.88'	N37°50'31"W	103.87'
C#20	275.00'	18°09'50"	87.18'	43.95'	N57°48'34"W	86.82'
C#21	275.00'	15°57'53"	76.65'	38.56'	N74°52'25"W	76.38'
C#22	275.00'	21°46'16"	104.49'	52.88'	N86°15'31"E	103.87'
C#23	275.00'	21°46'16"	104.49'	52.88'	N64°29'18"E	103.87'
C#24	275.00'	15°45'10"	75.61'	38.04'	N45°43'32"E	75.37'
C#25	275.00'	03°03'08"	51.94'	25.98'	N39°22'31"E	51.93'
C#26	275.00'	07°26'31"	126.64'	63.41'	N44°37'21"E	126.55'
C#27	275.00'	08°20'37"	141.99'	71.12'	N52°30'55"E	141.88'
C#28	275.00'	01°12'54"	20.68'	10.34'	N57°17'41"E	20.67'
C#47	25.00'	90°03'31"	39.30'	25.00'	N45°07'20"E	35.37'
C#54	25.00'	90°00'00"	39.27'	25.00'	N77°05'52"W	35.36'
C#55	275.00'	17°05'39"	261.05'	131.50'	N23°33'03"W	280.09'
C#56	275.00'	10°17'40"	157.21'	78.82'	N09°51'24"W	157.00'
C#57	275.00'	04°48'08"	73.34'	36.69'	N02°18'30"W	73.32'
C#58	25.00'	89°55'21"	39.24'	24.97'	N44°52'40"W	35.34'
C#59	25.00'	90°03'31"	39.30'	25.00'	N45°07'20"E	35.37'
C#60	225.00'	66°59'02"	263.05'	148.88'	N33°23'57"W	248.32'
C#61	225.00'	52°09'56"	204.85'	110.14'	N87°01'34"E	197.85'
C#62	1025.00'	03°42'38"	66.38'	33.20'	N39°42'18"E	66.37'
C#63	1025.00'	23°05'39"	80.69'	45.97'	N49°23'46"E	90.08'
C#64	1025.00'	07°11'08"	128.25'	64.21'	N45°08'39"E	128.18'
C#65	1025.00'	07°10'33"	128.69'	62.92'	N52°14'29"E	125.61'
C#66	1025.00'	02°08'52"	38.42'	19.21'	N86°49'42"E	38.42'
C#67	925.00'	15°29'53"	250.20'	125.87'	N24°20'55"W	249.44'
C#68	25.00'	89°59'58"	39.27'	25.00'	N12°54'08"E	35.36'
C#69	925.00'	09°30'33"	153.52'	76.94'	N11°50'42"W	163.34'
C#70	925.00'	07°11'00"	118.97'	58.06'	N03°29'55"W	118.89'

CENTERLINE CURVE DATA:

CURVE	RADIUS	DELTA	ARC	TAN	CHORD BRG	CHORD
C-0"	50.00'	90°03'31"	78.59'	50.05'	N45°07'20"E	70.75'
C-1"	250.00'	66°59'02"	292.27'	165.42'	N33°23'57"E	275.91'
C-2"	250.00'	76°15'35"	328.38'	192.73'	N75°28'44"E	305.28'
C-3"	1000.00'	20°03'11"	349.99'	176.81'	N47°52'32"E	348.21'
C-4"	900.00'	32°11'28"	505.65'	259.69'	N16°00'09"W	499.03'

SEE SHEET 3 OF 4



r.m. packard
surveying & mapping
1013 Rockledge Drive
Rockledge, FL 32955
Tel: (321) 632-4335