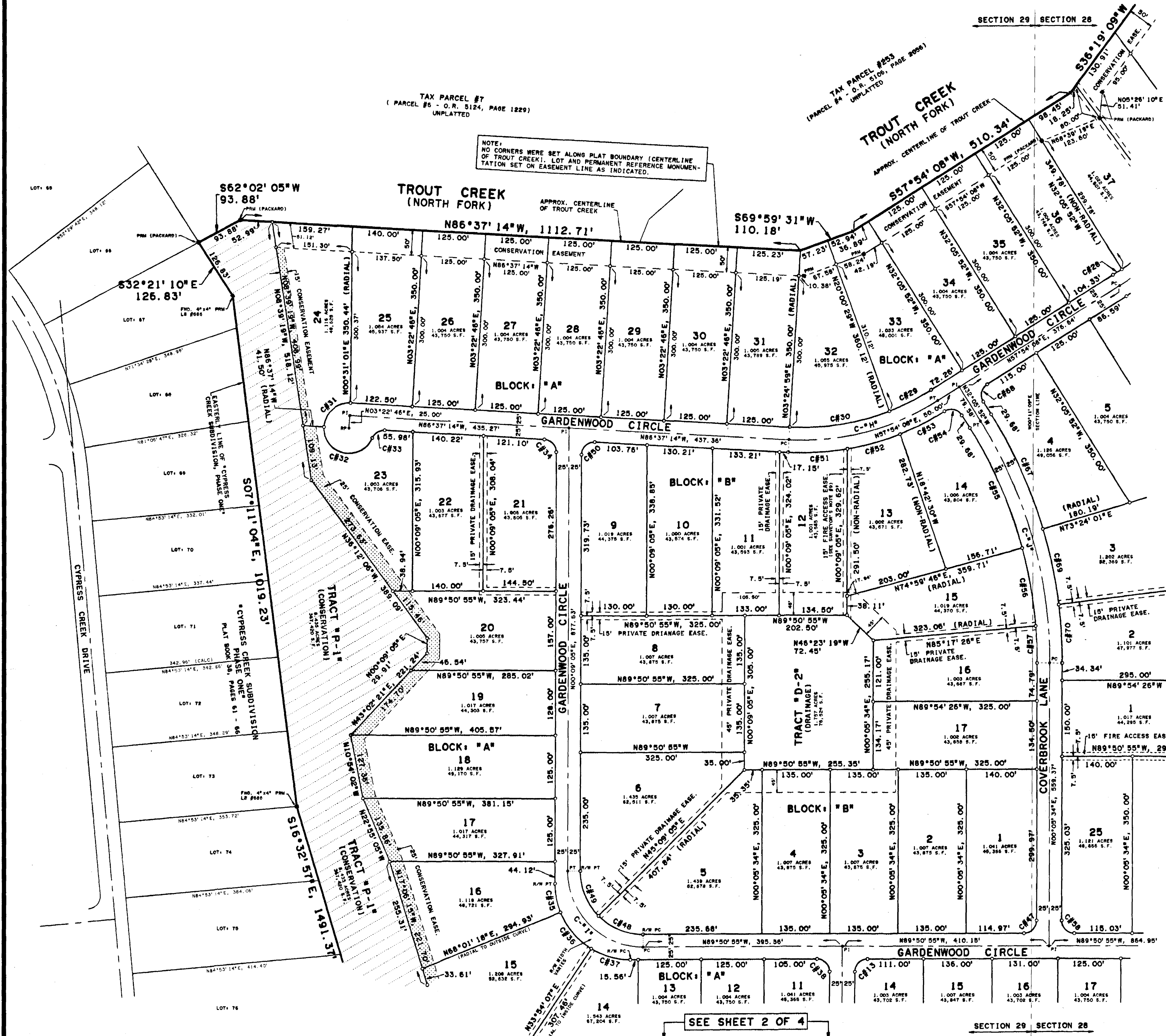


CYPRESS CREEK SUBDIVISION, PHASE TWO

A SUBDIVISION LYING IN SECTIONS 28 AND 29, TOWNSHIP 29 SOUTH, RANGE 38 EAST, BREVARD COUNTY, FLORIDA BEING ALSO A "REPLAT" OF PORTIONS OF "FLORIDA INDIAN RIVER LAND CO." SUBDIVISION OF SECTION 29, TOWNSHIP 29 SOUTH, RANGE 38 EAST, AS RECORDED IN PLAT BOOK 1, PAGE 166.



LOT CURVE DATA:

CURVE	RADIUS	DELTA	ARC	TAN	CHORD BRG	CHORD
CF1	50.00'	90°00'00"	78.54'	50.00'	N44°57'37"W	70.71'
CF2	300.00'	23°04'13"	120.60'	61.23'	N78°30'16"E	119.98'
CF3	300.00'	21°48'16"	113.99'	57.69'	N56°08'02"E	113.31'
CF4	300.00'	21°48'16"	113.99'	57.69'	N34°18'46"E	113.31'
CF5	300.00'	21°38'55"	113.35'	57.36'	N12°36'11"E	112.68'
CF6	300.00'	28°22'28"	148.57'	87.10'	N12°24'31"W	147.05'
CF7	600.00'	12°45'42"	133.64'	67.10'	N20°12'54"W	133.36'
CF8	600.00'	12°04'33"	128.48'	63.46'	N07°47'46"W	126.22'
CF9	600.00'	11°59'18"	129.54'	63.00'	N04°14'09"E	126.31'
CF10	600.00'	06°18'49"	86.10'	33.09'	N13°23'11"E	66.07'
CF11	650.00'	06°29'38"	82.33'	31.20'	N13°17'48"E	62.30'
CF12	25.00'	90°03'31"	95.01'	47.63'	N05°06'01"E	94.90'
CF13	25.00'	80°03'31"	39.27'	25.00'	N45°09'06"E	35.36'
CF14	25.00'	05°18'41"	25.33'	12.68'	N02°32'47"W	25.32'
CF15	275.00'	21°48'16"	104.49'	52.88'	N16°04'18"W	103.87'
CF16	275.00'	18°09'50"	87.18'	43.96'	N37°50'31"W	86.82'
CF17	275.00'	15°57'53"	76.63'	38.56'	N74°52'25"W	76.38'
CF18	275.00'	21°48'16"	104.49'	52.88'	N06°15'31"E	103.87'
CF19	275.00'	18°09'50"	87.18'	43.96'	N57°48'34"W	86.82'
CF20	275.00'	15°57'53"	76.63'	38.56'	N74°52'25"W	76.38'
CF21	275.00'	21°48'16"	104.49'	52.88'	N64°29'16"E	103.87'
CF22	275.00'	18°09'50"	87.18'	43.96'	N45°43'32"E	75.37'
CF23	275.00'	15°57'53"	76.63'	38.56'	N39°22'31"E	61.85'
CF24	275.00'	03°03'08"	128.64'	63.41'	N44°37'21"E	126.55'
CF25	275.00'	09°20'37"	141.99'	71.12'	N52°30'55"E	141.86'
CF26	475.00'	01°12'54"	20.88'	10.34'	N87°17'41"E	20.67'
CF27	475.00'	11°08'48"	92.41'	46.35'	N63°28'31"E	92.26'
CF28	475.00'	24°19'52"	201.71'	102.40'	N81°12'50"E	200.20'
CF29	50.00'	90°00'00"	78.54'	50.00'	N48°22'46"E	70.71'
CF30	50.00'	150°31'44"	140.09'	291.42'	N76°53'06"W	98.56'
CF31	25.00'	70°31'46"	30.77'	17.68'	N58°06'56"E	28.87'
CF32	25.00'	85°48'19"	37.86'	23.63'	N43°14'05"W	34.35'
CF33	175.00'	25°12'04"	78.97'	39.12'	N12°26'57"W	76.35'
CF34	175.00'	31°02'54"	94.83'	48.81'	N40°34'26"W	93.68'
CF35	25.00'	90°00'00"	39.27'	25.00'	N71°37'20"W	35.36'
CF36	25.00'	80°00'00"	39.27'	25.00'	N44°50'52"W	35.36'
CF37	500.00'	14°09'13"	123.51'	62.07'	N07°13'43"E	123.20'
CF38	500.00'	02°14'14"	19.82'	9.76'	N15°25'26"E	19.52'
CF39	650.00'	09°33'54"	108.51'	54.38'	N11°45'37"E	108.38'
CF40	650.00'	11°02'18"	123.23'	62.81'	N01°27'31"E	123.03'
CF41	650.00'	11°51'59"	127.06'	63.73'	N09°38'38"W	126.86'
CF42	650.00'	11°20'07"	128.59'	64.51'	N20°55'41"W	128.39'
CF43	250.00'	61°51'41"	209.92'	149.80'	N04°20'06"E	257.00'
CF44	250.00'	54°48'27"	239.00'	129.52'	N62°39'09"E	230.00'
CF45	25.00'	90°03'31"	39.30'	25.00'	N45°07'20"E	35.37'
CF46	125.00'	44°59'59"	98.17'	51.78'	N67°20'54"W	95.67'
CF47	125.00'	45°00'00"	98.17'	51.78'	N22°20'55"W	95.67'
CF48	25.00'	93°13'41"	40.68'	26.45'	N46°45'56"E	36.34'
CF49	525.00'	12°51'24"	117.81'	59.15'	N86°57'04"E	117.56'
CF50	525.00'	11°51'55"	108.72'	64.56'	N74°35'24"E	108.53'
CF51	525.00'	10°48'19"	98.55'	49.42'	N63°16'47"E	98.41'
CF52	25.00'	90°00'00"	39.27'	25.00'	N77°05'52"W	35.36'
CF53	875.00'	17°09'39"	261.05'	131.50'	N23°33'03"W	260.00'
CF54	875.00'	10°17'40"	157.21'	78.82'	N09°51'24"W	157.00'
CF55	875.00'	04°48'08"	73.34'	36.69'	N02°18'30"W	73.34'
CF56	25.00'	89°56'21"	39.24'	24.97'	N44°52'40"W	35.34'
CF57	25.00'	90°03'31"	39.30'	25.00'	N45°07'20"E	35.37'
CF58	225.00'	66°59'02"	263.05'	148.88'	N33°23'57"W	248.32'
CF59	225.00'	52°09'58"	204.85'	110.14'	N87°01'34"E	197.85'
CF60	1025.00'	03°42'38"	66.38'	33.20'	N39°42'18"E	66.37'
CF61	225.00'	23°09'39"	80.69'	45.97'	N49°23'46"E	90.06'
CF62	1025.00'	07°10'08"	128.25'	64.21'	N45°08'39"E	128.16'
CF63	1025.00'	02°08'33"	125.69'	62.92'	N52°14'29"E	125.61'
CF64	1025.00'	02°08'33"	38.42'	19.21'	N24°49'42"E	38.42'
CF65	925.00'	15°29'53"	250.20'	125.87'	N24°20'55"W	249.44'
CF66	25.00'	89°59'56"	39.27'	25.00'	N12°54'06"E	35.36'
CF67	925.00'	09°30'33"	153.52'	76.94'	N11°50'42"W	153.34'
CF68	925.00'	07°11'00"	115.97'	58.06'	N03°29'56"W	115.89'
CF69	175.00'	02°42'06"	8.25'	4.13'	N88°29'50"W	8.25'

CENTERLINE CURVE DATA:

CURVE	RADIUS	DELTA	ARC	TAN	CHORD BRG	CHORD
C-A	275.00'	116°38'09"	559.61'	445.57'	N31°43'20"E	468.04'
C-B	625.00'	43°08'18"	470.57'	247.07'	N05°01'36"W	459.53'
C-C	525.00'	16°23'27"	150.19'	75.61'	N08°20'50"E	149.68'
C-D	50.00'	90°03'31"	78.59'	50.00'	N45°07'20"E	70.75'
C-E	250.00'	66°59'02"	292.27'	165.42'	N33°23'57"E	275.91'
C-F	250.00'	75°15'35"	328.38'	192.73'	N15°28'44"E	305.26'
C-G	1000.00'	20°03'11"	349.99'	176.61'	N47°52'32"E	348.21'
C-H	500.00'	35°28'38"	308.60'	159.94'	N75°38'27"E	304.68'
C-I	150.00'	90°00'00"	235.62'	150.00'	N44°50'54"W	212.13'
C-J	900.00'	32°11'26"	605.65'	259.69'	N16°00'09"W	499.03'

SEE SHEET 4 OF 4

SEE SHEET 2 OF 4

r.m. packard
surveying & mapping
INC.
1013 Rockledge Drive
Rockledge, Florida 32955
Tel.: (321) 632-3335