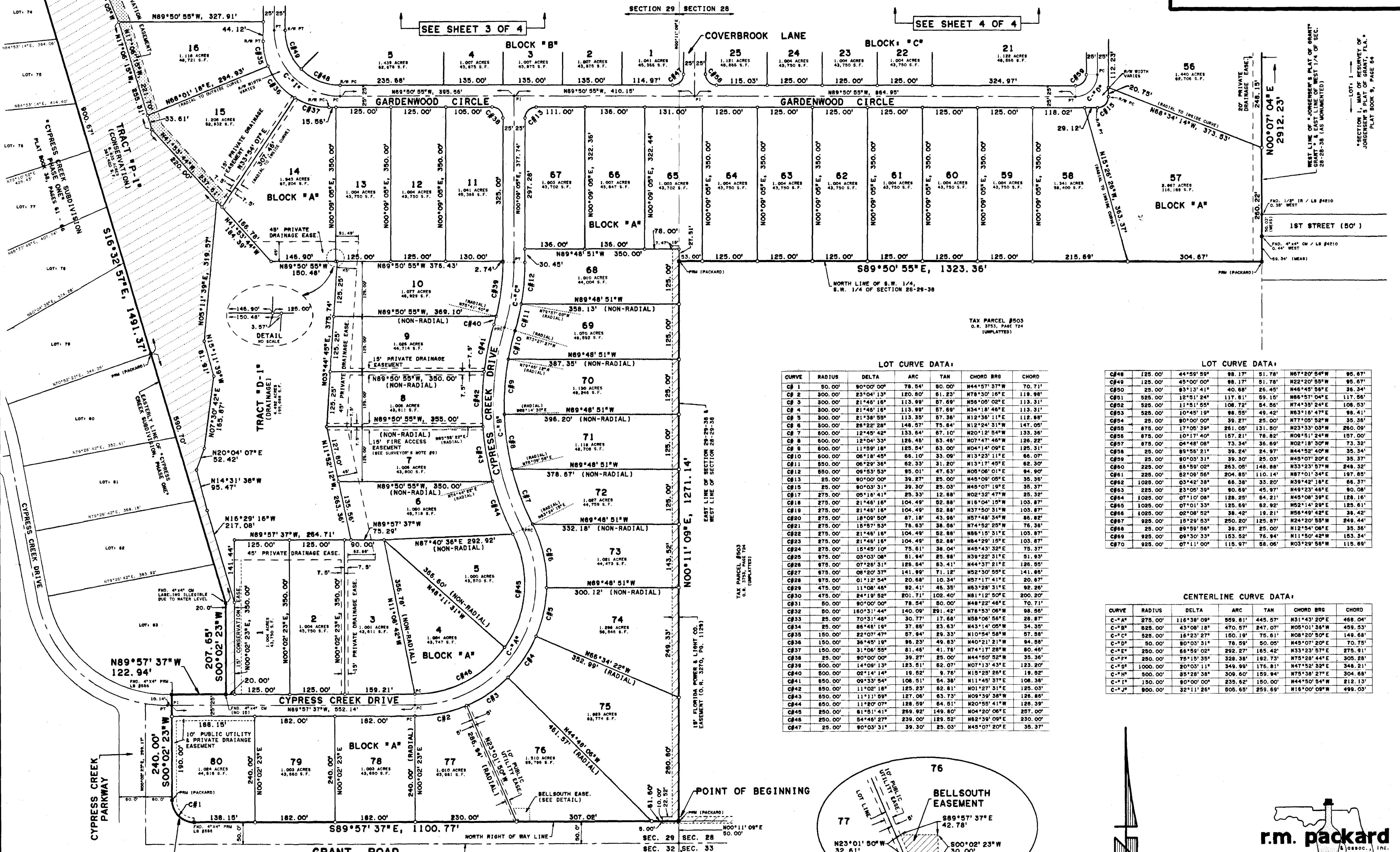


# CYPRESS CREEK SUBDIVISION, PHASE TWO

A SUBDIVISION LYING IN SECTIONS 28 AND 29, TOWNSHIP 29 SOUTH, RANGE 38 EAST, BREVARD COUNTY, FLORIDA BEING ALSO A "REPLAT" OF PORTIONS OF "FLORIDA INDIAN RIVER LAND CO." SUBDIVISION OF SECTION 29, TOWNSHIP 29 SOUTH, RANGE 38 EAST, AS RECORDED IN PLAT BOOK 1, PAGE 166.



**LOT CURVE DATA:**

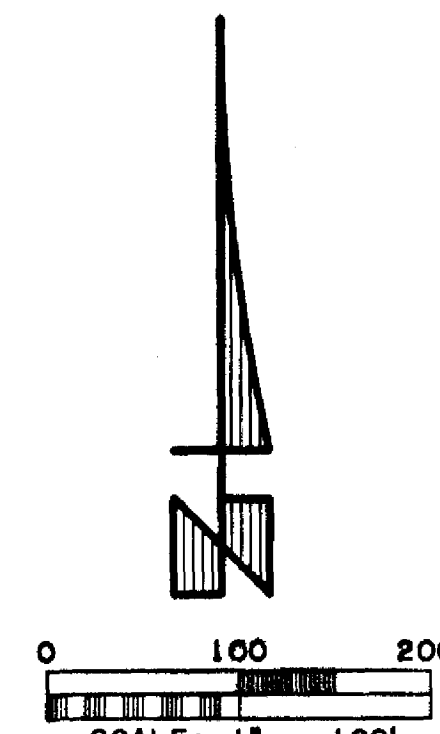
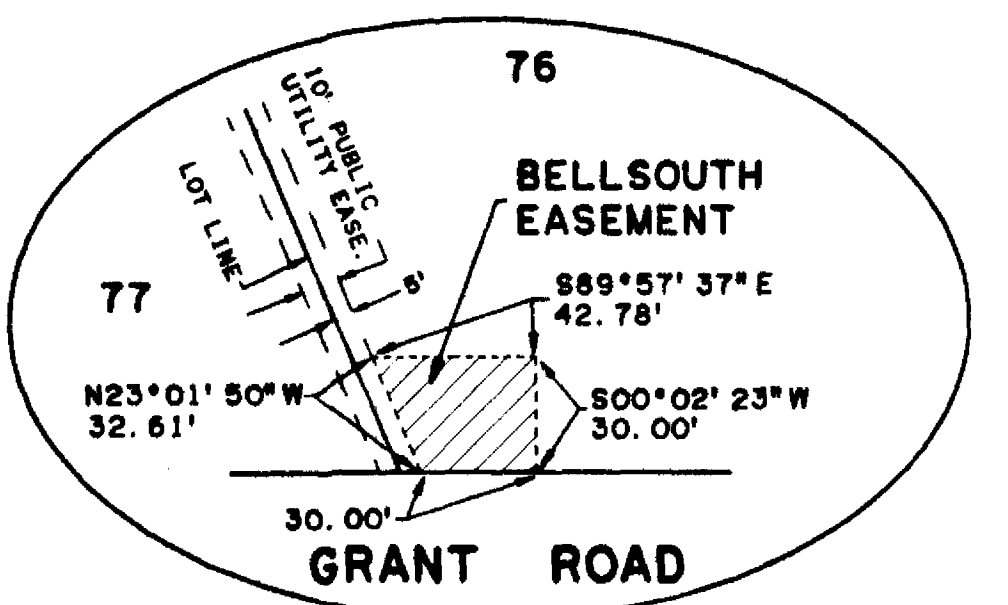
CURVE	RADIUS	DELTA	ARC	TAN	CHORD BRG	CHORD
C#1	50.00'	90°00'00"	78.54'	80.00'	N44°57'37"W	70.71'
C#2	300.00'	23°04'13"	120.80'	61.23'	N78°30'16"E	119.98'
C#3	300.00'	21°46'16"	113.99'	67.69'	N56°05'02"E	113.31'
C#4	300.00'	21°46'16"	113.99'	67.69'	N34°18'46"E	113.31'
C#5	300.00'	21°38'55"	113.35'	67.36'	N12°36'11"E	112.68'
C#6	300.00'	26°22'28"	148.57'	75.84'	N12°24'31"W	147.05'
C#7	300.00'	12°45'42"	133.64'	67.10'	N02°12'54"W	133.36'
C#8	300.00'	12°04'33"	126.46'	63.46'	N07°47'46"W	126.22'
C#9	300.00'	11°59'18"	125.54'	63.00'	N04°14'09"E	125.31'
C#10	300.00'	06°18'45"	66.10'	33.09'	N13°23'11"E	65.07'
C#11	300.00'	06°29'36"	62.33'	31.20'	N13°17'45"E	62.30'
C#12	300.00'	09°53'53"	95.01'	47.63'	N08°06'01"E	84.90'
C#13	25.00'	90°00'00"	39.27'	25.00'	N48°09'05"E	35.36'
C#14	25.00'	90°03'31"	39.30'	25.03'	N48°07'19"E	35.37'
C#15	275.00'	05°18'41"	25.33'	12.68'	N02°32'47"W	25.32'
C#16	275.00'	21°46'16"	104.49'	62.88'	N16°04'15"W	103.87'
C#17	275.00'	21°46'16"	104.49'	62.88'	N37°50'31"W	103.87'
C#18	275.00'	18°09'50"	87.18'	43.58'	N57°48'34"W	86.82'
C#19	275.00'	15°57'53"	76.63'	38.56'	N74°52'28"W	76.36'
C#20	275.00'	18°09'50"	87.18'	43.58'	N57°48'34"W	86.82'
C#21	275.00'	15°57'53"	76.63'	38.56'	N74°52'28"W	76.36'
C#22	275.00'	21°46'16"	104.49'	62.88'	N88°15'31"E	103.87'
C#23	275.00'	21°46'16"	104.49'	62.88'	N64°29'15"E	103.87'
C#24	275.00'	15°45'10"	75.61'	38.04'	N45°43'32"E	75.37'
C#25	975.00'	03°03'08"	81.84'	25.88'	N39°22'31"E	81.93'
C#26	975.00'	07°26'31"	126.64'	63.41'	N44°37'21"E	126.95'
C#27	975.00'	06°20'37"	141.99'	71.12'	N52°30'55"E	141.86'
C#28	975.00'	01°12'54"	20.68'	10.34'	N57°17'41"E	20.67'
C#29	475.00'	11°08'48"	92.41'	46.35'	N63°28'31"E	92.26'
C#30	475.00'	24°19'52"	201.71'	102.40'	N81°12'50"E	200.20'
C#31	50.00'	90°00'00"	78.54'	80.00'	N48°22'46"E	70.71'
C#32	50.00'	160°31'44"	140.09'	291.42'	N76°53'06"W	98.56'
C#33	25.00'	70°31'46"	30.77'	17.66'	N58°06'56"E	28.87'
C#34	25.00'	86°46'19"	37.86'	23.63'	N43°14'05"W	34.35'
C#35	150.00'	22°07'47"	67.94'	29.33'	N10°54'58"W	67.58'
C#36	150.00'	36°45'19"	95.23'	49.63'	N40°21'21"W	94.58'
C#37	150.00'	31°06'55"	81.46'	41.76'	N74°17'28"W	80.46'
C#38	25.00'	90°00'00"	39.27'	25.00'	N44°50'52"W	35.36'
C#39	500.00'	14°09'13"	123.51'	62.07'	N07°13'43"E	123.20'
C#40	500.00'	02°14'14"	19.82'	9.76'	N15°25'26"E	19.52'
C#41	550.00'	09°33'54"	108.51'	64.38'	N11°45'37"E	108.38'
C#42	550.00'	11°02'18"	125.23'	62.81'	N01°27'31"E	125.03'
C#43	550.00'	11°11'09"	127.06'	63.73'	N09°39'38"W	126.86'
C#44	550.00'	11°20'07"	128.59'	64.51'	N20°55'41"W	128.39'
C#45	250.00'	61°51'41"	259.92'	149.80'	N04°20'06"E	257.00'
C#46	250.00'	54°48'27"	239.00'	129.52'	N62°39'09"E	230.00'
C#47	25.00'	90°03'31"	39.30'	25.03'	N48°07'20"E	35.37'

**LOT CURVE DATA:**

CURVE	RADIUS	DELTA	ARC	TAN	CHORD BRG	CHORD
C#48	125.00'	44°59'59"	98.17'	51.78'	N67°20'54"W	95.67'
C#49	125.00'	45°00'00"	98.17'	51.78'	N22°20'53"W	95.67'
C#50	25.00'	93°13'41"	40.68'	26.45'	N46°45'56"E	36.34'
C#51	525.00'	12°51'24"	117.61'	59.15'	N66°57'04"E	117.56'
C#52	525.00'	11°51'55"	108.72'	54.86'	N74°35'24"E	108.53'
C#53	525.00'	10°45'19"	98.55'	49.42'	N63°18'47"E	98.41'
C#54	25.00'	90°00'00"	39.27'	25.00'	N77°05'52"W	35.36'
C#55	875.00'	17°05'39"	261.05'	131.50'	N23°33'03"W	260.09'
C#56	875.00'	10°17'40"	157.21'	78.82'	N09°51'24"W	157.00'
C#57	875.00'	04°48'08"	73.34'	36.69'	N02°18'30"W	73.32'
C#58	25.00'	89°55'21"	39.24'	24.93'	N44°52'40"W	35.34'
C#59	25.00'	90°03'31"	39.30'	25.03'	N45°07'20"E	35.37'
C#60	225.00'	66°59'02"	263.05'	148.08'	N33°23'57"W	248.32'
C#61	225.00'	62°09'56"	204.85'	110.14'	N87°01'34"E	197.85'
C#62	1025.00'	03°42'38"	66.38'	33.20'	N39°42'16"E	66.37'
C#63	225.00'	23°05'39"	90.69'	45.97'	N49°23'46"E	90.08'
C#64	1025.00'	07°01'08"	128.25'	64.21'	N45°08'39"E	128.16'
C#65	1025.00'	07°01'33"	128.69'	62.92'	N52°14'29"E	128.61'
C#66	1025.00'	02°08'52"	38.42'	19.21'	N56°49'42"E	38.42'
C#67	925.00'	15°29'53"	250.20'	125.87'	N24°20'55"W	246.44'
C#68	25.00'	89°59'56"	39.27'	25.00'	N12°54'06"E	35.36'
C#69	925.00'	09°30'33"	153.52'	76.94'	N11°50'42"W	153.34'
C#70	925.00'	07°11'00"	115.97'	58.06'	N03°29'58"W	115.69'

**CENTERLINE CURVE DATA:**

CURVE	RADIUS	DELTA	ARC	TAN	CHORD BRG	CHORD
C-A*	275.00'	116°38'08"	559.81'	445.57'	N31°43'20"E	458.04'
C-B*	525.00'	43°08'18"	470.57'	247.07'	N05°01'36"W	459.53'
C-C*	525.00'	16°23'27"	150.19'	75.61'	N08°20'50"E	149.68'
C-D*	50.00'	90°03'31"	75.59'	50.05'	N45°07'20"E	70.75'
C-E*	250.00'	66°59'02"	292.27'	165.42'	N33°23'57"E	275.91'
C-F*	250.00'	75°15'35"	328.38'	192.73'	N75°28'44"E	305.28'
C-G*	1000.00'	20°03'11"	349.99'	176.81'	N47°52'32"E	348.21'
C-H*	500.00'	35°28'38"	309.60'	159.94'	N75°38'27"E	304.68'
C-I*	150.00'	90°00'00"	235.62'	150.00'	N44°50'54"W	212.13'
C-J*	900.00'	32°11'26"	605.65'	259.69'	N16°00'09"W	499.03'



**r.m. packard**  
surveying & mapping  
1013 Rockledge Drive  
Rockledge, Florida 32955  
Tel.: (321) 632-8335