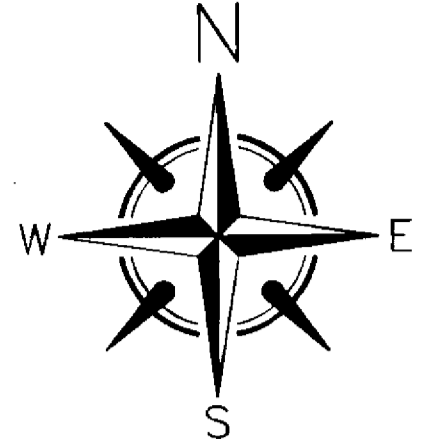
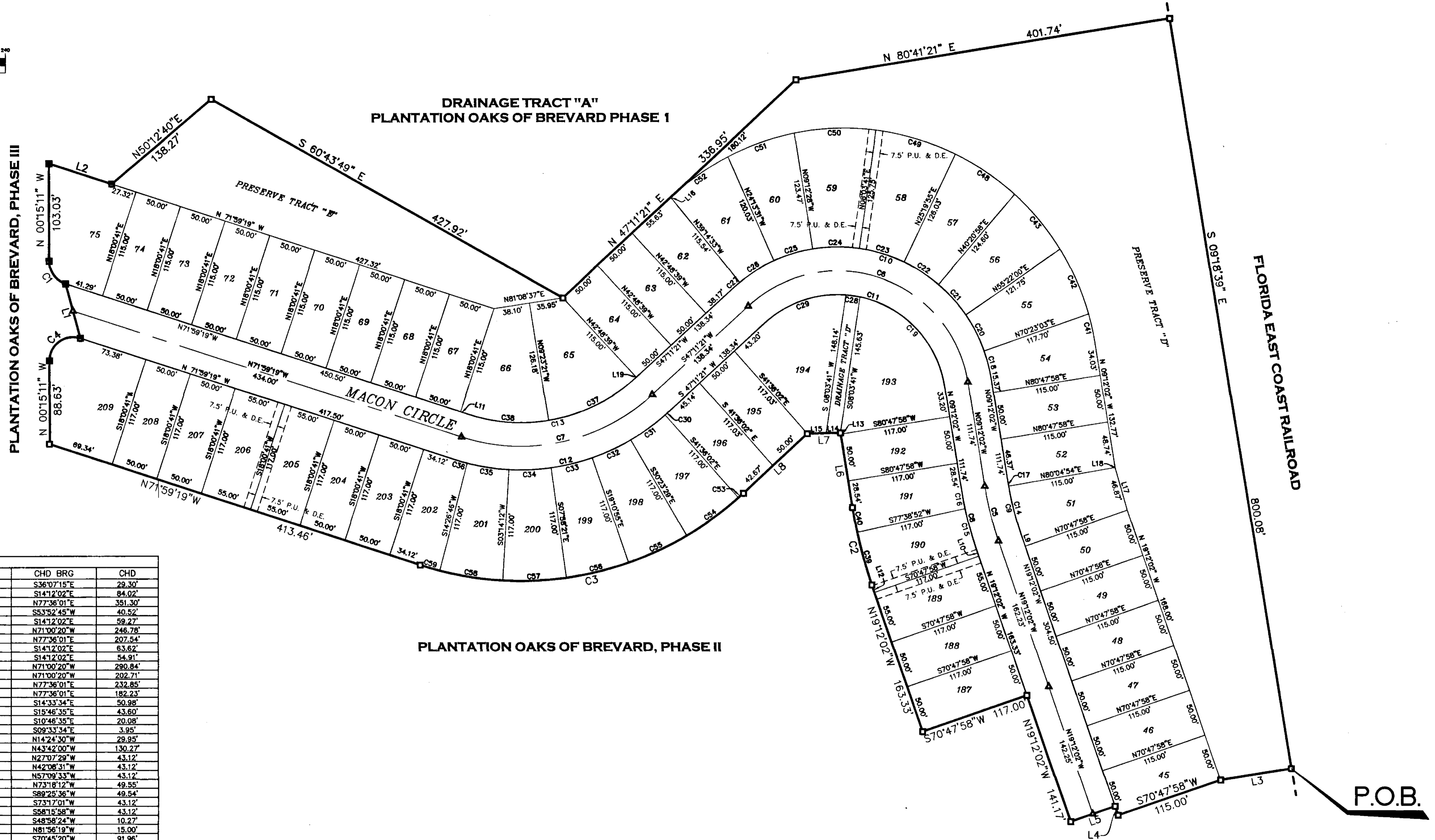


PLANTATION OAKS OF BREVARD, PHASE FOUR

BEING A PORTION OF FUTURE DEVELOPMENT TRACT "C"
 SECTION 10, TOWNSHIP 22 SOUTH, RANGE 35 EAST,
 CITY OF TITUSVILLE,
 BREVARD COUNTY, FLORIDA



GRAPHIC SCALE
 (IN FEET)
 1 inch = 60 ft.



CURVE TABLE						
CURVE	ARC	RADIUS	DELTA	TAN	CHD BRG	CHD
C1	31.30'	25.00'	71°44'08"	18.08'	S36°07'15"E	29.30'
C2	84.12'	482.00'	10°00'00"	42.17'	S14°12'02"E	84.02'
C3	368.36'	347.00'	60°49'20"	203.67'	N77°36'01"E	351.30'
C4	47.24'	25.00'	108°15'52"	34.58'	S53°52'45"W	40.52'
C5	59.34'	340.00'	10°00'00"	29.75'	S14°12'02"E	59.27'
C6	302.04'	140.00'	123°36'37"	261.15'	N71°00'20"W	246.78'
C7	217.62'	205.00'	60°49'20"	120.33'	N77°36'01"E	207.54'
C8	63.70'	365.00'	10°00'00"	31.93'	S14°12'02"E	63.62'
C9	54.98'	315.00'	10°00'00"	27.58'	S14°12'02"E	54.91'
C10	359.97'	165.00'	123°36'37"	307.79'	N71°00'20"W	290.84'
C11	248.10'	115.00'	123°36'37"	214.52'	N71°00'20"W	202.71'
C12	244.16'	230.00'	60°49'20"	135.00'	N77°36'01"E	232.85'
C13	191.08'	180.00'	60°49'20"	105.65'	N77°36'01"E	182.23'
C14	51.03'	315.00'	9°16'56"	25.57'	S14°33'34"E	50.98'
C15	43.63'	365.00'	6°50'54"	21.84'	S15°46'35"E	43.60'
C16	20.08'	365.00'	3°09'06"	10.04'	S10°46'35"E	20.08'
C17	3.95'	315.00'	0°43'04"	1.97'	S09°33'34"E	3.95'
C18	29.99'	165.00'	10°24'55"	15.04'	N14°24'30"W	29.95'
C19	138.49'	115.00'	68°59'55"	79.04'	N43°42'00"W	130.27'
C20	43.25'	165.00'	15°01'02"	21.75'	N27°07'29"W	43.12'
C21	43.25'	165.00'	15°01'02"	21.75'	N42°06'31"W	43.12'
C22	43.25'	165.00'	15°01'02"	21.75'	N57°09'33"W	43.12'
C23	49.74'	165.00'	17°16'14"	25.06'	N73°18'12"W	49.55'
C24	49.73'	165.00'	17°16'09"	25.06'	S89°25'36"W	49.54'
C25	43.25'	165.00'	15°01'02"	21.75'	S73°17'01"W	43.12'
C26	43.25'	165.00'	15°01'02"	21.75'	S58°15'58"W	43.12'
C27	10.28'	165.00'	3°34'06"	5.14'	S48°58'24"W	10.27'
C28	15.01'	115.00'	7°28'43"	7.52'	N81°56'19"W	15.00'
C29	94.60'	115.00'	47°07'58"	50.16'	S70°45'20"W	91.96'
C30	4.86'	230.00'	1°12'36"	2.43'	N47°47'39"E	4.86'
C31	45.00'	230.00'	1°11'23"	22.57'	N54°00'14"E	44.93'
C32	45.00'	230.00'	1°11'23"	22.57'	N65°12'48"E	44.93'
C33	45.00'	230.00'	1°11'23"	22.57'	N76°25'22"E	44.93'
C34	45.00'	230.00'	1°11'23"	22.57'	N87°37'56"E	44.93'
C35	45.00'	230.00'	1°11'23"	22.57'	S81°09'31"E	44.93'
C36	14.31'	230.00'	3°33'56"	7.16'	S73°46'17"E	14.31'
C37	105.00'	180.00'	33°25'18"	54.04'	N63°54'00"E	103.51'
C38	86.08'	180.00'	27°24'02"	43.88'	S85°41'20"E	85.26'
C39	57.61'	482.00'	6°50'54"	28.84'	S15°46'35"E	57.58'
C40	26.51'	482.00'	3°09'06"	13.26'	S10°46'35"E	26.51'
C41	32.53'	270.00'	6°54'13"	16.29'	N12°39'08"W	32.51'
C42	74.76'	270.00'	15°51'53"	37.62'	N24°02'11"W	74.52'
C43	75.62'	270.00'	16°02'46"	38.06'	N39°59'31"W	75.37'
C44	76.14'	270.00'	16°08'26"	38.32'	N56°05'37"W	75.89'
C45	87.74'	270.00'	18°37'06"	44.26'	N73°28'53"W	87.35'
C46	87.37'	270.00'	18°32'26"	44.07'	S87°56'22"W	86.99'
C47	75.26'	270.00'	15°58'17"	37.88'	S70°41'00"W	75.02'
C48	73.08'	270.00'	15°30'30"	36.77'	S54°56'36"W	72.86'
C49	7.33'	347.00'	1°12'36"	3.66'	N47°47'39"E	7.33'
C50	87.89'	347.00'	1°11'23"	34.05'	N54°00'14"E	87.78'
C51	87.89'	347.00'	1°11'23"	34.05'	N65°12'48"E	87.78'
C52	87.89'	347.00'	1°11'23"	34.05'	N76°25'22"E	87.78'
C53	87.89'	347.00'	1°11'23"	34.05'	N87°37'56"E	87.78'
C54	21.59'	347.00'	3°33'56"	10.80'	S73°46'17"E	21.59'

LINE TABLE		
LINE	LENGTH	BEARING
L1	59.91	N15°24'57"W
L2	70.00	S71°59'19"E
L3	76.18	S80°41'21"W
L4	10.04	N19°12'02"W
L5	50.00	S70°47'58"W
L6	80.03	N08°12'02"W
L7	35.25	S88°33'54"W
L8	92.67	S47°11'21"W
L9	14.54	N19°12'02"W
L10	8.33	N19°12'02"W
L11	9.21	N71°59'19"W
L12	8.33	N19°12'02"W
L13	1.49	N08°12'02"W
L14	15.21	S88°33'54"W
L15	20.05	S88°33'54"W
L16	1.19	S47°11'21"W
L17	47.01	N15°58'52"W
L18	0.13	N15°58'52"W
L19	0.17	N47°11'21"E