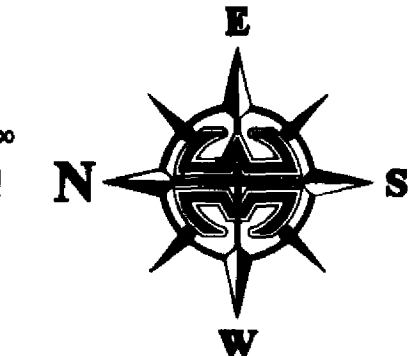
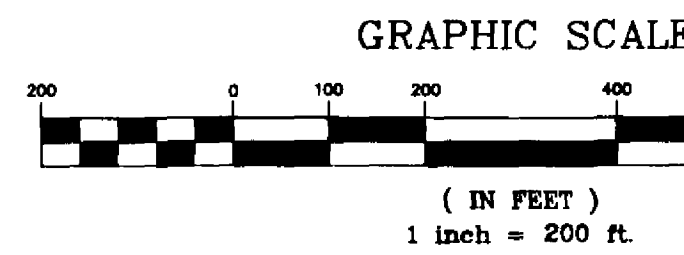


3716 NORTH WICKHAM ROAD, SUITE 3  
 MELBOURNE, FLORIDA 32935-2338  
 PHONE (321) 751-4444 FAX (321) 751-4445  
 PROJECT NUMBER: 203-0518  
 DRAWING NAME: CAPRON RIDGE - PH1.DWG  
 DRAWN BY: EDWARD A. WHITE  
 CHECKED BY: DANIEL D. GARNER P.S.M. 6189

# CAPRON RIDGE PHASE ONE

POD "A" AND A PORTION OF POD "C"  
 OF ST. PATRICK PLANNED UNIT DEVELOPMENT  
 BEING A PORTION OF LANDS LYING IN  
 SECTION 35, TOWNSHIP 25 SOUTH, RANGE 36 EAST,  
 SECTION 2, TOWNSHIP 26 SOUTH, RANGE 36 EAST,  
 BREVARD COUNTY, FLORIDA

NOTE:  
 PRIOR TO THE RELEASE OF THE PERFORMANCE BOND,  
 ALL LOT CORNER MONUMENTATION WILL BE SET AS  
 1/2" IRON RODS WITH CAPS MARKED "LB 3608".



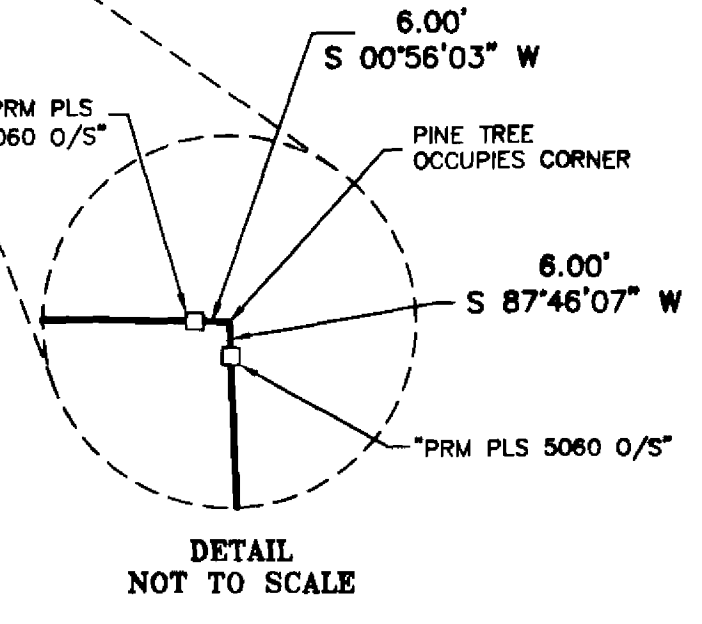
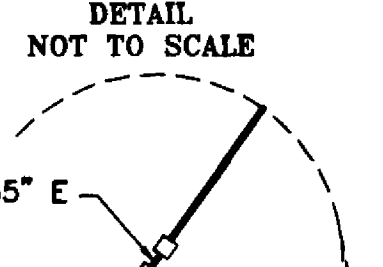
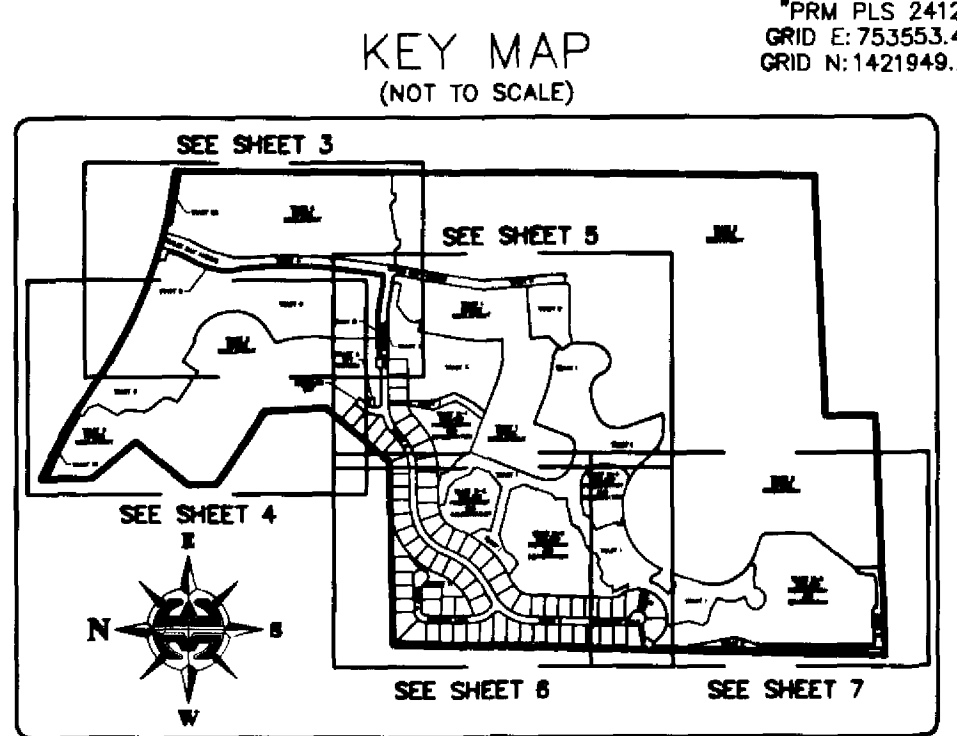
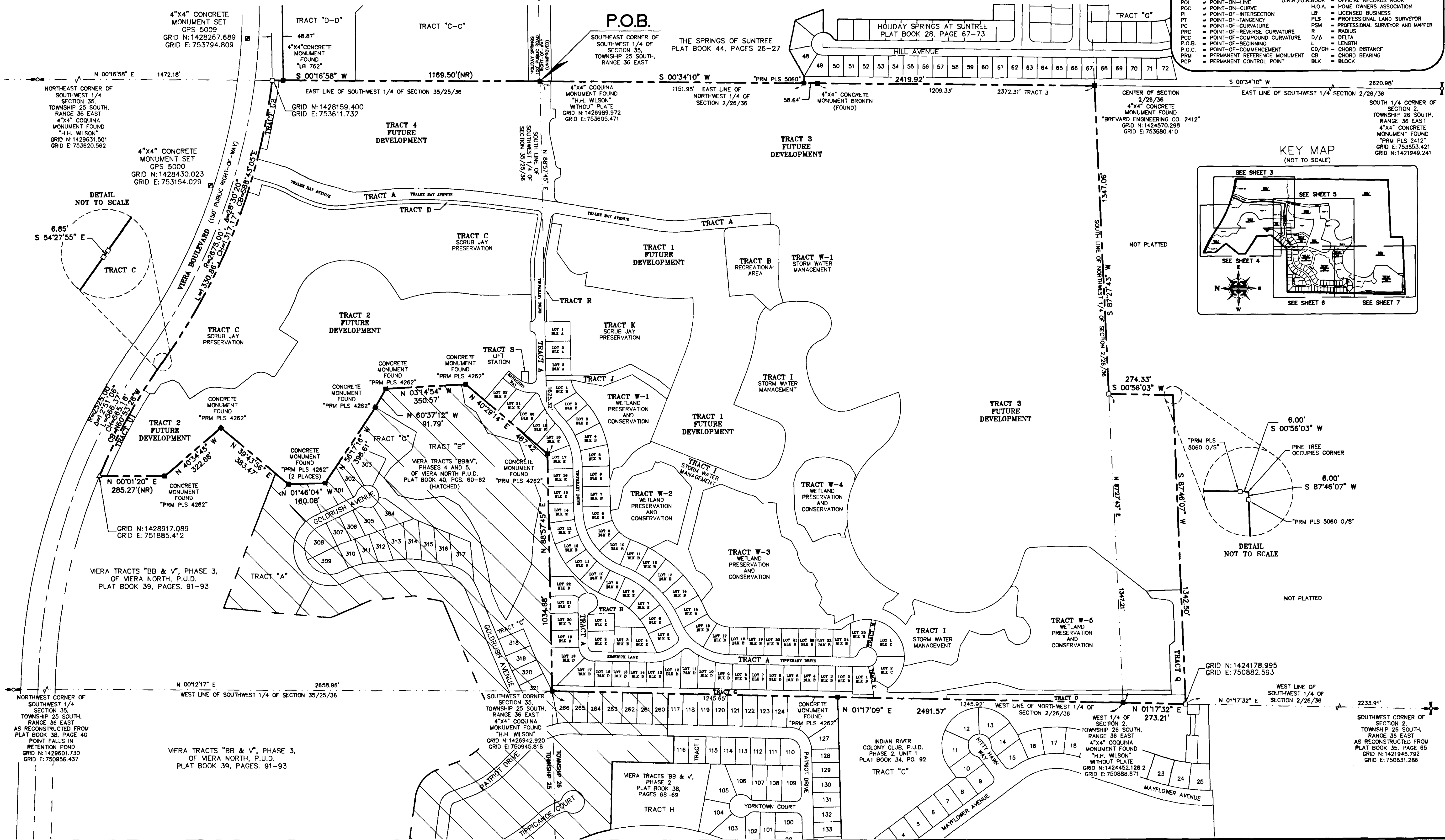
NOTICE: THIS PLAT, AS RECORDED IN ITS GRAPHIC FORM, IS THE OFFICIAL DEPICTION OF THE SUBDIVIDED LANDS DESCRIBED HEREIN AND WILL IN NO CIRCUMSTANCES BE SUPPLANTED IN AUTHORITY BY ANY OTHER GRAPHIC OR DIGITAL FORM OF THE PLAT. THERE MAY BE ADDITIONAL RESTRICTIONS THAT ARE NOT RECORDED ON THIS PLAT THAT MAY BE FOUND IN THE PUBLIC RECORDS OF THIS COUNTY.

NORTHEAST CORNER OF SECTION 2, TOWNSHIP 26 SOUTH, RANGE 36 EAST  
 4"x4" CONCRETE MONUMENT FOUND  
 "PLS 3659"  
 GRID N: 1427026.485  
 GRID E: 756258.985

EAST 1/4 CORNER OF SECTION 2, TOWNSHIP 26 SOUTH, RANGE 36 EAST  
 4"x4" COQUINA MONUMENT FOUND  
 "H.H. WILSON"  
 GRID N: 1424686.425  
 GRID E: 756237.366

**LEGEND:**

- = 4"x4" CONCRETE MONUMENT WITH NAIL AND DISK MARKED "PRM PLS 5060" (SET)
- = 4"x4" CONCRETE MONUMENT WITH NAIL AND DISK MARKED "PRM PLS 5060" (FOUND), (UNLESS OTHERWISE SHOWN)
- = NAIL AND DISK MARKED "POP PLS 5060" (SET)
- = NAIL AND DISK MARKED "POP PLS 5060" (FOUND)
- ▲ = NAIL AND DISK MARKED "PRM PLS 5060" (SET)
- △ = NAIL AND DISK MARKED "PRM PLS 5060" (FOUND)
- PU#DE = PUBLIC UTILITIES AND DRAINAGE EASEMENT
- C## = CURVE NUMBER FOR CURVE TABLE
- L## = LINE NUMBER FOR LINE TABLE
- R/W = RIGHT-OF-WAY
- P.B. = PLAT BOOK
- PG. = PAGE
- RP. = RADIUS POINT
- POL. = POINT-ON-LINE
- POC. = POINT-ON-CURVE
- PI. = POINT-ON-INTERSECTION
- PT. = POINT-OF-TANGENCY
- PC. = POINT-OF-CURVATURE
- PRC. = POINT-OF-REVERSE CURVATURE
- PCC. = POINT-OF-COMPOUND CURVATURE
- P.O.B. = POINT-OF-BEGINNING
- P.O.C. = POINT-OF-COMMENCEMENT
- PRM. = PERMANENT REFERENCE MONUMENT
- POP. = PERMANENT CONTROL POINT
- X = DENOTES LINE BREAK/CHANGE IN DIRECTION
- (R) = RADIAL
- (NR) = NON-RADIAL
- ESMT. = EASEMENT
- O.R.B./O.R. BOOK = OFFICIAL RECORDS BOOK
- H.O.A. = HOME OWNERS ASSOCIATION
- LB = LICENSED BUSINESS
- PLS = PROFESSIONAL LAND SURVEYOR
- PSM = PROFESSIONAL SURVEYOR AND MAPPER
- R = RADIUS
- Δ/D = DELTA
- L = LENGTH
- CD/CH = CHORD DISTANCE
- CB = CHORD BEARING
- BLK = BLOCK



NORTHWEST CORNER OF SECTION 35, TOWNSHIP 25 SOUTH, RANGE 36 EAST AS RECONSTRUCTED FROM PLAT BOOK 38, PAGE 40 POINT FALLS IN RETENTION POND  
 GRID N: 1428601.730  
 GRID E: 750956.437

VIERA TRACTS "BB & V", PHASE 3, OF VIERA NORTH, P.U.D. PLAT BOOK 39, PAGES. 91-93

SOUTHWEST CORNER SECTION 35, TOWNSHIP 25 SOUTH, RANGE 36 EAST  
 4"x4" COQUINA MONUMENT FOUND  
 "H.H. WILSON"  
 GRID N: 1426942.920  
 GRID E: 750945.618

VIERA TRACTS "BB & V", PHASE 3, OF VIERA NORTH, P.U.D. PLAT BOOK 38, PAGES 68-69

INDIAN RIVER COLONY CLUB, P.U.D. PHASE 2, UNIT 1 PLAT BOOK 34, PG. 92

WEST 1/4 OF SECTION 2, TOWNSHIP 26 SOUTH, RANGE 36 EAST  
 4"x4" COQUINA MONUMENT FOUND  
 "H.H. WILSON"  
 WITHOUT PLATE  
 GRID N: 1424452.126 2  
 GRID E: 750888.871

SOUTHWEST CORNER OF SECTION 2, TOWNSHIP 26 SOUTH, RANGE 36 EAST AS RECONSTRUCTED FROM PLAT BOOK 35, PAGE 65  
 GRID N: 1421945.792  
 GRID E: 750831.286