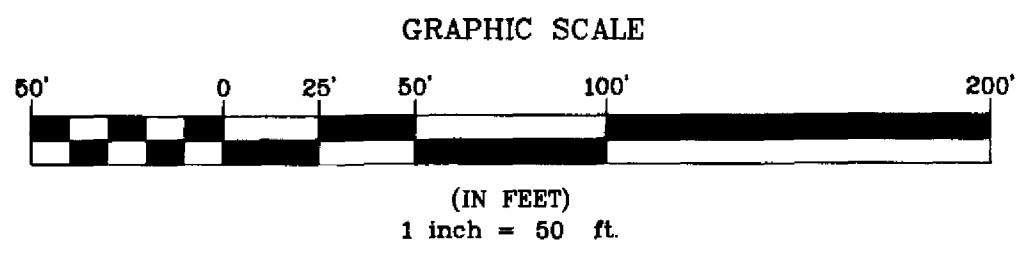
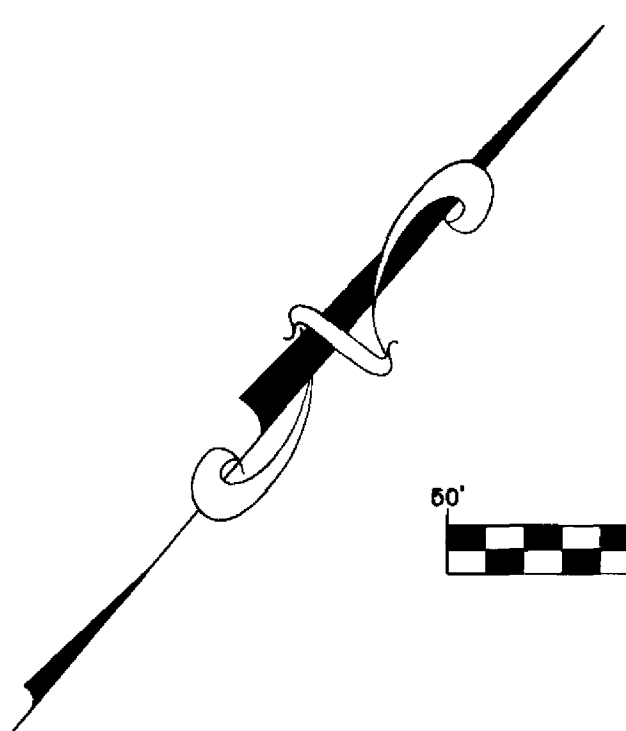


CAPRON TRACE - PHASE 2

VIERA CENTRAL P.U.D. - A PORTION OF PARCEL 4

SECTION 32, TOWNSHIP 25 SOUTH, RANGE 36 EAST

VIERA, BREVARD COUNTY, FLORIDA



CURVE	RADIUS	LENGTH	DELTA	CHORD BEARING	CHORD
C1	350.00'	22.34'	3°39'23"	N46°25'28"E	22.33'
C2	75.00'	110.36'	84°18'21"	S85°57'26"E	100.67'
C3	75.00'	94.14'	71°54'56"	N87°50'51"E	88.08'
C4	75.00'	16.22'	12°23'26"	S49°59'58"E	16.19'
C5	100.00'	25.50'	14°36'36"	N59°11'41"E	25.43'
C6	3346.72'	24.67'	0°25'20"	S52°06'04"W	24.67'
C7	172.00'	23.68'	7°53'16"	N33°02'43"E	23.66'
C8	3224.72'	33.14'	0°35'20"	S47°22'40"W	33.14'
C9	3224.72'	4.18'	0°04'28"	S59°06'04"W	4.18'
C10	3346.72'	4.34'	0°04'28"	S59°06'04"W	4.34'
C11	425.00'	20.37'	2°44'45"	N35°10'42"E	20.37'
C12	425.00'	9.65'	1°18'01"	N43°56'45"E	9.65'

- LEGEND**
- = 1/2" IRON ROD & CAP-SET (STAMPED LANE-LS3913) SET AT ALL LOT AND TRACT CORNERS
 - = PERMANENT CONTROL POINT - SET (METAL MARKER WITH A METAL DISK STAMPED "P.C.-LS3913")
 - = PERMANENT REFERENCE MONUMENT - SET (4"x4" CONCRETE MARKER WITH METAL DISK STAMPED "P.R.M.-L.S. 3913")
 - = PERMANENT REFERENCE MONUMENT - FOUND (4"x4" CONCRETE MARKER MARKED "P.R.M.-LS-3913")
 - AL = ARC LENGTH OF CURVE
 - AC = ACRES
 - R = RADIUS OF CURVE
 - DEL = CENTRAL ANGLE OF CURVE
 - CH = CHORD LENGTH OF CURVE
 - CB = CHORD BEARING OF CURVE
 - RB = RADIAL BEARING
 - (NR) = NON-RADIAL LINE
 - P.O.B. = POINT OF BEGINNING
 - P.O.C. = POINT OF COMMENCEMENT
 - PC = POINT OF CURVATURE
 - CT = CURVE TABLE LABEL
 - LT = LINE TABLE LABEL
 - R/W = RIGHT OF WAY
 - P.U. & D.E. = PUBLIC UTILITY & DRAINAGE EASEMENT
 - P.A.E. = PRIVATE ACCESS EASEMENT
 - O.R.B. = OFFICIAL RECORD BOOK
 - P.D.E. = PRIVATE DRAINAGE EASEMENT
 - P.R.M. = PERMANENT REFERENCE MONUMENT
 - CM = CONCRETE MONUMENT

P.O.B.
NORTHEAST CORNER OF LOT 14, BLOCK A, CAPRON TRACE-PHASE 1 PLAT BOOK 51, PAGES 39-40.

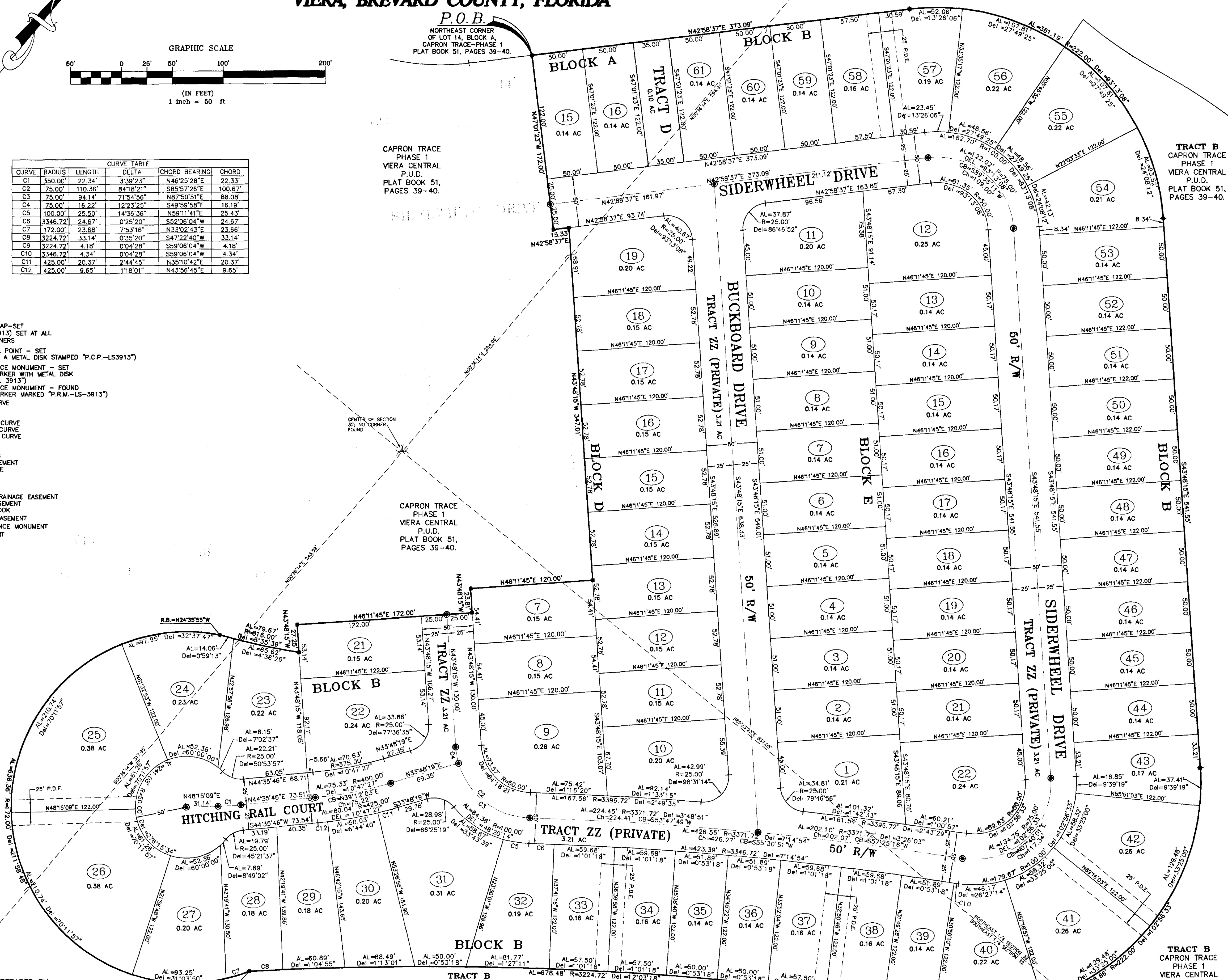
CAPRON TRACE PHASE 1 VIERA CENTRAL P.U.D. PLAT BOOK 51, PAGES 39-40.

CAPRON TRACE PHASE 1 VIERA CENTRAL P.U.D. PLAT BOOK 51, PAGES 39-40.

CAPRON TRACE PHASE 1 VIERA CENTRAL P.U.D. PLAT BOOK 51, PAGES 39-40.

TRACT B CAPRON TRACE PHASE 1 VIERA CENTRAL P.U.D. PLAT BOOK 51, PAGES 39-40.

TRACT B CAPRON TRACE PHASE 1 VIERA CENTRAL P.U.D. PLAT BOOK 51, PAGES 39-40.



THIS PLAT PREPARED BY

B.S.E. CONSULTANTS, INC.
CONSULTING - ENGINEERING - LAND SURVEYING
312 SOUTH HARBOR CITY BOULEVARD, SUITE 4
MELBOURNE, FLORIDA PHONE: (321) 725-3674 FAX: (321) 723-1159
CERTIFICATE OF BUSINESS AUTHORIZATION: 4905
CERTIFICATE OF LAND SURVEYING BUSINESS AUTHORIZATION: 180004905

2003 B.S.E. CONSULTANTS, INC. H:\Projects\Folder_106689\Drawings\106689304.dwg 2/9/2004 11:27:03 AM EST