

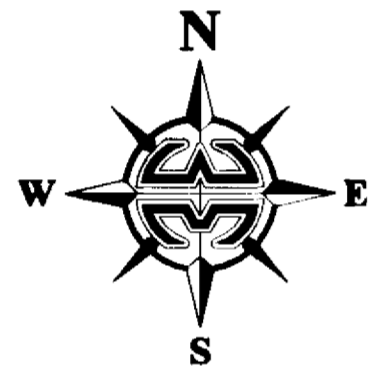
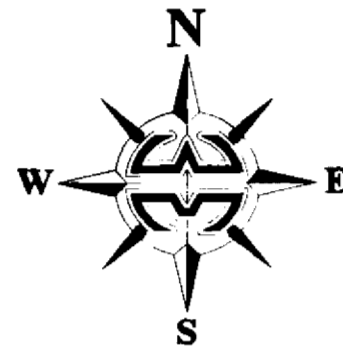
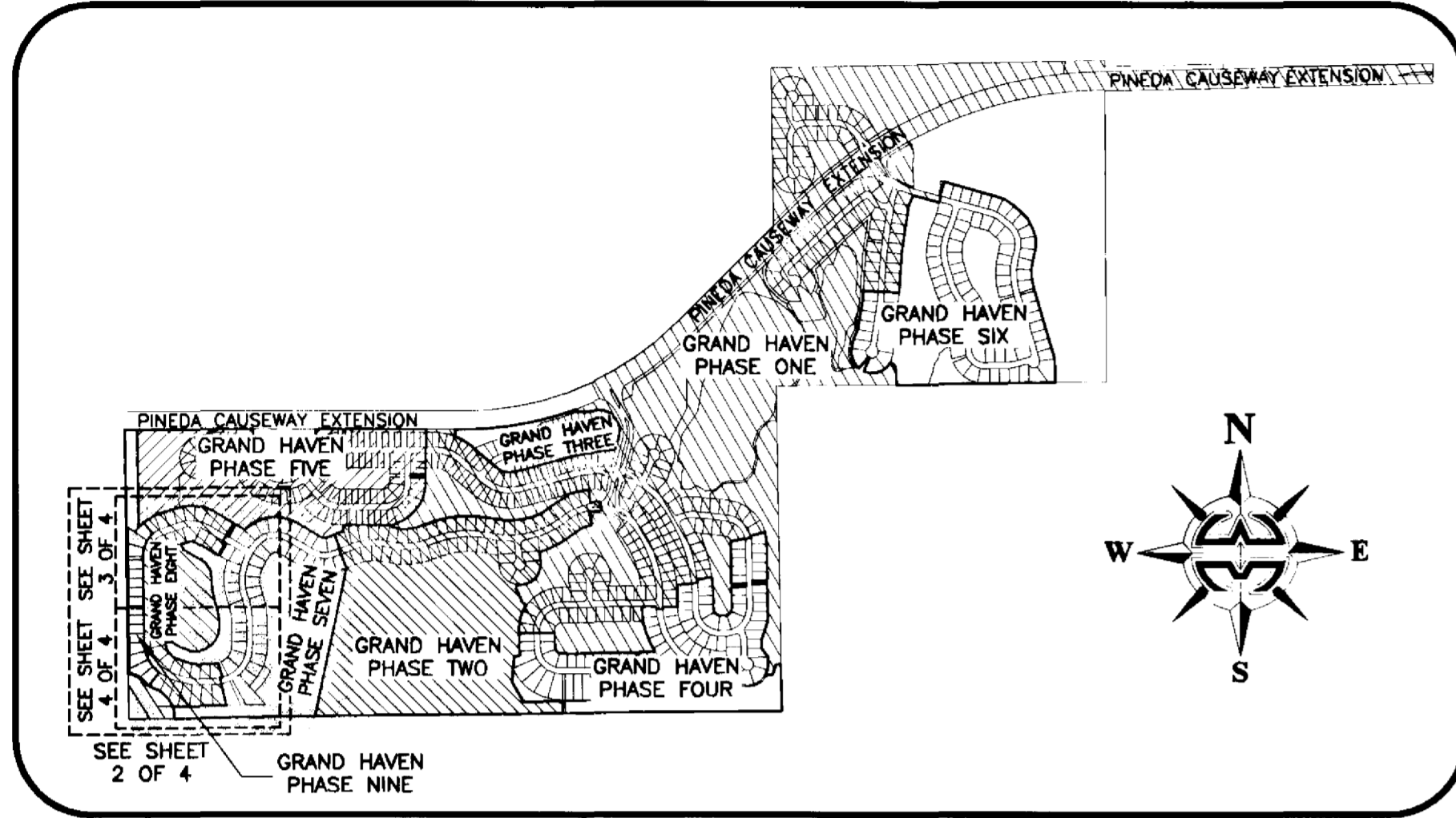
# GRAND HAVEN PHASE NINE

A REPLAT OF TRACT BBB GRAND HAVEN PHASE EIGHT, PLAT BOOK 0051, PAGES 0033-0036,  
 AND A PORTION OF O.R. BOOK 2384, PAGE 1351,  
 OF THE PUBLIC RECORDS OF BREVARD COUNTY, FLORIDA, LYING IN  
 SECTION 26, TOWNSHIP 26 SOUTH, RANGE 36 EAST, BREVARD COUNTY, FLORIDA

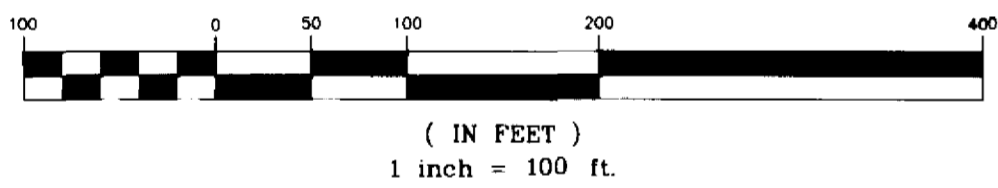
NOTE:  
 PRIOR TO THE RELEASE OF THE PERFORMANCE BOND,  
 ALL LOT CORNER MONUMENTATION WILL BE SET AS  
 1/2" IRON RODS WITH CAPS MARKED "LB 3608".

NOTICE: THIS PLAT, AS RECORDED IN ITS GRAPHIC FORM, IS THE OFFICIAL  
 DEPICTION OF THE SUBDIVIDED LANDS DESCRIBED HEREIN AND WILL IN NO  
 CIRCUMSTANCES BE SUPPLANTED IN AUTHORITY BY ANY OTHER GRAPHIC OR  
 DIGITAL FORM OF THE PLAT. THERE MAY BE ADDITIONAL RESTRICTIONS THAT  
 ARE NOT RECORDED ON THIS PLAT THAT MAY BE FOUND IN THE PUBLIC  
 RECORDS OF THIS COUNTY.

KEY MAP  
 (NOT TO SCALE)



GRAPHIC SCALE



LINE	LENGTH	BEARING
L1	100.01'	S 89°58'40" W
L2	10.00'	S 89°16'35" W

CURVE	RADIUS	DELTA	LENGTH	CHORD	CHORD BEARING
C1	345.00'	8°49'43"	53.16'	53.11'	N 46°02'00" E
C2	225.00'	51°10'16"	200.95'	194.34'	S 24°51'43" E
C3	325.00'	50°53'38"	288.69'	279.29'	S 26°10'14" E
C4	150.00'	21°45'51"	56.98'	56.64'	N 48°23'27" W
C5	150.00'	21°32'07"	56.38'	56.05'	N 48°16'35" W
C6	150.00'	11°23'09"	29.81'	29.76'	N 43°12'06" W
C7	150.00'	10°08'57"	26.57'	26.54'	N 53°58'10" W

- LEGEND:**
- = 4"x4" CONCRETE MONUMENT WITH NAIL AND DISK MARKED "PRM PLS 5060" (SET)
  - = 4"x4" CONCRETE MONUMENT WITH NAIL AND DISK MARKED "PRM PLS 5060" (FOUND)
  - = NAIL AND DISK MARKED "PCP PLS 5060" (SET)
  - ◊ = NAIL AND DISK MARKED "PCP PLS 5060" (FOUND)
  - △ = NAIL AND DISK MARKED "PRM PLS 5060" (SET)
  - ▲ = NAIL AND DISK MARKED "PRM PLS 5060" (FOUND)
  - P&UDE— = PUBLIC UTILITIES AND DRAINAGE EASEMENT
  - C## = CURVE NUMBER FOR CURVE TABLE
  - L## = LINE NUMBER FOR LINE TABLE
  - R/W = RIGHT-OF-WAY
  - P.B. = PLAT BOOK
  - P.C. = PAGE
  - RP = RADIUS POINT
  - POL = POINT-ON-LINE
  - POC = POINT-ON-CURVE
  - PI = POINT-OF-INTERSECTION
  - PT = POINT-OF-TANGENCY
  - PC = POINT-OF-CURVATURE
  - PRC = POINT-OF-REVERSE CURVATURE
  - PCC = POINT-OF-COMPOUND CURVATURE
  - P.O.B. = POINT-OF-BEGINNING
  - P.O.C. = POINT-OF-COMMENCEMENT
  - PRM = PERMANENT REFERENCE MONUMENT
  - PCP = PERMANENT CONTROL POINT
  - x = DENOTES LINE BREAK
  - (R) = RADIAL
  - (NR) = NON-RADIAL
  - ESMT = EASEMENT
  - O.R.B./O.R. Book = OFFICIAL RECORDS BOOK
  - H.O.A. = HOME OWNERS ASSOCIATION
  - LB = LICENSED BUSINESS
  - PLS = PROFESSIONAL LAND SURVEYOR
  - PSM = PROFESSIONAL SURVEYOR AND MAPPER
  - R = RADIUS
  - D = DELTA
  - L = LENGTH
  - CD = CHORD DISTANCE
  - CB = CHORD BEARING

