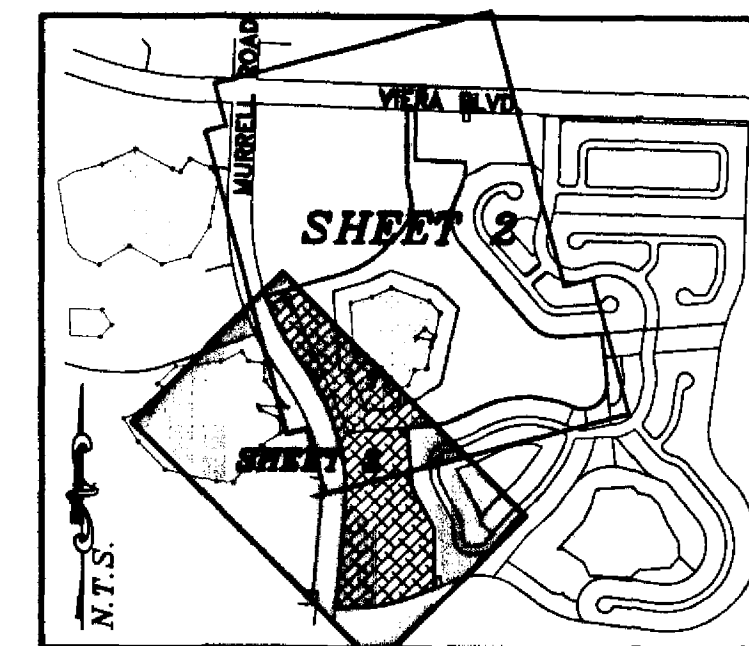


SUSEDA PARK

VIERA NORTH PUD - TRACTS Y1, OS-A11, OS0-A12, OS-A13, & OS-P18
SECTION 34, TOWNSHIP 25 SOUTH, RANGE 36 EAST & SECTION 3, TOWNSHIP 26 SOUTH, RANGE 36 EAST
VIERA, BREVARD COUNTY, FLORIDA

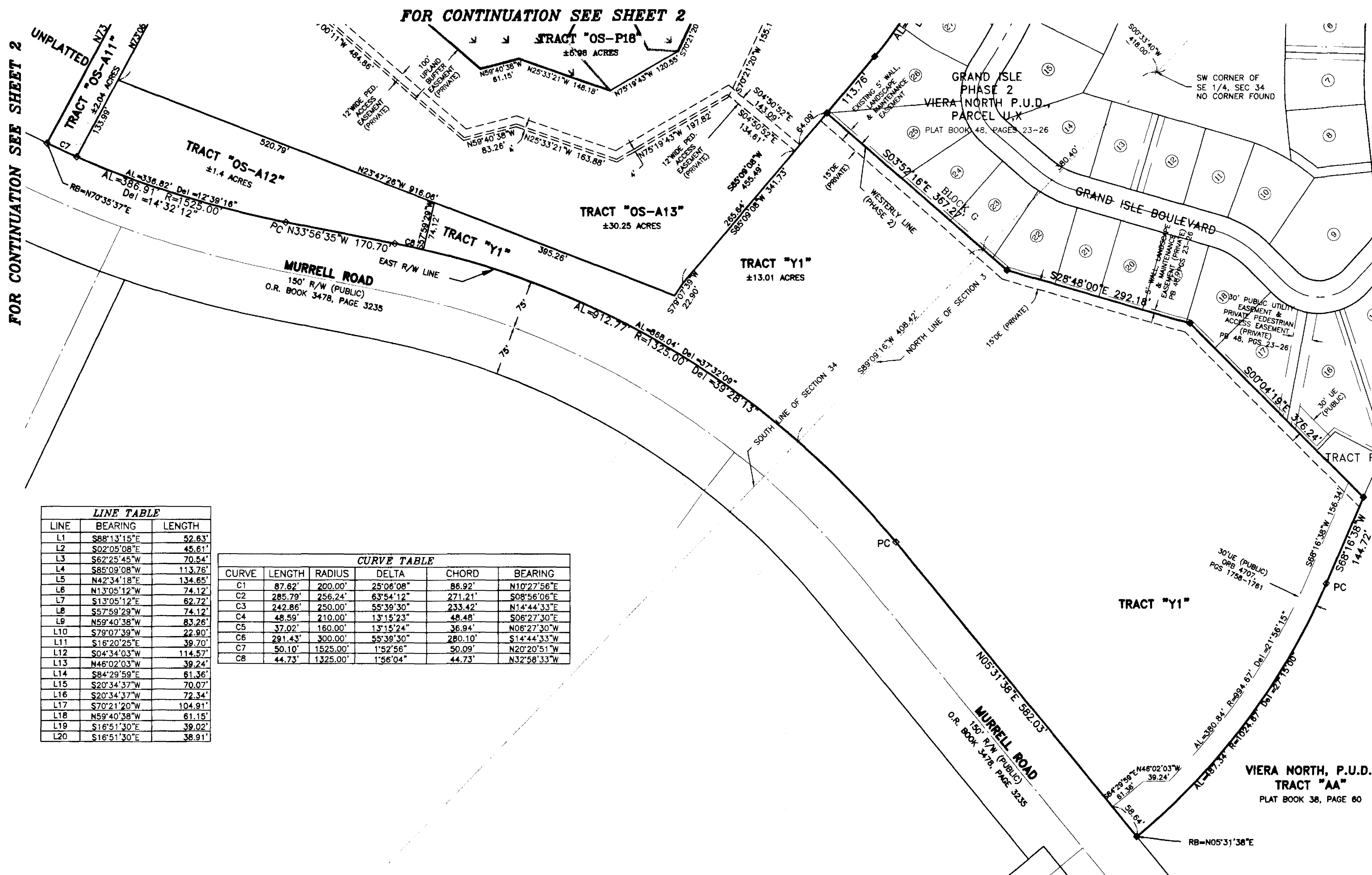
PLAT BOOK 52, PAGE 11

SHEET 3 OF 3
SECTION 34, TWP. 25 S., RANGE 36 E.
SECTION 3, TWP. 26 S., RANGE 36 E.



LOCATION MAP

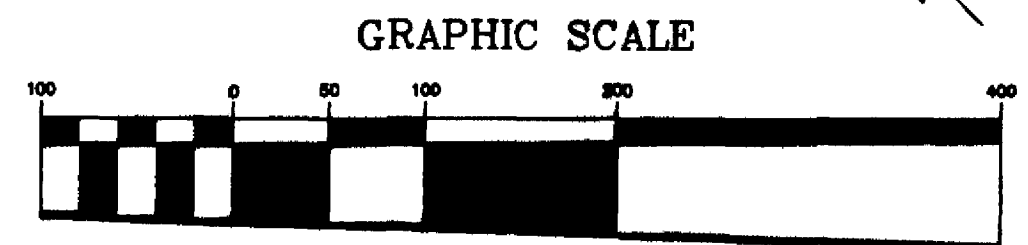
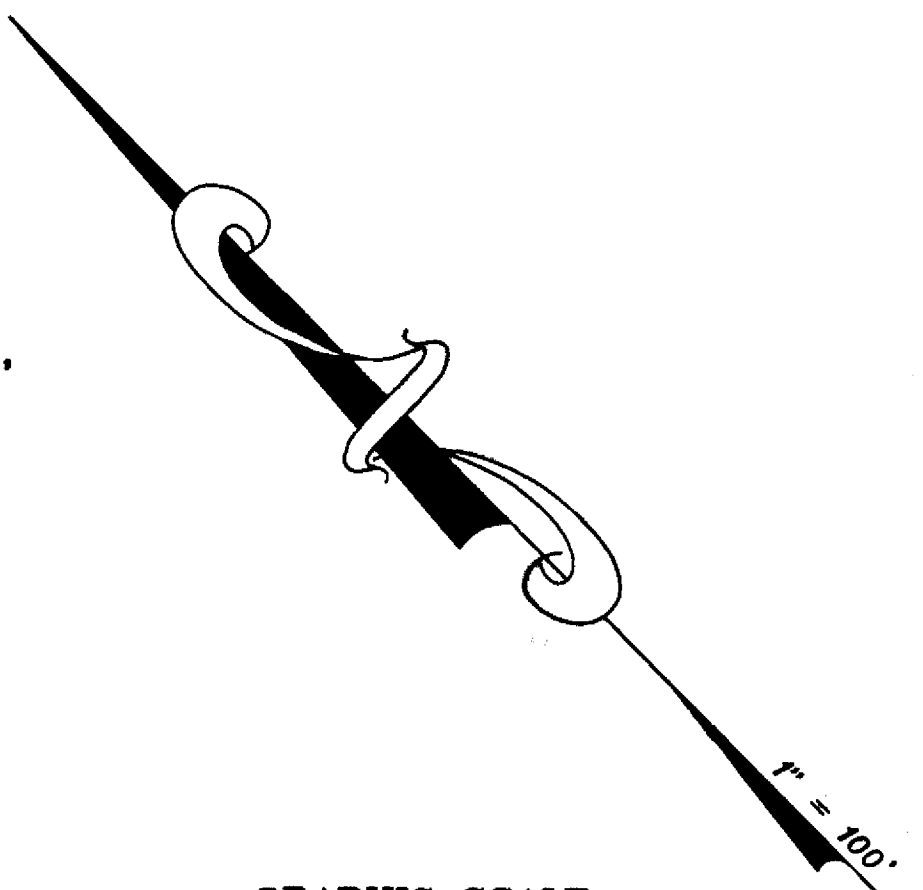
N.T.S.



LINE	BEARING	LENGTH
L1	S88°13'15"E	52.63'
L2	S02°05'08"E	45.61'
L3	S62°25'45"W	70.54'
L4	S85°09'08"W	113.78'
L5	N42°34'18"E	134.65'
L6	N13°05'12"W	74.12'
L7	S13°05'12"E	82.72'
L8	S57°59'29"W	74.12'
L9	N59°40'38"W	83.26'
L10	S79°07'39"W	22.90'
L11	S16°20'25"E	39.70'
L12	S04°34'03"W	114.57'
L13	N46°02'03"W	39.24'
L14	S84°29'59"E	61.36'
L15	S20°34'37"W	70.07'
L16	S20°34'37"W	72.34'
L17	S70°21'20"W	104.91'
L18	N59°40'38"W	61.15'
L19	S16°51'30"E	39.02'
L20	S16°51'30"E	38.91'

CURVE	LENGTH	RADIUS	DELTA	CHORD	BEARING
C1	87.62'	200.00'	25°06'08"	86.92'	N10°27'56"E
C2	285.79'	256.24'	63°54'12"	271.21'	S08°56'06"E
C3	242.86'	250.00'	55°39'30"	233.42'	N14°44'33"E
C4	48.59'	210.00'	13°15'23"	48.48'	S06°27'30"E
C5	37.02'	160.00'	13°15'24"	36.94'	N08°27'30"W
C6	291.43'	300.00'	55°39'30"	280.10'	S14°44'33"W
C7	50.10'	1525.00'	1°52'56"	50.09'	N20°20'51"W
C8	44.73'	1325.00'	1°56'04"	44.73'	N32°58'33"W

VIERA NORTH, P.U.D.,
TRACT "AA"
PLAT BOOK 38, PAGE 80



(IN FEET)
1 inch = 100 ft.

H:\Projects\Folder\10574\Drawings\300\Plats\10574300.dwg 7/9/2004 7:37:57 AM EDT
 © 2004 B.S.E. CONSULTANTS, INC.

THIS PLAT PREPARED BY -
B.S.E. CONSULTANTS, INC.
 CONSULTING - ENGINEERING - LAND SURVEYING
 312 SOUTH HARBOR CITY BOULEVARD, SUITE 4
 MELBOURNE, FLORIDA 32901 PHONE: (321) 725-3674 FAX: (321) 723-1159
 CERTIFICATE OF BUSINESS AUTHORIZATION: 4905
 CERTIFICATE OF LAND SURVEYING BUSINESS AUTHORIZATION: LB0004905

DATE: 3/12/04