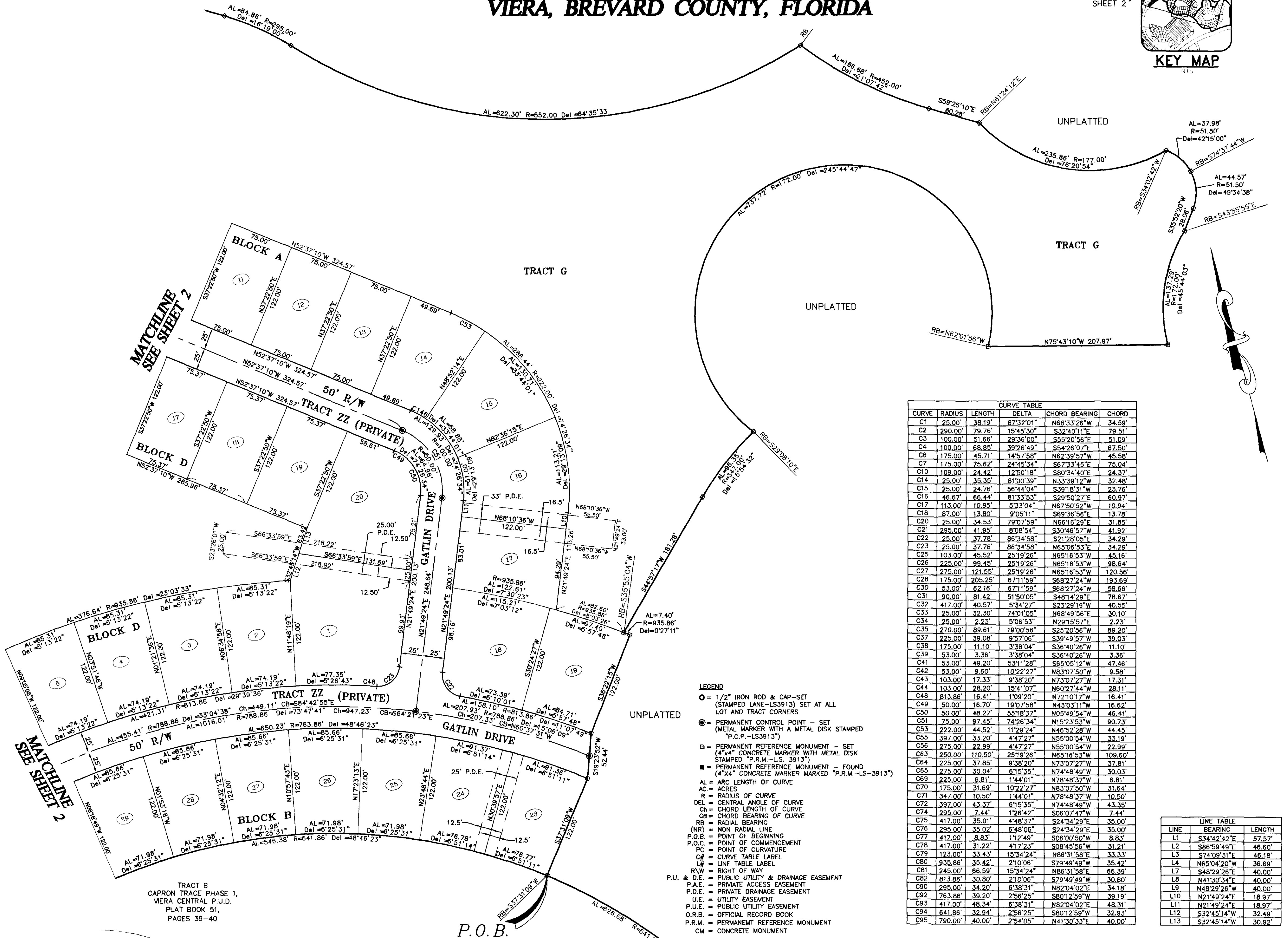
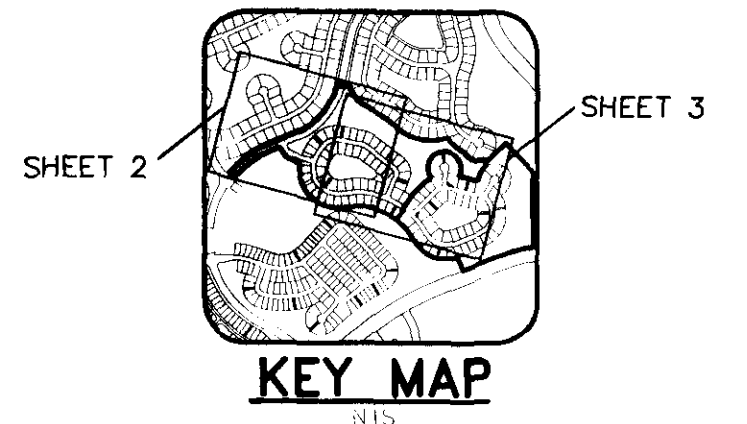


# RAVENCLIFFE - PHASE 1

## VIERA CENTRAL P.U.D. - A PORTION OF PARCEL 4

### SECTION 32, TOWNSHIP 25 SOUTH, RANGE 36 EAST

### VIERA, BREVARD COUNTY, FLORIDA



CURVE	RADIUS	LENGTH	DELTA	CHORD BEARING	CHORD
C1	25.00'	38.19'	87°32'01"	N68°33'26"W	34.59'
C2	290.00'	79.76'	15°45'30"	S32°40'11"E	79.51'
C3	100.00'	51.66'	29°36'00"	S55°20'56"E	51.09'
C4	100.00'	68.85'	39°26'49"	S54°26'07"E	67.50'
C6	175.00'	45.71'	14°57'58"	N62°39'57"W	45.58'
C7	175.00'	75.62'	24°45'34"	S67°33'45"E	75.04'
C10	109.00'	24.42'	12°50'18"	S80°34'40"E	24.37'
C14	25.00'	35.35'	81°00'39"	N33°39'12"W	32.48'
C15	25.00'	24.76'	56°44'04"	S39°18'31"W	23.76'
C16	46.67'	66.44'	81°33'53"	S29°50'27"E	60.97'
C17	113.00'	10.95'	5°33'04"	N67°50'52"W	10.94'
C18	87.00'	13.80'	9°05'11"	S69°36'56"E	13.78'
C20	25.00'	34.53'	79°07'59"	N66°16'29"E	31.85'
C21	295.00'	41.95'	8°08'54"	S30°46'57"W	41.92'
C22	25.00'	37.78'	86°34'58"	S21°28'05"E	34.29'
C23	25.00'	37.78'	86°34'58"	N65°06'53"E	34.29'
C25	103.00'	45.52'	25°19'26"	N65°16'53"W	45.16'
C26	225.00'	99.45'	25°19'26"	N65°16'53"W	98.64'
C27	275.00'	121.55'	25°19'26"	N65°16'53"W	120.56'
C28	175.00'	205.25'	67°11'59"	S68°27'24"W	193.69'
C30	53.00'	62.16'	67°11'59"	S68°27'24"W	58.66'
C31	90.00'	81.42'	51°50'05"	S48°14'29"E	78.67'
C32	417.00'	40.57'	5°34'27"	S23°29'19"W	40.55'
C33	25.00'	32.30'	74°01'05"	N68°49'56"E	30.10'
C34	25.00'	2.23'	5°06'53"	N29°15'57"E	2.23'
C35	270.00'	89.61'	19°00'56"	S25°20'56"W	89.20'
C37	225.00'	39.08'	9°57'06"	S39°49'57"W	39.03'
C38	175.00'	11.10'	3°38'04"	S36°40'26"W	11.10'
C39	53.00'	3.36'	3°38'04"	S36°40'26"W	3.36'
C41	53.00'	49.20'	53°11'28"	S65°05'12"W	47.46'
C42	53.00'	9.60'	10°22'27"	N83°07'50"W	9.58'
C43	103.00'	17.33'	9°38'20"	N73°07'27"W	17.31'
C44	103.00'	28.20'	15°41'07"	N60°27'44"W	28.11'
C48	813.86'	16.41'	1°09'20"	N72°10'17"W	16.41'
C49	50.00'	16.70'	19°07'58"	N43°03'11"W	16.62'
C50	50.00'	48.27'	55°18'37"	N05°49'54"W	46.41'
C51	75.00'	97.45'	74°26'34"	N15°23'53"W	90.73'
C53	222.00'	44.52'	11°29'24"	N46°52'28"W	44.45'
C55	397.00'	33.20'	4°47'27"	N55°00'54"W	33.19'
C56	275.00'	22.99'	4°47'27"	N55°00'54"W	22.99'
C63	250.00'	110.50'	25°19'26"	N65°16'53"W	109.60'
C64	225.00'	37.85'	9°38'20"	N73°07'27"W	37.81'
C65	275.00'	30.04'	6°15'35"	N74°48'49"W	30.03'
C69	225.00'	6.81'	1°44'01"	N78°48'37"W	6.81'
C70	175.00'	31.69'	10°22'27"	N83°07'50"W	31.64'
C71	347.00'	10.50'	1°44'01"	N78°48'37"W	10.50'
C72	397.00'	43.37'	6°15'35"	N74°48'49"W	43.35'
C74	295.00'	7.44'	1°26'42"	S06°07'47"W	7.44'
C75	417.00'	35.01'	4°48'37"	S24°34'29"E	35.00'
C76	295.00'	35.02'	6°48'06"	S24°34'29"E	35.00'
C77	417.00'	8.83'	1°12'49"	S06°00'50"W	8.83'
C78	417.00'	31.22'	4°17'23"	S08°45'56"W	31.21'
C79	123.00'	33.43'	15°34'24"	N86°31'58"E	33.33'
C80	935.86'	35.42'	2°10'06"	S79°49'49"W	35.42'
C81	245.00'	66.59'	15°34'24"	N86°31'58"E	66.39'
C82	813.86'	30.80'	2°10'06"	S79°49'49"W	30.80'
C90	295.00'	34.20'	6°38'31"	N82°04'02"E	34.18'
C92	763.86'	39.20'	2°56'25"	S80°12'59"W	39.19'
C93	417.00'	48.34'	6°38'31"	N82°04'02"E	48.31'
C94	641.86'	32.94'	2°56'25"	S80°12'59"W	32.93'
C95	790.00'	40.00'	2°54'05"	N41°30'33"E	40.00'

- LEGEND**
- = 1/2" IRON ROD & CAP-SET (STAMPED LANE-LS3913) SET AT ALL LOT AND TRACT CORNERS
  - = PERMANENT CONTROL POINT - SET (METAL MARKER WITH A METAL DISK STAMPED "P.C.P.-LS3913")
  - = PERMANENT REFERENCE MONUMENT - SET (4"x4" CONCRETE MARKER WITH METAL DISK STAMPED "P.R.M.-LS-3913")
  - = PERMANENT REFERENCE MONUMENT - FOUND (4"x4" CONCRETE MARKER MARKED "P.R.M.-LS-3913")
  - AL = ARC LENGTH OF CURVE
  - AC = ACRES
  - R = RADIUS OF CURVE
  - DEL = CENTRAL ANGLE OF CURVE
  - CH = CHORD LENGTH OF CURVE
  - CB = CHORD BEARING OF CURVE
  - RB = RADIAL BEARING
  - (NR) = NON RADIAL LINE
  - P.O.B. = POINT OF BEGINNING
  - P.O.C. = POINT OF COMMENCEMENT
  - P.C. = POINT OF CURVATURE
  - CT = CURVE TABLE LABEL
  - L = LINE TABLE LABEL
  - R/W = RIGHT OF WAY
  - P.U. & D.E. = PUBLIC UTILITY & DRAINAGE EASEMENT
  - P.A.E. = PRIVATE ACCESS EASEMENT
  - P.D.E. = PRIVATE DRAINAGE EASEMENT
  - U.E. = UTILITY EASEMENT
  - P.U.E. = PUBLIC UTILITY EASEMENT
  - O.R.B. = OFFICIAL RECORD BOOK
  - P.R.M. = PERMANENT REFERENCE MONUMENT
  - CM = CONCRETE MONUMENT

LINE	BEARING	LENGTH
L1	S34°42'42"E	57.57'
L2	S86°59'49"E	46.60'
L3	S74°09'31"E	46.18'
L4	N65°04'20"W	36.69'
L7	S48°29'26"E	40.00'
L8	N41°30'34"E	40.00'
L9	N48°29'26"W	40.00'
L10	N21°49'24"E	18.97'
L11	N21°49'24"E	18.97'
L12	S32°45'14"W	32.49'
L13	S32°45'14"W	30.92'

THIS PLAT PREPARED BY -

**B.S.E. CONSULTANTS, INC.**  
 CONSULTING - ENGINEERING - LAND SURVEYING  
 312 SOUTH HARBOR CITY BOULEVARD, SUITE 4  
 MELBOURNE, FLORIDA PHONE: (321) 725-3674 FAX: (321) 723-1159  
 CERTIFICATE OF BUSINESS AUTHORIZATION: 4902  
 CERTIFICATE OF LAND SURVEYING BUSINESS AUTHORIZATION: LB0004905

